

epic
The
official
Magazine
of the
Artworkz
Photo
Group
ARTWORKZ

Winter



- EPIC PHOTOGRAPHERS -



Winter

- Season -

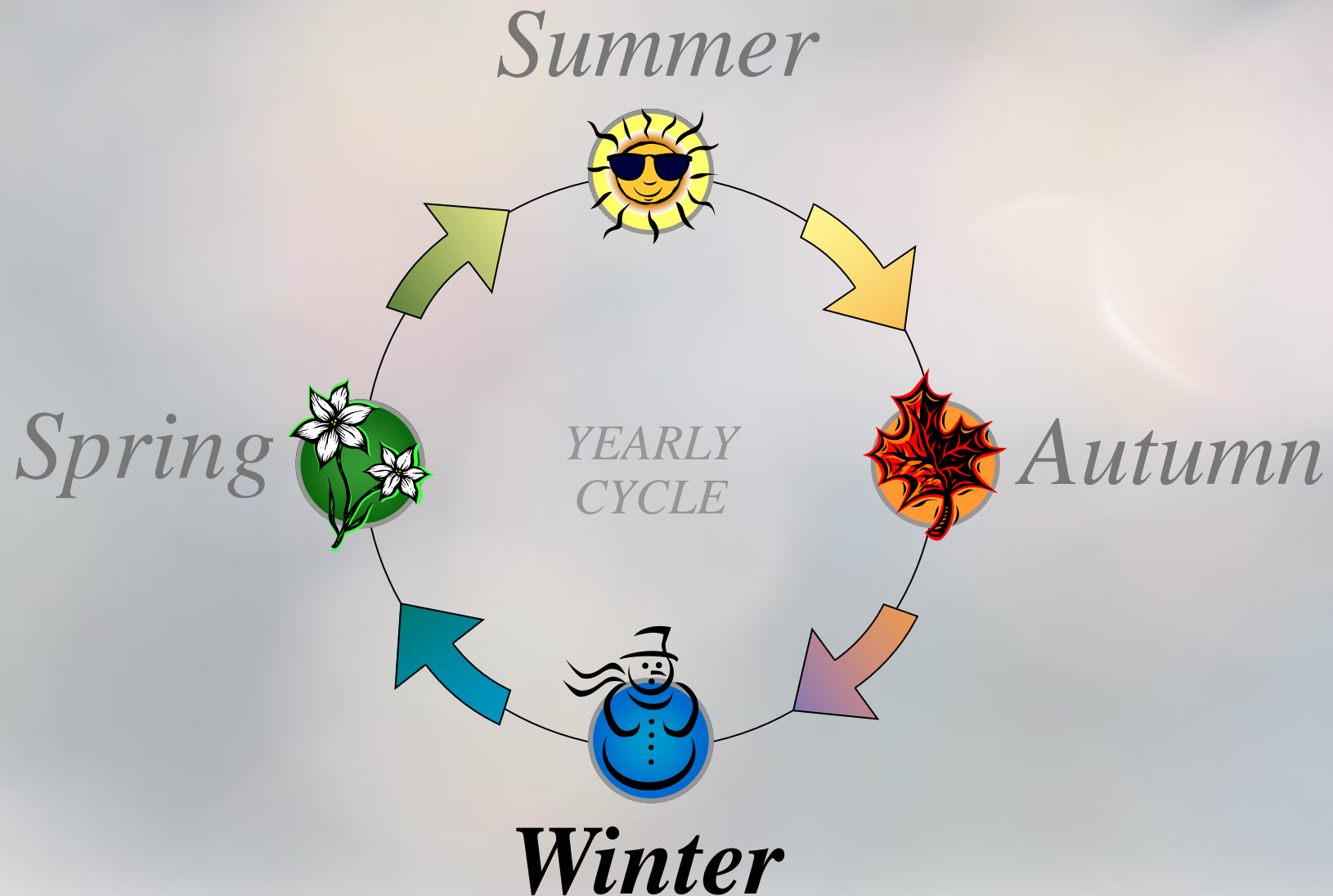
Our year is divided into four seasons, each made up of three months.

Each season is known for its weather, temperature, daylight and colour.

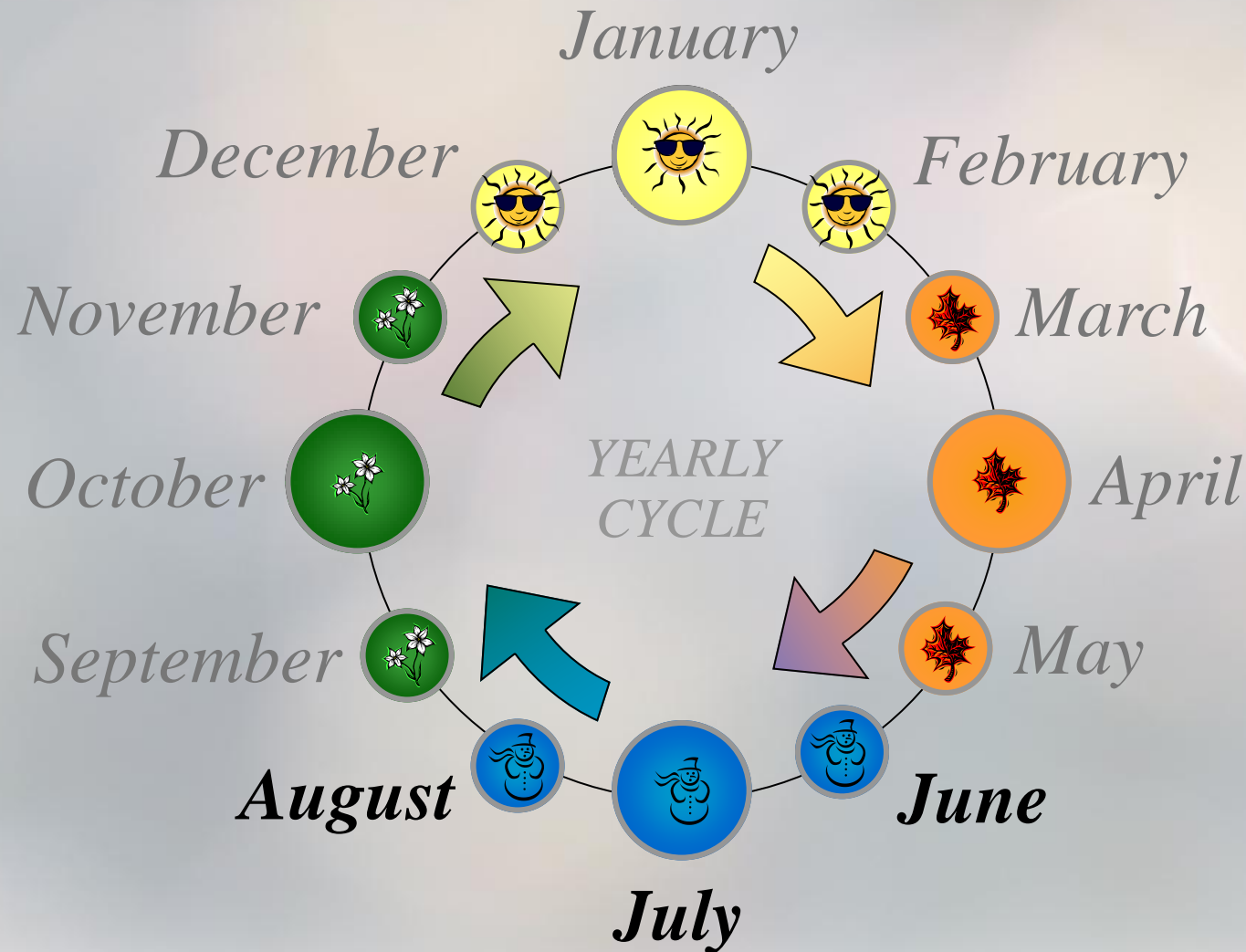
They are also known by how nature responds to them.

Every season is different due to the Earth's changing position in relation to the Sun.

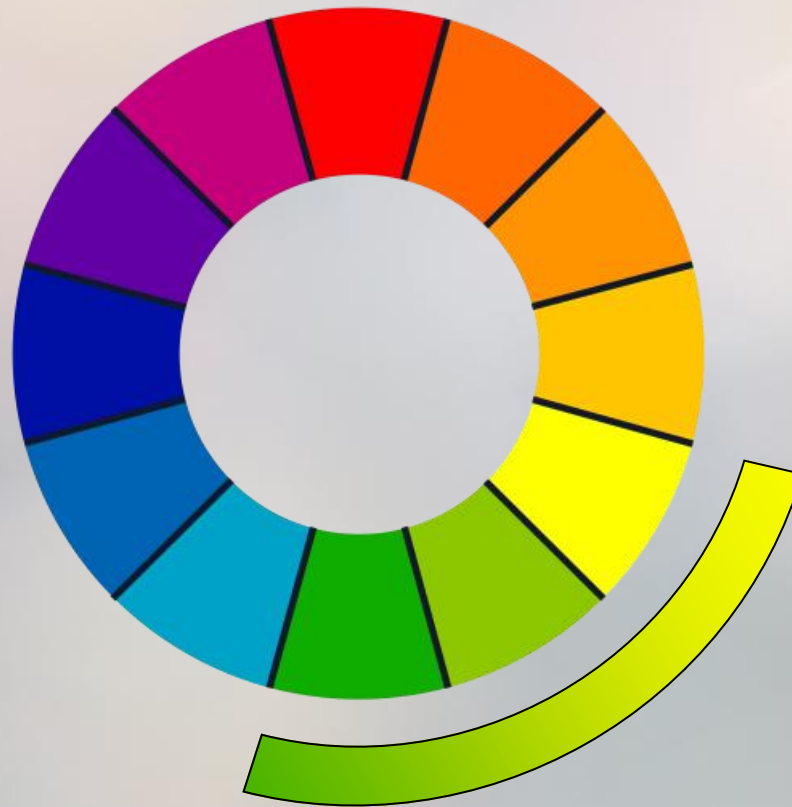
THE FOUR SEASONS



MONTHS OF WINTER IN THE SOUTHERN HEMISPHERE



COLOURS OF FLORA IN WINTER



Winter has the narrowest range of colours of all the seasons

MONTHS OF WINTER IN THE SOUTHERN HEMISPHERE

The following pictures
highlight the season
of winter

WINTER SUNRISE





MORNING LIGHT



MORNING LIGHT



MORNING LIGHT



MORNING LIGHT



MORNING MIST



MORNING MIST



MORNING MIST





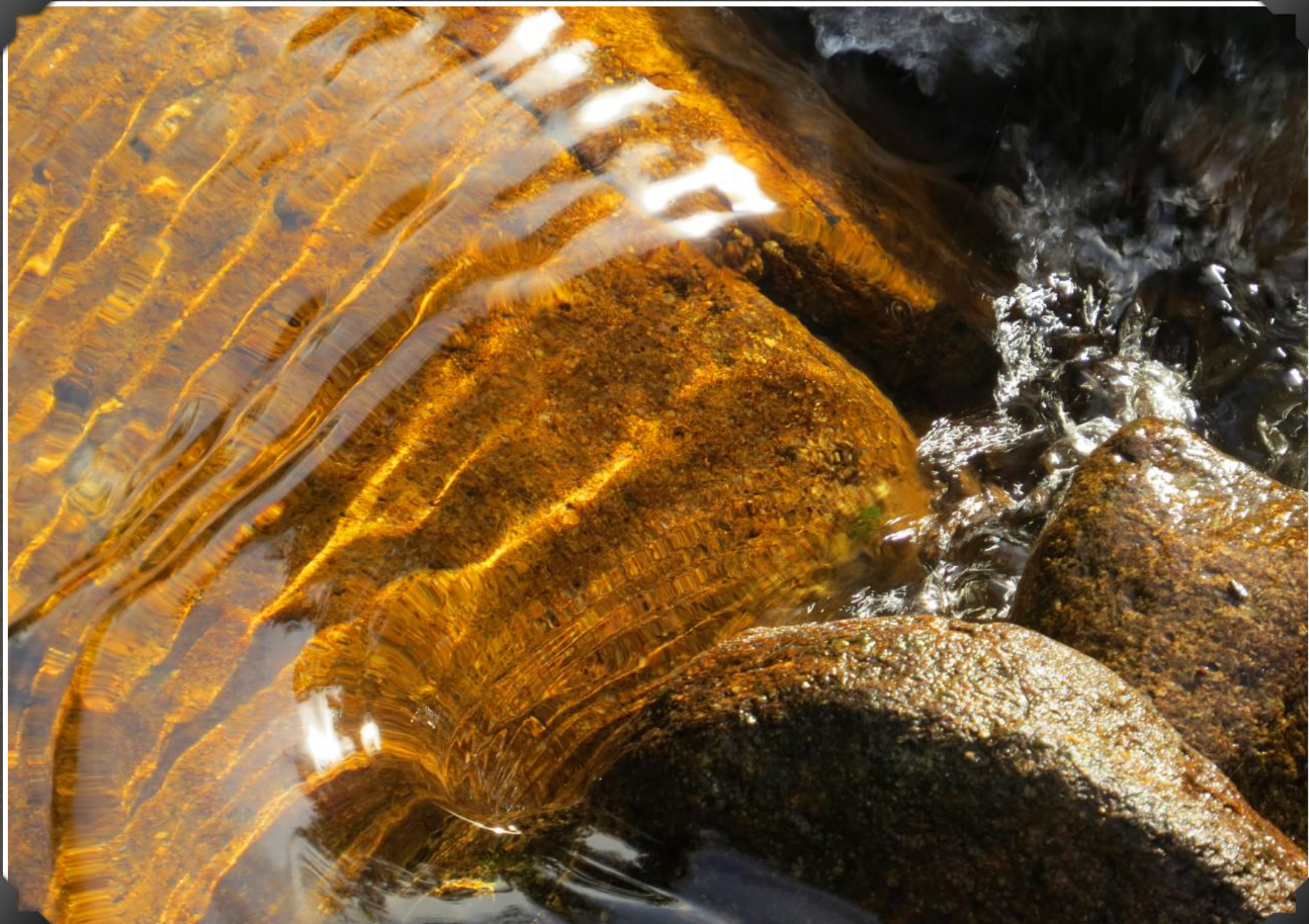
EVENING MIST RISING FROM THE GROUND



EVENING MIST RISING FROM THE GROUND



CLEAR COLD MOUNTAIN STREAM



GREEN HILLS



NATIVE ANIMALS FEED DURING A FOG





LEACH



Using salt to remove a leech in winter

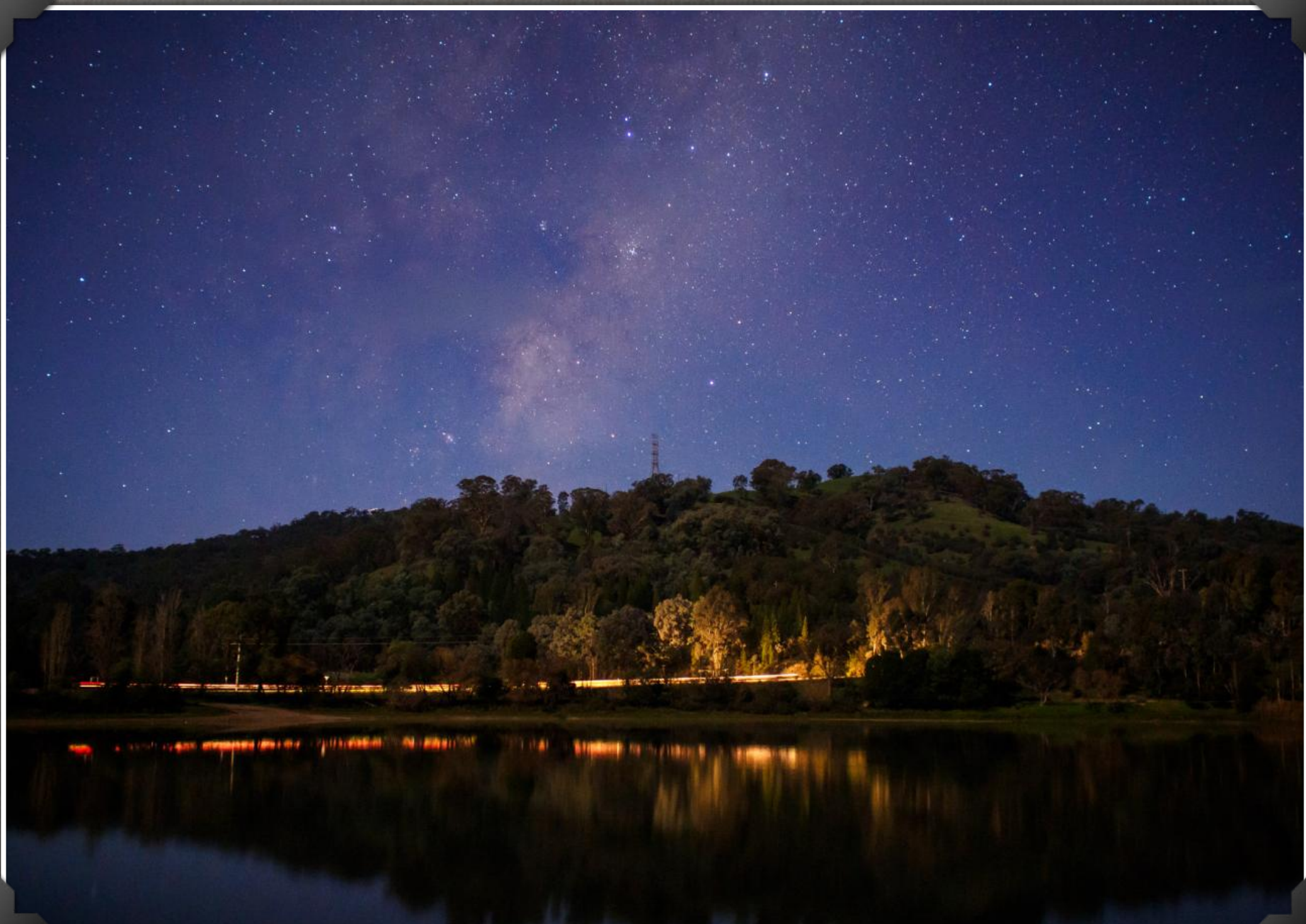


WINTER SOLSTICE

As we enter the season of winter an astronomical phenomenon known as the winter solstice occurs. This is where the days get shorter, leading to the shortest day and the longest night of the year. The winter solstice occurs around 21 June.



LONGER COLDER NIGHTS AND SHORTER DAYS



Photograph © Joshua Hibbert 2014

PRECIPITATION

Precipitation is the falling of water vapour that has previously risen into the atmosphere through condensation, and falls because of the Earth's gravity. Precipitation is most commonly known as rain, sleet, snow and hail.



RAIN



RAIN



RAIN



EILDON RAINBOW



YEA RAINBOW



RAIN INCREASES OUR WATER CATCHMENTS

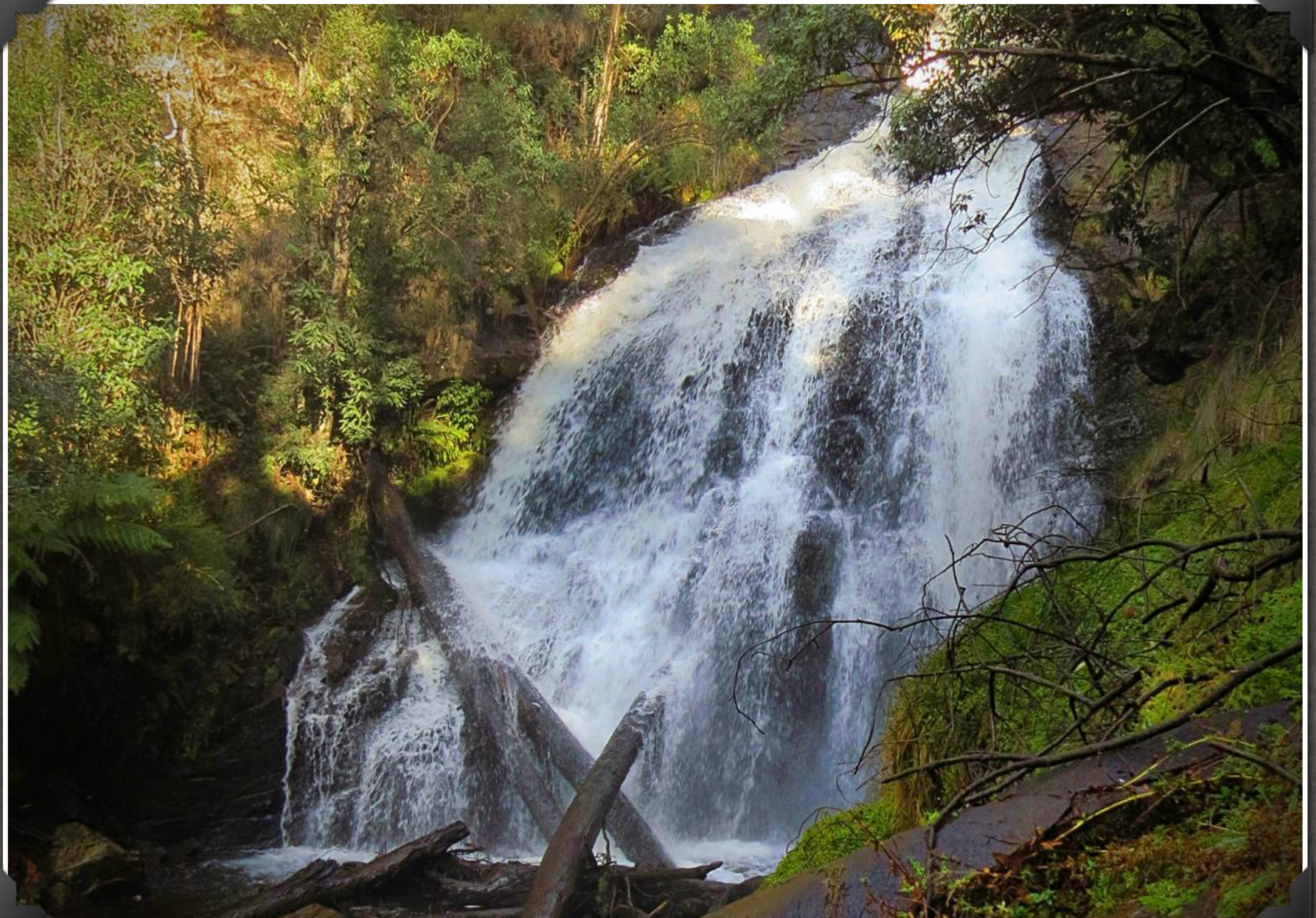
WATER
LEVELS
RISE



PUDDLE FORMING



WATERFALL FLOWING IN WINTER



WATERFALL FLOWING IN WINTER





NITROGEN

Rotting leaves and debris produce nitrogen as they decompose on the ground. Nitrogen is an essential element in amino acids and the building block of protein. Plants need nitrogen to grow and winter's increased moisture helps rotting organic material to produce it in abundance.





ROTTING LEAVES



ROTTING LEAVES



ROTTING LEAVES



ROTTING LEAVES



ICE

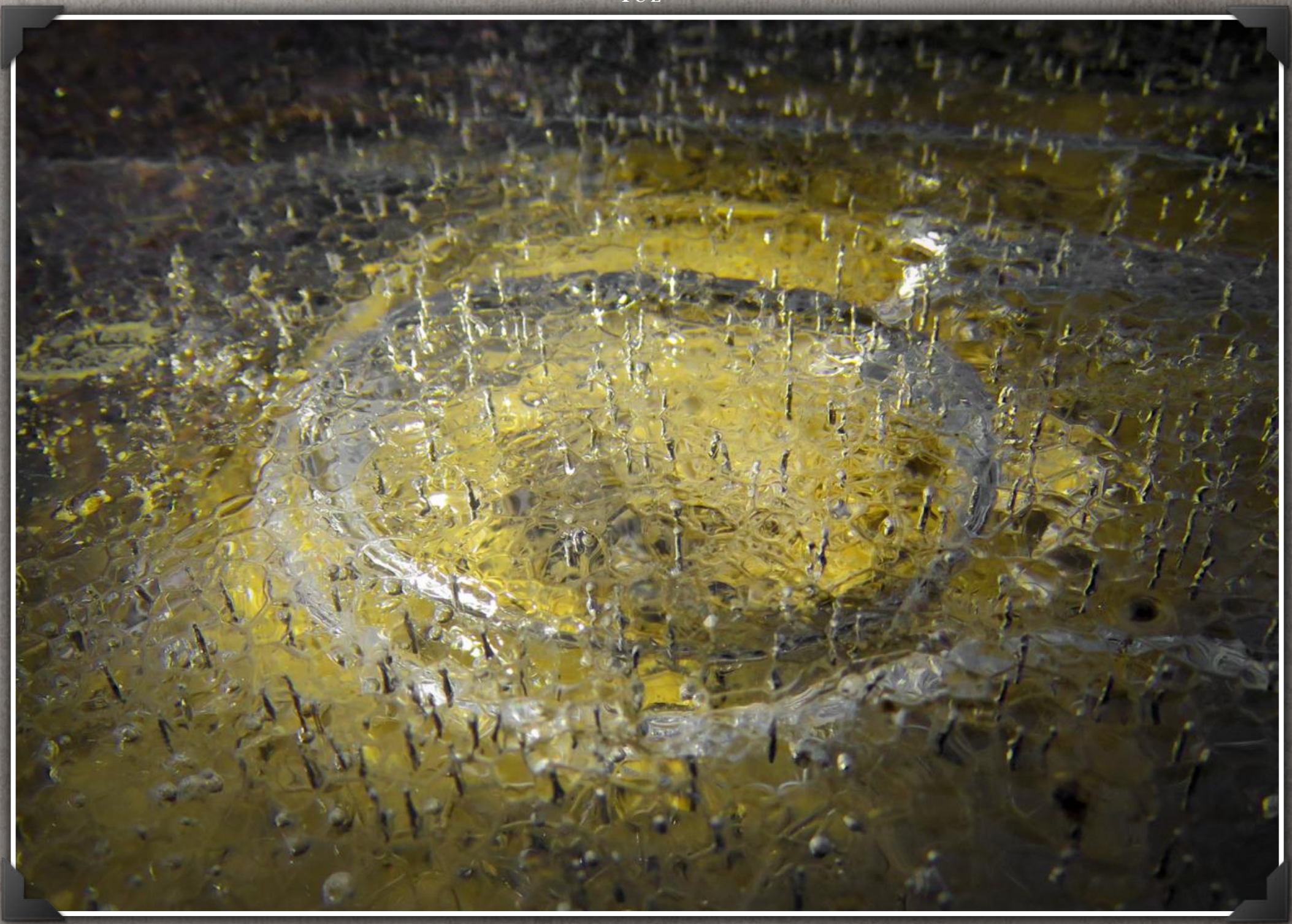
Frozen water that has cooled
into a solid state

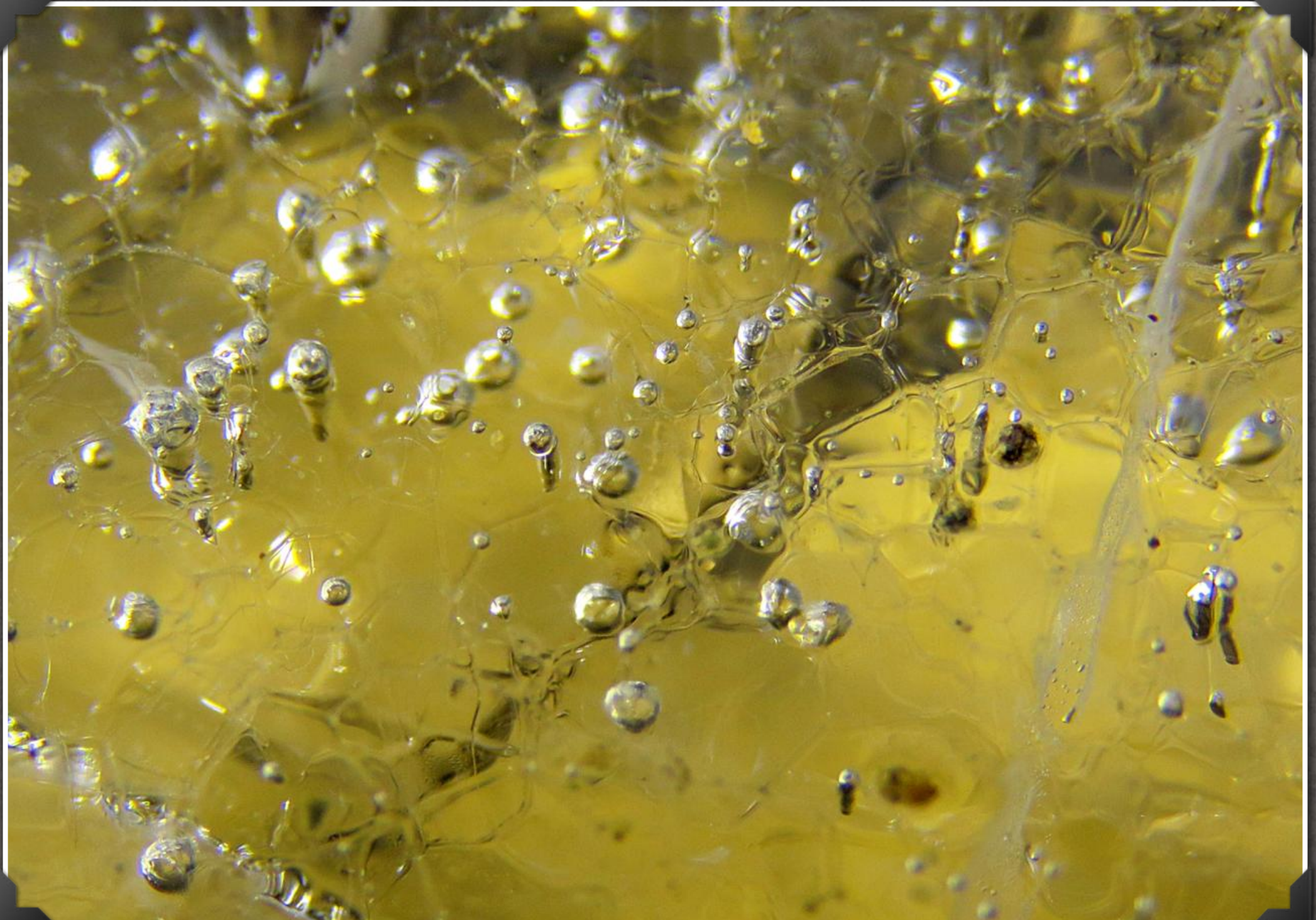




ROADSIDE PUDDLE

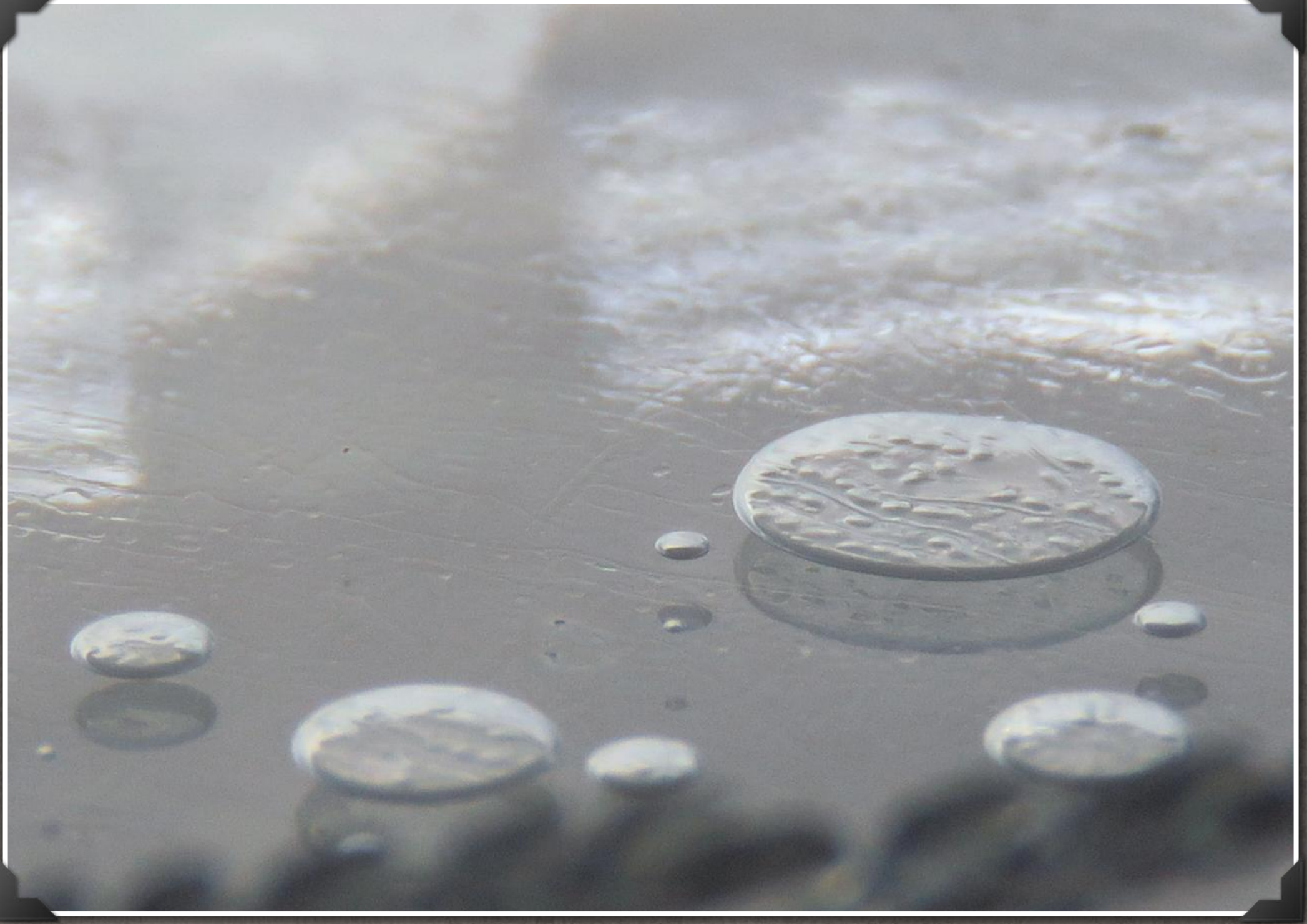






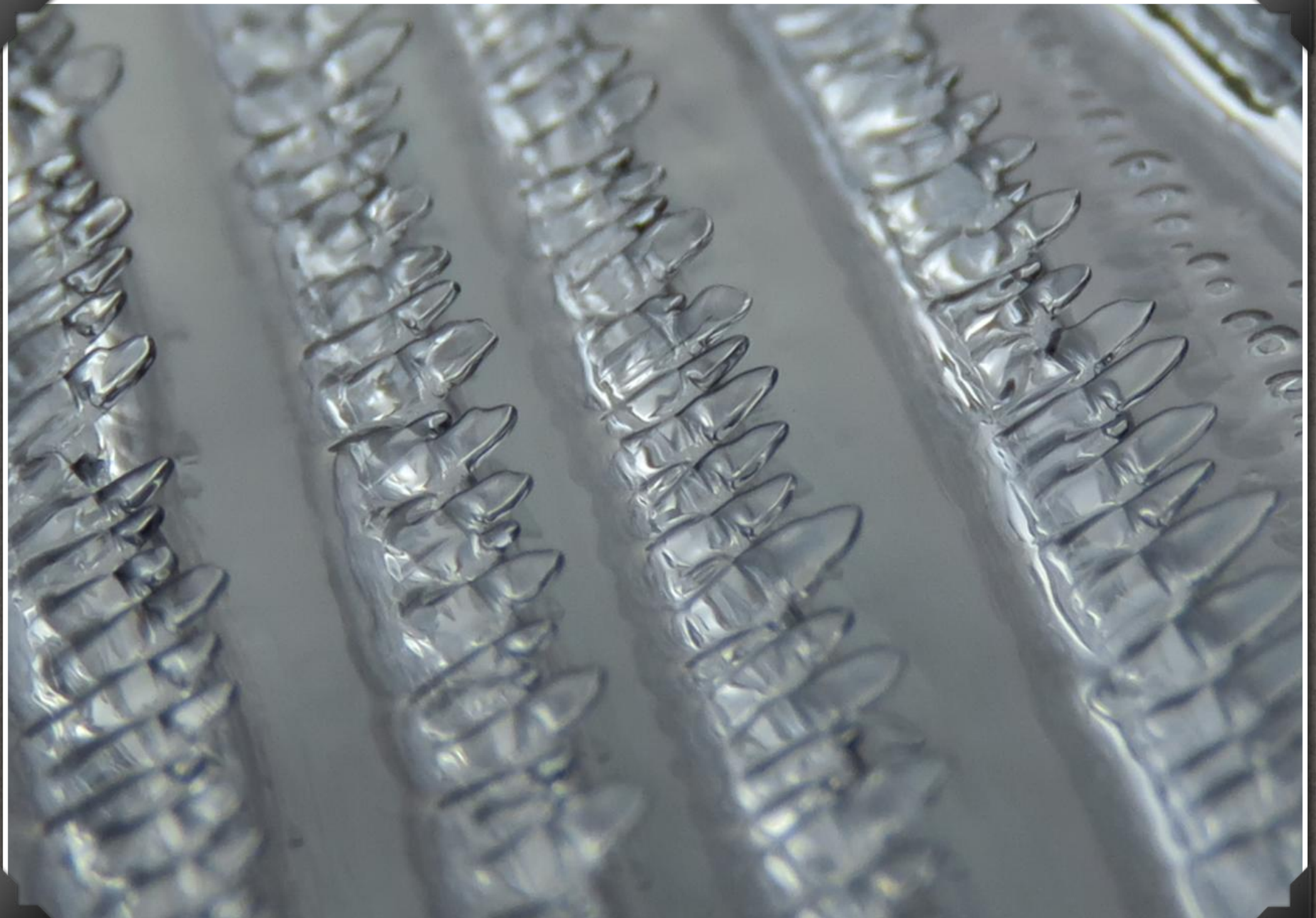






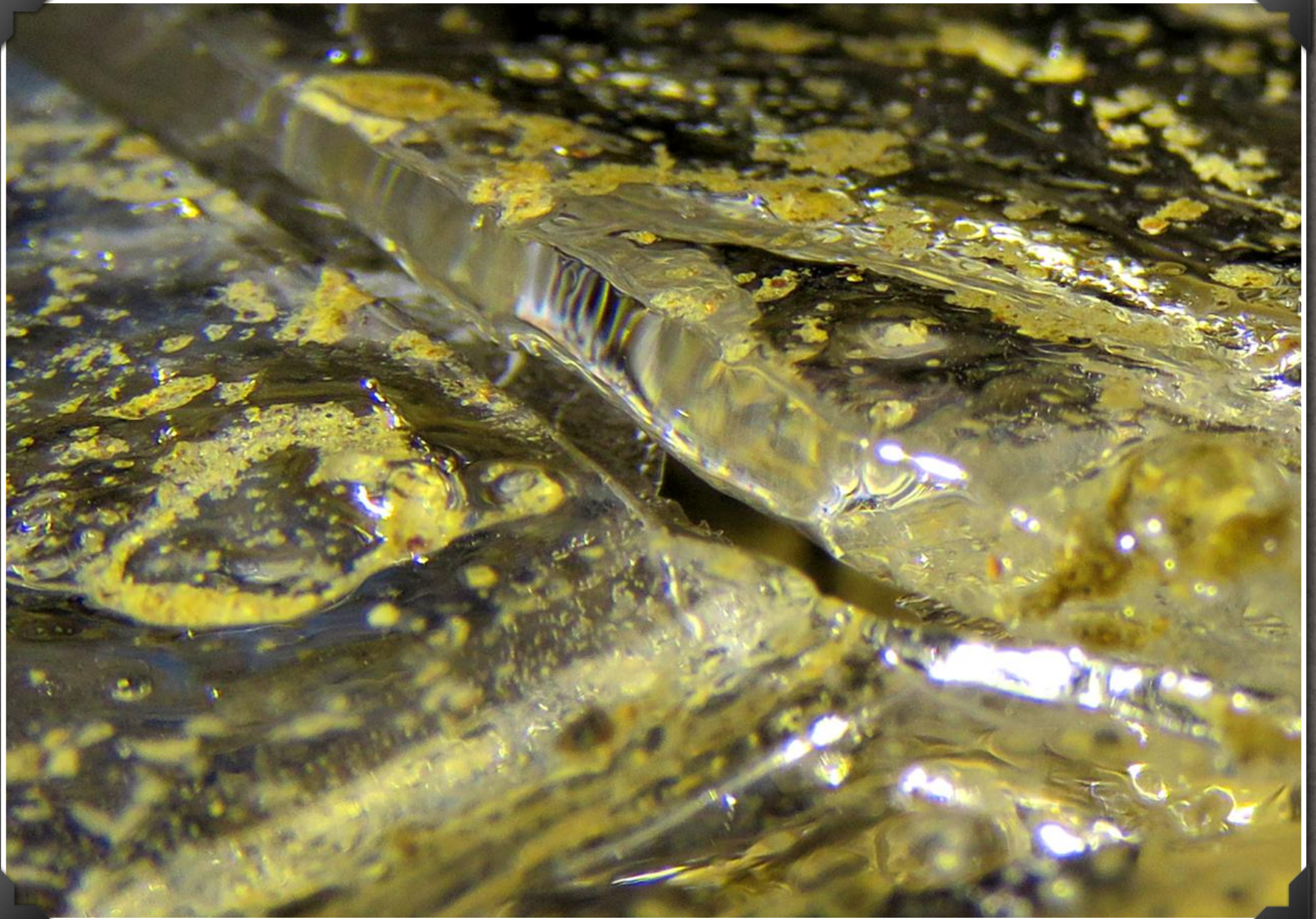


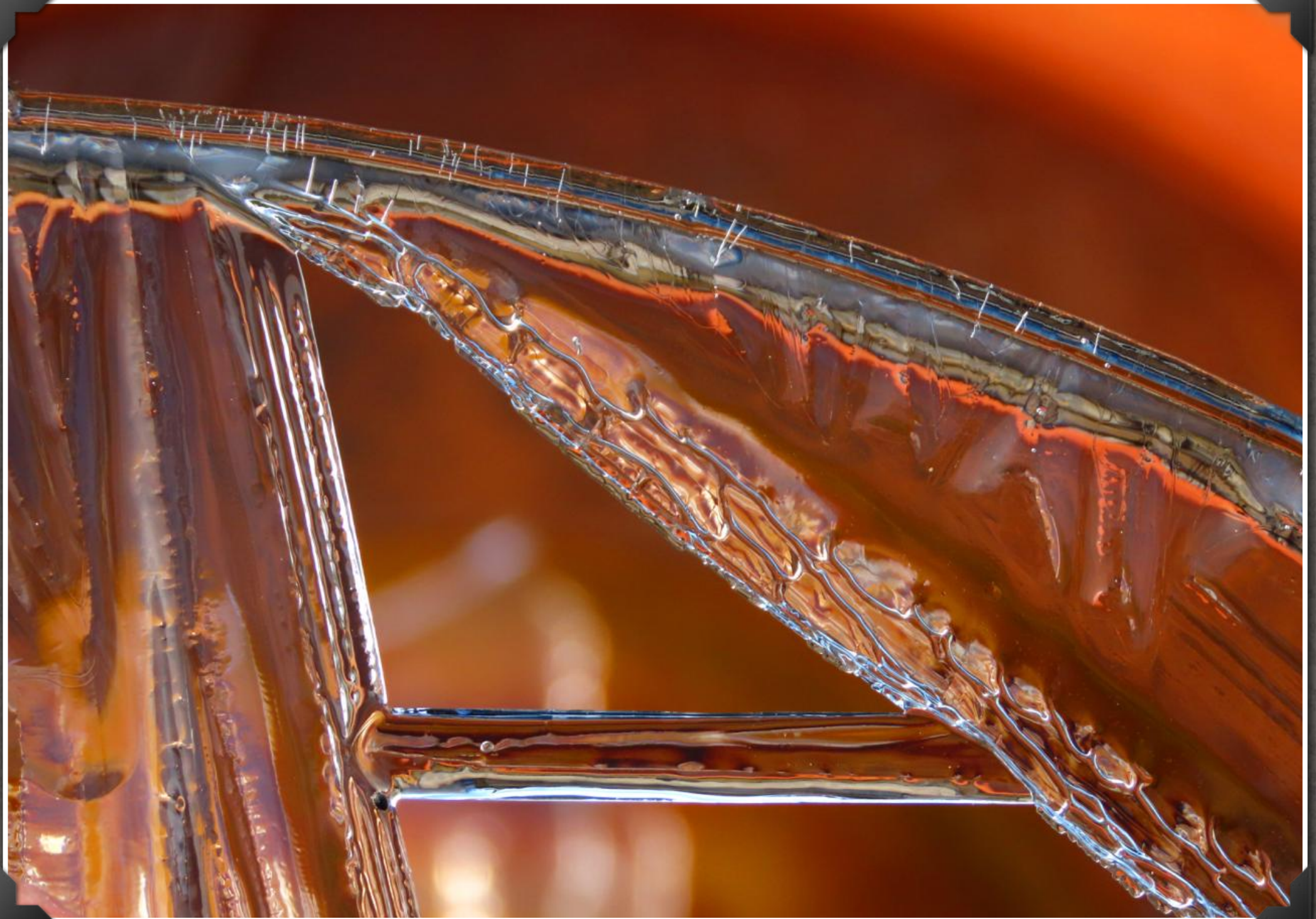












SNOW

Atmospheric water vapour frozen into ice crystals and falling in light white flakes or lying on the ground as a white layer of ice



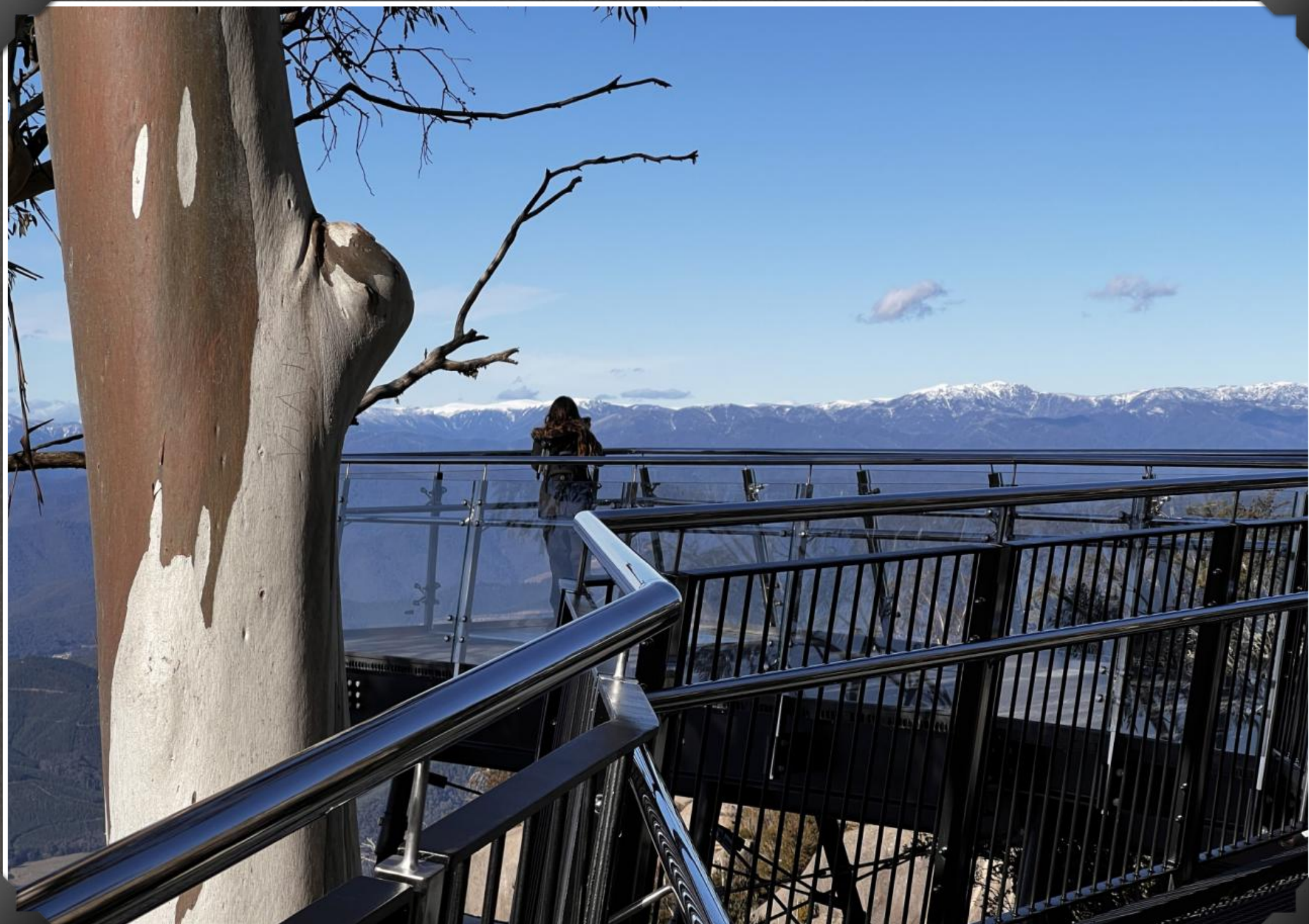
SNOW COVER



SNOW CAPPED MOUNTAINS







S N O W



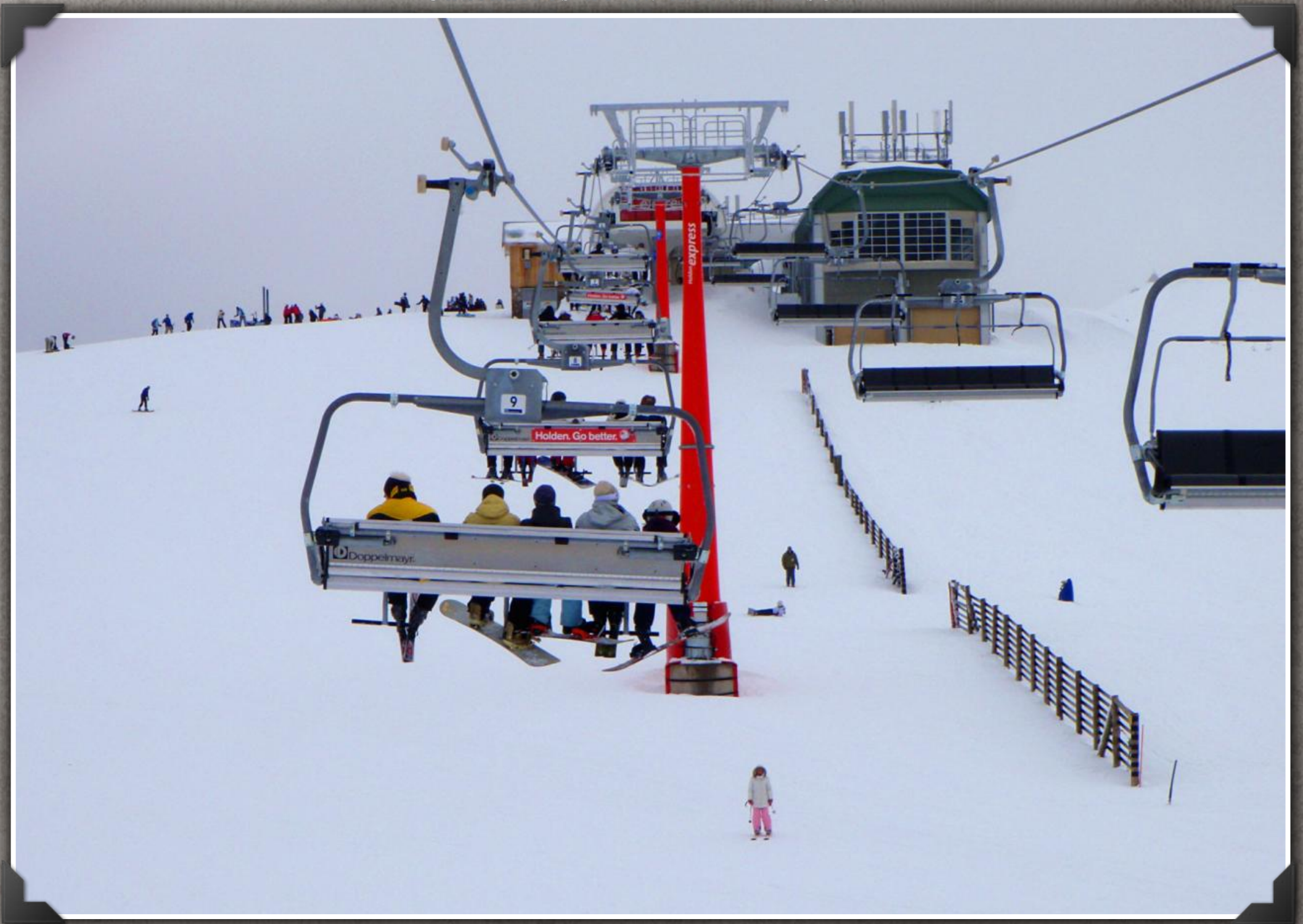
LENTICULAR CLOUD FORMING OVER A MOUNTAIN PEAK







CHAIRLIFTS AT AN ALPINE RESORT



MOUNT PINNIBAR, VICTORIA



SNOWMAN



FOG

Fog occurs in colder climates when the ambient temperature falls to the point where water present in the air condenses and becomes visible, or freezes to form visible ice crystals suspended in the air.

Fog can be considered a low flying cloud and often forms around bodies of water.



LOW CLOUDS



MORNING FOG



LOW CLOUDS



LOW CLOUDS







MORNING FOG



MORNING FOG



MORNING FOG



MORNING FOG



FROST

Frost occurs in colder climates when the ambient temperature falls to the point where water vapour in the air (water in gas form) becomes solid and forms on objects such as cars, windows, plants and grass.



FROST



FROST COVERED GRASS





FROST ON A PLANT





FROST ON LEAVES





FROST IN TREES



FROST IN GRASS



ICE BUILD-UP WHEN DRIVING ON A -0.5 DEGREES MORNING



CRYSTALLIZATION

The temperature in which a liquid becomes frozen. Most liquids freeze by crystallization.



FROST ICE CRYSTALS





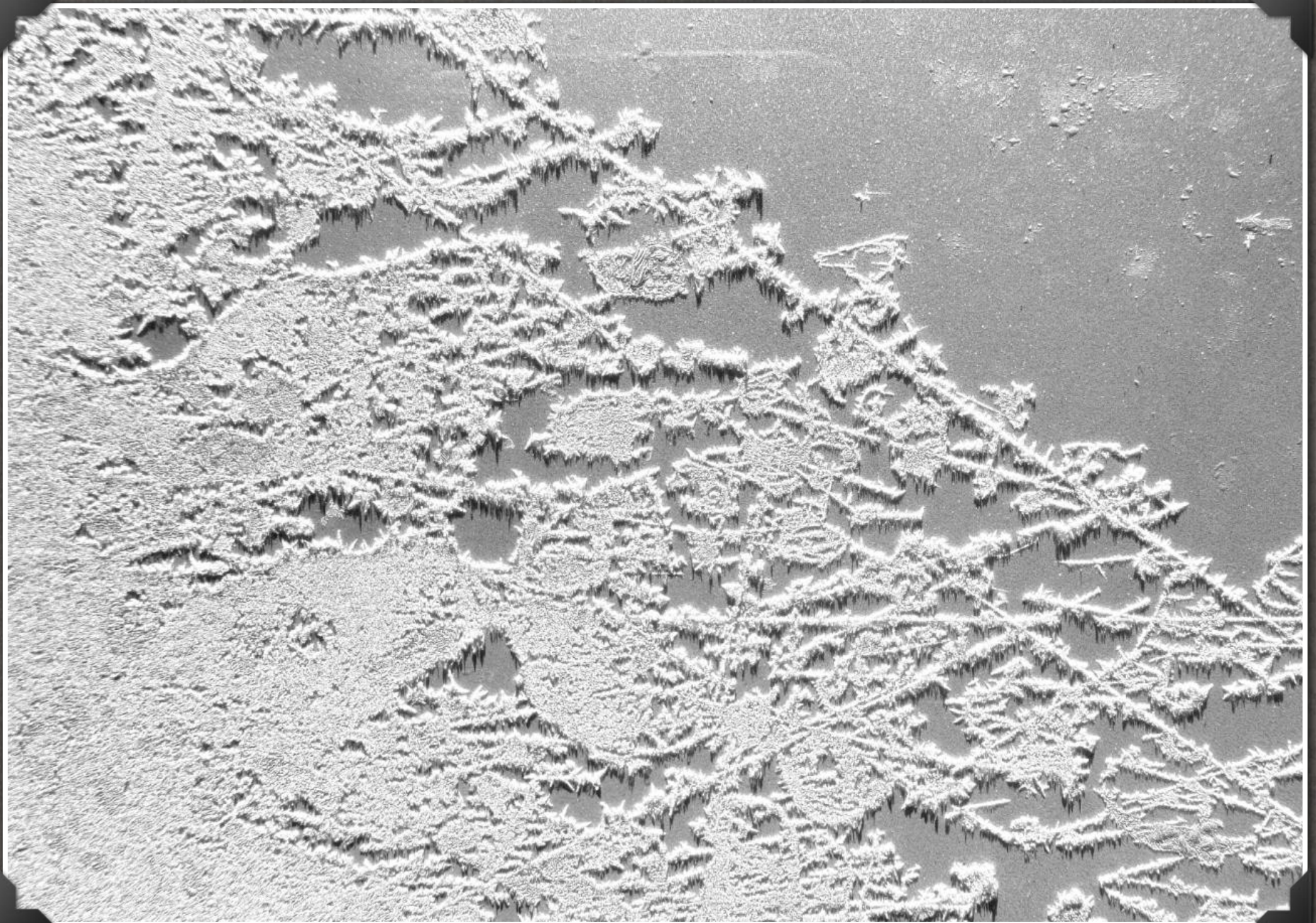
FROST ON GLASS



FROST ON GLASS



FROST ON PAINT





FLOOD

Flooding often occurs during the wetter winter months as an abundance of rain leads to water covering areas of land that are usually dry.



STORMS BRING RAIN



STORMS BRING RAIN



EXCESS RAIN CAUSES RUNOFF



RIVER BANKS BURST













FIRES

Winter is a time when fires are used for heating.
In times past fires were also widely used for cooking, however this is less common now.





CYCLE OF LIFE

During the cooler months, life continues to regenerate. Some flowers still bloom, many insects are still active, while others disappear until the warmth returns.



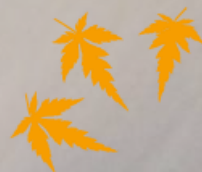
FLOODWATERS DISPLACE NATIVE ANIMALS



'epic'

epic - (adjective) *Surpassing the usual or ordinary*

ePic - (noun) *Illustrated by **electronic pictures***



The free Artworkz 'ePic Photo Group' eMagazine

This Issues ePic Photographers:

Shannon Carnes, Stephen Handbury, Debbie Hibbert, Joshua Hibbert and David Hibbert

An Artworkz eSplash Publication

First published 2014