

The
official
Magazine
of the
Artworkz
Photo
Group

epic
ARTWORKZ

Spring



- EPIC PHOTOGRAPHERS -



Spring

- Season -

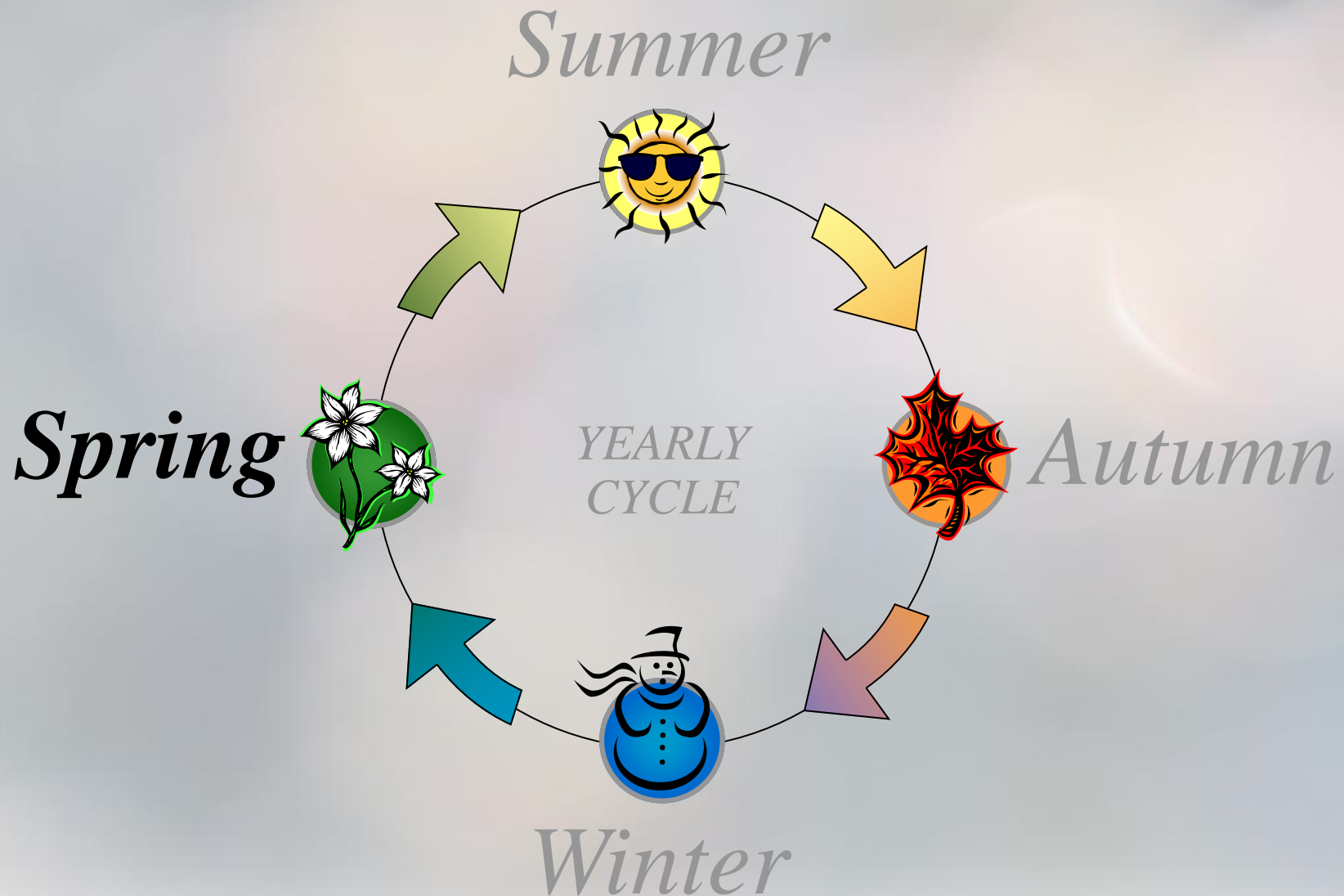
Our year is divided into four seasons, each made up of three months.

Each season is known for its weather, temperature, daylight and colour.

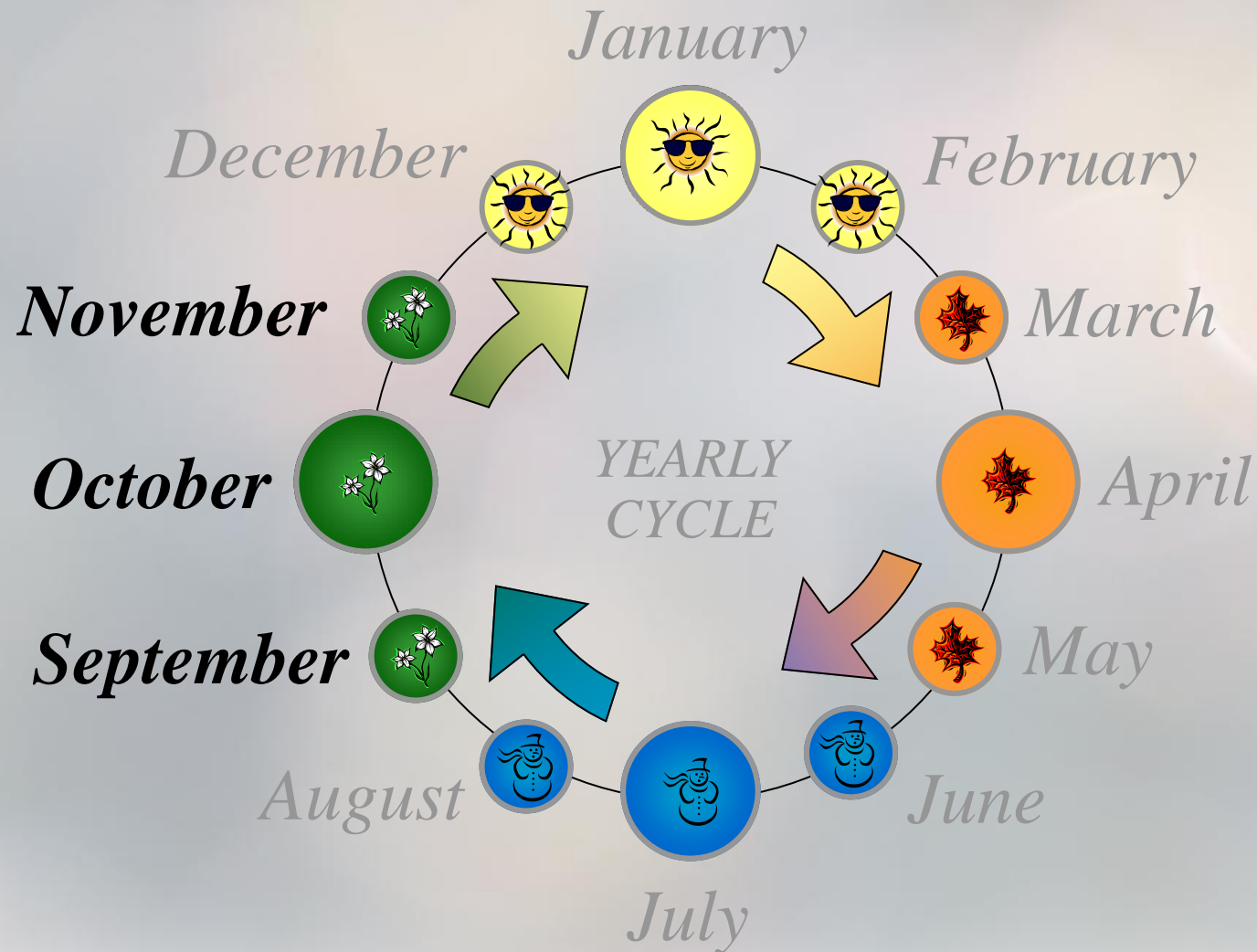
They are also known by how nature responds to them.

Every season is different due to the Earth's changing position in relation to the Sun.

THE FOUR SEASONS



MONTHS OF SPRING IN THE SOUTHERN HEMISPHERE



COLOURS OF FLORA IN SPRING



Spring has the second largest colour range of all the seasons

MONTHS OF SPRING
IN THE SOUTHERN HEMISPHERE

The following pictures
highlight the season
of spring

F O G



FOG



MIST



MIST



MIST







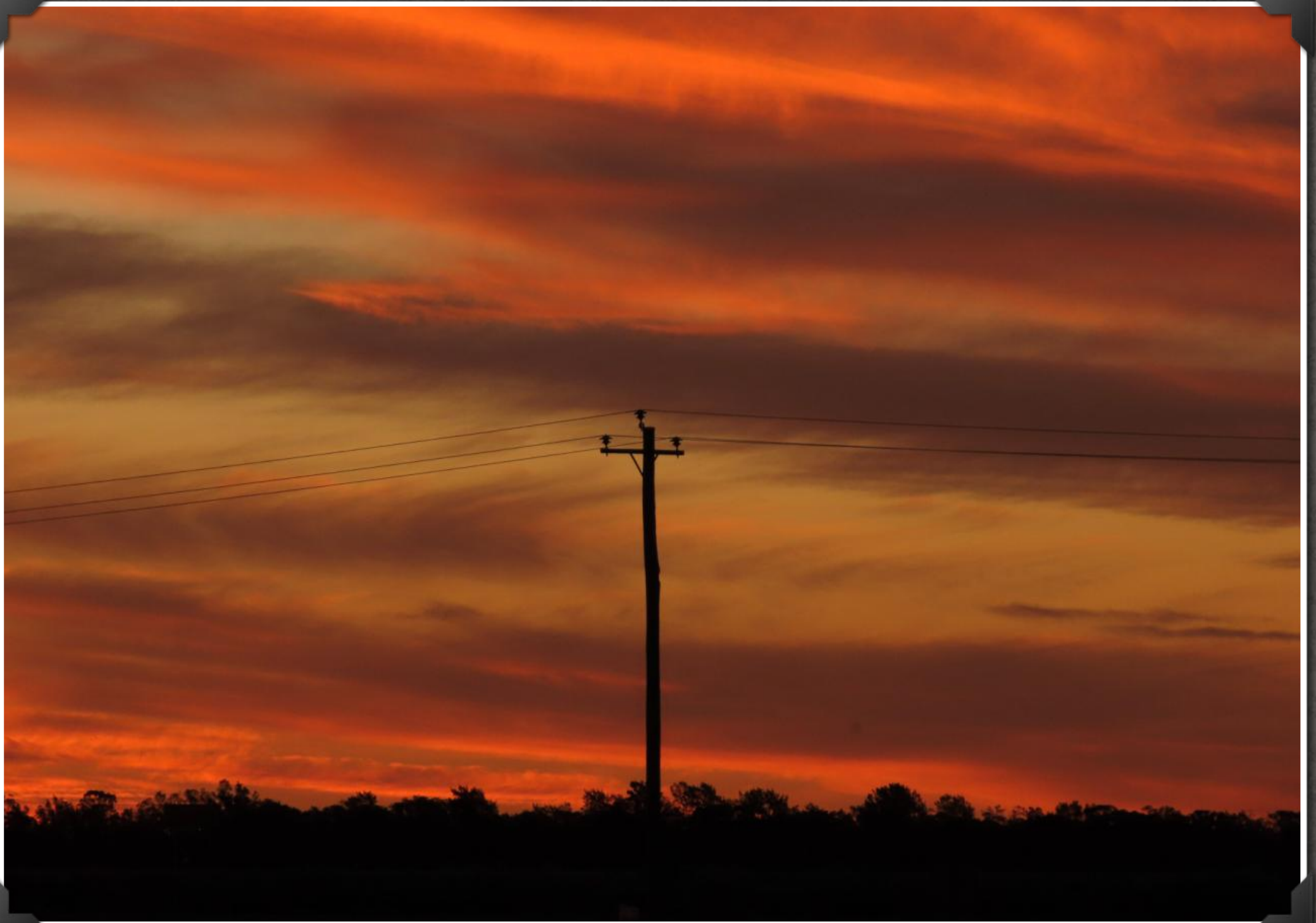
FORESTS ARE LUSH



GRASS IS GREEN



STUNNING SUNSETS



SPRING

As spring approaches the days get longer and warmer, birds begin to breed, insects return in force, animals become more active and humans enjoy the outdoors more. Plants produce new buds and flowers, and grow at a faster speed than in other seasons.



SPRING RAIN FILLS WATERWAYS



SPRING RAIN FILLS WATERWAYS



SPRING RAIN FILLS WATERWAYS



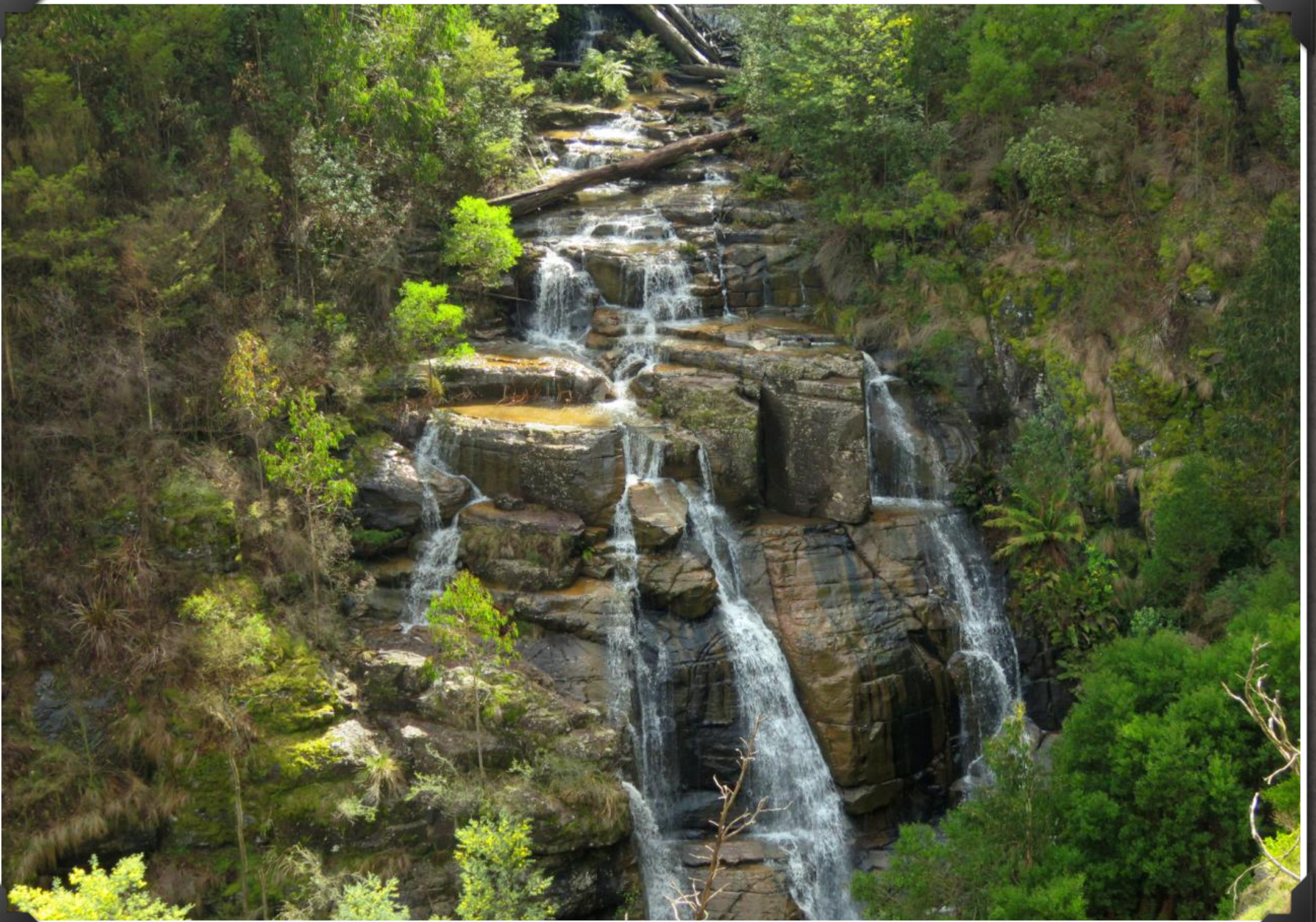
SOUTHBANK RAIN



TYAAK DOUBLE RAINBOW

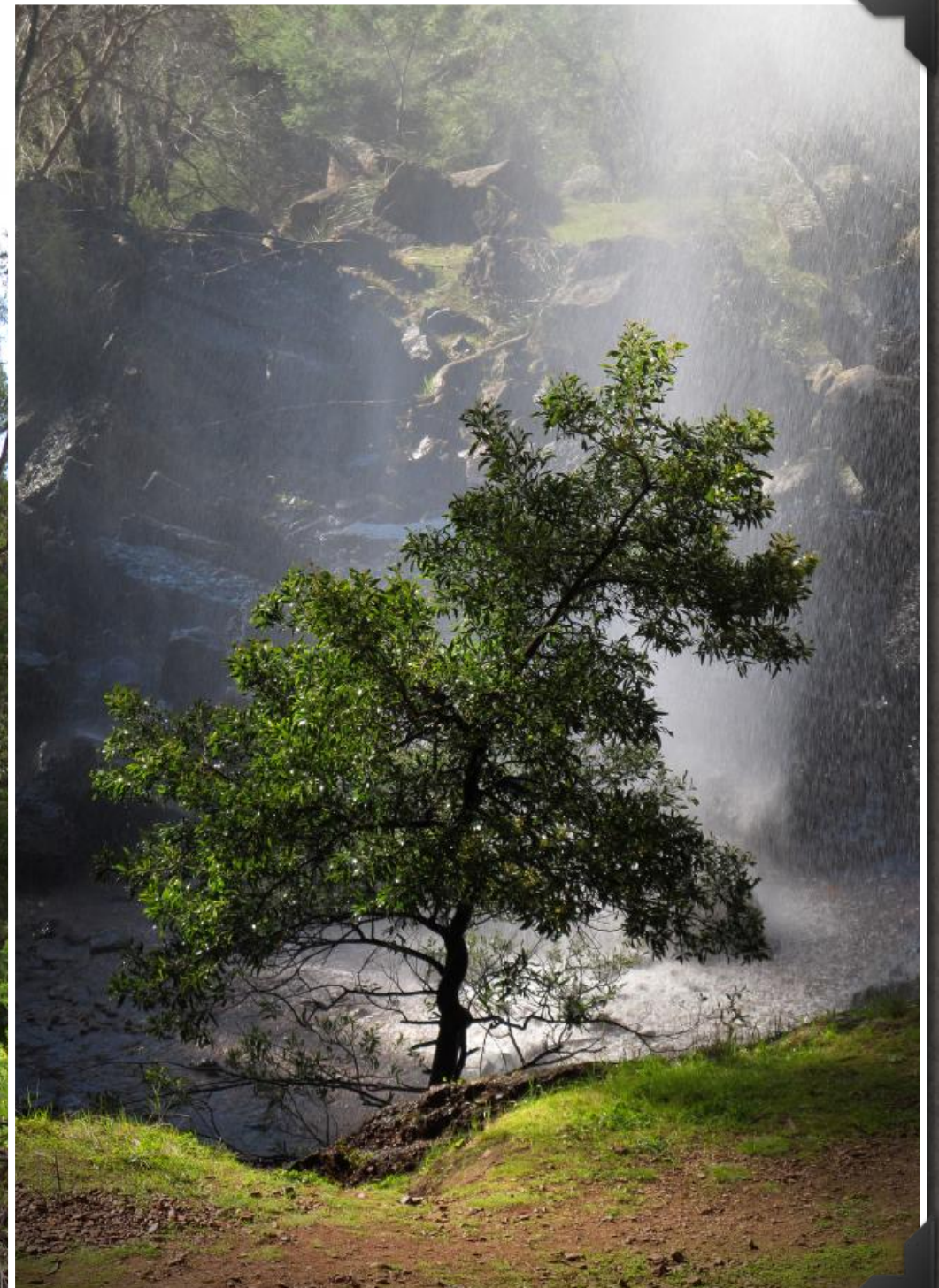


WATERFALLS ARE BEAUTIFUL



WATERFALLS ARE BEAUTIFUL





RIVER LEVELS ARE HIGH



Copyright © John Norbury 2013

ANIMALS

As the weather warms up, animals become more active and their food becomes more abundant.







KANGAROOS CARRY THEIR YOUNG IN THEIR POUCHES



WALLABIES ENJOY SPRING



WOMBATS ARE MOVING AROUND



POSSUMS ARE OFTEN MORE VISIBLE





REPTILES

As the temperature warms up in Spring,
reptiles become more active.



SNAKES BECOME MORE ACTIVE



BLUETONGUE LIZARDS MOVE AROUND IN SPRING



EASTERN BEARDED DRAGONS ENJOY THE WARMTH OF SPRING



SKINKS ARE ACTIVE IN SPRING



CENTRAL BEARDED DRAGONS ARE ACTIVE IN SPRING



INSECTS

Insects are much more abundant in the warmer periods of late Spring, Summer and early Autumn.







BEES ARE MORE ACTIVE IN SPRING













MOLLUSCS

Molluscs are active in Spring.



SNAILS ARE ACTIVE IN SPRING



SLUGS ARE ACTIVE IN SPRING



BIRDS

Birds are more active and build nests and homes in Spring. Spring also means there is more food available for them.



LARGE BIRDS SUCH AS THE KOOKABURRA ARE ACTIVE



SMALL BIRDS SUCH AS FANTAILS ARE ACTIVE





CRIMSON ROSELLAS ARE ACTIVE IN SPRING



PELICANS ARE ACTIVE IN SPRING



NATIONAL WATTLE DAY

The first day of Spring in Australia is also known as Wattle Day. This is because many acacia species (known as wattles) are in flower.

It is normal that people wear a piece of wattle on this patriotic day.



WATTLE IS BLOOMING BY SEPTEMBER



WATTLE IS BLOOMING BY SEPTEMBER



INSECTS FEED ON WATTLE FLOWERS



OTHER TREES BLOOM IN SPRING



BURGAN SCRUB BLOOMING IN LATE SPRING



BURGAN SCRUB BLOOMING IN LATE SPRING



SPRING EQUINOX

As we enter the season of spring an astronomical phenomenon known as the spring equinox occurs. It happens twice a year when the night and day are around the same length. The spring equinox always occurs around 22 September.



GRASS TREES ARE HEALTHY



THE EARLY NANCY IS ONE OF THE FIRST WILDFLOWERS TO BLOOM IN SPRING



THE BROAD-LEAVED PEPPERMINT FLOWERS IN EARLY SPRING



THE NODDING GREENHOOD ORCHID APPEARS IN SPRING



SPRING TREE SAP



NEW BUDS



NEW GROWTH

Spring plants spring forth with new growth. This is usually very visible, especially on plants that have lost their leaves during the Winter period.



NEW GROWTH



NEW TREE GROWTH APPEARS IN SPRING









MOSS, LICHEN AND FUNGI

In Spring, Moss, Lichen and Fungi
are moist and very healthy.

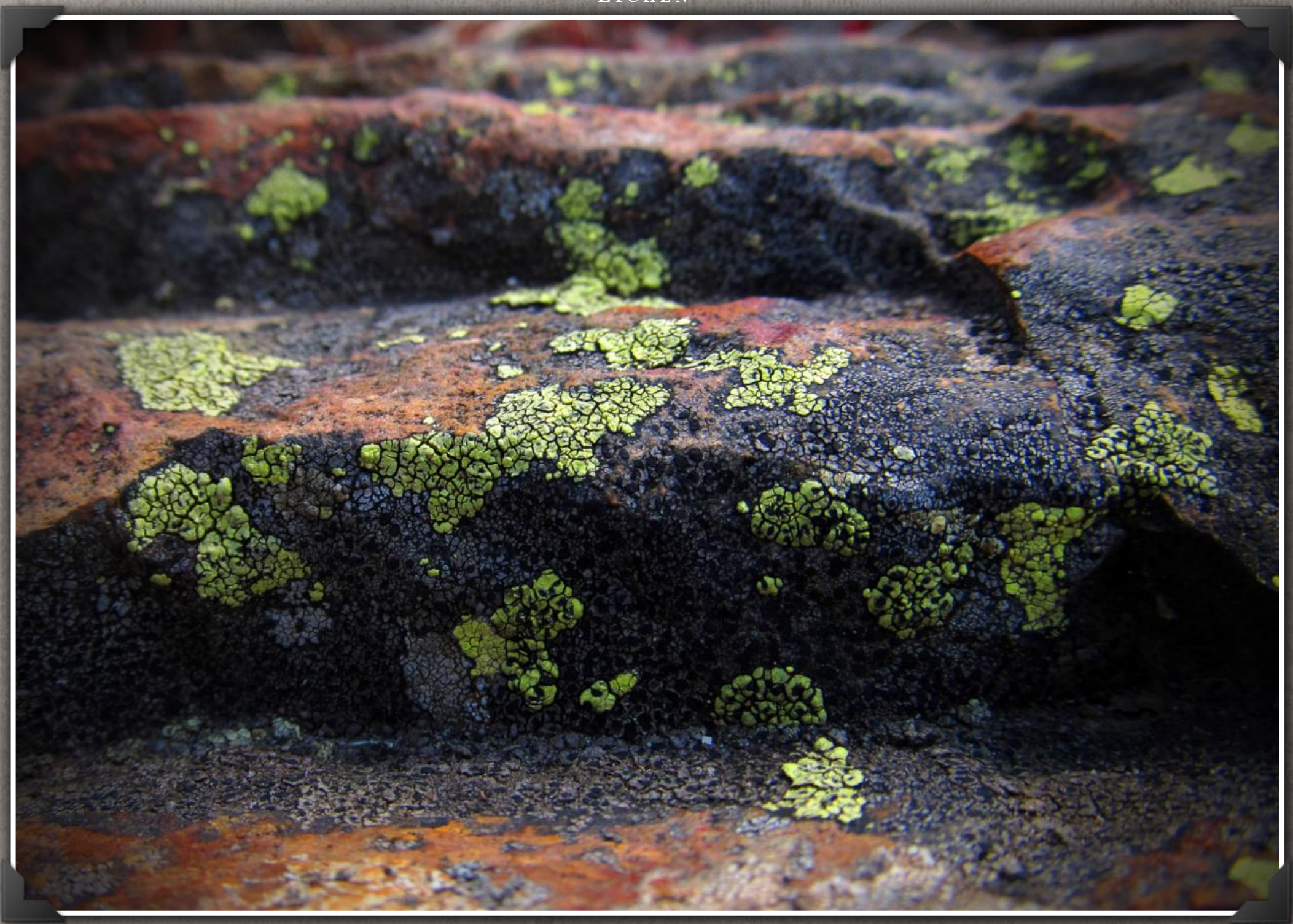


MOSS IS MOIST AND HEALTHY



LICHEN IS MOIST AND HEALTHY





FUNGI IS MOIST AND HEALTHY



POLLINATION

Pollination is the process of pollen being transferred to the female reproductive organ of a plant, allowing fertilisation to occur.

Insects are vital to pollination.



POLLEN IN THE CENTRE OF A FLOWER



POLLEN IN THE CENTRE OF A FLOWER







CYCLE OF LIFE

As the warmer months approach, life regenerates.

We see a new cycle of life, where a new generation of life is born.













PARENTS FEED THEIR YOUNG



CHICKS WAIT FOR THEIR PARENTS TO BRING THEM FOOD





BLACK SWAN AND CYGNETS





RECREATIONAL ACTIVITY

The warming weather of Spring draws people outside. It is a time when people feel happier as the days become longer, the light becomes brighter, and it is warm enough to be outside having fun.

WARMER DAYS BRING OUT TOURISTS



WARMER DAYS BRING HUMAN RECREATIONAL ACTIVITY



BOATING IS POPULAR IN SPRING



SPRING SIGHTSEEING



ARTISTS ENJOY WARMER SPRING DAYS



PHOTOGRAPHERS ENJOY SETTING UP AND CAPTURING SPRING FLOWERS







PHOTOGRAPHING WATER PATTERNS IS POPULAR IN SPRING



PHOTOGRAPHING WATER DROPLETS IS POPULAR IN SPRING



DAYLIGHT SAVING

Daylight saving was first mentioned by American politician/inventor Benjamin Franklin in 1784 as a way to reduce lighting costs. It was first introduced by the German Empire and Austria-Hungary on 30 April 1916. In Australia it commences in Spring.



CROPS GROW DURING SPRING



CANOLA GROWS DURING SPRING



GRAIN GROWS DURING SPRING



BURNING OFF OCCURS DURING SPRING



'epic'

epic - (adjective) Surpassing the usual or ordinary

ePic - (noun) Illustrated by electronic pictures



The free Artworkz 'ePic Photo Group' eMagazine

This Issues ePic Photographers:

Shannon Carnes, Debbie Hibbert, Kathie Maynes, John Norbury, Bob Tate and David Hibbert

An Artworkz eSplash Publication

First published 2014