

epic  
The  
official  
Magazine  
of the  
Artworkz  
Photo  
Group  
ARTWORKZ

Leaves

- DAVID HIBBERT -





GET UP  
GET OUT  
GET EXPLORING

# Leaves

- David Hibbert -

Leaves are an organ of a plant, and they constantly surround us. They are vital to the lifecycle of nature and are also pretty and picturesque. They are the more prominent features of trees and bushes with which we interact with every day.

This small ePic shows us some leaves and some of the states that leaves can exist.



Glossary of  
leaf morphology

# CONTENTS

SHAPE

PARASITES

DECAY

LEAF ART

LEAF LETTER



# LEAF

An external organ of a plant which is the main appendage of a stem.

A leaf is made up of two parts; the Blade and the Leaf Stalk (petiole).

















# LEAF SIZE

Leaf sizes range from just a few square millimetres (*Eutaxia microphylla*) to one square metre (*Musa textilis*).

*Raphia regalis* is an evergreen palm tree and has one of the longest leaves in the world.









GIANT ELEPHANT EAR (*Colocasia gigantea*)









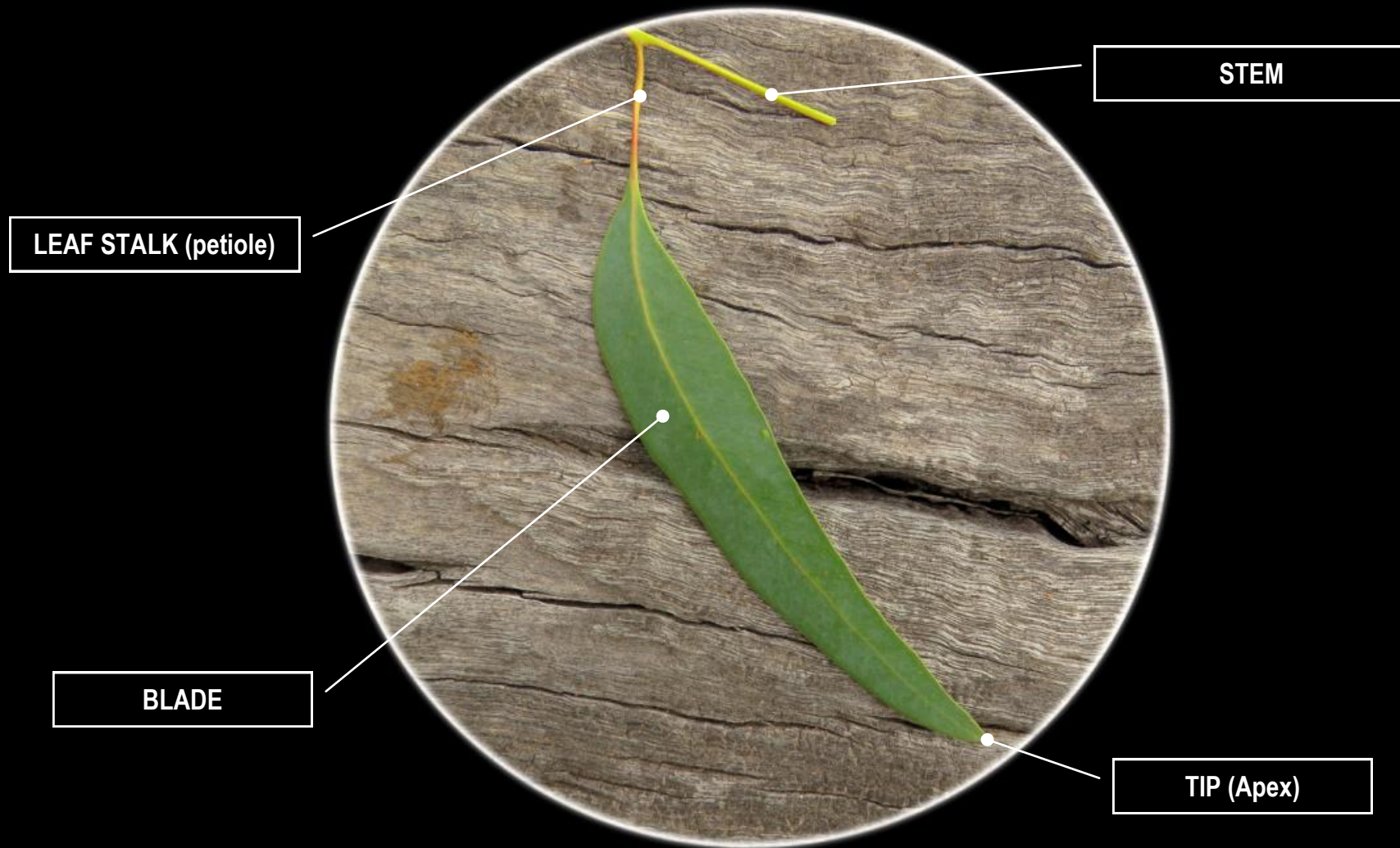








# LEAF PARTS













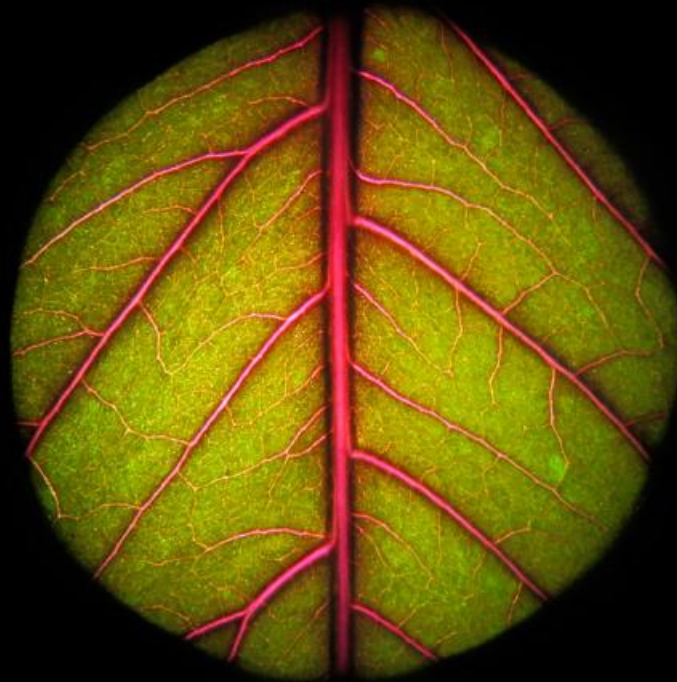








# VENATION



The arrangement of veins in a leaf is called venation.  
Click the veins for more.



# LEAF VEINS

























# SHAPE

Leaves are defined by shape and we have included a few leaf shapes.

They also grow into unusual shaped.



# COMMON SHAPES

Oval



Palmate (lobed)



Deltoid



Ovate



Palmate (lobed)





# COMMON SHAPES

Obovate



Elliptic



Palmate (lobed)



Oval



Falcate











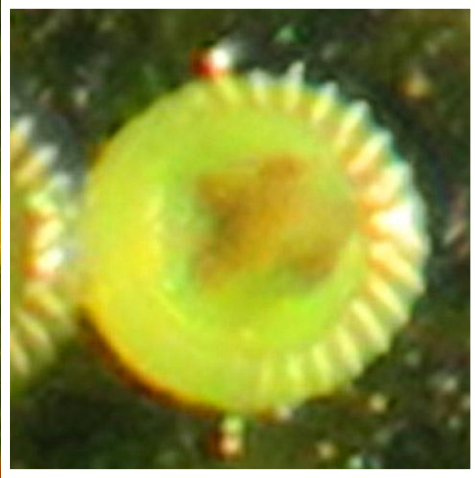


# PARASITES

Leaves attract parasites that live of the nutrients found in the leaf.



UNKNOWN INSECT EGGS ON A SUGAR GUM LEAF





GALL WASP GALLS ON A EUCALYPT LEAF















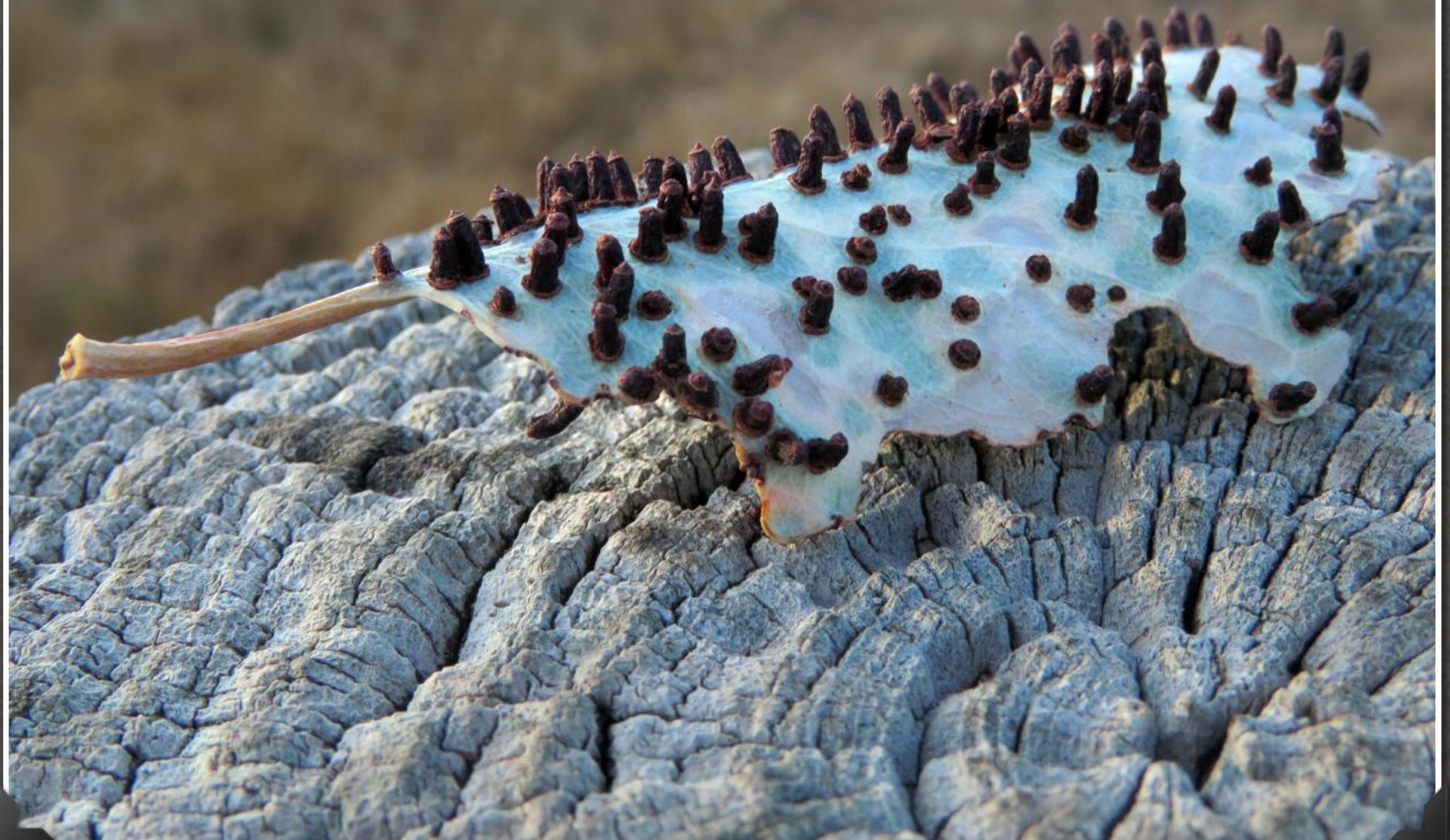














# DECAY

As leaves die, they fall to the ground and decay.  
As they decay, they change colour and nutrients found in the leaf are slowly returned to the soil.

























Photograph © Debbie Hibbert 2017



MYRTLE BEECH UNDERSTORY









HOLES EATEN BY AN INSECT





A LEAF HELD UP BY AUSTRAL BRACKEN FERN









# LEAF ART

Leaves can have unusual and interesting shapes and markings that are art-like.



















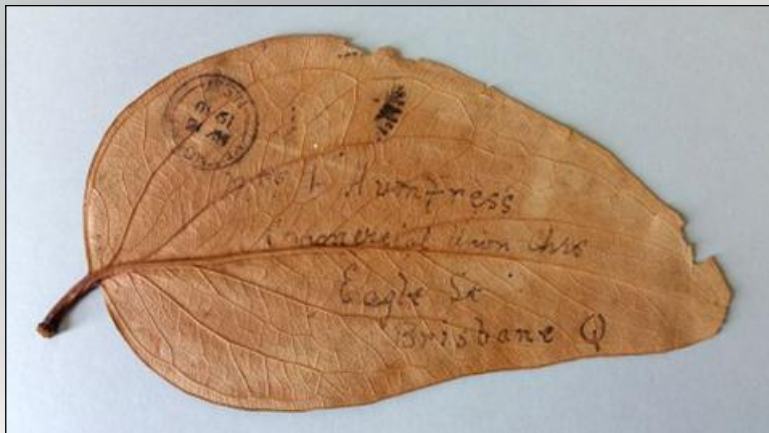
# LEAF LETTER

A leaf used as a letter in early Australia.

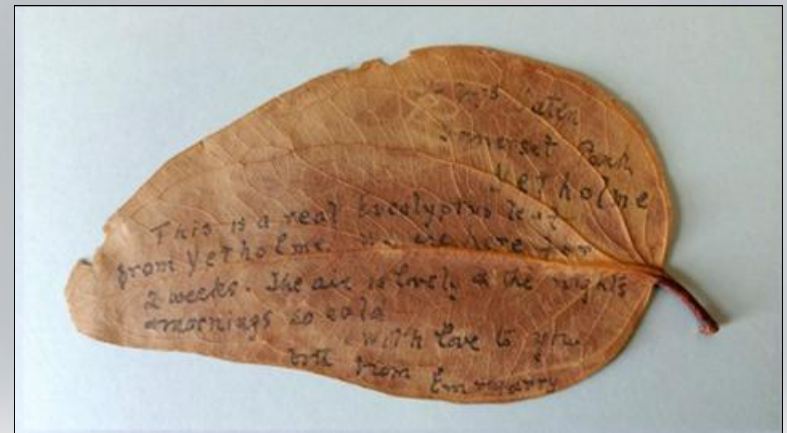


# LEAF LETTER

In 1910, a newly married couple honeymooning in Yetman, NSW, mailed a large gum leaf with a message to Mrs F Humfress at the Commercial Union Chambers, Eagle Street. It survives in good condition at the State Library of Queensland.



From Accession 6190 General Post Office  
Collection, John Oxley Library,  
State Library of Queensland.





# ***'epic'***

*epic* - (adjective) *Surpassing the usual or ordinary*

*ePic* - (noun) *Illustrated by **electronic pictures***



## **The Artworkz 'ePic Photo Group' eMagazine**

This Issues ePic Photographer: David Hibbert

An Artworkz eSplash Publication.

First published 2018