

ARTIST & PHOTOGRAPHER



LIN CUMMING



**HERITAGE
SERIES**

PHOTOGRAPHER LIN CUMMING

CONTRIBUTORS

State Library Victoria

Sandra Cumming
(Photographer Lin Cumming)
David & Debbie Hibbert

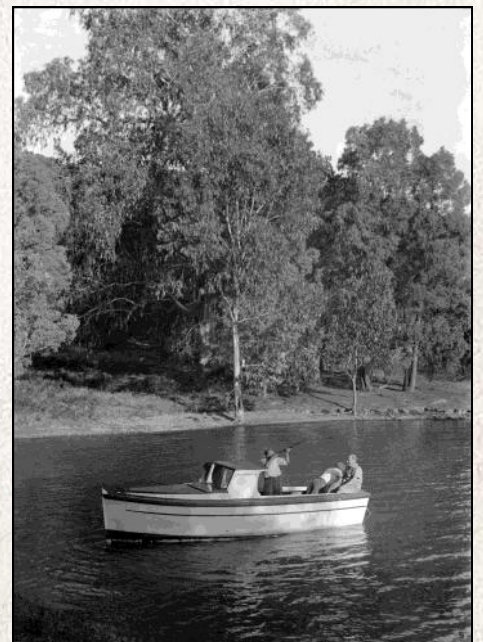
HISTORIC GALLERY

GALLERY



*THORNTON-PICKARD
SPECIAL RUBY
ALTRINCHAM*

(Above) Lin Cumming's actual camera photographed in 2010

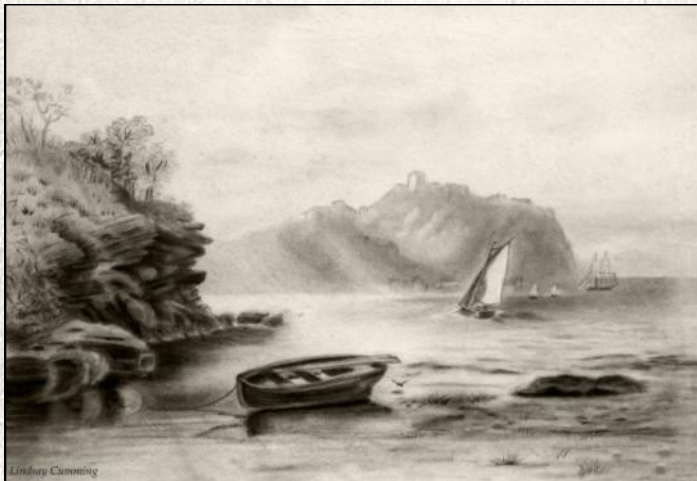


HISTORIC GALLERY

GALLERY



Three of Lin's illustrations are shown here. The horses were drawn when Lin was just twelve years of age at the Mansfield Convent of Mercy, and hung in his parents home for many years.



LIN CUMMING COLLECTION

District imagery from yesteryear!



Hugh Gilmore

DRAFT HORSES

This beautiful farm scene shows draft horses at *Hughendon*, on the Goulburn River at Gilmore's Bridge near Thornton. It was then owned by farmer Hugh Gilmore (right) and remains in the Gilmore family today.

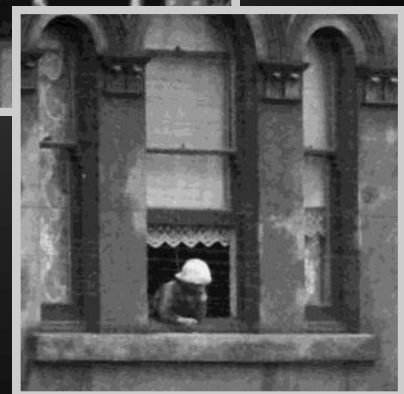
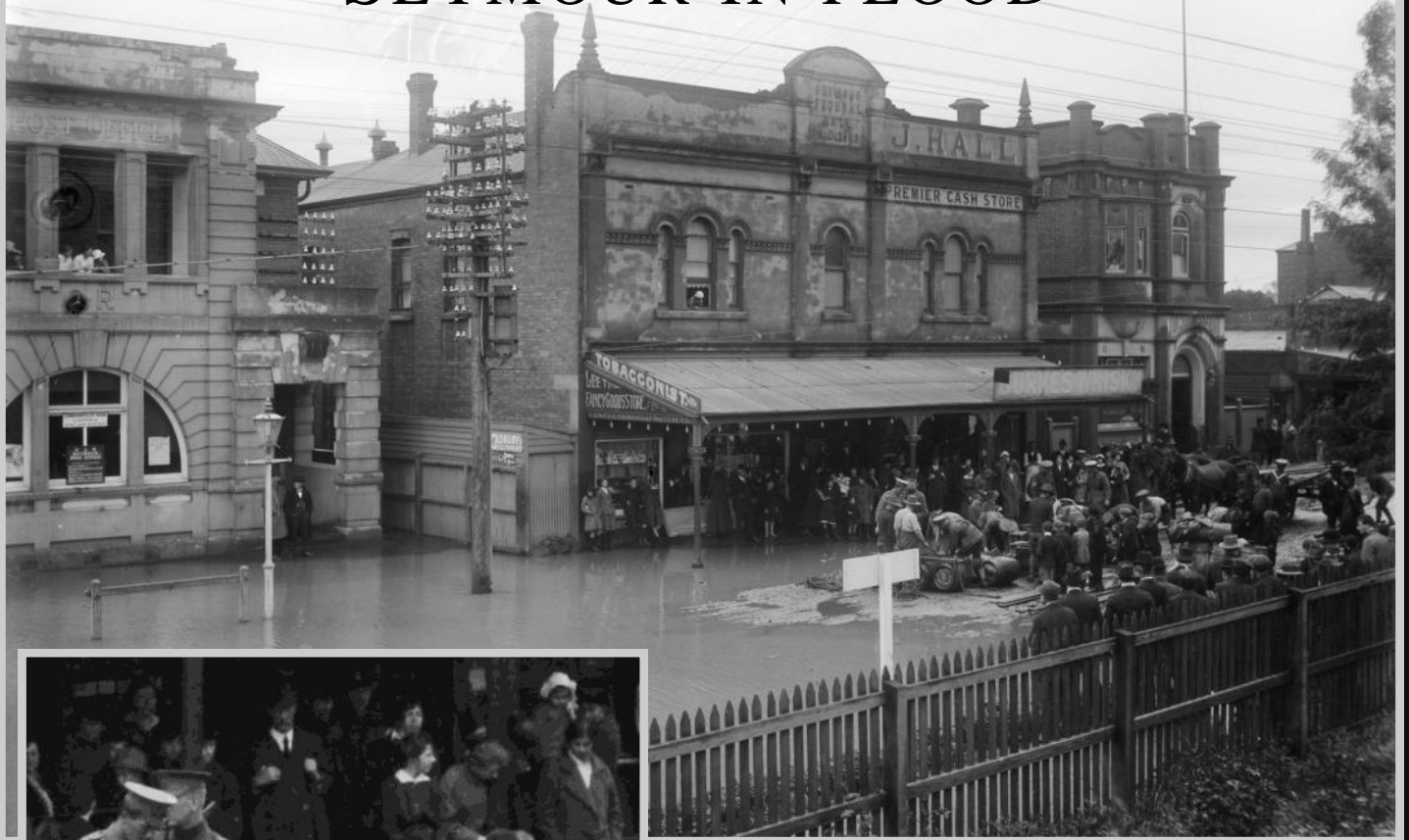
Horses were used on farms for numerous tasks such as ploughing fields and pulling drays and wagons.



LIN CUMMING COLLECTION

District imagery from yesteryear!

SEYMOUR IN FLOOD



We know very little about this photograph except from what can be seen. Men in uniform are building rafts to operate on the flood waters, which occupy much of the main street of Seymour. Onlookers look on from street level and above. The date of the photograph was listed as 1902 on the State Library Site, though it is more likely of the great September 1916 flood event as no floods are listed for 1902. Any help would be appreciated.

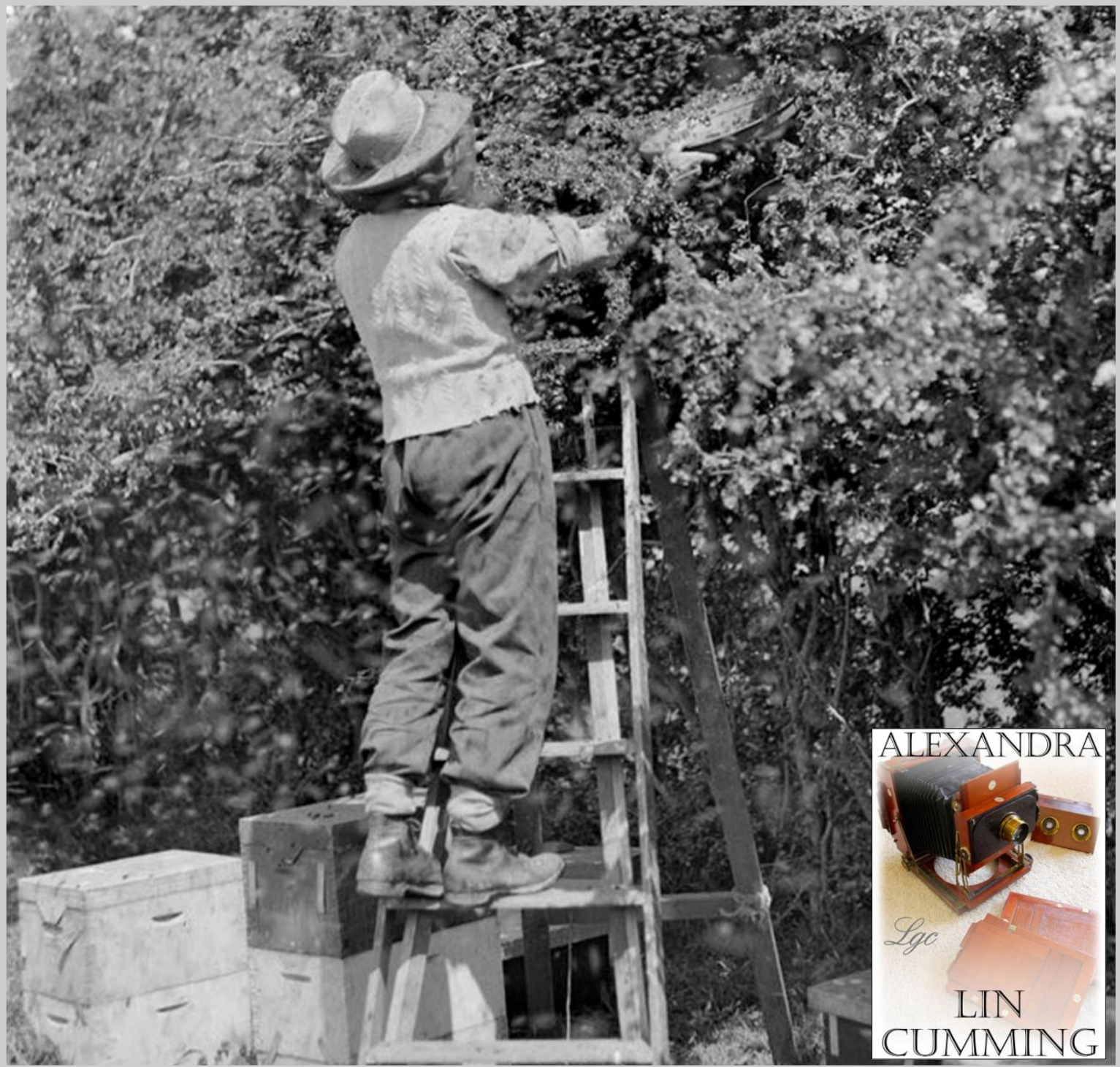
HISTORIC GALLERY

GALLERY



LIN CUMMING COLLECTION

District imagery from yesteryear!

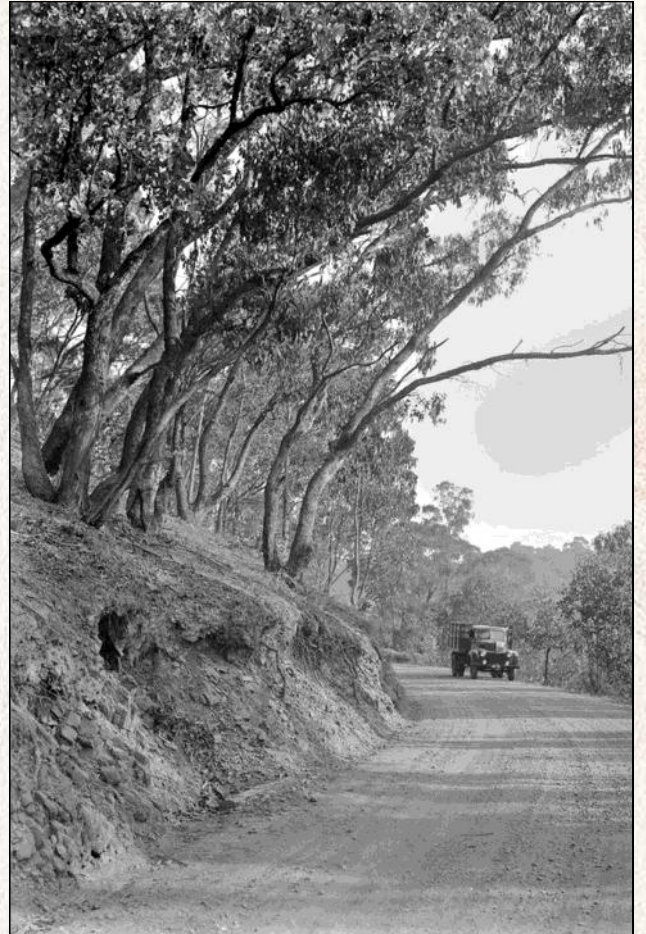


BEE SWARM RECOVERY

This photograph was taken by Alexandra based photographer Lin Cumming circa 1930 and shows the recovery of a bee swarm from a Hawthorn Hedge, using a large dish (left). The Hawthorn Hedge helped protect motorist on the adjacent road from being stung from bees through open windows.

HISTORIC GALLERY

GALLERY



LIN CUMMING COLLECTION

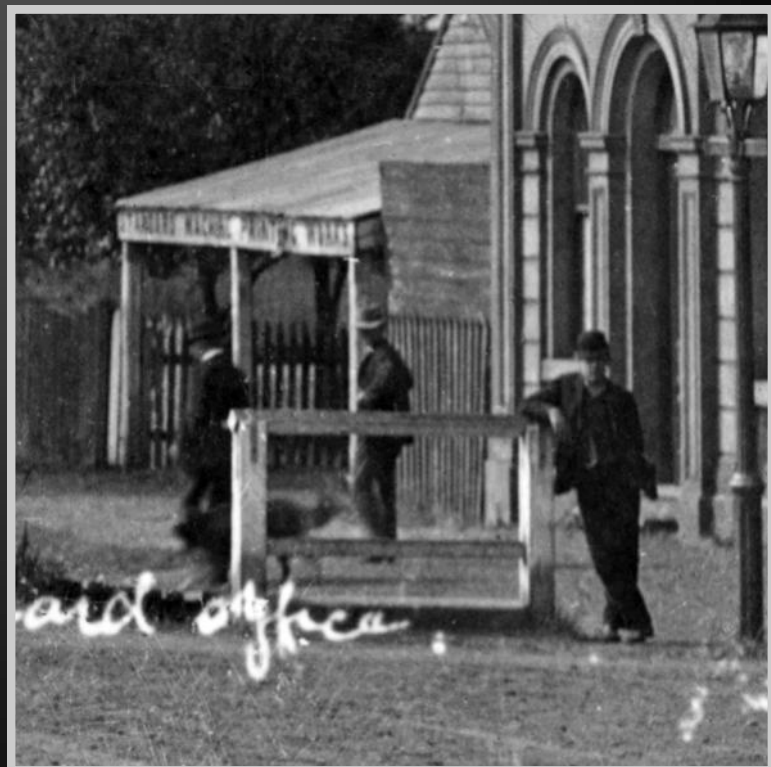
District imagery from yesteryear!



ALEXANDRA MAIN STREET

This photograph was taken by Alexandra Photographer Lin Cumming circa 1910.

The image is taken looking north along Grant Street, and shows the early wooden trestle bridge, the Alexandra Library, and the 'Alexandra Machine Printing Works' on the right. The Printing Works later became known as the 'Standard Office'. It eventually made way for a third library expansion project.



LIN CUMMING COLLECTION

District imagery from yesteryear!



GRANT STREET ALEXANDRA

The Alexandra Free Library and the Standard Machine Printing Works, located beside each other in Grant Street Alexandra and captured circa 1910.

This photo was taken well after the extension to the Alexandra Library (left section), which was built in 1891.

HISTORIC GALLERY

GALLERY



HISTORIC GALLERY

GALLERY



**Two men,
felling the large
trees.**

LIN CUMMING COLLECTION

District imagery from yesteryear!



THE ROCK CRUSHER

This image, believed to have been taken in the 1920's, is of what appears to be a steam powered rock crusher.

The man (centre) is loading rocks into the machine, one at a time, the rock is crushed, and the deposits exit the machinery on the left - at the top of the A-frame.

On the left of frame, is the back of a wagon. This may have been where the smaller rocks were loaded, for transport.

Any further information welcome.

HISTORIC GALLERY

GALLERY



LIN CUMMING COLLECTION

District imagery from yesteryear!



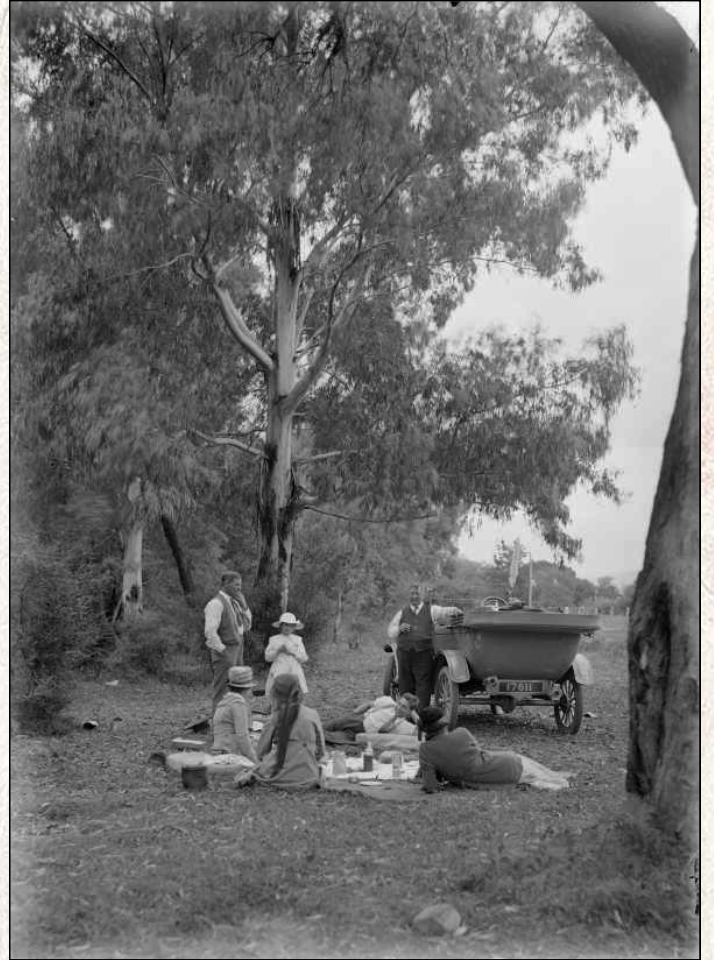
ALEXANDRA BEE HIVES

These hives were owned by Lin Cumming and were being wintered at Alexandra. The site is on the outskirts of Alexandra on the Goulburn Valley Highway as it heads to Eildon and included a tall hawthorn hedge along the road to protect the bees from cars, as well as drivers from the bees entering their open windows.

The photo was thought to have been taken in the 1960s, after Lin retired from his Ford Garage on Perkins Street, Alexandra. At his peak, Lin ran over 500 hives and was one of the States most respected and progressive beekeepers.

HISTORIC GALLERY

GALLERY



LIN CUMMING COLLECTION

District imagery from yesteryear!

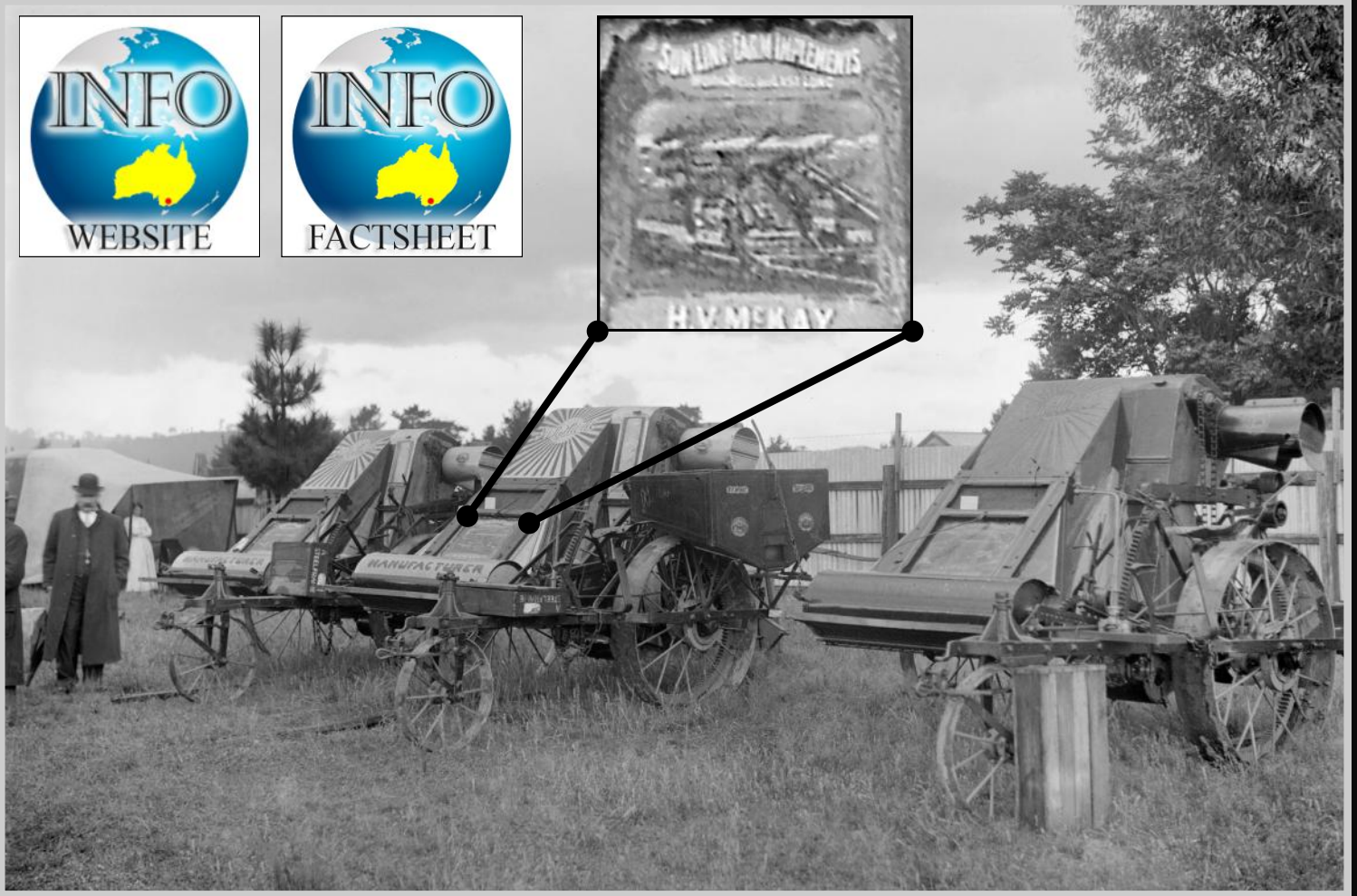


WATERFALL

The waterfall is unknown, but may be one of the many smaller falls found in the Highlands where granite boulders abound. The men in the image are out shooting, with one holding a shotgun and another wearing an ammunition belt.

LIN CUMMING COLLECTION

District imagery from yesteryear!



SUNSHINE HARVESTERS

The first H.V. McKay stripper harvester was built at Ballarat in 1884 by the McKay family and revolutionized the grain industry when introduced. It combined multiple functions into one easier process.

Hugh (H.V. McKay) was born 21st August 1865 at Drummartin, north of Bending in Victoria's Central District. He was the fifth child of twelve. He died on the 21st May 1926. This photograph was taken by Alexandra Photographer Lin Cumming, at the Alexandra Rural Agricultural Show circa 1920.

Today Sunshine Harvesters are usually found in museums, though an old rusted Sunshine Harvester can be found on the banks of the Goulburn River upstream from the Riversdale Fishing Spot at Alexandra.



Photographer: Lin Cumming
Courtesy Sandra Cumming and
State Library Victoria.



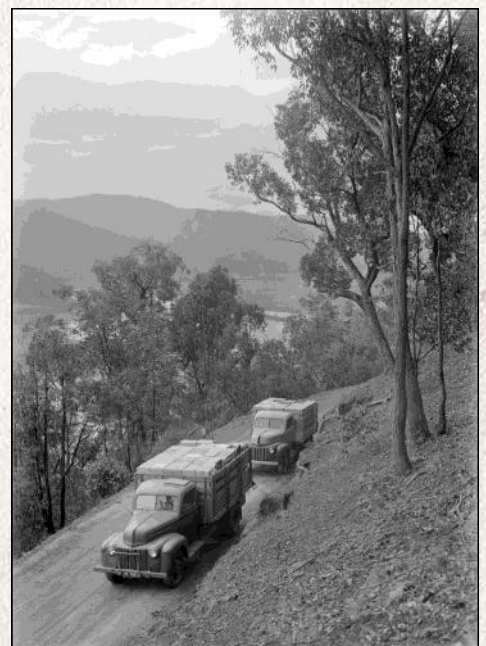
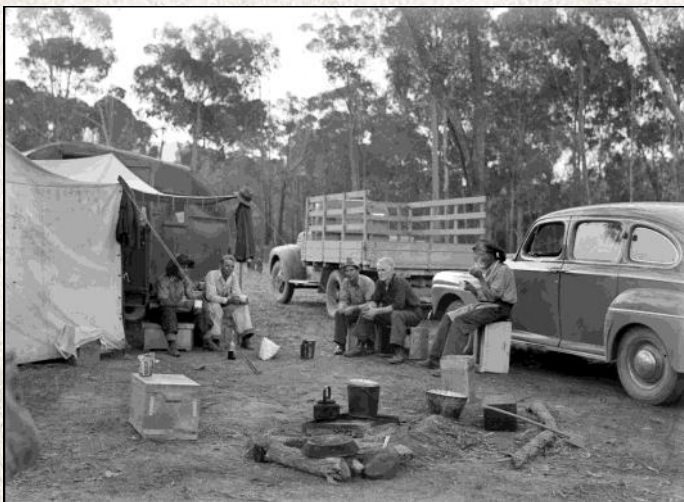
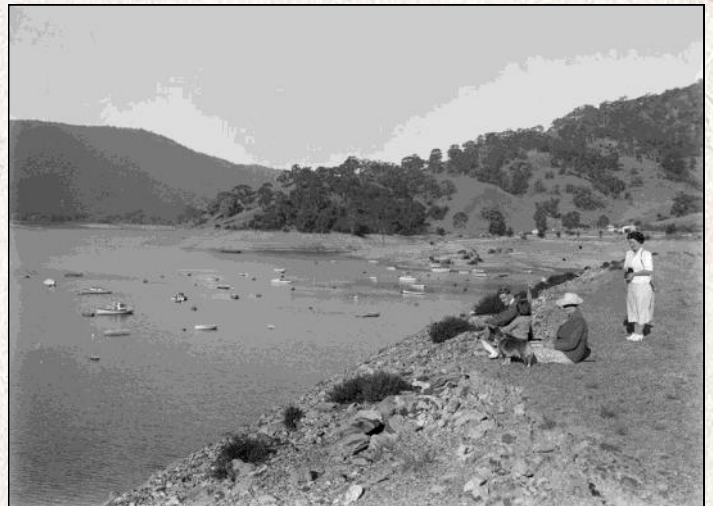
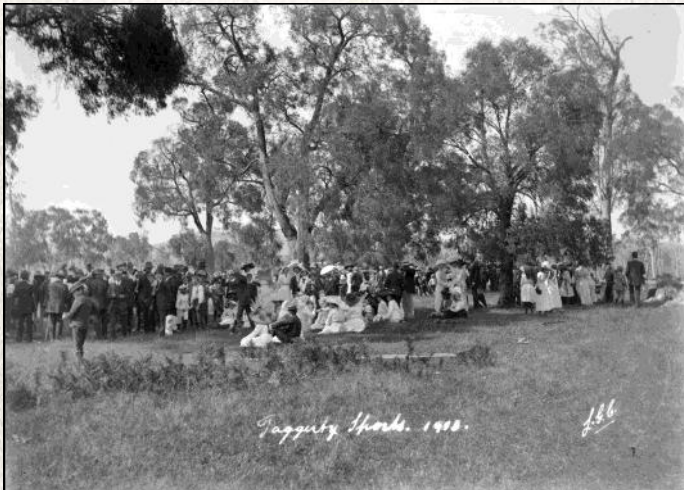
This photograph was taken circa 1930 and shows the opening of the new Alexandra Cricket Pavilion at Leckie Park circa 1950. The inset photograph on the left is Daisy Weeks who was a Shire of Alexandra Councillor and Shire President.

Can you help us identify anyone else in this photo?

Your Submissions welcome

HISTORIC GALLERY

GALLERY



LIN CUMMING COLLECTION

District imagery from yesteryear!



ALLEN'S DARLINGFORD HOTEL & POST OFFICE CIRCA 1915

The Allen's Darlingford Hotel was located at the small country township of Darlingford, submerged by the filling of the Sugarloaf Reservoir (Lake Eildon) 1927. Allen Bros took over from Timothy Kelly 1908. The Allen's family also had hotels at Thornton and Ten Mile at different times. Darlingford (previously known as 'The Junction') was originally a gold town and was named after Governor Sir Charles Darling (1809-1870). It was located at the junction of the Goulburn and the Big Rivers in Central Victoria.

The image (above) was taken by local photographer Lin Cumming circa 1915 using his wooden *Thornton-Pickard Special Ruby* glass plate camera. The camera and tripod exists today and is still in excellent condition. Download Lin's factsheet for more.



HISTORIC GALLERY

GALLERY



HISTORIC GALLERY

GALLERY



Train at Alexandra in the 1920s

Photograph courtesy Sandra Cumming 2022
Photographer Lin Cumming

LIN CUMMING COLLECTION

District imagery from yesteryear!



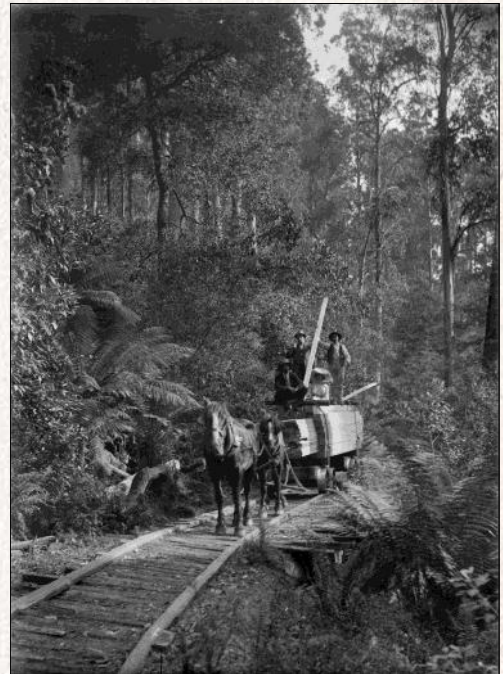
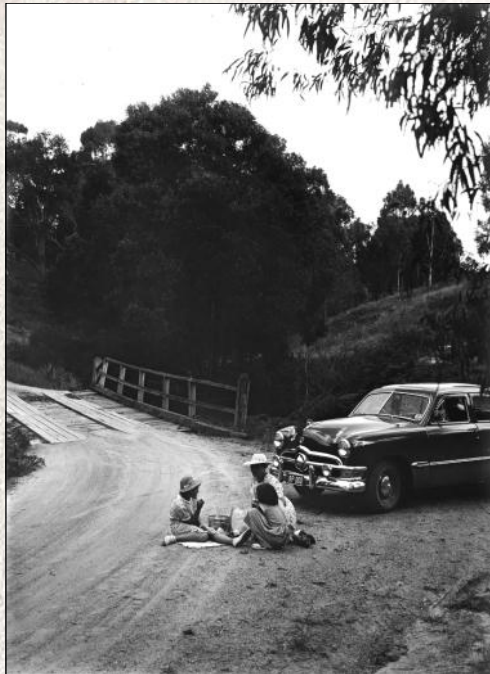
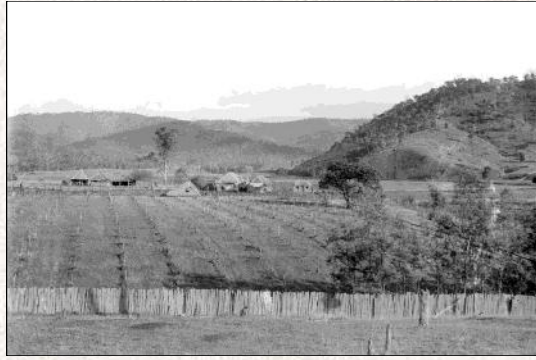
REFRESHMENTS AT RUBICON

This scene is likely a weekend adventure in the Rubicon Ranges. Photographer Lin Cumming was known for taking visitors around the district, and taking pictures of the occasions as he went. Here a group can be seen at a Rubicon timber mill taking time out for refreshments. Two dogs can be seen in the scene.



HISTORIC GALLERY

GALLERY



LIN CUMMING COLLECTION

District imagery from yesteryear!



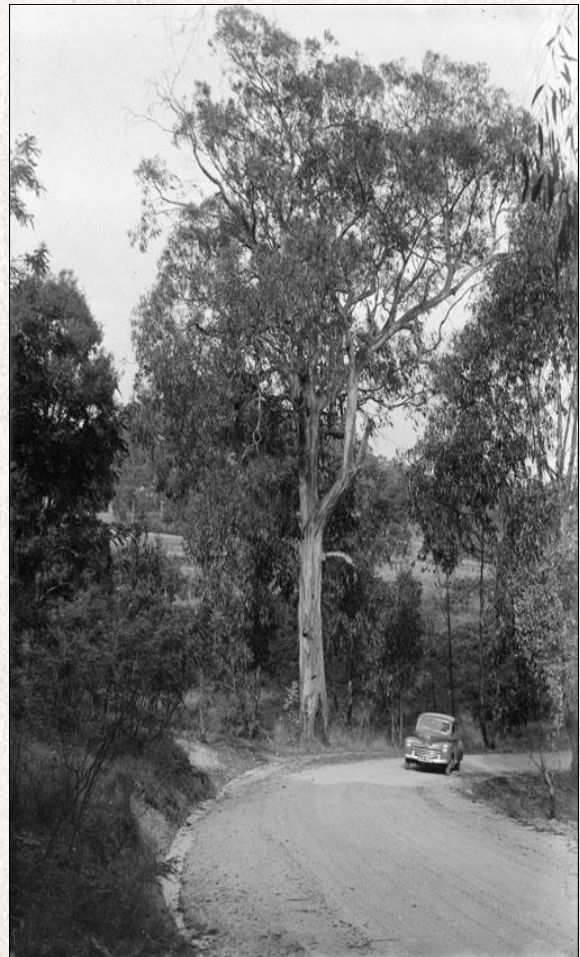
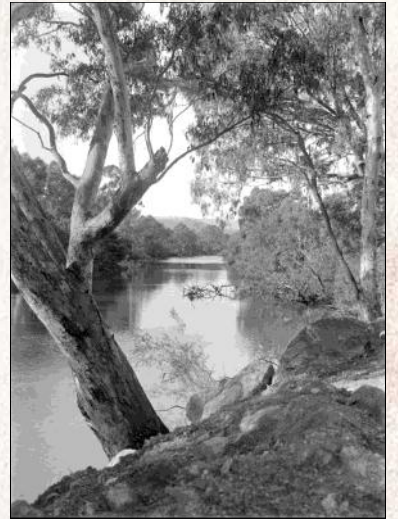
ALEXANDRA WHANREGARWEN BRIDGE

This photograph of Alexandra's Riversdale Bridge was taken by photographer Lin Cumming circa 1910. It remains one of the best surviving photos of the bridge being used by early horse drawn transport. It is not generally known that one of the earliest wooden bridges built at this location

was christened 'Whanregarwen Bridge' as a result of a municipal dispute. It was opened on 7 July 1876 by Gertrude Macrae, daughter of John Whitelaw, the first person to establish a newspaper at Alexandra. He also served as a Shire Councillor and Shire President. Read the news articles above for more.

HISTORIC GALLERY

GALLERY



LIN CUMMING COLLECTION

District imagery from yesteryear!



ENJOYING A BREAK

A group of people, take a break from the drive, for a bite to eat.

The 1920s image is a beautiful example of what country travel was like during that period.



HISTORIC GALLERY

GALLERY



LIN CUMMING COLLECTION

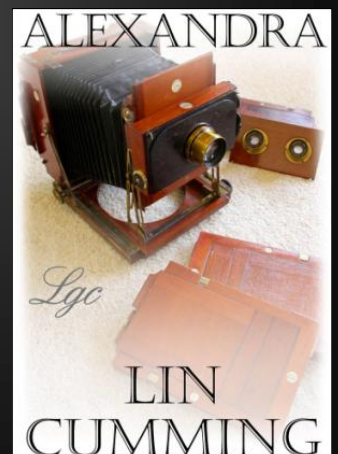
District imagery from yesteryear!



FORD CUSTOM - 1949

Margaret Cumming with daughter Sandra and her friend Wendy Craven enjoying a picnic at an bridge likely located near Snobs Creek 1949. The vehicle is a Ford 'Custom' and was produced that same year. This was the top of the line in the Ford range at that time, with a later version being the popular Ford 'Customline'.

Alexandra Ford dealer Lin Cumming sold this model and it as likely this was a showroom vehicle taken out to be photographed. Lin would have taken this image with his wooden Thornton-Pickard Special Ruby Altrincham' glass plate camera. This amazing camera and its tripod remains in the district. See the factsheet for more.



HISTORIC GALLERY

GALLERY



LIN CUMMING COLLECTION

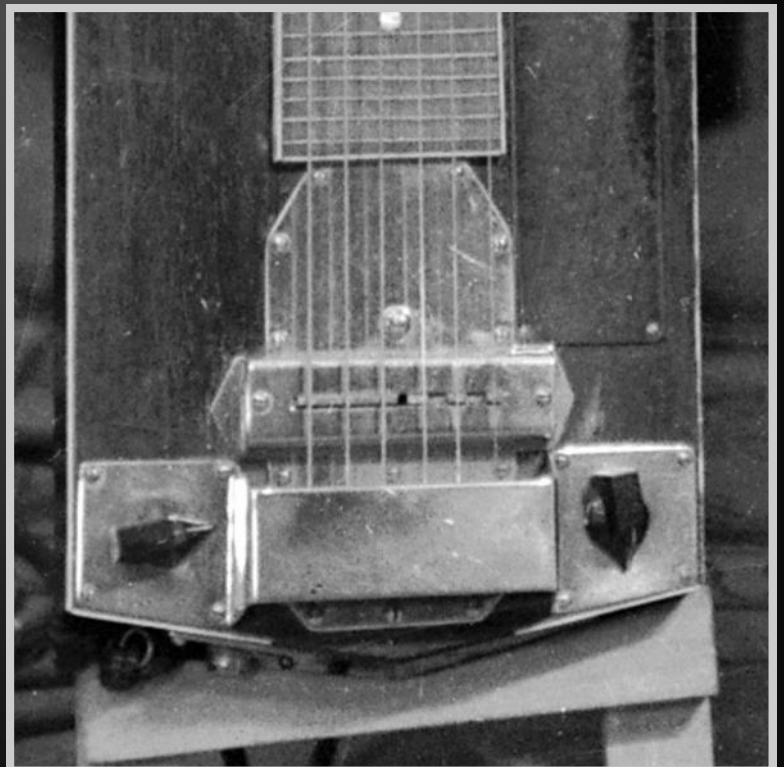
District imagery from yesteryear!



THE RHYTHM BOYS

We have no information on this photograph beyond what the image shows. Of interest is the small electric amplifier and electric guitar with two old style switches.

The photo was taken circa 1910 and was most likely taken at Alexandria.



LIN CUMMING COLLECTION

District imagery from yesteryear!



A SHORT ROADSIDE BREAK

It is always impressive when we find old photographs that depict human interactions from a by-gone era. This photograph was taken at a small bridge near Alexandra in the 1920s and is an excellent example of friendship.

The photograph was taken by accomplished Alexandra based photographer Lin Cumming, who is recognised as Alexandra's most significant early photographer for this era. Please feel free to download his factsheet (right) to enjoy more of his outstanding works.



HISTORIC GALLERY

GALLERY



LIN CUMMING COLLECTION

District imagery from yesteryear!



CHAFF CUTTER AT WORK

This farm scene near Alexandra shows hay being cut using an early chaff cutter. The hay was then bagged and carried to the store shed. You can see a man carrying away a full sealed bag (centre of image). This cutter is being powered by the early T-model Ford, which has its motor running.



HISTORIC GALLERY

GALLERY

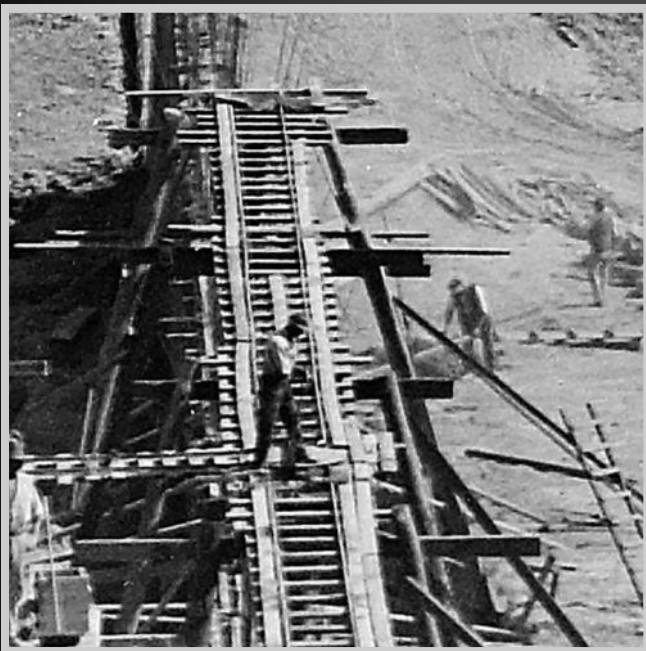


LIN CUMMING COLLECTION

District imagery from yesteryear!



SUGARLOAF DAM CONSTRUCTION



Construction of the Sugarloaf Dam commenced in 1914 and was completed in 1927. Many of the earth moving tasks were completed using horse drawn carts and steel bins on small railway style tracks.

This image taken by local Alexandra based photographer Lin Cumming shows the dam work well under way.

It is not known why the men shown in this image were gathering at the site.

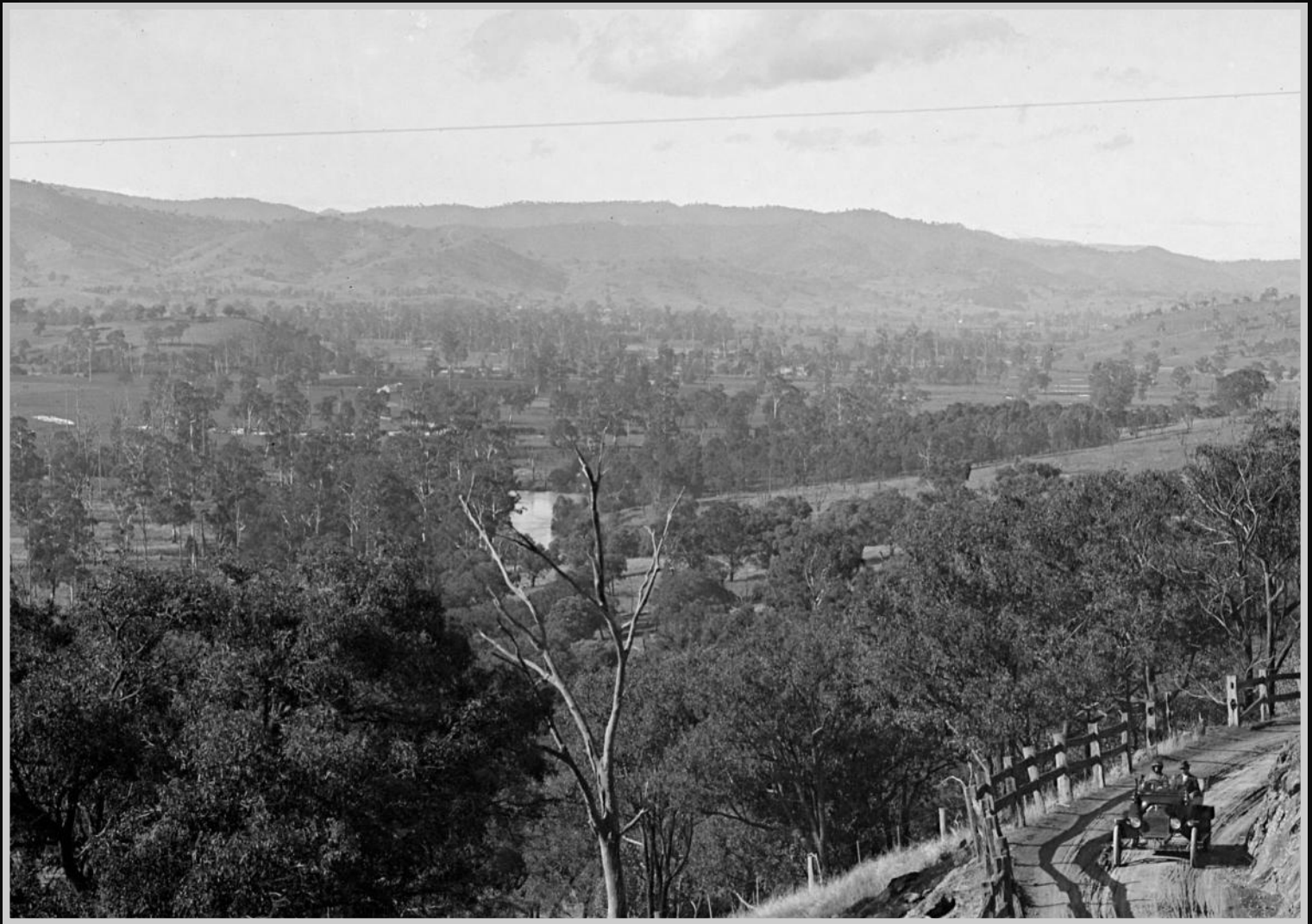
HISTORIC GALLERY

GALLERY



LIN CUMMING COLLECTION

District imagery from yesteryear!



ACHERON CUTTING

Lin Cumming was the most active and professional of all local photographers. This photo was taken on a sunny day and shows us the old Acheron Cutting alignment. An early model Ford is well placed in the image, which also shows us the road condition and the poor state of the protective boundary fencing.

LIN CUMMING COLLECTION

District imagery from yesteryear!



ALEXANDRA BAND STAND

The Historic Bandstand was built late 1913 and officially opened on Australia Day 1914. It was a small but important structure where townfolk could gather and celebrate special occasions and helped create pride in the growing township. The bandstand was built of wood with a tin roof and had eight steps leading to the top platform which had a waist high wooden guard rail.

The bandstand would have served as the performance hub for the Alexandra Brass Band and possibly even the Alexandra Fire Brigade Brass Band. Today the bandstand is just a shell sitting in the Leckie Park. The base has been removed and posts sadly extend from the dirt. Recent efforts to raise the profile of the bandstand for possible long-term restoration failed to find interest. It is hoped that this may change in the lead up to Alexandra's 150th celebrations in 2017.

HISTORIC GALLERY

GALLERY



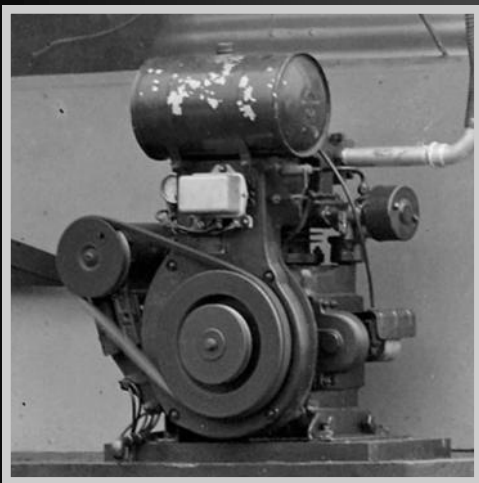
HISTORIC GALLERY

GALLERY



LIN CUMMING COLLECTION

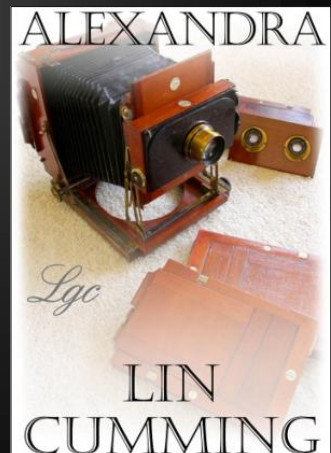
District imagery from yesteryear!



BEE KEEPING CIRCA 1945

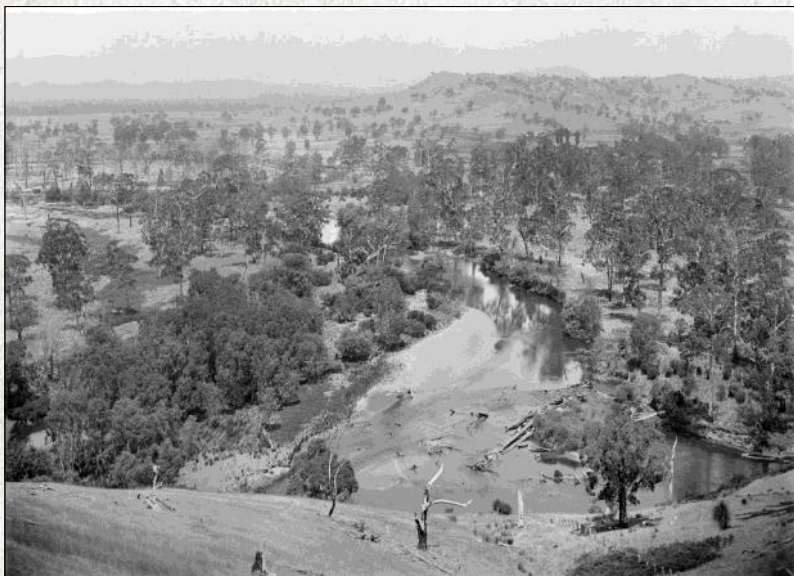
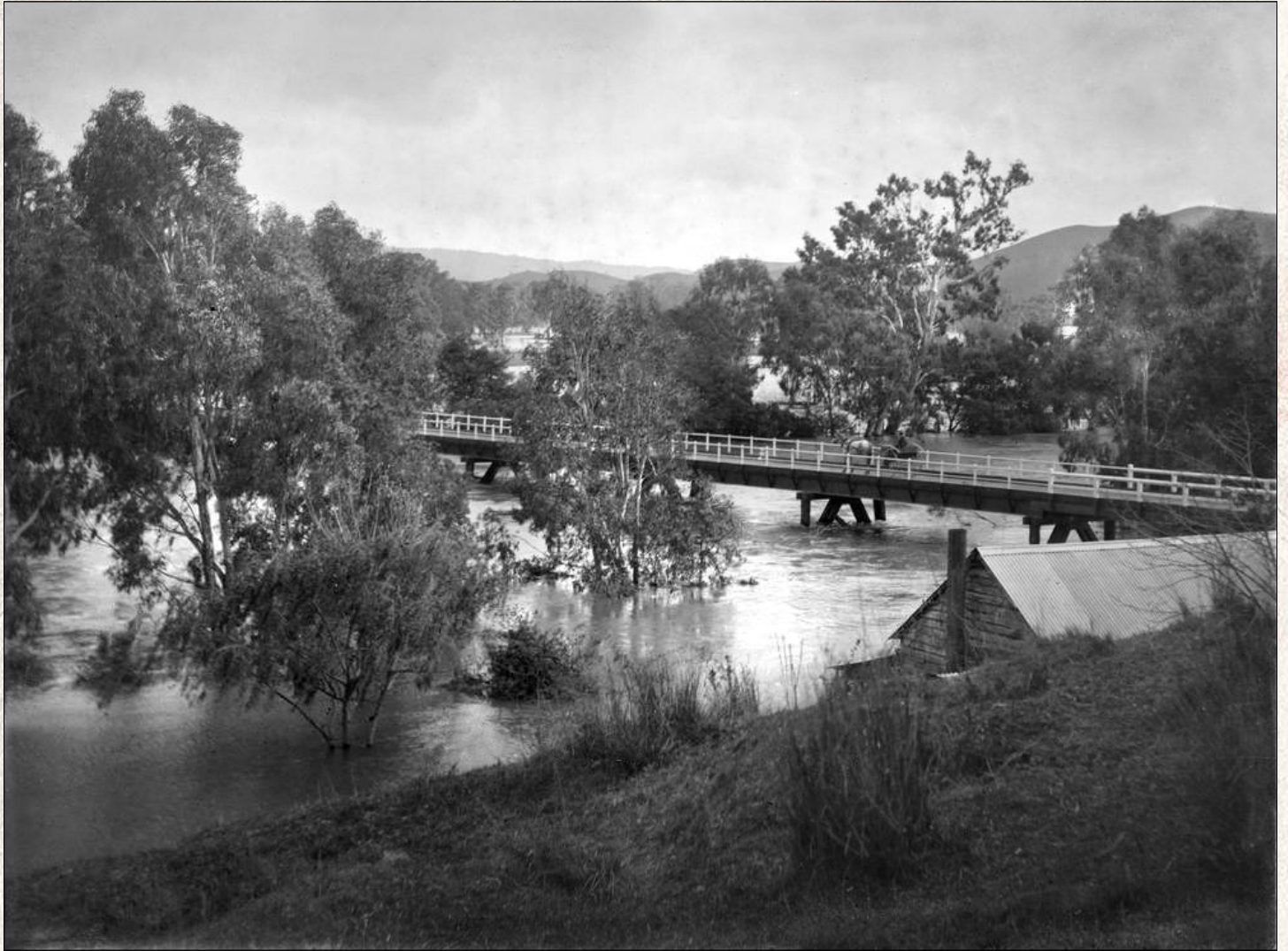
This image was taken at Alexandra and shows an unknown man wheeling full boxes of honeycomb to the mobile extracting plant for honey extraction. The well-dressed man suggests this was possibly the photoshoot for either the *Pix* or the *Sun-Herald* publications.

Bert Aldous outfitted the mobile extracting machine from an old army cooking unit, using plans from local apiarist Lin Cumming. The unit was eventually donated to the Victorian Apiarist Association in 1958. Lin's daughter Sandra was later invited to a field day to see it, but recalled how it was in a rusted and dirty state. Its current whereabouts is unknown.



HISTORIC GALLERY

GALLERY



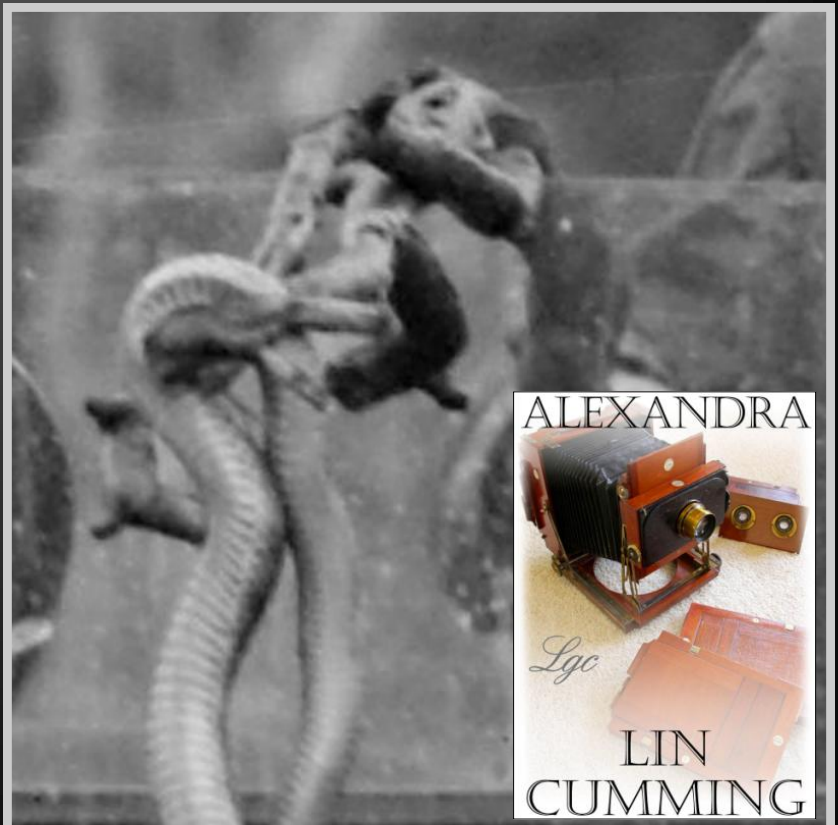
LIN CUMMING COLLECTION

District imagery from yesteryear!



CATCHING SNAKES

In this photograph we can see a lady holding a rifle while a young boy holds a stick with a dead snake wrapped around the its end. The car is pictured in flood waters, suggesting the snake was shot while swimming in the flood water and then picked up with the stick. It is possible it became the evening meal.



HISTORIC GALLERY

GALLERY



LIN CUMMING COLLECTION

District imagery from yesteryear!



A 1920's PICNIC PARTY

Lin Cumming, and a number of other local men, would often meet the train at Alexandra Station, then pick up groups and take them on picnics and outings, around our amazing district.

It is likely that this group of people is a picnic party whom had come to Alexandra on the train. The location is unknown, though is likely to be around the Alexandra area. The photographer is Lin Cumming.



HISTORIC GALLERY

GALLERY



LIN CUMMING COLLECTION

District imagery from yesteryear!



Thanks to the State Library, History has never been so easy. This image by Lin Cumming is available as a low & high resolution image straight from their site.

There are over 500 Lin Cumming images available.

www.slv.vic.gov.au

HISTORIC GALLERY

GALLERY



Merlo's Homestead in the early 1900s.

Photograph courtesy Sandra Cumming & State Library Victoria

HISTORIC GALLERY

GALLERY



Picnic party near Alexandra in the early 1900s.

Photograph courtesy Sandra Cumming & State Library Victoria

HISTORIC GALLERY

GALLERY



**A photograph of Sandra Cumming with her mother
and a friend taken near Alexandra.**

Photograph courtesy Sandra Cumming & State Library Victoria

LIN CUMMING COLLECTION

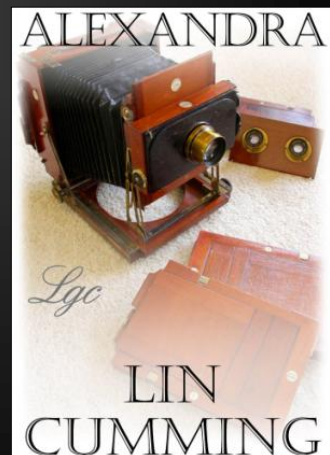
District imagery from yesteryear!



OLD ALEXANDRA ACHERON ROAD

This photograph from the Sandra Cumming Collection was taken by her father Lin Cumming of the old Alexandra Acheron Road with a flooded Goulburn River below. The current alignment of this road is higher up the hill with more substantial cuttings than the minor roadside cuttings seen here.

It is not known when this photograph was captured, but it is supposed that it may have been during the 1912 or 1916 floods or even as late as the 1934 flood event. But because it was more common for the Goulburn River to flood during the early 1900s, this image may actually be of a less major flood event such as those of 1909, 1917, 1939 or 1949.

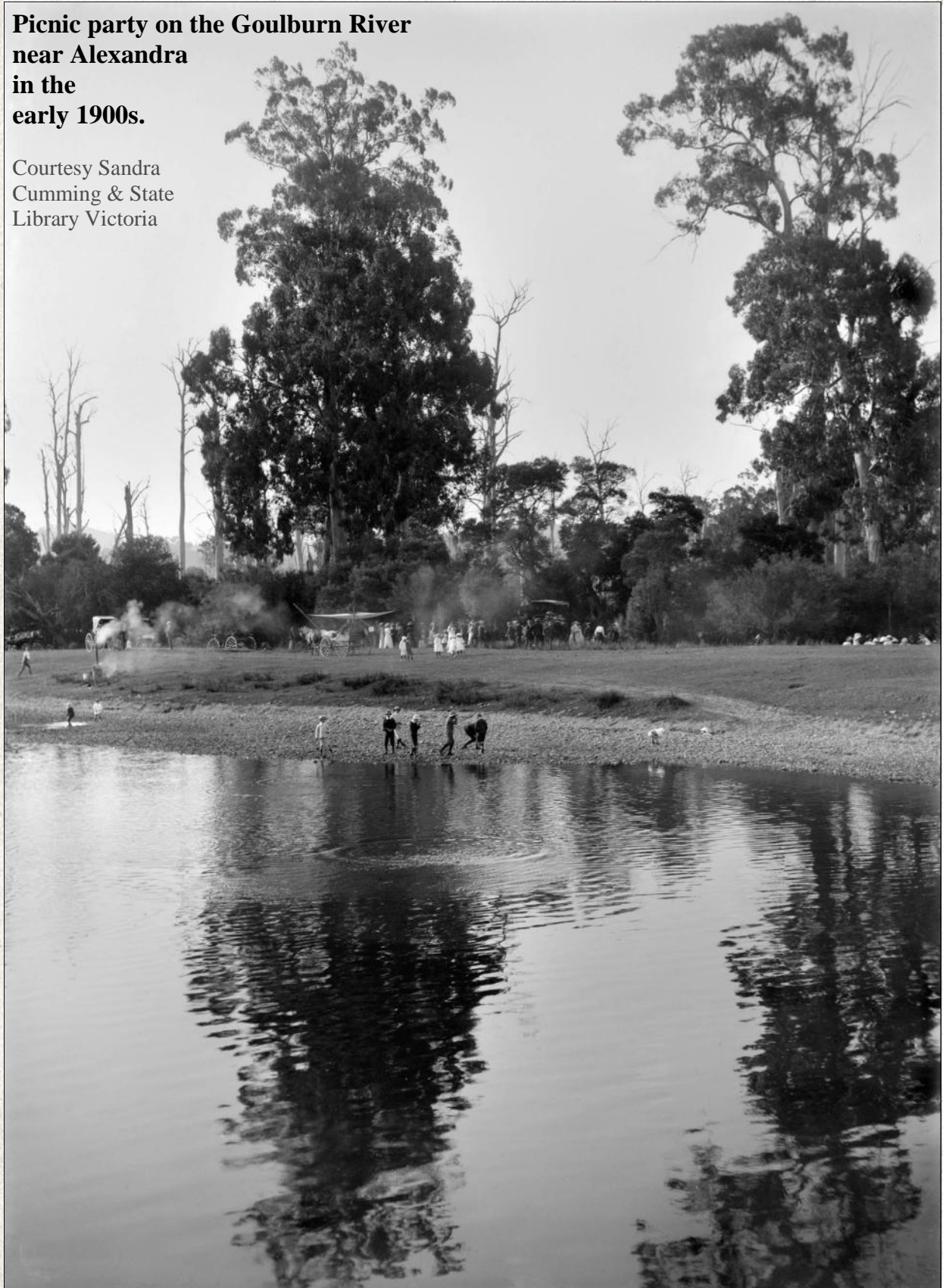


HISTORIC GALLERY

GALLERY

**Picnic party on the Goulburn River
near Alexandra
in the
early 1900s.**

Courtesy Sandra
Cumming & State
Library Victoria



LIN CUMMING COLLECTION

District imagery from yesteryear!



A WILD FOX PICTURED DURING A HUNT

This fox was pictured by Lin Cumming in the early 1900s, using the Thornton-Pickard Special Ruby wooden camera (pictured above).

Like today, foxes were vermin, and were widely hunted. This fox was subsequently shot. As seen in the Fox Stole article also featured in this eSplash, fox furs were once considered high fashion in our district.



HISTORIC GALLERY

GALLERY



A mill at the Rubicon Ranges, in the 1930s.

Courtesy Sandra Cumming & State Library Victoria 2011

LIN CUMMING COLLECTION

District imagery from yesteryear!



WATERMELON

A beautiful photograph by photographer Lin Cumming showing a group at Rubicon enjoying watermelon. Lin was one of a group of men who took visitors around the district. Visitors would travel from Melbourne on the train, meeting with their driver at the Alexandra Station, before being driven around our district.





Photographer Lin Cumming
Courtesy Sandra Cumming
& State Library Victoria



High up in the Rubicon Ranges, travellers take a welcome break. A large billy, with its lid firmly in place, is being brought to the boil over the open fire. The fire is built inside large rocks, to protect it from the wind.

Two ladies, are sitting in the early model ford, which was possibly one purchased from Alexandra Ford Dealer, Lin Cumming.

CUTTING THE CHAFF



*PHOTOGRAPHER LIN CUMMING
COURTESY SANDRA CUMMING & COURTESY STATE LIBRARY VICTORIA*

LIN CUMMING COLLECTION

District imagery from yesteryear!



LOCAL NURSE

Lin Cumming was the most active and professional of all local photographers, and his artistic range and skill is not in question. While we see a large number of his street and event scenes, we see far less of his portraiture shots, taken up close and personal. This great image is of an unknown nurse, though she may have worked at the Alexandra Hospital.



LIN CUMMING COLLECTION

District imagery from yesteryear!

LUNCHEON
VETERAN
TEA

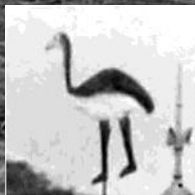
**NARBETHONG
HOUSE.**

ACCOMMODATION
FOR
TOURIST

GRAND
BEAUTY SMITH

BLACK
HOTEL

NARBETHONG
HOUSE



A kookaburra, kangaroo and emu are visible on the roof.

BRINGING HISTORY TO LIFE

BY RETURNING OUR HERITAGE BACK TO THE COMMUNITY



Skiing on the Lower Pondage circa 1960.

Photographer Lin Cumming. Courtesy Sandra Cumming.

LIN CUMMING COLLECTION

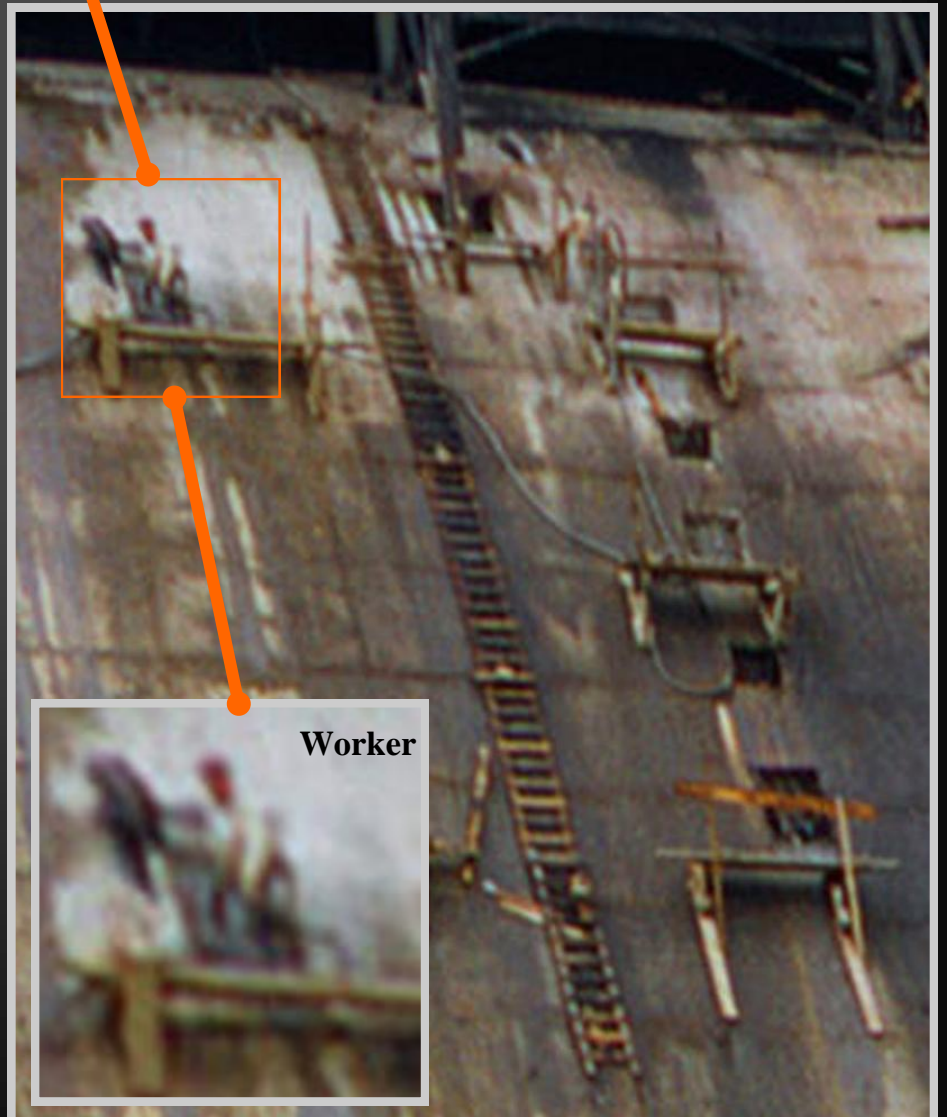
District imagery from yesteryear!



EILDON SPILLWAY CONSTRUCTION

This image of the Eildon Spillway is dated circa 1955 and shows a man working on a platform on the face of the spillway. The image was taken by Lin Cumming on his Leica slide film camera.

Lin's colour slide collection was scanned by Artworkz after Lin's daughter Sandra granted us access. It is her wish that her father's photos be visible for the local community to appreciate.



LIN CUMMING COLLECTION

District imagery from yesteryear!



HIBERNIAN AUSTRALASIAN CATHOLIC BENEFIT SOCIETY

HACBS SEYMOUR

The St Peter's Branch No. 55 of the Seymour Hibernian Australasian Catholic Benefit Society, which predated St Mary's at Seymour. This photograph was taken by past Alexandra based photographer Lin Cumming, who possibly travelled to Seymour (with his camera) on a Train from Alexandra. The photograph was taken in front of the 'Seymour Assembly Hall' in Seymour, now a building at St. Mary's College.



LIN CUMMING COLLECTION

District imagery from yesteryear!



ST MARY'S COLLEGE SEYMOUR

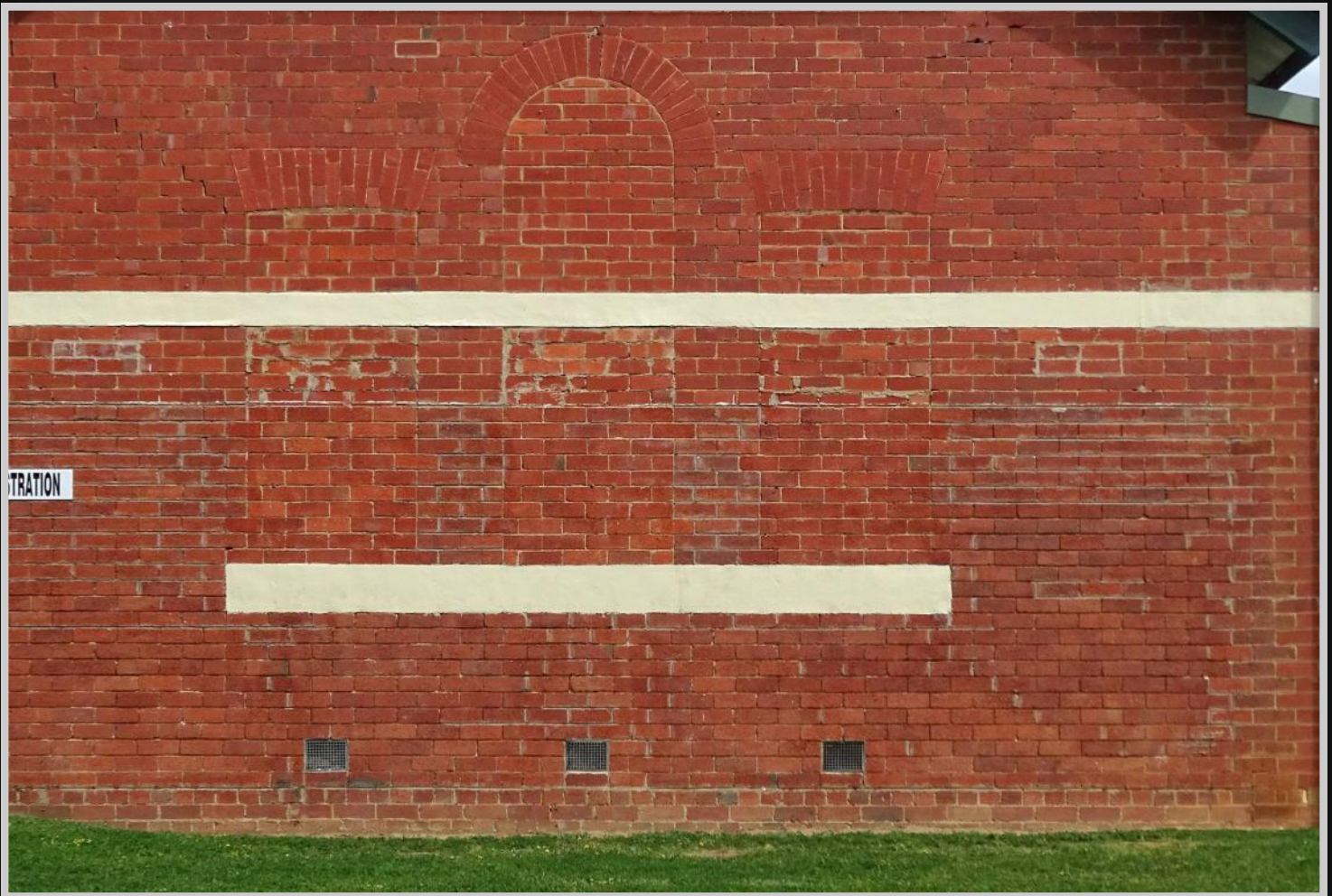
I showed the old photograph on the previous page to Artworkz researcher Allan Layton - to see if he could identify the building the men were posing in front of. We knew that it was not in Alexandra, so where could it be?

Not only did Allan discover that the old building was the former 'Seymour Assembly Hall', but he also found that the building is still standing today, is no longer used as an Assembly Hall and the building now makes up a part of the Seymour St Mary's College campus.

While the building is visible from the public street, it is hard to identify it as being the former Seymour Assembly Hall, as the three windows have since been bricked in. As the image on the next page shows, this is unquestionably the same structure as the one Lin used as a backdrop.

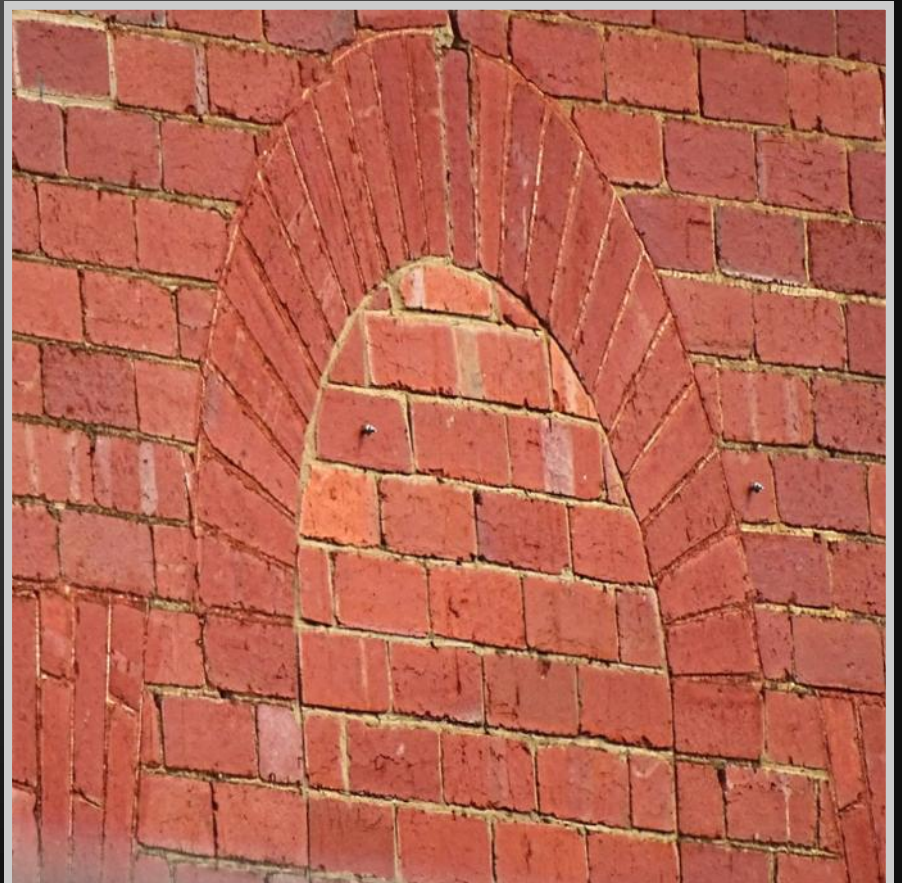
LIN CUMMING COLLECTION

District imagery from yesteryear!



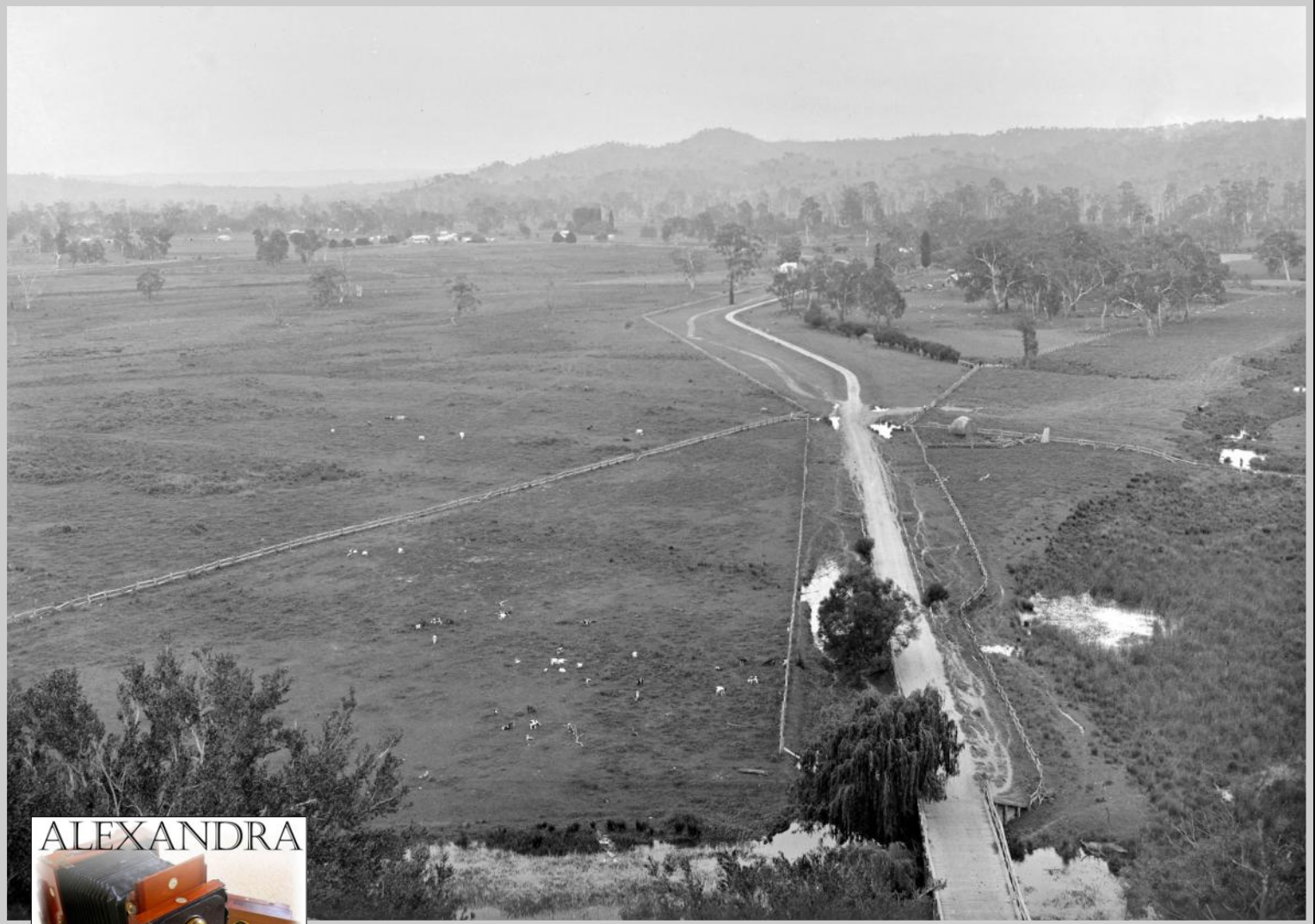
THE OLD SEYMOUR ASSEMBLY HALL

This end wall shows the windows which have been bricked in. When compared with the original image taken by Lin Cumming, you can see that the bricks are identical. This is definitely the same building.

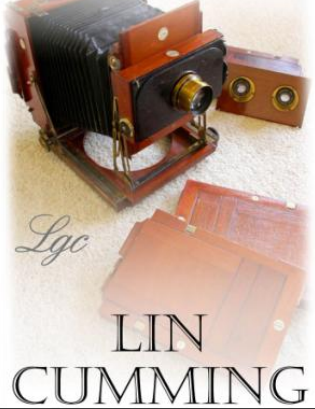


LIN CUMMING COLLECTION

District imagery from yesteryear!



ALEXANDRA



NEAR ALEXANDRA

The location of this scene, titled 'near Alexandra', had me scratching my head a little. So I asked Allan Layton for help, and after a little bit of detective work on his part, he had correctly identified the location and organised with the landowner for access to the site for an after-photo. As the position from where the photo was taken is on private property, we have chosen to not identify the site.

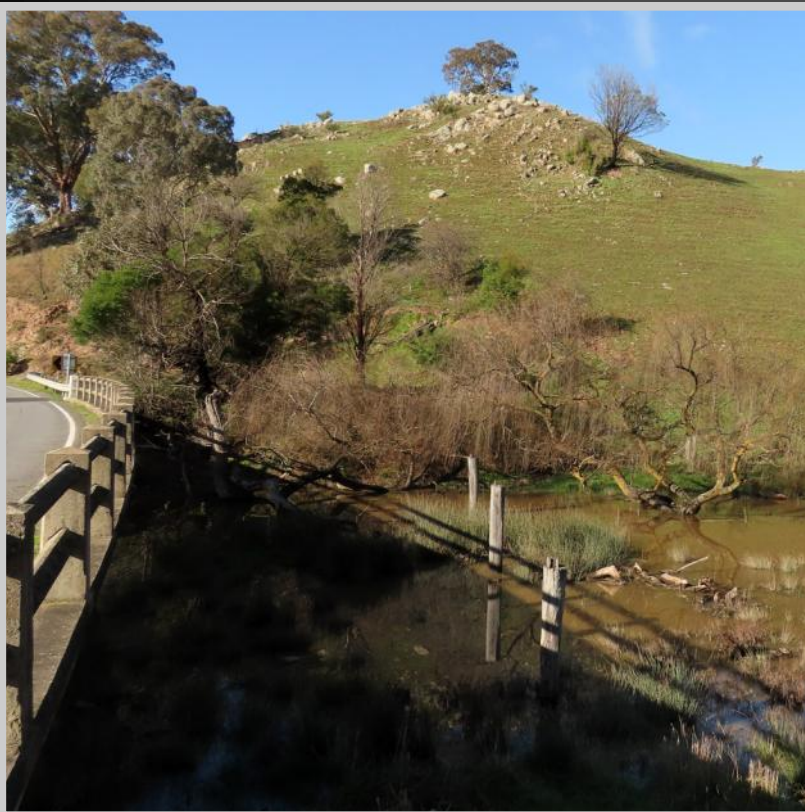
LIN CUMMING COLLECTION

District imagery from yesteryear!



NEAR ALEXANDRA

On a cool morning, and after first obtaining permission to enter private property, we headed off across the paddock. The large bull in one corner was feasting on hay so gave us no concern thankfully. In this image you can see that trees have now largely obscured the view, though you can see (left) the few remaining piles from the old straight wooden bridge shown on the previous page.





Artworkz

Serving the Community

