

A R T W O R K Z

FRASER WALKS



CANDLEBARK

PERFECT CURE

POINT COOK

POINT MIBUS

ESTATE SPUR

BLOWHARD

STONE'S HUT

GET UP GET OUT GET EXPLORING

FRASER WALKS eBook

Freely produced by Artworkz volunteers

Some of the more popular walks located at the
Fraser Block in Collier Bay, Lake Eildon National Park



This eBook, and all associated downloads, links, maps, photographs, illustrations and all information contained therein are provided in a draft form. They are produced by amateurs and rely on community input for improvement.

All maps are provided as points of reference only and must always be cross-referenced with official maps and documentation before travelling. All maps are not-to-scale.

All GPS coordinates are provided as points of reference only, and must always be cross-referenced with official maps and documentation before travelling. The supplied GPS coordinates must never be solely relied upon.

You can search this eBook using your search feature

Last updated: 17 June 2019

Artworkz, serving our community

LAKE EILDON NATIONAL PARK - FRASER BLOCK WALKS

CANDLEBARK GULLY



BACK TO THE START

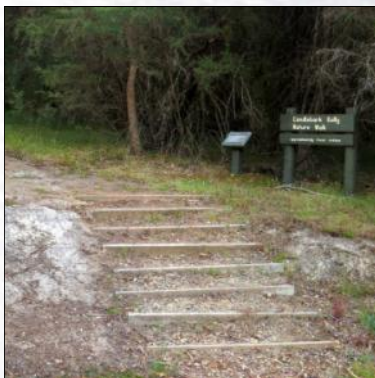
CANDLEBARK GULLY

Distance:	2 km (1 hour)
Rating:	☼☼☼☼☼
Grade:	Good
Facilities:	A seat is located along the circuit walk as well as interpretative signage
Start GPS:	S37.176306, E145.838778

The Fraser Block of Lake Eildon National Park is home to two nature walks: Candlebark Gully Nature Walk and Perfect Cure Creek Nature Walk. The Nature Walks are a great choice for those who enjoy casual and relaxing circuit walks through beautiful Victorian bush.

Birds and animals are often visible, especially during the early morning and late afternoons. Remnants of earlier mining days litter the park and are visible walker. A seat is located along the circuit walk and 16 of the 20 interpretative signs are still in place as of 2015 and offer very interesting information.

The Candlebark Nature Walk was named after a large candlebark tree that existed near the start of the walk when the park was established. This tree fell down circa 1968. The track alignment was designed by Park Ranger Ron Turner and cut in by relief labour during the establishment period of the park (then called Fraser National Park).



Park:	Fraser National Park
Managed:	Parks Victoria
Phone:	13 19 63
Web:	parkweb.vic.gov.au



BACK TO THE START

LAKE EILDON NATIONAL PARK - FRASER BLOCK WALKS

PERFECT CURE



BACK TO THE START

PERFECT CURE CREEK

Distance: 1.5 km (1 hour)
Rating: ☼☼☼☼☼
Grade: Good
Facilities: A seat is located along the circuit walk as well as interpretative signage
Start GPS: S37.169222, E145.840444

The Fraser Block of Lake Eildon National Park is home to two nature walks: Candlebark Gully Nature Walk and Perfect Cure Creek Nature Walk. The Nature Walks are a great choice for those who enjoy casual and relaxing circuit walks through beautiful Victorian bush.

Birds and animals are often visible, especially during the early morning and late afternoons. Remnants of earlier mining days litter the park and are visible to the onlookers with keen eyes. A seat is located along the circuit walk and all 18 interpretative signs are still in place and offer useful information.

The Perfect Cure Creek Nature Walk was named after early settler John Merlo who found a gold nugget in the creek. For him it was a perfect cure. The track alignment was cut in by relief labour.



Park: Fraser National Park
Managed: Parks Victoria
Phone: 13 19 63
Web: parkweb.vic.gov.au



BACK TO THE START

LAKE EILDON NATIONAL PARK - FRASER BLOCK WALKS

POINT COOK



BACK TO THE START

COOK POINT

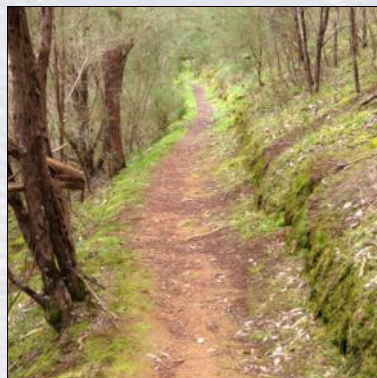
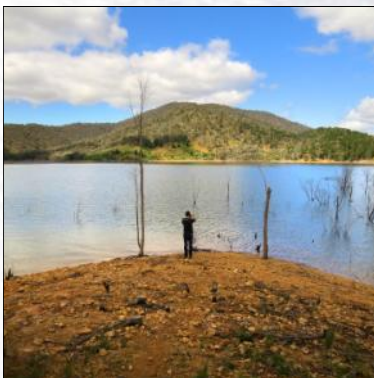
Distance: 2.5 km (40 minutes)
Rating: ☀️☀️☀️☀️☀️
Grade: Good
Facilities: There are no facilities along the walk of at Point Cook
Start GPS: S37.169083, E145.849861

The Fraser Block of Lake Eildon National Park is home to a number of walks varying in time, grade and difficulty. The walk to Cook Point is a great choice for those who enjoy walks along undulating tracks through beautiful Victorian bush.

Birds and animals are often visible, especially during the early morning and late afternoons. The area is photographic however trees do block much of the view of the lake up to the point.

The walk to Cook Point affords no clear views of the lake, however the view from Point Cook is beautiful with views along the main lake arm to the north and south. An old historic sign displaying "Fraser National Park" is visible along the pathway and the pathway itself is picturesque in places.

The track alignment was originally designed by Park Ranger Ron Turner and cut in by relief labour.



Park: Fraser National Park
Managed: Parks Victoria
Phone: 13 19 63
Web: parkweb.vic.gov.au



BACK TO THE START

LAKE EILDON NATIONAL PARK - FRASER BLOCK WALKS

POINT MIBUS



BACK TO THE START

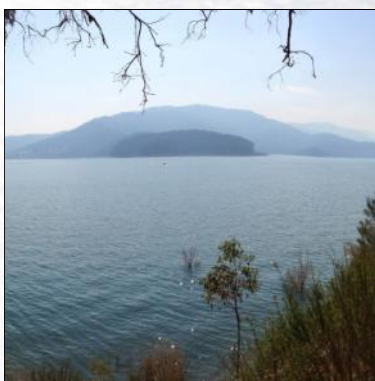
POINT MIBUS

Distance: 3 km from Lakeside Camping Area via Point Mead
Rating: ☼☼☼☼☼
Grade: Medium
Facilities: A seat is located at Point Mead. There are no facilities at Point Mibus.
Start GPS: S37.177111, E145.863000

The Fraser Block of Lake Eildon National Park is home to a number of walks varying in time, grade and difficulty. The walk to Point Mibus is a great choice for those who enjoy walks along undulating tracks through beautiful Victorian bush.

Birds and animals are often visible, especially during the early morning and late afternoons. The track can be very slippery in the wetter months. The walk to Point Mibus affords few clear views of the lake, however the views at Point Mead and Mibus from the waterline are beautiful, with views along the main lake arm to the north and south.

Point Mibus was named after State Rivers and Water Supply Minister W.J. Mibus. The track alignment to Point Mead was designed by Park Ranger Ron Turner and cut in by relief labour. The track from Point Mead to Point Mibus was aligned by Park Ranger Phil Hamer in 1990 and cut in by recruits from the Recruit School HMAS Cerberus in Victoria.



Park: Fraser National Park
Managed: Parks Victoria
Phone: 13 19 63
Web: parkweb.vic.gov.au



BACK TO THE START

LAKE EILDON NATIONAL PARK - FRASER BLOCK WALKS

ESTATE SPUR



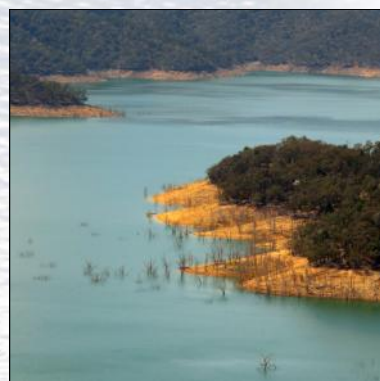
BACK TO THE START

ESTATE SPUR

Distance: 6 km circuit walk (2 hours)
Rating: ☼☼☼☼☼
Grade: Hard / steep
Facilities: There are no facilities located along the spur section of this walk
Start GPS: S37.177895, E145.863009

The Fraser Block of Lake Eildon National Park is home to a number of walks varying in time, grade and difficulty. The Estate Spur circuit walk is a great choice for those who enjoy strenuous steep walks through beautiful Victorian bush. We recommend the 6 km walk starting at Lakeside Camping area, up to the spur, along the spur to the south and down to the Parks Victoria office. Then along the shared walk/bike track to Lakeside Camping area. Birds and animals are often visible, especially during the early morning and late afternoons.

The view from Estate Spur is beautiful with vistas to the north, east and south. There are no seats along the spur, however a seat is located on the shared walk/bike path to Lakeside Camping Area. The ascent up Estate Spur affords few clear views of the lake, however spectacular views are available along the spur. It is believed that 'Estate Spur' was named after a proposed local housing estate near the park that did not go ahead. The track alignment is along pre-existing roads and the shared walk/bike path that connects the camp areas near the lakes edge.



Park: Fraser National Park
Managed: Parks Victoria
Phone: 13 19 63
Web: parkweb.vic.gov.au



BACK TO THE START

LAKE EILDON NATIONAL PARK - FRASER BLOCK WALKS

BLOWHARD SUMMIT



BACK TO THE START

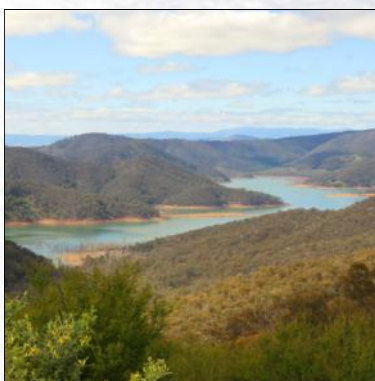
BLOWHARD SUMMIT

Distance: 6 km circuit walk (2 hours) via High Camp & Merlo Lookout
Rating: ☼☼☼☼☼
Grade: Hard / steep
Facilities: A seat is located along the circuit walk
Start GPS: S37.169222, E145.840444

The Fraser Block of Lake Eildon National Park is home to a number of walks varying in time, grade and difficulty. The walk up to Blowhard Spur is a great choice for those who enjoy strenuous steep walks through beautiful Victorian bush. We recommend starting at the Perfect Cure Creek Carpark at the start of Keg Spur Track, ascending to High Camp, then along Blowhard Spur Track to Blowhard Summit before heading down Merlo Lookout Track to Merlo Lookout and back to the carpark. Birds and animals are often visible, especially during the early morning and late afternoons.

The walk up Keg Spur Track is steep and affords few clear views of the lake. The view from High Camp has also been overtaken by trees, however spectacular views are available along different sections of Blowhard Spur Track that make this walk amazing. Blowhard Walk as the name implies was named due to the frequent windy conditions.

The track alignment is along forestry vehicle tracks.



Park: Fraser National Park
Managed: Parks Victoria
Phone: 13 19 63
Web: parkweb.vic.gov.au



BACK TO THE START

LAKE EILDON NATIONAL PARK - FRASER BLOCK WALKS

STONES OUTSTATION



BACK TO THE START

STONES OUTSTATION

Elevation: 305 m
View Rating: ☼☼☼☼☼
Site rating: ☼☼☼☼☼
Area: Lake Eildon National Park
Features: Small hut with the stockyard relics nearby
Notes: Located beside Station Creek

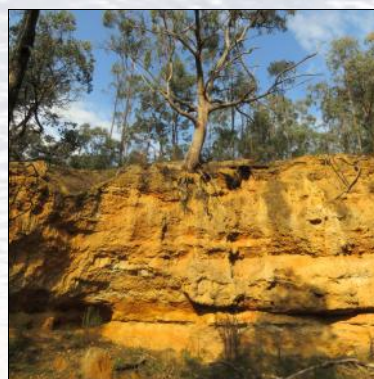
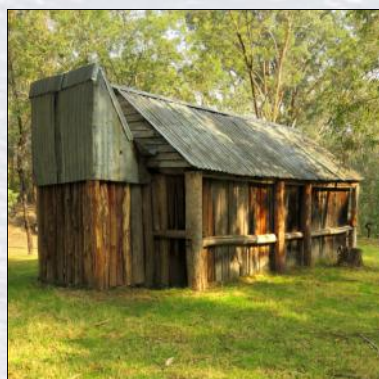
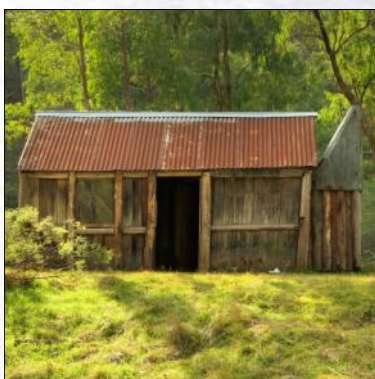


The Fraser Block of Lake Eildon National Park is home to a number of walks varying in time, grade and difficulty. The walk up to Stones Hut (Outstation) is a great choice for those who enjoy long walks through beautiful Victorian bush.

Birds and animals are often visible, especially during the early morning and late afternoons. The walking track runs parallel to the lake's shore for most of the trip and there are some great views to be had.

The hut can also be reached by foot from Skyline Road via Station Creek Track, however this track is extremely steep in places and it is of a hard grade.

Stone's Hut and Outstation was named after the Stone family who were early selectors to the area. The site also is home to the Stone's Stockyards, located 150 metres to the west of the hut.

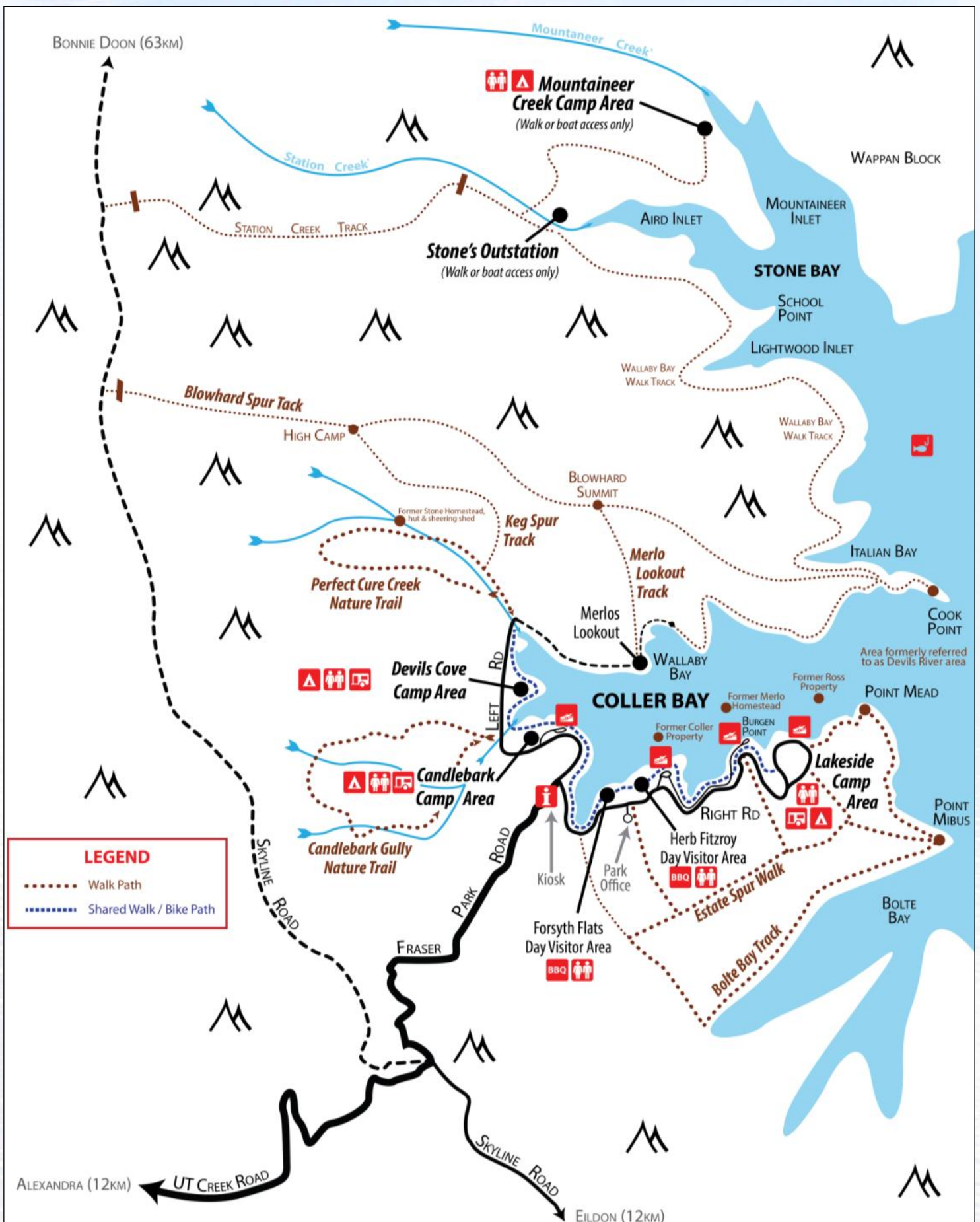


Park: Lake Eildon National Park
Managed: Parks Victoria
Partner: VHCHA, Idlers 4WD Club
Phone: 13 19 63
Web: parkweb.vic.gov.au



BACK TO THE START

MAP



HISTORIC NAMES

Auriferous

After gold bearing land.

Blowhard

Always blowing hard.

Bolte Bay

Premier Sir Henry Bolte. He had also received a Knighthood from the Queen by the time of the naming of the bay.

Estate Spur

A rumoured proposed estate for that area that did not go ahead.

Fraser

Alexander John Fraser (1892 - 1965), Minister State Development (1959 - 1964)

Keg Spur

Merlo son was carrying a keg down the spur when he put it down and it got away.

Mead

Elwood Mead (1858-1936) was an American irrigation engineer and Chairman of Victoria's State River and Water Supply Commission November 1907 - May 1914). H was involved in the construction of the Hoover Dam.

Mibus

Minister State Rivers and Water Supply Commission W.J. Mibus.

Perfect Cure Creek

John Merlo found gold here which was a perfect cure for his problems.

Point Cook

Early settler J. Cook owned the land now known as Point Cook.

School Point

Overlooks the site of a former State School, now under water.

Stone's Bay; Hut, Outstation and Stockyards

The Stone family selected land near Devils River (an old hut near Perfect Cure Creek and outstation on Station Creek at Aird Inlet). The family also owned property near Alexandra on the UT Creek Road (first property on the left after entering UT Creek Road from Alexandra).

Taylor Bay

Joe Taylor - land owner who owned lots of land to the south of the park and whose sheep often crossed into the park boundaries (up until pounded).



Artworkz
Serving the Community