

A R T W O R K Z

MARYSVILLE WALKS



**BEAUTY
SPOT**

**GILBERTS
GULLY**

**GALLIPOLI
PARK & LAKE**

**TREE FERN
GULLY**

**MICHAELDENE
TRAIL**

GET UP GET OUT GET EXPLORING

FRASER WALKS eBOOK

Freely produced by Artworkz volunteers

Some of the more popular walks
located at Marysville



This eBook, and all associated downloads, links, maps, photographs, illustrations and all information contained therein are provided in a draft form. They are produced by amateurs and rely on community input for improvement.

All maps are provided as points of reference only and must always be cross-referenced with official maps and documentation before travelling. All maps are not-to-scale.

All GPS coordinates are provided as points of reference only, and must always be cross-referenced with official maps and documentation before travelling. The supplied GPS coordinates must never be solely relied upon.

You can search this eBook using your search feature

Last updated: 17 June 2019

Artworkz, serving our community

MARYSVILLE WALKS

BEAUTY SPOT



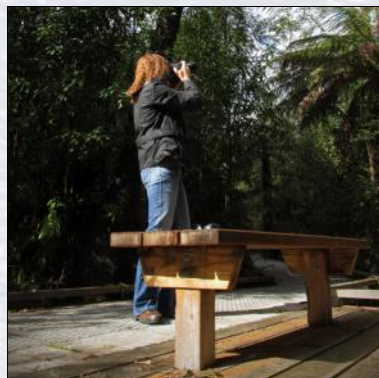
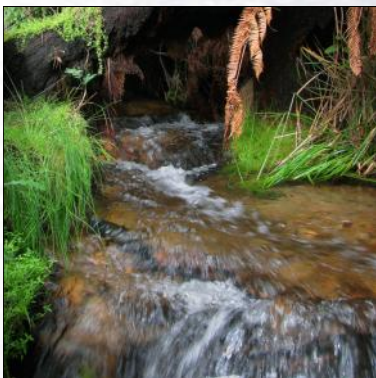
BACK TO THE START

BEAUTY SPOT

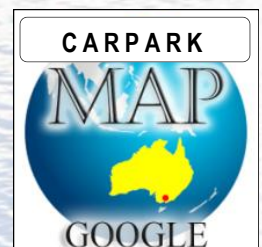
Distance: 2 km (1 hour)
Rating: ☀️☀️☀️☀️☀️
Grade: Good
Facilities: Carpark, seats, forest views, creek crossing
Trail Head: S37.514548, E145.747332



Beauty Spot was established in the early 1900s as a tourism nature walk within the boundaries of the township of Marysville. During the 2009 Black Saturday Bushfires the walk and all attractions along it, were totally destroyed. With hard work by the Department of Sustainability and Energy (DSE) after the fires, a re-designed walk was re-opening mid 2011. Today the walk is considered one of the best of its kind in the district, has a large carpark area, a picnic table, interpretative signage, pretty bridges, a well placed seat in a secluded site beside the babbling creek and excellent pathways and elevated platforms. The walk is easy grade and flora and fauna abound. Remember to take your camera. Being within the boundary of the Marysville township, it is an easy walk from the centre of Marysville as well as being close to accommodation and dining areas. It is also close to other tourism attractions in Marysville such as Gallipoli Park and Bruno's Sculpture Garden. It is also a short drive from Steavenson Falls and the many attractions along Lady Talbot Drive such as Keppel Falls, Phantom Falls and Meeting of the Waters. Always carry water with you and beware of snakes at all times.



Park: Marysville State Park
Managed: DELWP
Phone: 1800 122 969 or 13 11 86
Web: delwp.vic.gov.au



BACK TO THE START

MARYSVILLE WALKS

GILBERTS GULLY



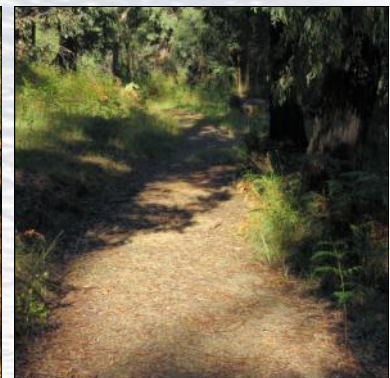
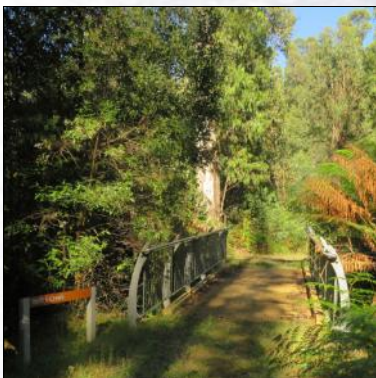
MARYSVILLE NATURE WALKS

GILBERTS GULLY

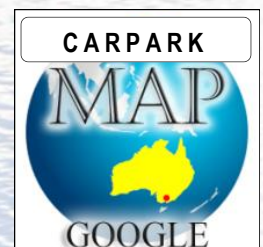
Distance: 2.2 km (30-40 minutes)
Rating: ☼☼☼☼☼
Grade: Good
Facilities: Carpark, seats, forest views, creek crossing
Trail Head: S37.514548, E145.747332



Gilberts Gully walk was destroyed by fire in the 2009 Black Saturday Bushfires, but was restored by the Department of Sustainability and Energy (DSE) after the fires, a re-designed walk was re-opened mid 2011. Today the walk is considered one of the best small walks in Marysville and compliments the Beauty Spot walk also found in Marysville. It has a small roadside carpark area, but unlike the Beauty Spot, it has no picnic table. It does however have interpretative signage, pretty bridges and a well established track. The walk is easy grade and flora and fauna abound. Remember to take your camera. Being within the boundary of the Marysville township, it is an easy walk from the centre of Marysville and is found just off Murchison Street, the main street of Marysville. It is also close to accommodation and Marysville's well regarded dining areas. Finally it is also close to other tourism attractions in Marysville such as Gallipoli Park and Bruno's Sculpture Garden. It is a short drive from Steavenson Falls and the many attractions along Lady Talbot Drive such as Keppel Falls, Phantom Falls and Meeting of the Waters. Always carry drinking water, beware of snakes and always let someone know of your travel plans.



Park: Marysville State Park
Managed: DELWP
Phone: 1800 122 969 or 13 11 86
Web: delwp.vic.gov.au



MARYSVILLE WALKS

GALLIPOLI PARK & LAKE



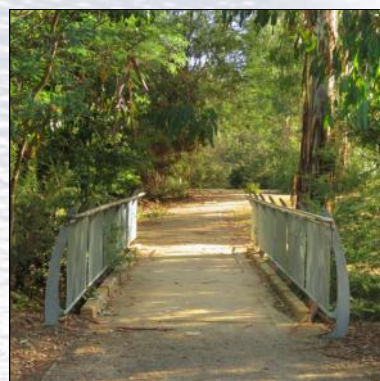
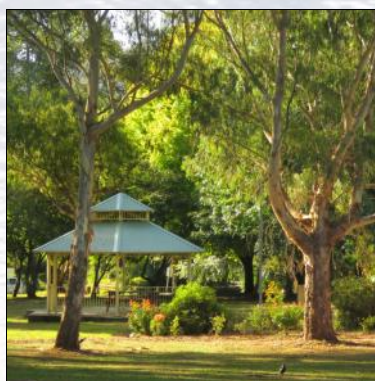
BACK TO THE START

GALLIPOLI PARK & LAKE

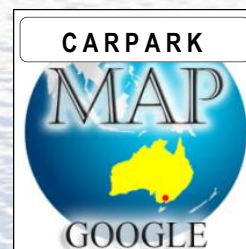
Distance: 10 - 30 minutes
Rating: ☼☼☼☼☼
Grade: Easy
Facilities: Toilet, Info Centre, picnic tables, seats, lake, jetties
Trail Head: S37.509917, E145.748139



This is a picturesque short walk though the prettiest and most feature rich park in the district. You can take 10 minutes or half an hour to walk this amazing parkland jewel. Gallipoli Park is located in Central Marysville and features the children's KIN Play Space, a Reflective Garden, Lake Gallipoli, Trevor Harrow Oval, an undercover Day Visitor Area, a flying fox, a Skate Park, historic elements, the Marysville Visitor Information Centre, interpretive signage and much more. Gallipoli Lake is stocked with fish and popular with fishermen and the area attracts casual walkers and photographers. The Steavenson River runs through the park providing a scenic backdrop as well as a place for children to wade on hot summer days. The park is bounded by Murchison Street, Falls Road and crosses the Steavenson River. The southern eight acre section of the park was once owned by local Joe White, who donated it to the township in 1922 as a memorial to his late brother Lt Colonel Alexander Henry White who died at Gallipoli on 7 August 1915. The park and township was destroyed during the 2009 Black Saturday bushfires and the redesigned park re-opened on 9 April 2011. It remains the most visited district park.



Park: Gallipoli Park
Managed: Shire of Murrindindi
Phone: 03 5772 0333
Web: www.murrindindi.vic.gov.au



BACK TO THE START

MARYSVILLE WALKS

FERN TREE GULLY



BACK TO THE START

TREE FERN GULLY

Distance: 3.4 km (1 hour)
Rating: ☼☼☼☼☼
Grade: Good (390 metre elevation gain to the Falls)
Facilities: Basic facilities & toilet at Marysville & Steavenson Falls
Trail Head: S37.510750, E145.750222



Tree Fern Gully walk was destroyed by fire in the 2009 Black Saturday Bushfires, but was restored by the Department of Sustainability and Energy (DSE) after the fires. The upgraded walk was re-opened in 2011. Today the walk is considered one of the best medium length walks in Marysville, especially as it leads to Steavenson Falls. There are no facilities along the main walk, however it starts in Marysville which has facilities, and takes you to Steavenson Falls which also has facilities, including a public toilet and seats. The walk starts at Gallipoli Park and follows the river upstream to the Falls. It is easy grade and flora and fauna are abundant along this outstanding walk. Remember to take your camera. Always carry drinking water in the hotter months, beware of snakes and always let someone know of your travel plans. This walk takes around an hour each way at a casual pace. While there are no seats along the main walk, there are numerous grassed areas where you can rest. This trail also gives access to the harder Keppel Lookout Trail which will suit the more serious hiker (see the [DELWP](#) website for more). Marysville has a wide range of eateries and a broad range of accommodation. It is also home to [Bruno's Art & Sculpture Garden](#).



Park: Marysville State Park
Managed: DELWP
Phone: 1800 122 969 or 13 11 86
Web: delwp.vic.gov.au



BACK TO THE START

MARYSVILLE WALKS

MICHAELDENE TRAIL



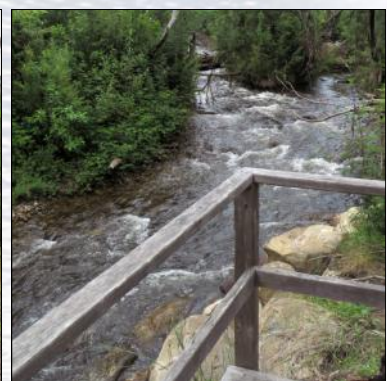
BACK TO THE START

MICHAELDENE TRAIL

Distance: 2 km (1 hour)
Rating: ☼☼☼☼☼
Grade: Good
Facilities: No facilities
Trail Head: S37.512779, E145.752827



The Michaeldene Nature Trail Walk was also known as the 'Michael Dene Walk' in the early 1900s. It was destroyed during the 2009 Black Saturday Bushfires, but was re-opened by the Department of Sustainability and Energy (DSE) in 2012, with a new wooden Timber Tramway Bridge and a viewing platform located beside the Taggerty River, called the Taggerty River Lookout. The walk begins at the bridge over the Steavenson River found near the Tennis Courts in Marysville's Gallipoli Park. It is easy grade and flora and fauna abound along the length of this splendid walk. You can also access the Michaeldene Trail from the Red Hill Trail (which begins near the entrance of the Marysville Caravan Park), at the start of Lady Talbot Drive ([S37.511226, E145.753705](#)) or from the small carpark located 500 m along Lady Talbot Drive near the Wishing Well ([S37.508722, E145.757639](#)). At Marysville you will find a range of eateries and accommodation, and other tourism attractions such as Bruno's Sculpture Garden. Always carry drinking water, beware of snakes and always let someone know of your travel plans. Click on the button (top right) to see the old wooden Timber Tramway Bridge on Google Maps.



Park: Marysville State Park
Managed: DELWP
Phone: 1800 122 969 or 13 11 86
Web: delwp.vic.gov.au



BACK TO THE START



Artworkz
Serving the Community