

MIMI JANIE



HOUSEBOAT



**HERITAGE
SERIES**

MIMI-JANE

ONE OF THE FIRST HOUSEBOATS LAUNCHED ON LAKE EILDON

CONTRIBUTORS

Eildon Information Centre
Eildon Alliance

Jean Laws
Allan Layton
David & Debbie Hibbert

CONTENTS

INTRODUCTION

TIMELINE

GALLERY

OTHER

HISTORIC FACTSHEET

EILDON'S MIMI JANE

Mimi-Jane at the Eildon Dams Museum



Believed to have been one of the first houseboats on Lake Eildon, the *Mimi-Jane* is now on display at Eildon Dams Museum located at the Eildon Information Centre.

Mrs. Louisa Jones of 'Ripponlea' in Elsternwick owned the *Mimi-Jane* and named the small water-going vessel after her two beloved poodles Mimi and Jane. The boat, built on wooden pontoons sourced from an ex-army Bailey Bridge, initially had no motor and had to be towed around by another motorised vessel. It is not currently known when the motor was fitted or by who.

Mimi-Jane was first launched on Lake Eildon in the 1950s. Mrs Jones' two daughters both had holiday homes at nearby Taylor Bay and they ha both been visiting the district for more than 30 years.

HISTORIC FACTSHEET

EILDON'S MIMI JANE

Following the death of Mrs Jones, the boat was sold to a family friend. Later, it was purchased by an unknown person wishing to launch a houseboat on the Lake.

Finally the owner considered scrapping the *Mimi-Jane*, but after consultation with the Eildon Chamber of Commerce (now Eildon Action), the vessel was gifted to the Chamber for its historical importance.

Mimi-Jane was taken off the Lake in 1984 and was kept on site at the Eildon Engineering factory at 1 Eildon Road.



In 2019 the Mimi Jane was incorporated into the new Eildon Dams Museum opened at the back of the Eildon Information Centre.



Other Museum artefacts



Other Museum artefacts

TIMELINE

BASIC TIMELINE OF EVENTS



HISTORIC FACTSHEET

TIMELINE

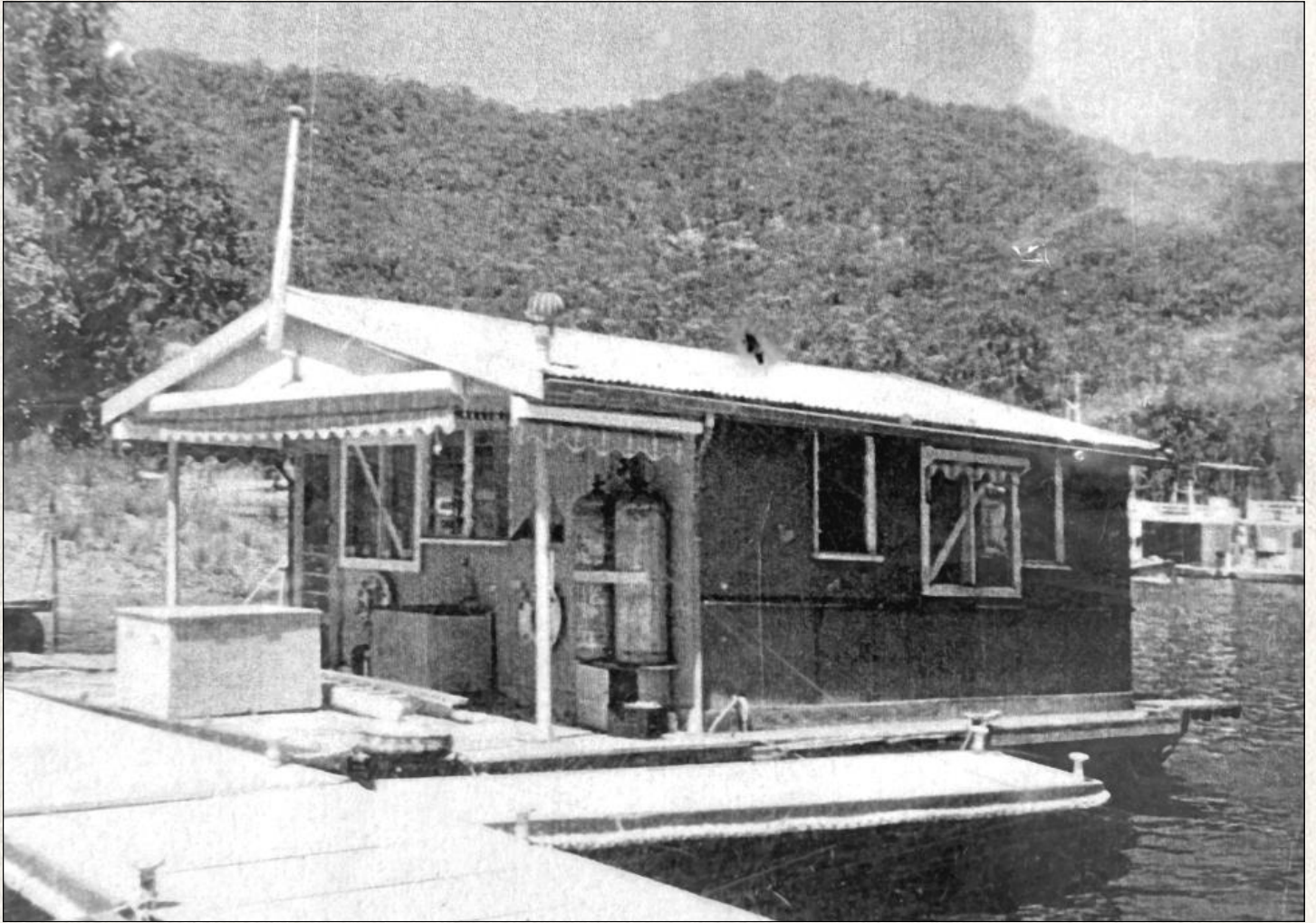
- 1950s** First launched on Lake Eildon.
- 1984** Mimi-Jane was taken off the lake.
- 2019** The Eildon Dams Museum was officially opened at the back of the Eildon Visitor Information Centre, incorporating the *Mimi-Jane*.
- 2020** Renovations to the inside and outside of the boat were commenced by Eildon Dams Museum.

GALLERY

RELATED IMAGERY

HISTORIC FACTSHEET

GALLERY



Mimi Jane
Courtesy Eildon Alliance

HISTORIC FACTSHEET

GALLERY



Mimi Jane

HISTORIC FACTSHEET

GALLERY



MIMI - JANE

Mimi Jane

HISTORIC FACTSHEET

GALLERY



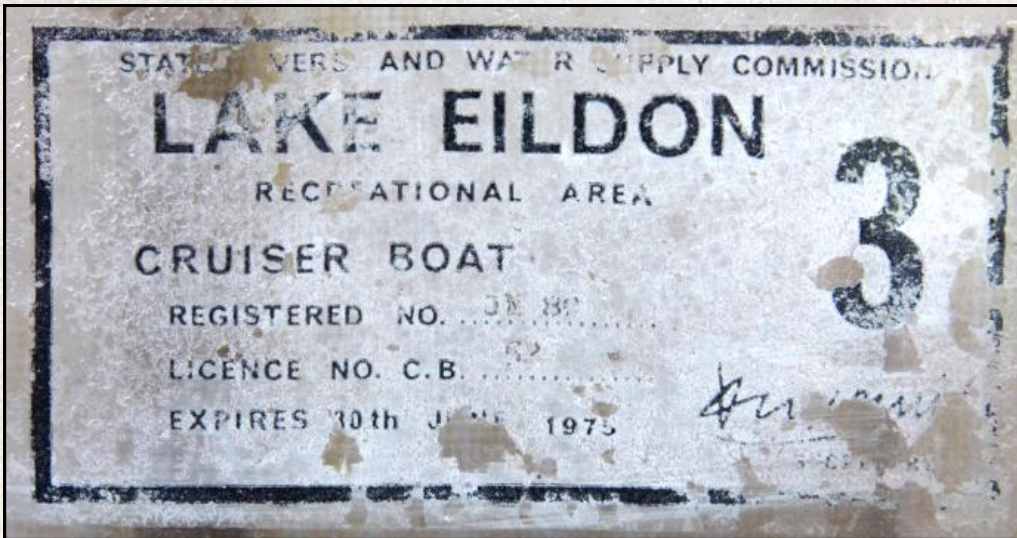
Mimi Jane

OTHER

OTHER RELATED ITEMS

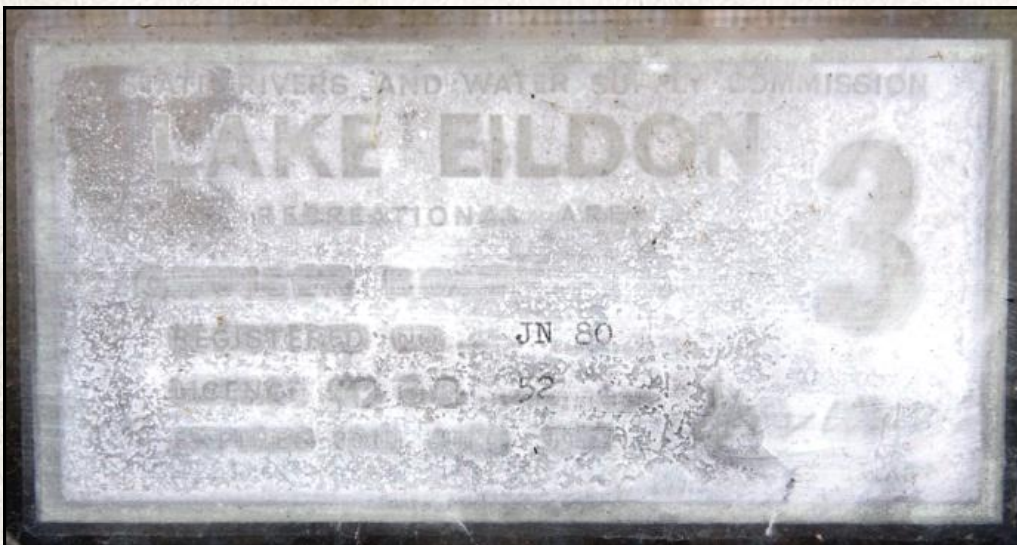
HISTORIC FACTSHEET

REGISTRATION LABELS



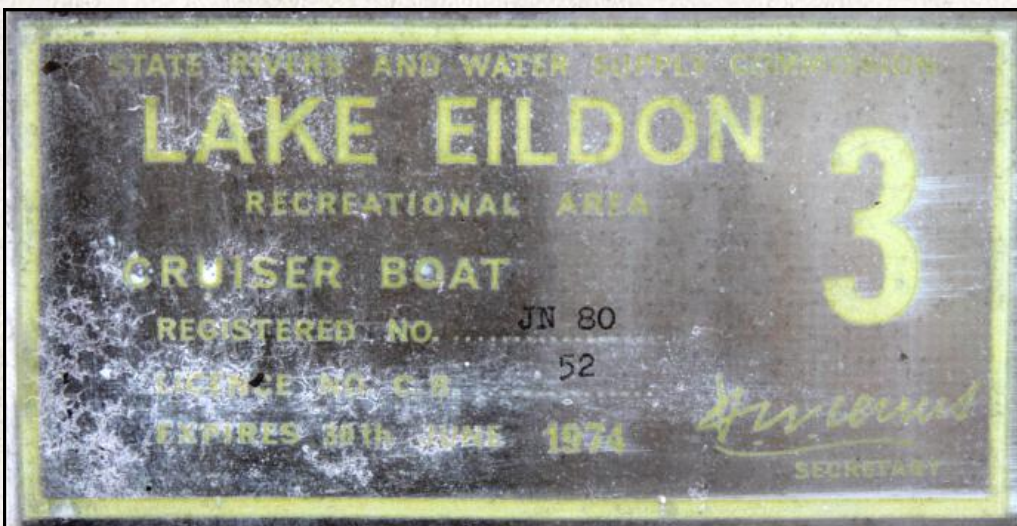
1975 Registration

Courtesy Eildon Museum
Committee 2010



1980 Registration

Courtesy Eildon Museum
Committee 2010



1980 Registration

Courtesy Eildon Museum
Committee 2010

HISTORIC FACTSHEET

REGISTRATION LABELS



HISTORIC FACTSHEET

GUIDE FOR OPERATORS

COMMONWEALTH OF AUSTRALIA
POSTMASTER-GENERAL'S DEPARTMENT

GUIDE FOR OPERATORS
of radiotelephone stations in small vessels

HANG THIS CARD NEAR YOUR RADIO EQUIPMENT

RB 198 (MAR. '67)

DISTRESS PROCEDURE
TO BE USED ONLY IF YOUR VESSEL IS IN GRAVE OR IMMINENT DANGER

TRANSMIT IN THE FOLLOWING ORDER ON THE CALLING FREQUENCY USED BY YOUR STATION

- MAYDAY MAYDAY MAYDAY;
- THIS IS Mimi-Jane VJ-2937
(Name of your vessel) (call sign)
- POSITION OF VESSEL (if possible in relation to well known landmarks)
- THE NATURE OF THE DISTRESS AND KIND OF ASSISTANCE REQUIRED;
- ANY OTHER INFORMATION TO ASSIST RESCUE.

If no answer is received repeat the Distress Call and Message particularly during "Silence" periods, if necessary on any other available frequency.

NOTE When the "distress" signal is not fully justified the "Urgency" signal PAN should be used to indicate that the ship has a very urgent message concerning the safety of the ship or a person.

OFFICIAL SEARCH AND RESCUE COMMUNICATIONS ARE CONDUCTED ON EITHER 2182 OR 6280 kc/s

SILENCE PERIODS

EXCEPT for Distress, all transmissions must **CEASE**

FOR TRANSMITTING FREQUENCIES 2182 & 6280 kc/s

For 3 minutes commencing on the hour and half hour.

FOR TRANSMITTING FREQUENCIES 2182, 1215 AND 1606 kc/s

For 3 minutes commencing on the hour.

FOR TRANSMITTING FREQUENCIES 2182, 1215 AND 1606 kc/s

For 3 minutes commencing on the half hour.

RADIO EQUIPMENT

THE SAFETY OF LIFE AND YOUR VESSEL MAY DEPEND ON YOUR RADIO - KEEP IT IN GOOD WORKING ORDER

BE SURE THAT

- Batteries are kept charged;
- The aerial is properly erected and not touching other objects;
- Lead in insulators are dry and free of salt deposits

CALLING AND TRAFFIC PROCEDURES

- Do not transmit unnecessarily;
- Keep messages brief and clear;
- Listen before transmitting and avoid interfering with other stations;
- Always use your call sign or the name of your vessel for identification - use of Christian names or Surnames is not permitted;
- Stop transmitting when requested to do so by a coast station.

When sending a radiotelegram to an Official Coast Station :-

- Write out the message before the call is made; and
- Speak distinctly, use the phonetic alphabet where necessary.

DURING SILENCE PERIODS OPERATORS SHOULD LISTEN FOR DISTRESS CALLS WHERE PRACTICABLE

Issued by Radio Branch, Engineering Works Division, Melbourne.

05/1992

0/N.C.3612/68

1967 Mimi Jane Operators Guide page 1/2
Courtesy Eildon Museum Committee 2010

HISTORIC FACTSHEET

GUIDE FOR OPERATORS

CALLING AND ANSWERING PROCEDURES

COMMUNICATING WITH OFFICIAL COAST STATIONS (O.T.C.)

Ships call and Coast Stations reply on 2182 or 6280 kc/s.

EXAMPLE :

Hello VIS; Hello VIS; This is (call sign) Calling; This is (call sign) Calling;
Radiotelegram for you; Radiotelegram for you; Over.

Hello (call sign); Hello (call sign); This is VIS; This is VIS; Go ahead with
your radiotelegram on 2760 kc/s (or 6280 kc/s); Go ahead with your radiotelegram on
2760 kc/s (or 6280 kc/s). I shall transmit on kc/s - Over.

When transmission is completed obtain acknowledgment from Coast Station.

Revert then to a listening watch on 2182 kc/s or 6280 kc/s.

NOTE : Operators participating in this service must possess a Third Class Commercial Operator's
Certificate of Proficiency.

PROFESSIONAL FISHING VESSELS

Calls and Replies are made on 4095 kc/s. Messages are exchanged with Limited Coast Stations on the
"Working" frequency (4535 or 4620 kc/s).

EXAMPLE :

VH3BS; VH3BS - This is Edina, This is Edina - Have Message for you, Have Message
for you - Over.

Edina, Edina - This is VH3BS, This is VH3BS - Pass your Message on 4535 kc/s
(or 4620 kc/s), Pass your Message on 4535 kc/s (or 4620 kc/s) - Over.

VH3BS - This is Edina - Message - Over.

Edina - This is VH3BS - Message received - Over.

(Both Stations then revert to a listening watch on 4095 kc/s).

When working with other ships 4095 kc/s is used for the call, reply and message.

PLEASURE CRAFT

When calling and answering other pleasure craft on 2524 or 2284 kc/s.

EXAMPLE :

Hello Atlas; Hello Atlas; This is Zebra Calling; This is Zebra Calling - Over.

Hello Zebra; Hello Zebra; This is Atlas Answering; This is Atlas Answering -
Go Ahead - Over.

ON HEARING A DISTRESS CALL

- (a) Allow a short interval to enable land stations or nearer vessels to acknowledge the call;
- (b) if not acknowledged answer the call and retransmit it to the nearest Coast Station or any
other Authority which may be able to arrange assistance.

HISTORIC FACTSHEET

GUIDE FOR OPERATORS

COMMONWEALTH OF AUSTRALIA
POSTMASTER-GENERAL'S DEPARTMENT
HANG THIS CARD NEAR YOUR RADIO EQUIPMENT
REB 196 (MAR.'67)

GUIDE FOR OPERATORS

of radiotelephone stations in small vessels

DISTRESS PROCEDURE

TO BE USED ONLY IF YOUR VESSEL IS IN GRAVE OR IMMINENT DANGER

TRANSMIT IN THE FOLLOWING ORDER ON THE CALLING FREQUENCY USED BY YOUR STATION

- MAYDAY MAYDAY MAYDAY;
- THIS IS Mimi Jane (Name of your vessel) 2524 (call sign)
- POSITION OF VESSEL (if possible in relation to well known landmarks)
- THE NATURE OF THE DISTRESS AND KIND OF ASSISTANCE REQUIRED;
- ANY OTHER INFORMATION TO ASSIST RESCUE.

If no answer is received repeat the Distress Call and Message particularly during "Silence" periods, if necessary on any other available frequency.

NOTE: When the "distress" signal is not fully justified the "Urgency" signal PAN should be used to indicate that the ship has a very urgent message concerning the safety of the ship or a person.

OFFICIAL SEARCH AND RESCUE COMMUNICATIONS ARE CONDUCTED ON EITHER 2182 OR 6280 kc/s

SILENCE PERIODS

EXCEPT for Distress, all transmissions must **CEASE**

FOR TRANSMITTING FREQUENCIES 2182 6280 kc/s

FOR TRANSMITTING FREQUENCIES 2524, 2284 4095 kc/s

FOR TRANSMITTING FREQUENCIES 2182 6280 kc/s

RADIO EQUIPMENT

THE SAFETY OF LIFE AND YOUR VESSEL MAY DEPEND ON YOUR RADIO — KEEP IT IN GOOD WORKING ORDER

BE SURE THAT

- Batteries are kept charged;
- The aerial is properly erected and not touching other objects;
- Lead in insulators are dry and free of salt deposits

CALLING AND TRAFFIC PROCEDURES

- Do not transmit unnecessarily;
- Keep messages brief and clear;
- Listen before transmitting and avoid interfering with other stations;
- Always use your call sign or the name of your vessel for identification — use of Christian names or Surnames is not permitted;
- Stop transmitting when requested to do so by a coast station.

When sending a radiotelegram to an Official Coast Station :-

- (a) Write out the message before the call is made; and
- (b) Speak distinctly, use the phonetic alphabet where necessary.

ACTION WHEN A DISTRESS CALL IS HEARD
CALLING AND ANSWERING PROCEDURES (SEE BACK)

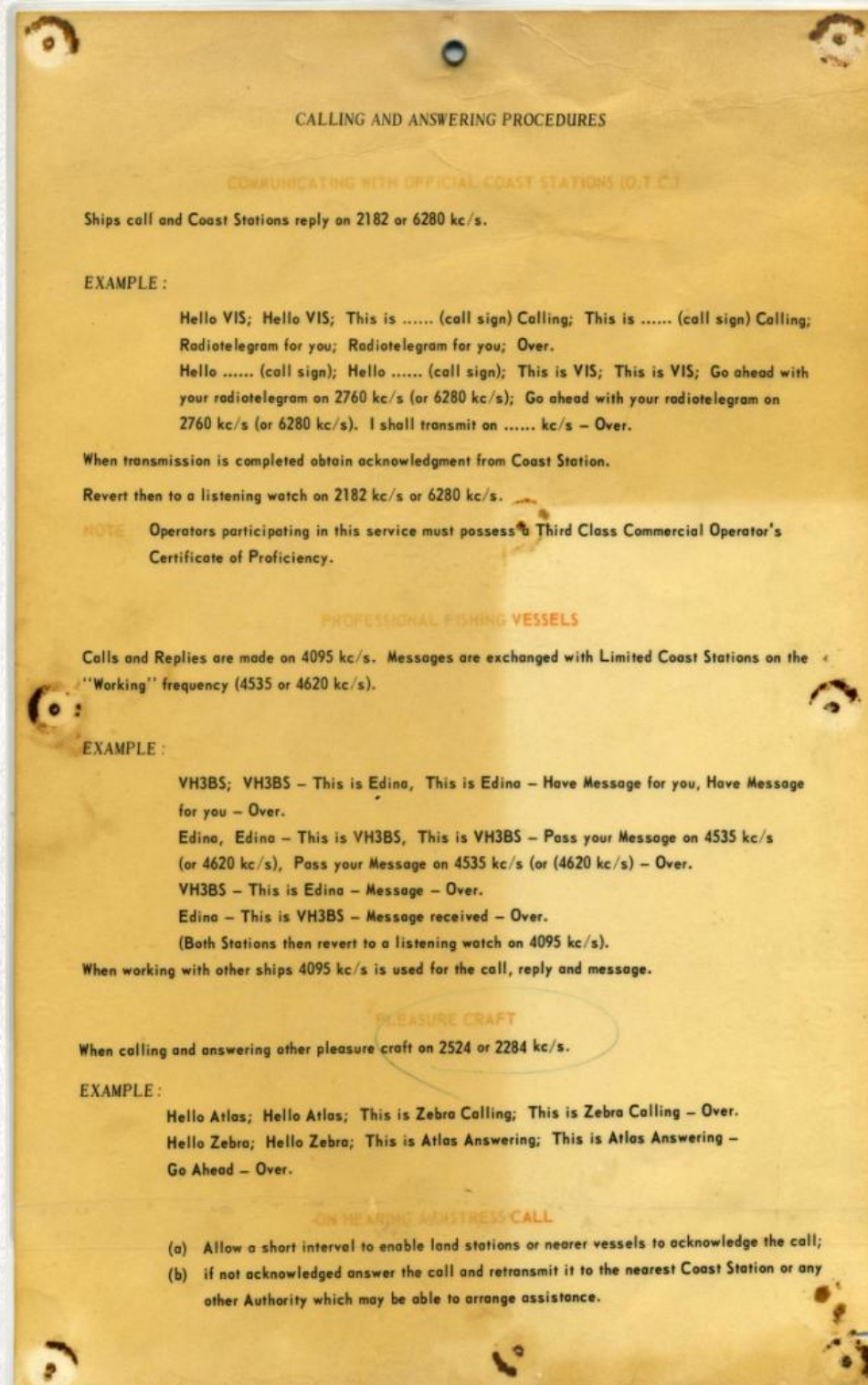
Issued by Radio Branch, Engineering Works Division, Melbourne.

DURING SILENCE PERIODS OPERATORS SHOULD LISTEN FOR DISTRESS CALLS WHERE PRACTICABLE

08.1502 0/n c.3812/69

HISTORIC FACTSHEET

GUIDE FOR OPERATORS



1967 Mimi Jane Operators Guide page 2/2
Courtesy Eildon Museum Committee 2010



Artworkz

Serving the community