

MARYSVILLE KEPPEL



FALLS



**NATURE
SERIES**

KEPPEL FALLS

CONTRIBUTORS

State Library Victoria
Parks Victoria

Lawrence Hood
Allan Layton
Leisa Lees
Kathie Maynes
John & Maureen Norbury
Kelly Petersen
David & Debbie Hibbert

CONTENTS

INTRODUCTION

TIMELINE

GALLERY

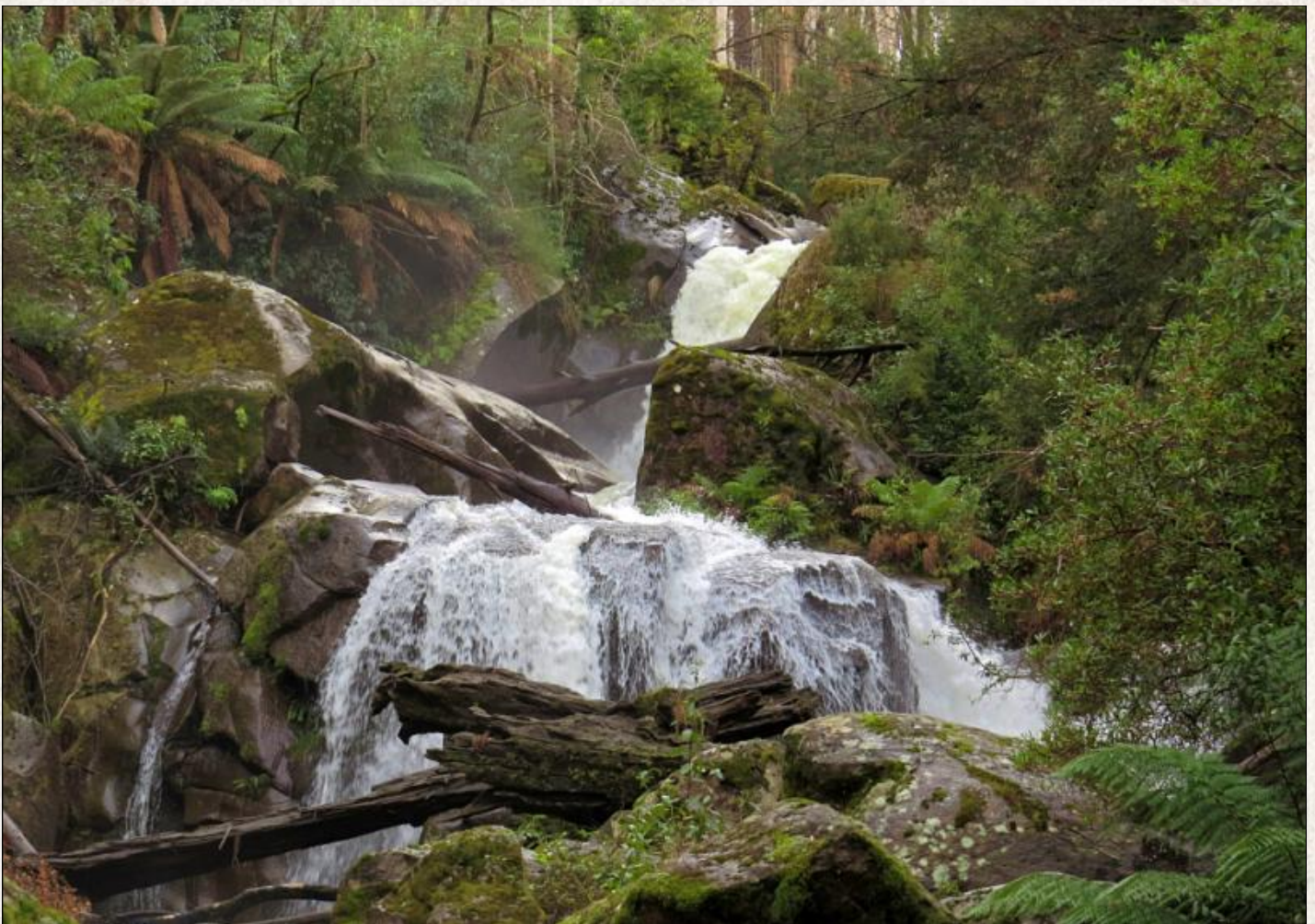
ESPLASH

HISTORIC FACTSHEET

INTRODUCTION

Name: Keppel Falls
Location: Marysville
Type: Large Cascade
Drop: 24 metres
GPS: S37.502296, E145.832196

Keppel Falls is located on the Upper Taggerty River and was discovered by John Keppel just prior to 1910. Lady Talbot Drive was then extended to make it accessible to tourists.



Keppel Falls is a large waterfall complex on the upper reaches of the Taggerty River, named after the pioneer Keppel Family of Marysville. John Keppel discovered the Falls just prior to January 1910 according to an article in *Table Talk*, published on 13 January 1910. It was also reported in *The Age* on *25 November 1910* that 'only recently' a new waterfall on the upper reaches of the Taggerty River had been recently discovered. Thea article also mentions that Sir Reginald Talbot officially opened Lady Talbot Drive a few years ago and how Lady Talbot Drive had now been extended to the falls to open it up for tourists.

HISTORIC FACTSHEET

INTRODUCTION

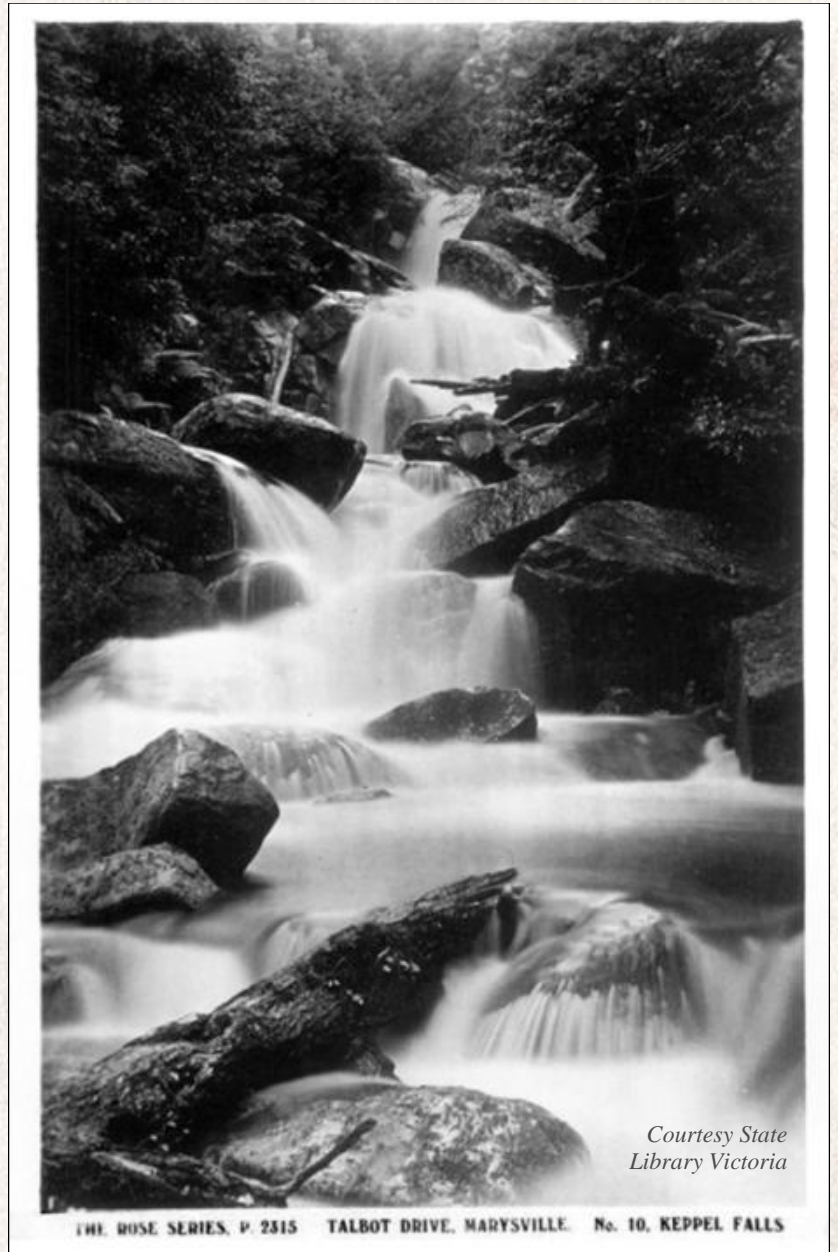
It is one of the prettier waterfalls in the District. Although referenced as a waterfall, it is more like a cascade with water rolling over large granite boulders, feeding the Taggerty River below. These Falls are magnificent after rain, though are still excellent in the drier months of the year.

The walking track is easy grade and follows the Taggerty river. There are some very pretty spots along the track which passes through pristine Australian bush.

The walking track is easy grade and follows the Taggerty River as it winds around the hills for around 1.2 km before it delivers you to the Falls. The platform extends partially out over the lower part of the Falls. The platform offers a good view of the upper falls.

Other attractions to share the Keppel name include: Keppel Hut and Keppel Lookout. The historic Keppel Hotel, which originally stood on the site of the more modern Cumberland Resort and Day Spa, was destroyed during the 2009 Black Saturday Bushfires.

Caution should always be taken in the Victorian Bush. Ensure you have correct footwear and clothing as conditions can change quickly. It is worth taking water and small snacks on this trip and always let someone know of your travel plans. Children should be supervised at all times.



TIMELINE

BASIC TIMELINE OF EVENTS

A photograph of a waterfall cascading over rocks in a lush, green forest. The water is white and frothy as it falls.

HISTORIC FACTSHEET

TIMELINE

Just prior to 1910

It was reported in *The Age* that 'only recently' a new waterfall on the upper reaches of the Taggerty River had been recently discovered and that Sir Reginald Talbot officially opened Lady Talbot Drive a few years ago. It also reported that Lady Talbot Drive had been extended to the falls to open it up for tourists. ([The Age, Friday 25 November 1910](#))

Just Prior to 1910

Keppel Falls is named after the pioneer Keppel Family of Marysville after John Keppel discovered the Falls just prior to January 1910 according to an article in *Table Talk*, published on [13 January 1910](#).

Unknown

Keppel's Falls renamed Keppel Falls.

August 2013

Artworkz commenced work on this Factsheet.

17 August 2013

Artworkz published an article in eSplash67.

11 March 2017

Artworkz published an article in eSplash169.

February/March 2023

Lady Talbot Drive and most of the attractions along the road were re-opened in sections after being closed for a number of years. The closure allowed for safety tree work to be conducted so as to safeguard visitors from falling dead trees. The trees, many of which were mountain ash, died on-mass during the devastating 2009 Black Saturday Bushfires.

14 April 2023

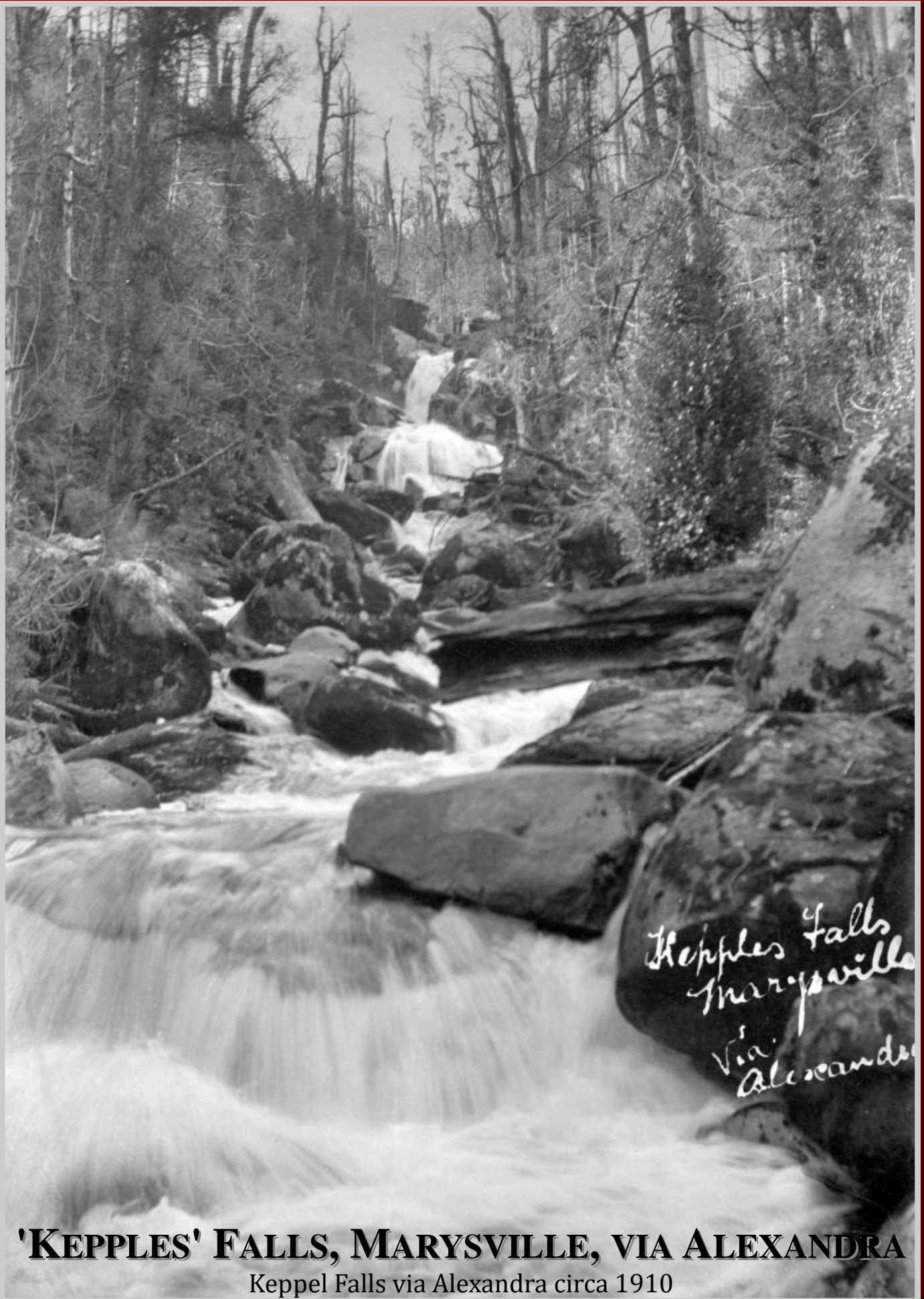
Artworkz published an article in eSplash286.

GALLERY

RELATED IMAGERY

JOHN & MAUREEN NORBURY COLLECTION

District imagery from yesteryear!



'KEPPLES' FALLS, MARYSVILLE, VIA ALEXANDRA

Keppel Falls via Alexandra circa 1910

HISTORIC FACTSHEET

KEPPEL FALLS



THE ROSE SERIES, P. 2335
Copyright

KEPPEL FALLS, MARYSVILLE, VICTORIA

Keppel Falls, Marysville circa 1920

Photographer George Rose
Courtesy State Library Victoria

HISTORIC FACTSHEET

KEPPEL FALLS



KEPPEL'S FALLS; RECENTLY DISCOVERED ON UPPER TAGGERTY RIVER BY MR.
JOHN KEPPEL, MARYSVILLE.

Table Talk
Thursday 13 January 1910
Courtesy National Library Australia

Keppel Falls discovered by John Keppel just prior to 1910

Table Talk 13 January 1910
Courtesy State Library Victoria

eSPLASH
MEDIA
ARTICLES

ARTICLES FROM THE eSPLASH eMAGAZINE

KEPPEL FALLS

A HIDDEN JEWELL
OF MARYSVILLE

*The view from the
Keppel Falls Lookout
on Lady Talbot Drive.
The Lookout is 1 km
further along Lady
Talbot Drive from
Marysville.*



The gorgeousness of Keppel Falls.

We started out early in the morning and headed to Marysville and then Keppel Falls. The 30 minute (1.2 km) walk to the bottom of the Falls was amazing and the Falls were truly spectacular.





Keppel Falls
2km return





This section of track leads past a magnificent granite boulder hanging over the track



The walking track steps near the Keppel Falls viewing platform







FEATURED PANORAMA

Keppel Falls, Marysville, 2013



This 180 degree Panorama was taken with an iPhone from the viewing platform at the Keppel Falls. The platform is a 20 minute walk from the Keppel Falls carpark on Lady Talbot Drive, near Marysville.

Keppel Falls is one of three major Falls in our district, the others being the mighty Steavenson Falls at Marysville and the Snobs Creek Falls (where the top section is open to the public) near the small township of Snobs Creek.

Waterfalls abound in our district and help generate tourism all year. Recently I heard from two readers who travelled to our district to see one of our waterfalls after seeing pictures in our eSplash magazine.

KEPPEL FALLS

LADY TALBOT DRIVE, MARYSVILLE
PUBLISHED ESPLASH169 11 MARCH 2017

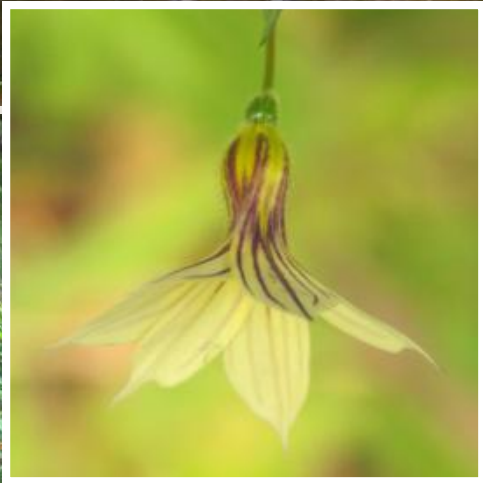
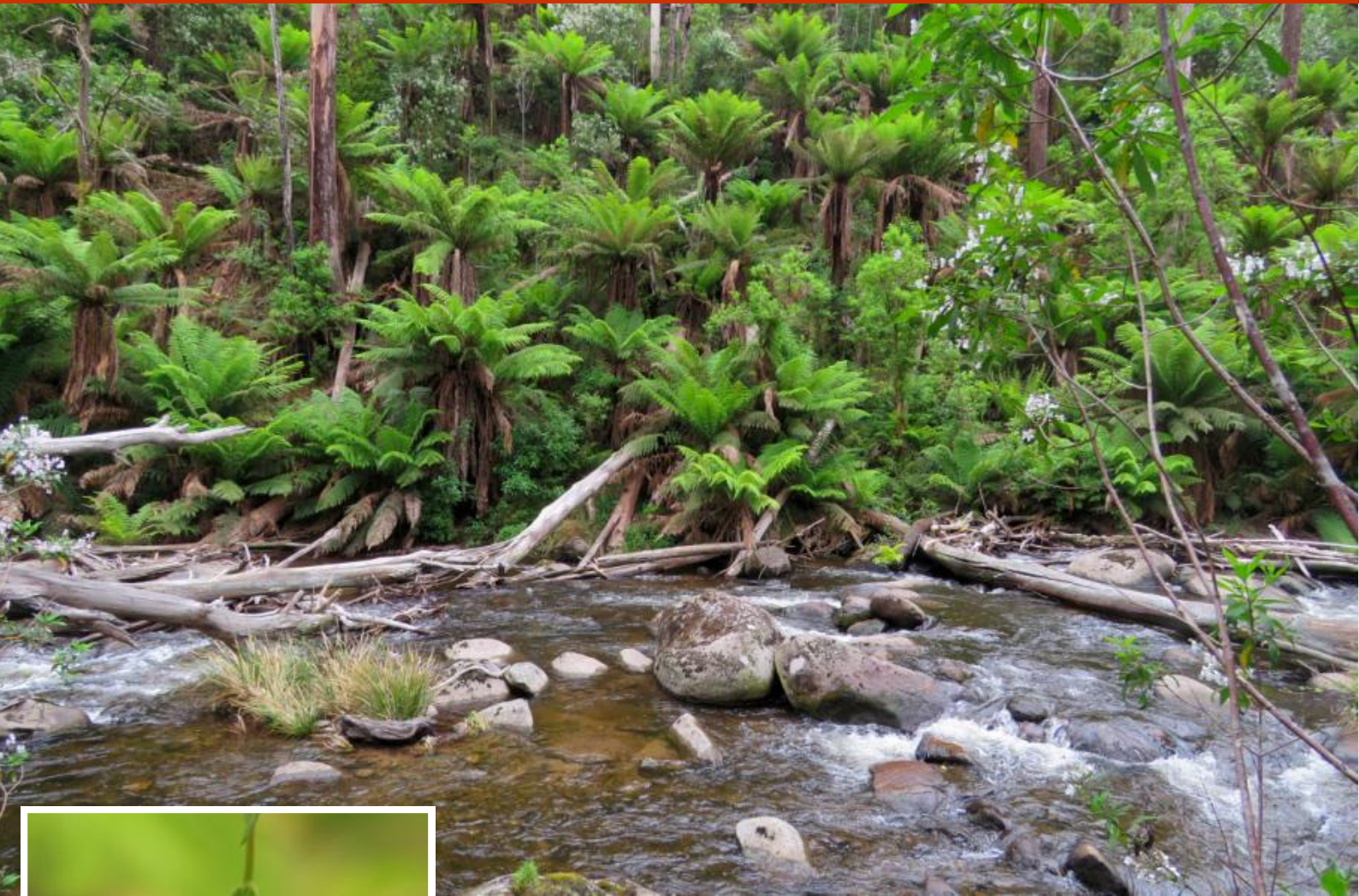
DEPARTMENT: PARKS VICTORIA
MINISTER: LISA NEVILLE



A walk through a beautiful paradise

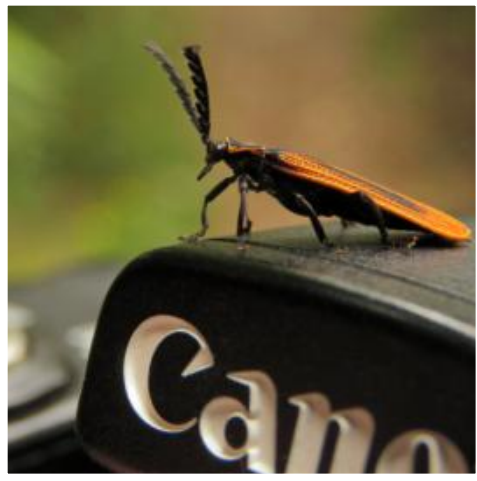
We never get tired of walking to Keppel Falls. The pathway is full of natural surprises and the Falls never cease to impress us. This trip was more of the same - and we were very happy to take it all in.











© Debbie Hibbert 2016





KEPPEL FALLS

LADY TALBOT DRIVE, MARYSVILLE - 17 MARCH 2023
MANAGED BY PARKS VICTORIA - ESPLASH286



A casual walk through nature

With Lady Talbot Drive recently re-opened, it was time for a drive and walk. The area had been closed for a considerable time due to the risk of falling trees, the result of trees killed during the 2009 Bushfires. The trip was extremely rewarding.





- KEPPEL FALLS -



Lady Talbot Drive (top), trail head and scrambled egg slime mould (*Fuligo septica*)



Track views and a cross section of a man tree fern (*Dicksonia antarctica*)









Viewing platform

- KEPPEL FALLS -



Upstream and downstream views



- KEPPEL FALLS -



Time exposed views of the Keppel Falls





Artworkz

Serving the Community