

MURRINDINDI



CASCADES



**NATURE
SERIES**

MURRINDINDI CASCADES

CONTRIBUTORS

Department of Environment, Lands, Water & Planning

Allan Layton
Kathie Maynes
Bob Reed
David & Debbie Hibbert

HISTORIC FACTSHEET

INTRODUCTION

Name: Murrindindi Cascades
Location: Murrindindi Scenic Reserve
Type: Large cascade
Height: Unknown
GPS: S37.459570, E145.571848
Managed By: DELWP

The Murrindindi Cascades are a large cascade style waterfall where tumbles over large granite boulders in a very picturesque bush setting. It is located in the Murrindindi Scenic Reserve.



Murrindindi Scenic Reserve is a large area of pristine Australian bushland located at the northern end of the Toolangi State Forest. It is a short drive from Yea or Melbourne, making it a great day trip destination or camping spot.

The Murrindindi Cascades (formerly known as Murrindindi Rapids) is located at the south end of the Reserve and includes a carpark, Day Visitor Area and toilets. A walking track leads you down beside the Cascades to the bottom viewing platforms/bridges. This is a very photographic area and is even better after a heavy rain. After the 2009 Black Saturday Bushfires the Cascades could be seen from the roadway (above), though regrowth is now obstructing this view.



HISTORIC FACTSHEET

TIMELINE

Circa 1840s - 1850s

Murrindindi Rapids were first discovered.

Unknown

The Murrindindi Rapids were renamed to the Murrindindi Cascades.

2009

The Murrindindi Scenic Reserve was devastated by the Black Saturday Bushfires.

2012

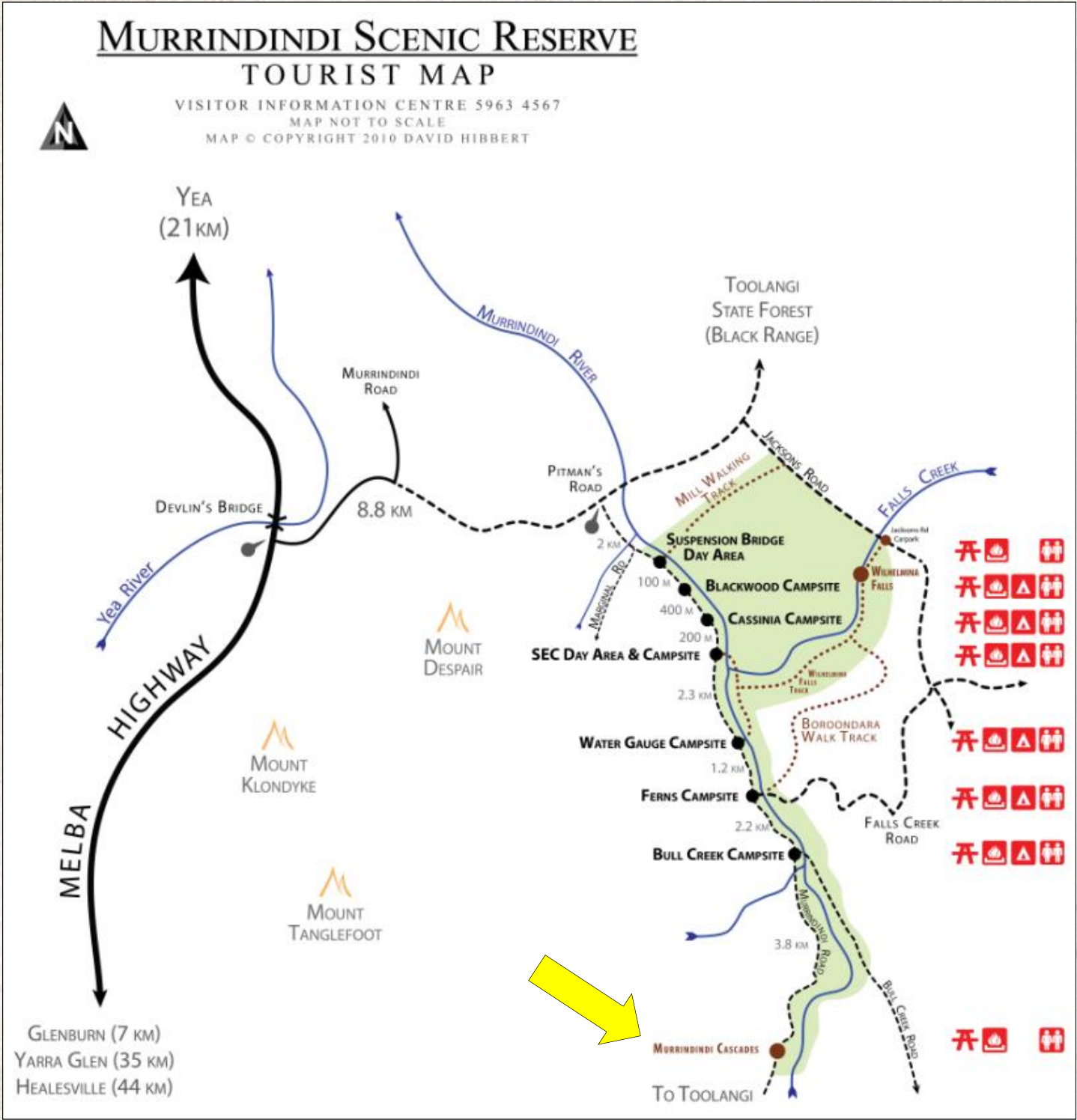
The Murrindindi Cascades were re-opened to the public after major restoration works was completed after the Black Saturday Bushfires.

August 2013

Artworkz commenced work on this Factsheet.

HISTORIC FACTSHEET

MAP



eSPLASH
MEDIA
ARTICLES

ARTICLES FROM THE eSPLASH eMAGAZINE

MURRINDINDI CASCADES

MURRINDINDI SCENIC RESERVE

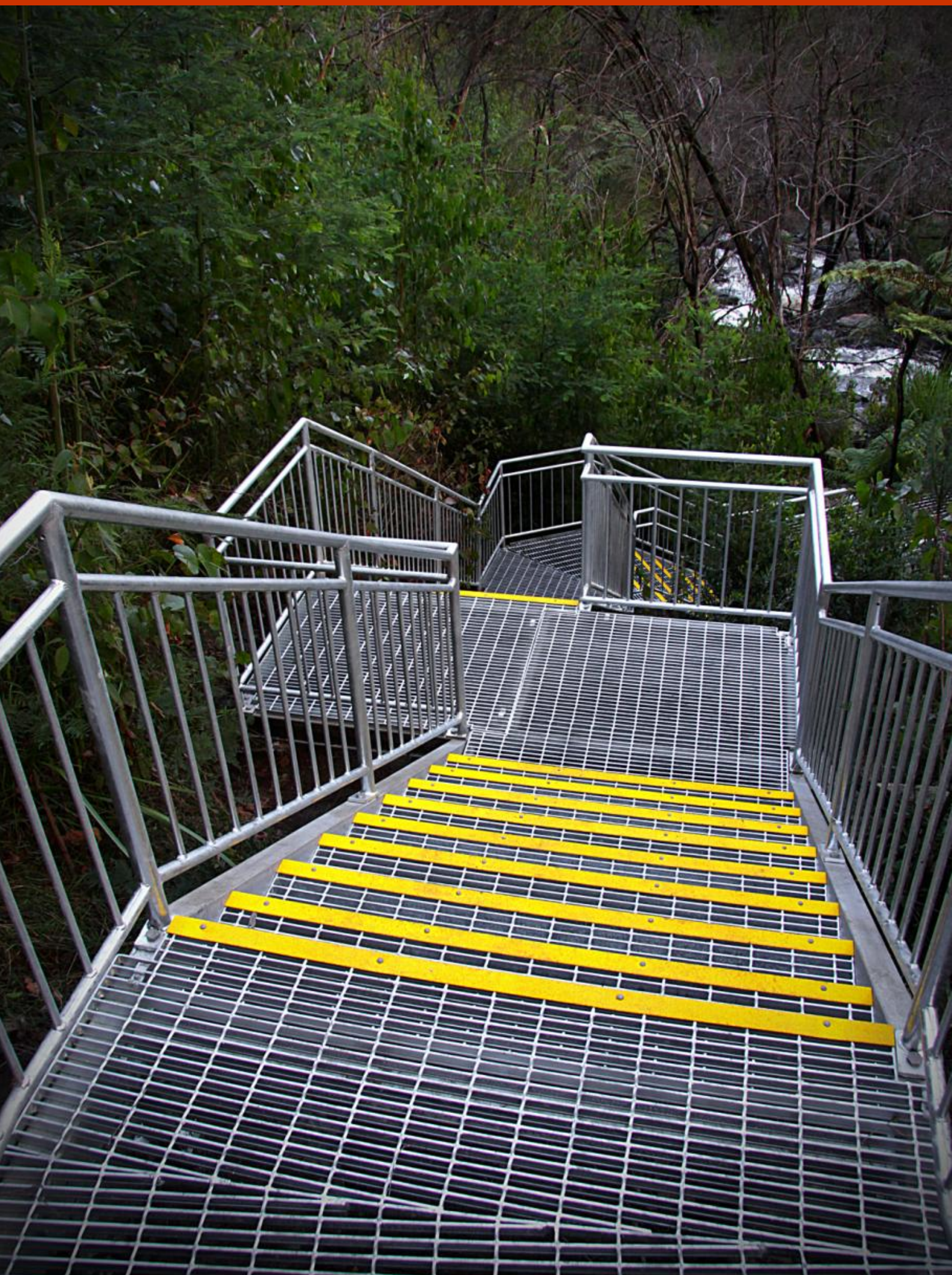


The District's Grand Cascade.

Located in the Murrindindi Scenic Reserve, this large Cascade is easily accessible thanks to well placed steps and bridges. A quality carpark area and picnic tables establish this as one of our best district Cascades.





















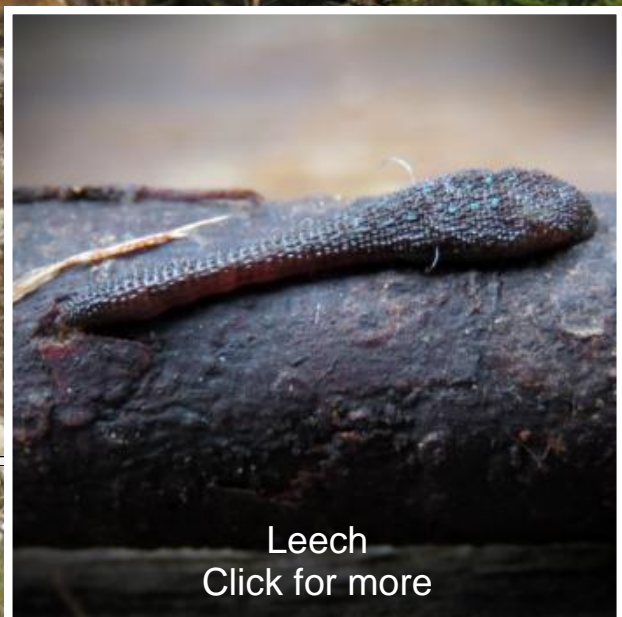
MURRINDINDI SCENIC RESERVE

MURRINDINDI - JULY 2016 - PUBLISHED 16 SEPTEMBER (ESPLASH158)



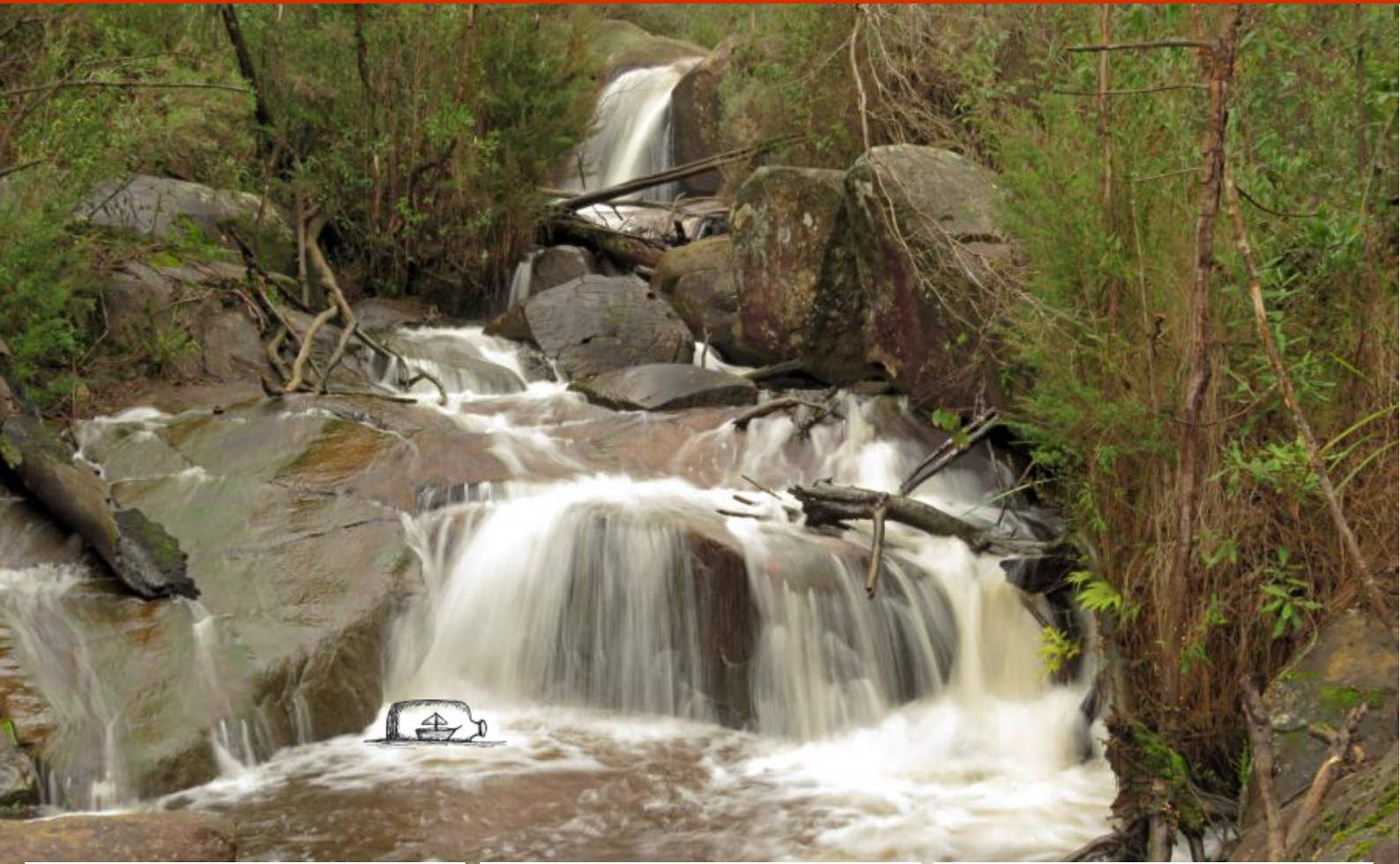
Beautiful Murrindindi Scenic Reserve

An excellent reserve with quality facilities for the day visitor or the camper. Of special note are the beautiful features which abound throughout the reserve, many of which are photographic.



Leech
[Click for more](#)





MURRINDINDI CASCADES

MURRINDINDI SCENIC RESERVE - 2022



A local drive to enjoy nature and running water

Recently we visited the Murrindindi Scenic Reserve to take in the Murrindindi Cascades and enjoy the soothing power of running water. As has been the case each visit, we found plenty to enjoy and photograph.





Murrindindi Scenic Reserve is a large area of pristine Australian bushland located at the northern end of the Toolangi State Forest. It is a short drive from Yea or Melbourne, making it a great day trip destination or camping spot.

The Murrindindi Cascades (formerly known as Murrindindi Rapids) is located at the south end of the Reserve and includes a carpark, Day Visitor Area and toilets. A walking track leads you down beside the Cascades to the bottom viewing platforms/bridges. This is a very photographic area and is even better after a heavy rain. After the 2009

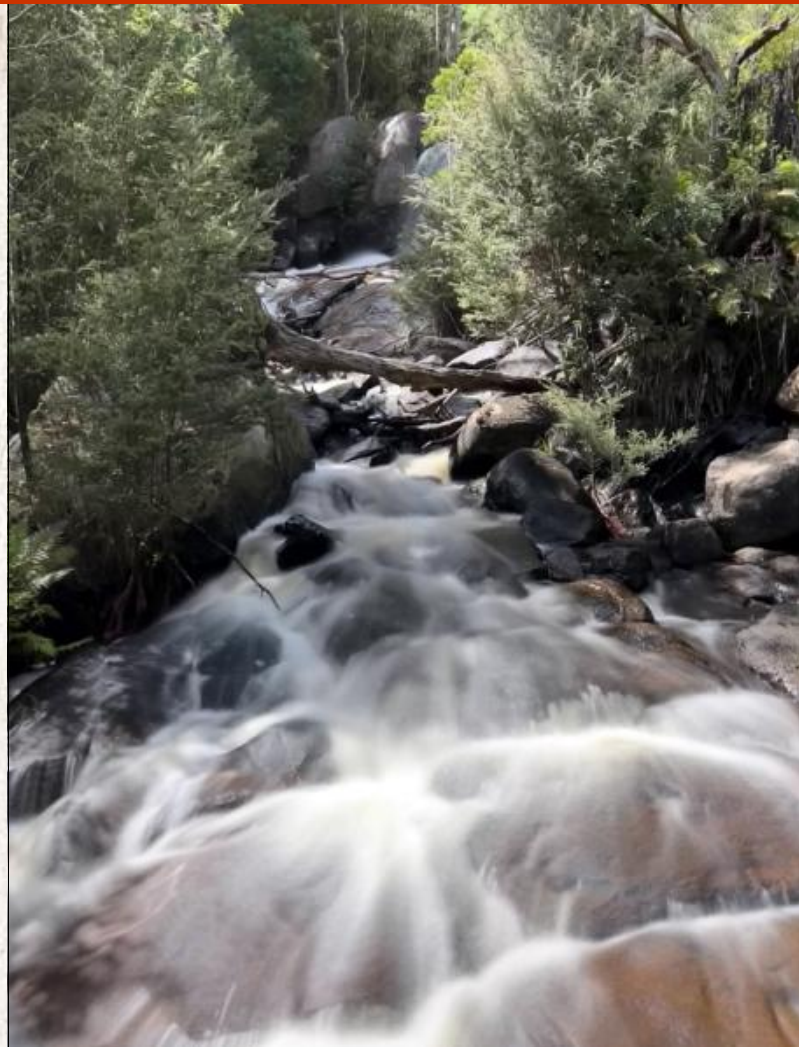
Black Saturday Bushfires the Cascades could be seen from the roadway above, though regrowth is now obstructing this view.





(Top) Jack jumper ant on the bridge railing. (Bottom) Bassian thrush.

- MURRINDINDI CASCADES -



Using the iPhone to produce long exposures was fun as was playing with black & white





Artworkz

Serving the Community