

A scenic landscape at sunrise or sunset. The sun is a bright, glowing orb in the upper center, casting a warm, golden light across the sky. Below the sun, the landscape is filled with misty, rolling hills and valleys. The trees and hills are silhouetted against the bright light, creating a dramatic and atmospheric scene. The overall color palette is dominated by warm tones of orange, yellow, and gold, with dark silhouettes in the foreground and midground.

A CHERON

DISTRICT



HERITAGE  
TOWNSHIP  
SERIES

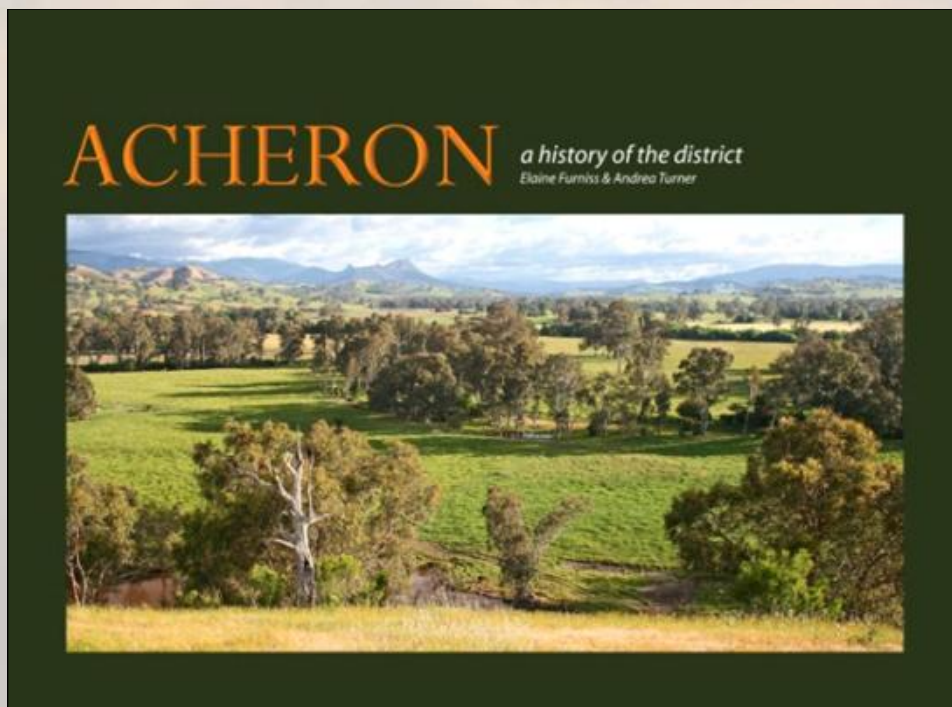
---

# ACHERON PAST TO PRESENT

---

BY ANDREA TURNER, BEVERLEY DICK  
& ELAINE FURNISS

This Fact Sheet is based on the research of contributors to the Acheron History project and the book *Acheron: a history of the district* written to commemorate the centenary of the Acheron Mechanics Institute June 1914 - 2014 and partially funded by Public Record Office of Victoria and Murrindindi Shire Council.



**'ACHERON a history of the district' is available for sale at [www.acheronhall.com](http://www.acheronhall.com) and available for loan at the Alexandra Library.**



# Fact Sheet



## ACHERON

**Name:** Acheron & district  
**Located:** Central Victoria, Australia  
**Settled:** 1839  
**Hall:** Established 1914 as Mechanics Institute and Free Library.

The history spans the story of Acheron from its Aboriginal beginnings, through the period of squatting and selection, and on into the 21st century as Acheron continues to change and adapt.



Acheron Mechanics Institute  
Photograph © James Bonsema.

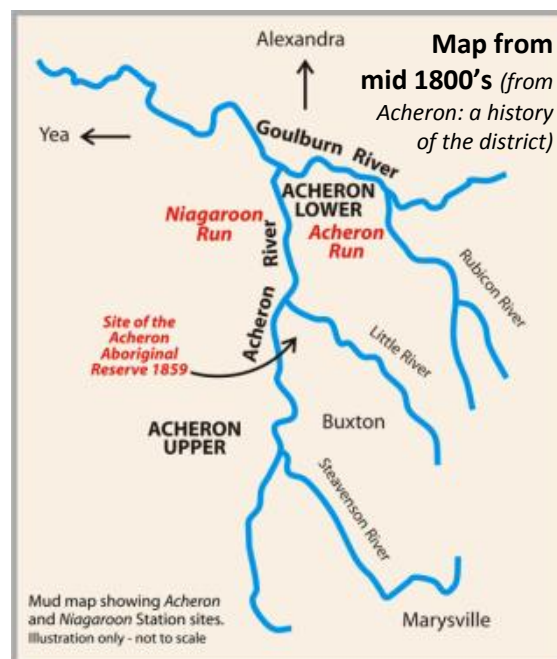
### Where is Acheron?

Acheron is located on the Acheron River as it enters the Goulburn River in NE Victoria. It is flanked by the Black Range to the west and the Blue Range to the east. Acheron was a place where the early travellers could ford the rivers between Yea and the gold diggings at Woods Point. The view to the south from Acheron is dominated by Mount Cathedral.

# ACHERON

## Who came to Acheron first? <sup>1</sup>

Long before white settlers arrived, Acheron was home to the Daung wurrung (also known as the Taungurung) people who lived along the Upper Goulburn River close to a series of 100 lagoons from King Parrot Creek (near Trawool) to the Acheron River where fish and other forms of food could be hunted or gathered. This changed when the land was settled by white people and stock was introduced. In 1859, the local aboriginals asked the government in Melbourne to set aside an area of land where they might live and work a farm. This was successful for a while but the government broke its promise and moved the reserve. In 1863 William Barak and Simon Wonga from the Wurundjeri people, along with John Green, Presbyterian missionary, led the Daung wurrung away from Acheron over the Blacks' Spur to Coranderrk in Healesville.

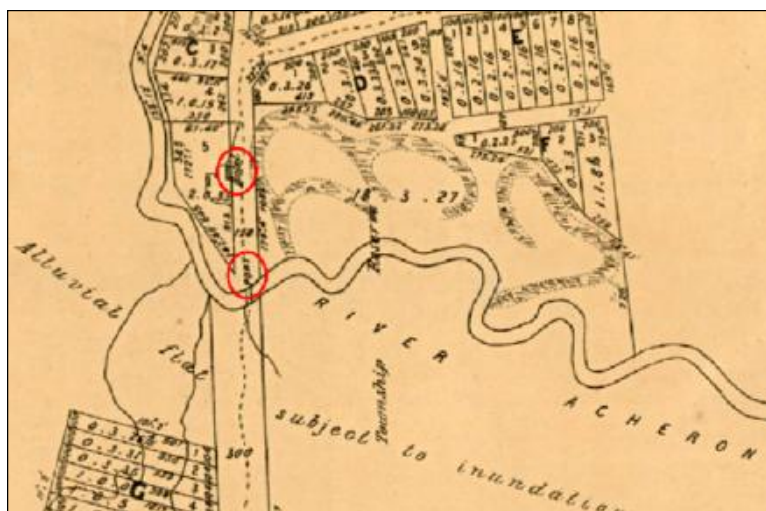


## Squatters <sup>2</sup>

Squatters came to the district from 1839 onwards, living on large areas of land called 'runs'. Two main runs stretched between today's Acheron and Taggerty (then known as Upper Acheron). The first, Acheron Station, lay between three rivers – the Acheron, the Goulburn and the Rubicon. The second, Niagara Station, lay on the west side (Yea side) of the Acheron River from present-day Taggerty down to the Goulburn River. These were huge tracts of land with no fences, and squatters and their farm managers often had few farming skills.

## Acheron's earliest settlers <sup>3</sup>

John Mayne Conolly and his wife Mary Sophia (nee Watton) were among Acheron's earliest white settlers. He worked as a manager on



John Downey (1866). Plan of the township of Acheron. Dept. of Lands & Survey, Melbourne

<sup>1</sup> See *Acheron: a history of the district* p8-11

<sup>2</sup> See *Acheron: a history of the district* p15-22

<sup>3</sup> See *Acheron: a history of the district* p17

# ACHERON

Niagaroon Station for squatter, Hugh Glass, around 1854. An early 1861 map shows his home. John Downey's 1866 survey map of Acheron shows the remains of his home and orchard, and the punt and hotel run by his mother Charlotte. A Eugene von Guerard sketch of Niagaroon also shows his home. The present day Acheron Hall (Acheron Mechanics' Institute' and Free Library) was built in 1914 on the site of his orchard on land donated to the local community by Thomas Connelly (no relation of John Conolly who took up ownership of this land in 1870 and after whom Connelly's Creek and Connelly's Creek Road are named).

## Gold <sup>4</sup>

Gold was discovered on Niagaroon Station in 1870 but by 1876 it had run out and the gold rush was over. Hundreds of people camped on the Acheron flats hoping to find gold. A last attempt by the New Acheron Mine and Acheron Gold Reef Company to mine gold in Connelly's Creek Road ended in the late 1930's. Old mine diggings still exist in the hills on what was Acheron Station, the site of the short lived Fiery Reef. This image from *Acheron: a history of the district* shows what remains of the New Acheron Mine in Connelly's Creek Rd. (Image R. Cumming).



## Who were the earliest selectors and why did they come to Acheron? <sup>5</sup>

### Selectors

Connelly  
Cumming  
Dick  
Doak  
Dobson  
Gorman  
Maudouit  
McCull  
Moir  
Robertson  
Wilmot  
Wylie

After the government made squatting illegal, land could be selected and owned for the first time. Many early selectors came to Australia by ship in the 1850's and 60's from Ireland and Scotland in search of a better life. The earliest selectors came to Acheron in the late 1860's. To keep their selection, they had to show the government that they had cleared, fenced and cultivated their land and erected a dwelling. To acquire more land than the allowed amount for one person, other family members were often named as dummy selectors, including wives.

### Early Land Holders

Coller  
Edwards  
Keen  
Rennie  
Squire  
Webster  
Weeks

<sup>4</sup> See *Acheron: a history of the district* p34-35

<sup>5</sup> See *Acheron: a history of the district* p37-75

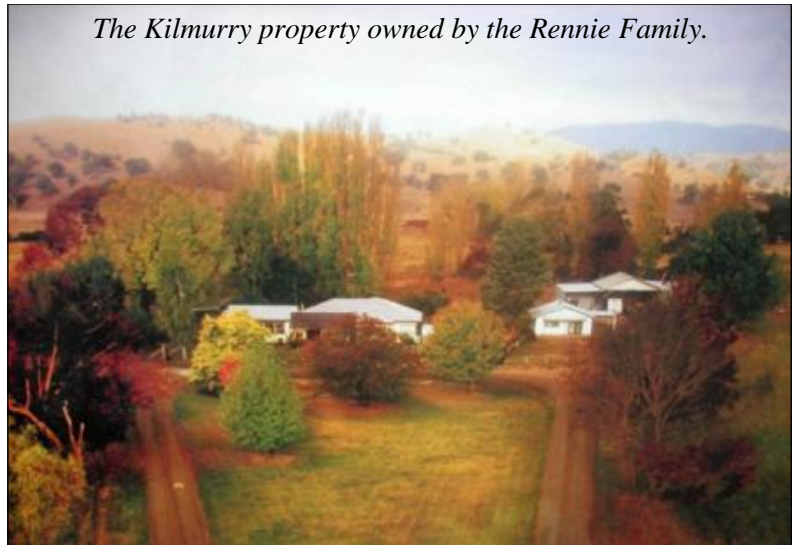
# ACHERON

## Early land holders <sup>6</sup>

Many early landowners arrived in Acheron after 1900 and bought land.

Many came to the area after working on other farms in other regions and saving to buy their own land. Some were sponsored by people already living in Acheron. They enriched the community and their children attended the local

Acheron School. Most of the families listed here, or their descendants, remain on land in the district today such as the Rennie family at Kilmurry (right).



## The township of Acheron <sup>7</sup>

John Downey surveyed Acheron Township in 1866. Despite plans, Acheron Township didn't grow. Many of the blocks were bought by local farmers and with few new residents and businesses, the town did not expand much, only having a post office, a school and in 1914, a Mechanics' Institute and Free Library (the Acheron Hall) and C.F.A. Today the township area has a few houses, the Acheron

Hall, the C.F.A. and a tennis court as reminders of past adventures and dreams.

Signs are reminders of the past and use the names of the early selectors and landowners.



<sup>6</sup> See *Acheron: a history of the district* p77-94

<sup>7</sup> See *Acheron: a history of the district* p12-33

# ACHERON HALL

Bev and Gwen Dick at  
Dicks Road sign 2014.



## The Acheron Mechanics' Institute and Free Library<sup>8</sup>

The Acheron Hall built was built in 1914 from public donation and government grants. Some families gave poddy calves to be raised and sold when grown.

In any small country town, strong friendships and assistance from neighbours are the keystones to surviving the hardships of isolation, natural disasters, accident and illness.

From the beginning, the Hall provided a much needed venue for committee meetings, celebrations, farewells, dances, balls, presentations, school concerts, Sunday school

and church, choir practices, wedding receptions, voting and fundraising. Up until the new concrete Acheron Bridge was built in 1942, the original road through Acheron took travellers right past the Acheron Hall to where a punt, and later the first Acheron Bridge, would enable them to cross the Acheron river and continue their journey to Thornton, Darlingford and Woods Point. The old tennis court is currently undergoing restoration. A new C.F.A. shed stands next door to the Acheron hall.



The Acheron School that stood at the start of McColl Lane is no longer there. The following diagram from *Acheron, a history of the district* shows where the Hall is and where the Post Office and the school used to be.

<sup>8</sup> See *Acheron: a history of the district* p146-163

# ACHERON HALL

## Memories of Acheron Hall from Alexandra Standard

*Opening Acheron Hall June 14, 1914*

On Wednesday of last week, Acheron had the great day of its history, a greater event on some respects than when the first white man lit his first billy fire and pitched his tent on the site selected for the hall...Not only is the hall the centre of the new, modern social life, it is the monument of the "site" of the first settlement. ....The structure is neat, artistic, and well adapted for its purpose. Mr. Ferguson, the designer and contractor, who carried out the design, is to be congratulated on his double work as architect and builder...

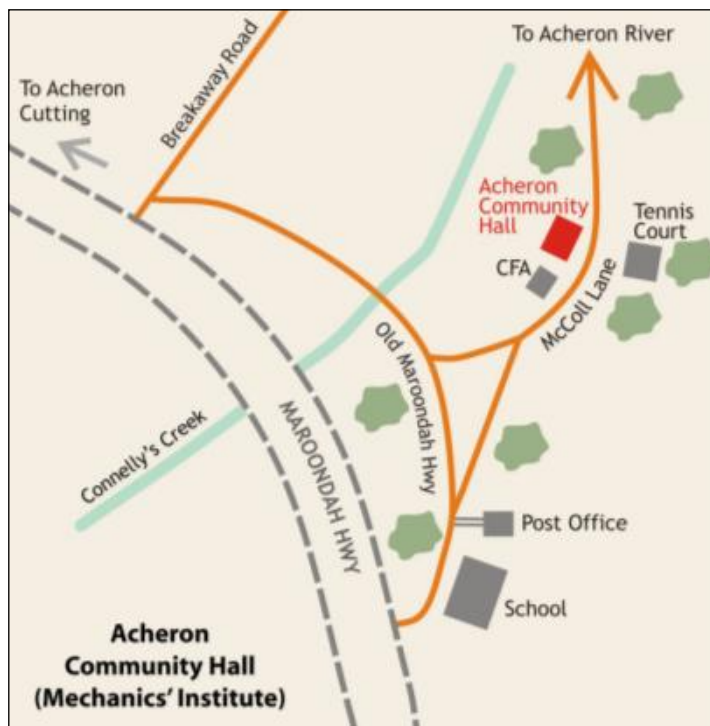
*1913 'Acheron.', Alexandra and Yea Standard & Yarck, Gobur, Thornton & Acheron Express (Vic.: 1908 - 1949), 24 October, p. 2*

**1917 Farewell to Privates J. and P. Collery.** A farewell social was tendered to Privates Jack and Pat Collery on the 20th July in the local hall, prior to their leaving for war. The hall was overcrowded to the doors with so many friends of these two popular lads. Mr. Andrew was in the chair and spoke of the many good qualities of the Collery Brothers, He wished them a safe return and many decorations.....*1917 'Acheron.', Alexandra and Yea Standard and Yarck, Gobur, Thornton & Acheron Express (Vic.: 1908 - 1949)31 August, p. 3*

**1925 The Christmas tree in the Acheron hall** on December 18th was very successful. Miss Curtain, the head teacher, arranged and carried out a varied programme, and she deserves thanks from the residents for her trouble. Each child received a nice gift and a bag of fruit and sweets. A lavish supper was provided by the ladies. Mr. W. Connelly as Santa Claus, in a realistic costume, delighted the children.

*1926 'Acheron.', Alexandra and Yea Standard and Yarck, Gobur, Thornton & Acheron Express (Vic.: 1908 - 1949), 8 January, p. 3*

**1936 Wedding at Acheron.** Attended by two bridesmaids, Catherine Elsie, eldest daughter of Mr. and Mrs. W. J. Connelly, of Acheron, made a most attractive bride as she entered the Acheron Hall on the arm of her father...The bride's gown was of



*Diagram showing the position of the Acheron Mechanics' Institute and Free Library, CFA and School in relation to the old and current Maroonah Highway.*



# ACHERON HALL

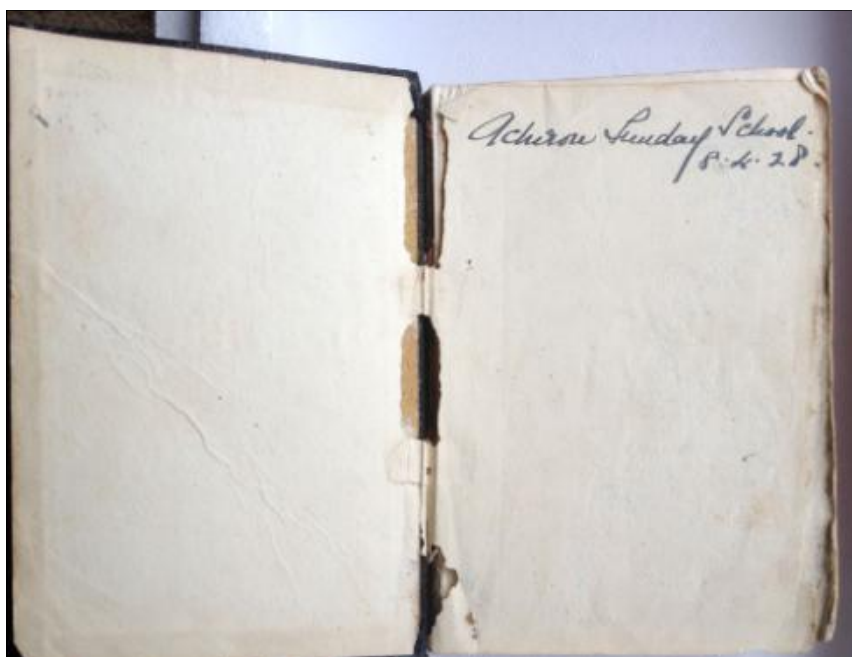
white magnolia satin with train, the cap effect being made from very old family lace; a flowing tulle veil being kept in place by a coronet of orange blossom. The bride carried white cactus dahlias and white carnations, with white streamers. Little Betty Napier was a confident trainbearer in white tulle (early Victorian), and carried pink rosebuds. The bridesmaids were dressed alike in pink georgette and carried red gladioli and carnations, with streamers to match.....

*1936 'Wedding at Acheron.' Alexandra & Yea Standard and Yarek, Gobur, Thornton and Acheron Express (Vic. : 1908 - 1949), 28 February, p. 2*

**Church and Sunday school** were held in the Acheron Hall by several denominations. Pictured right is an Acheron Sunday school Bible from 1928.

## **Euchre and dance parties**

**Bob Rennie remembers:** 1939-1946 were wonderful years with lots of local entertainment. We were not allowed to go to war because we were milking, so our contribution to the war effort was picking fruit at Shepparton. There were always euchre parties and dance parties and fund raisers at the Acheron Hall. People didn't live on your back door, but if you were in trouble...they were there.



— D A N C E —  
ACHERON HALL  
Friday, 9th SEPTEMBER, '55.  
8.30 p.m. to 1 a.m.  
Excellent supper — Good floor.  
In aid of the Alexandra District  
Hospital Ladies Auxiliary.

# THREE RETURNED SOLDIERS

**Welcome home to returned soldiers held 2 October 1919.**

*Courtesy Ian Newman.*



## ***Acheron (From Our Correspondent). Newspaper Article.***

*A welcome home was given in the Acheron, Hall on October 2, when the residents met in honor of three of our returned soldiers, via. Privates E Cumming, John Collery and E Peters. Mr. A Dobson presided and he welcomed the lads on behalf of the residents. He said all were glad to see the boys back. They were a fine type of men. Privates Cumming and Collery had seen a good deal of the war and no doubt had done good work. Private Peters arrived on the other side as peace was declared, but the lad had wanted to go long before he was able to do so and it was his regret that he had not been able to take his share in the world's great war. Mr. Hillman also extended a welcome to the boys. The State School children recited and sang. Miss Silverhouse, head teacher, having prepared them. Gold medals were then presented to the boys and then afternoon tea, provided by ladies, was partaken of. Private Collery responded on behalf of himself and Private Cumming. Private Peters returned thanks.*

*Alexandra & Yea Standard and Yarck, Gobur, Thornton and Acheron Express  
24 October 1919, p. 3.*

# ACHERON HALL



Today the Hall continues to be an important hub for the local community with regular use of the building.

Father Xmas continues to appear at the Christmas party held each year at the hall and the C.F.A. remains a strong focus in the Acheron community having begun as the Acheron Bushfire Brigade towards the end of the 1930s, prior to World War 2. A new truck in 2013 and a new shed erected next to the Acheron Hall in 2014 ensure the Acheron branch of the C.F.A. is well equipped to fight fires.



# ACHERON CFA CREW 2010



*Acheron CFA crew 2010:*

*Top of truck L to R: Gary De Klijn, John Munday*

*Ground level L to R: Barb Gamble, David Gamble, Corrie De Klijn, Louise Edwards, Simon Turner, Jamie Walker, Bernice Webster (Image John Munday)*

# ACHERON HOMES AND FARM BUILDINGS

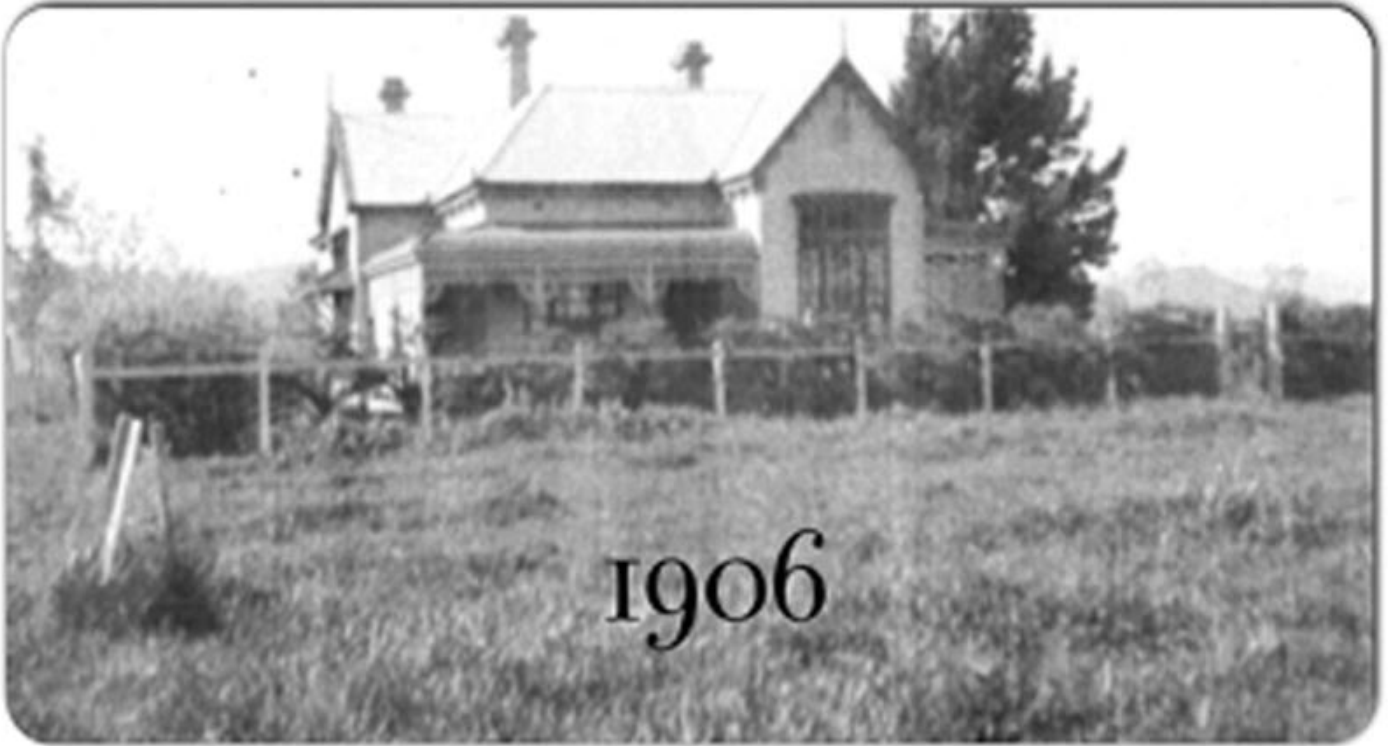
**Acheron has a number of farm houses and other buildings**<sup>9</sup> from the late 1800's onwards which survive today, showing life in Acheron in earlier times. Brick chimneys, pitched tin roofs, verandahs with fretwork in iron or wood, high ceilings, wooden floors and walls, sheep fleece and sea weed in roofs as insulation, kitchen fireplaces, wood-fired stoves and old coppers in laundries are still in many of these homes. The remains of milking sheds, shearing and hay sheds, machinery, farm vehicles, implements reveal past farming practices and inventions.



**Old Bonsema woolshed, Acheron 2014.**

<sup>9</sup> See *Acheron: a history of the district* p210-227

# ARALUEN



**Araluen** is a Victorian style homestead, originally built around 1902 by local builder John Ferguson for Robert Dobson Jr, son of one of the first selectors, Robert Dobson Sr. Local folklore says the house was haunted.

# HEATHERLY

The first house at Heatherly, 1923.  
Eric and Allan Cumming.



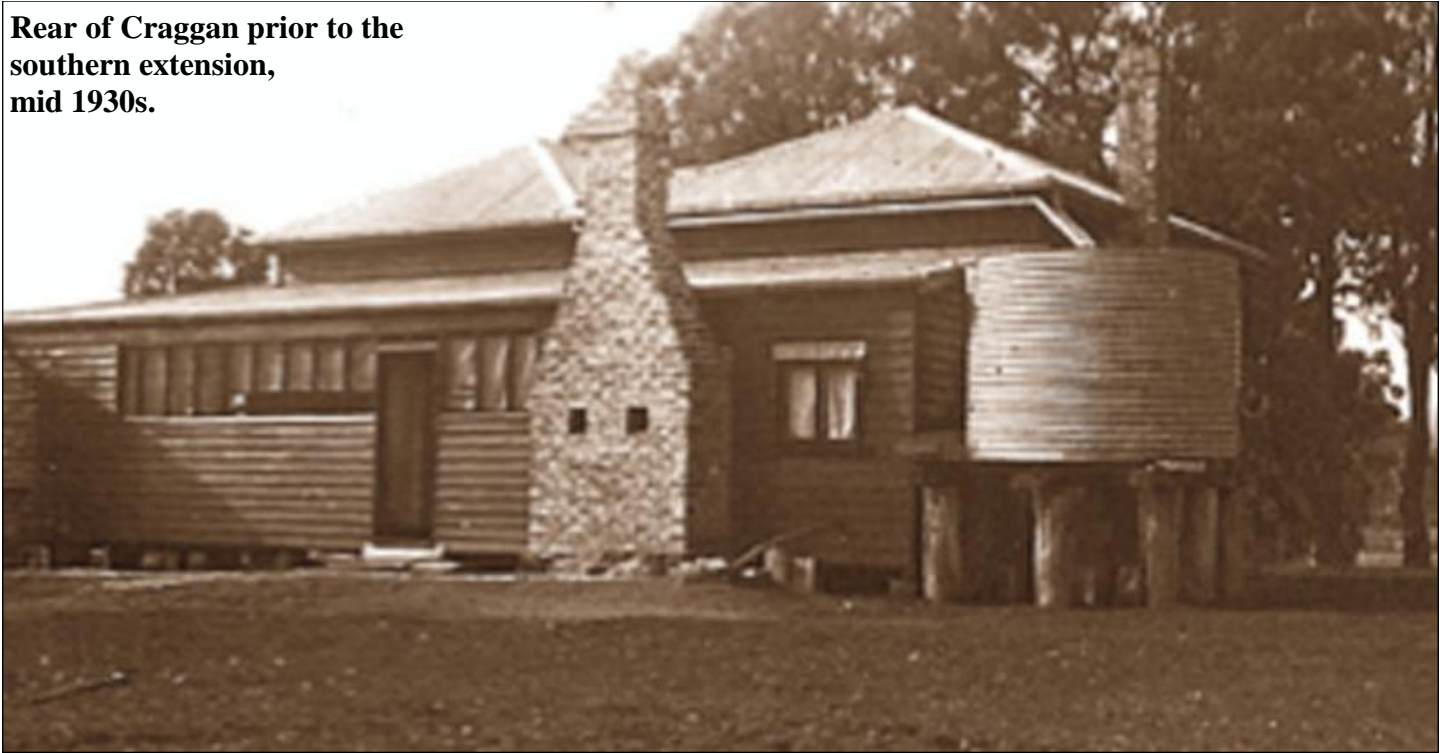
Heatherly 2014.

## **Heatherly ~ 150 Connelly's Creek Road**

The first Heatherly on the site was built for John and Margaret Cumming after they gained the land in 1889. Their son, Eric, built the second (current) house about 1921 for his bride Ella. They lived there until 1930, and then moved next door to Craggan.

# C R A G G A N

Rear of Craggan prior to the southern extension, mid 1930s.



Front of Craggan, circa 1985.



**Craggan ~ 291 Connelly's Creek Road** was built for Ella and Eric Cumming when they moved from Heatherly in 1930. The house was built by Hendy Lewis.



# KILBIRNIE HOUSE

*Kilbirnie House, 2012.  
Courtesy Gwen Dick.*



*Courtesy Gwen Dick.  
Photographer Marion Dick.*



**Kilbirnie ~ 3915 Maroondah Highway** has been the home of the Dick family since 1910. Kilbirnie is a Victorian weatherboard house constructed by Hector William Dick at the time of his marriage to Mabel Hemingway, teacher at Acheron and Taggerty Primary Schools in 1910. Daughter Marion Dick remembers the name Lundquist or Lindquist as the builder.

# MUNDROOLA

**Front of Mundroola during restorations in 2013.**

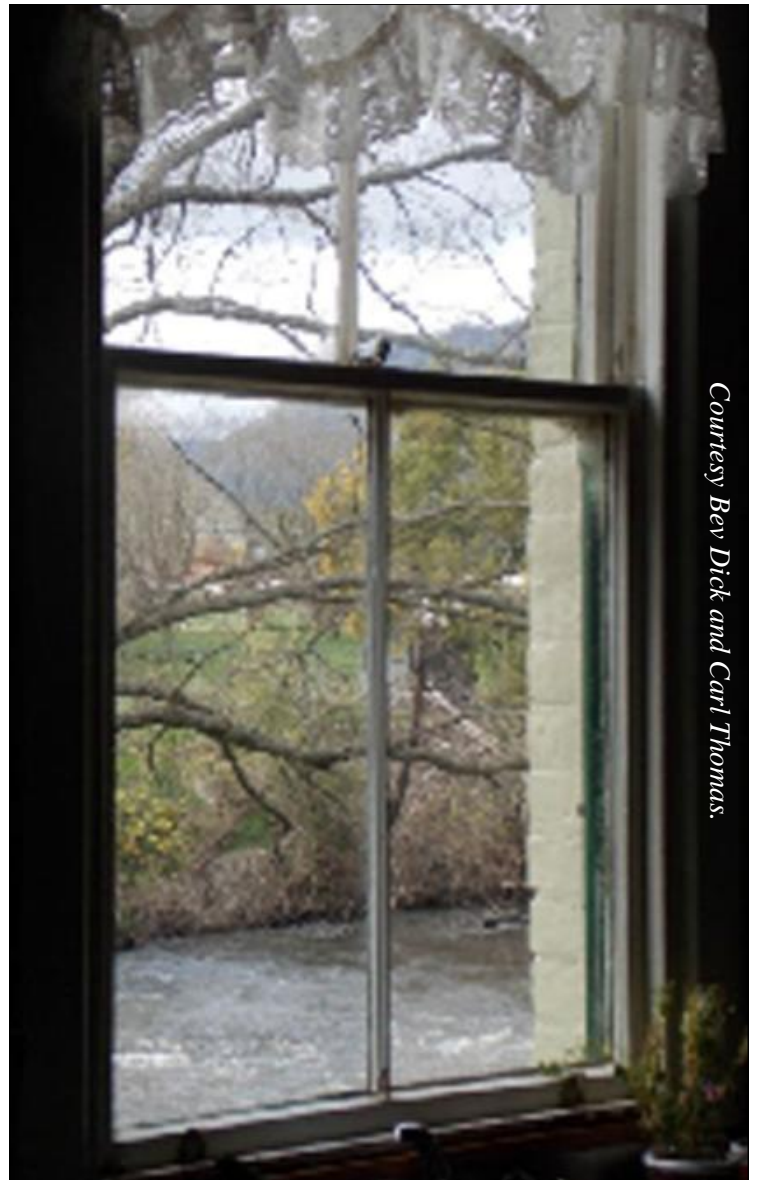
*Courtesy Bev Dick and Carl Thomas.*



## **Mundroola ~ 3370 Maroondah Highway**

Mundroola, then called Kelvin Grove was the home of the Wylie family and stands opposite Wylie's Hill. It's one of the earliest dwellings in the district and was built before the Acheron floods of 1870.

Its current kitchen was the original brick dwelling built by Wylie, and is very close to the Acheron River.



*Courtesy Bev Dick and Carl Thomas.*

# YELLOW GLEN COTTAGE



**Yellow Glen Cottage ~ Acheron Road ~ built on the Dobson's property for farm workers.**

# THURLBY LODGE



**Thurlby Lodge ~ 26 Breakaway Road** was built as part of the original Dobson estate around 1902 on one of the township blocks. Originally called Wattle Grove, it survives intact today with its original fireplaces, kitchen chimney, high ceilings and hall archway. Many of the timber framed walls retain original hessian wall linings.

# CORNER BREAKAWAY & ACHERON ROADS

*Courtesy Andrea Turner.*



*Courtesy Andrea Turner.*



## **Cnr Breakaway and Acheron Roads**

Reminders of the past erected by early selector, Anderson Dobson ~ circa early 1900's. Made of concrete blocks, this silo (left) stored silage.

# NIAGAROON STATION WOOLSHED



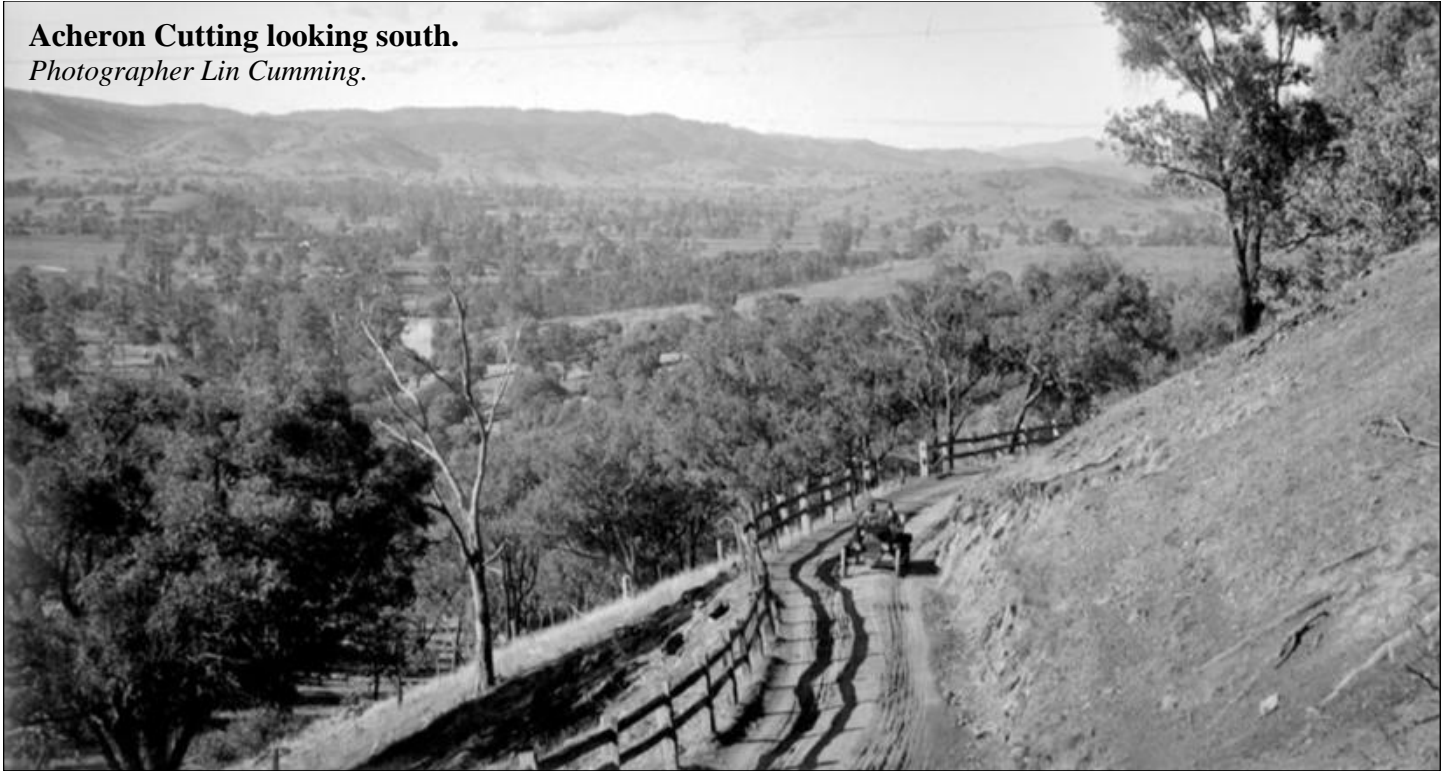
## **Niagaroon Station Woolshed**

4799 Maroondah Highway, Whanregarwen is at the northern end of the Niagaroon Run which extended from Taggerty to the Goulburn River.

# ACHERON

## **Acheron Cutting looking south.**

*Photographer Lin Cumming.*



## **What was life like in Acheron in the early days? <sup>10</sup>**

Life was difficult for early settlers coping with freezing cold winters, exhausting hot summers and with dusty, pot-holed roads in the summer and muddy, often impassable tracks in the winter. Floods and bushfires, snakebite, disease and farm accidents were accepted as part of a farming life. With limited medical knowledge and facilities at hand, women and children were at risk. Modern vaccinations, anaesthetics and antibiotics were not available until after WW2 and a snakebite remedy was often worse than the snakebite itself!

## **Travelling In Acheron <sup>11</sup>**

It was often dangerous for riders, horse-drawn carts and bullock drays to cross the Acheron and Goulburn rivers into Acheron in the 1800's and early 1900's via fords made from logs and rocks. Small wooden punts also ferried people across the two rivers. Even when bridges were eventually built, access was not always safe, especially in times of flood. Rain and flooding sometimes made roads impassable. The narrow and winding Acheron Cutting was very dangerous and many accidents occurred there.

## **Dangers of Early Times**

**Snakebite:** A fatal case of snake-bite happened to a young girl, fourteen years of age, the daughter of Mr. Wylie, a well-known and much respected resident of the Acheron, on January 10. The girl was in the harvest-field helping to build stocks, when she was

<sup>10</sup> See *Acheron: a history of the district* p106-114

<sup>11</sup> See *Acheron: a history of the district* p115-128

# ACHERON

bitten by a tiger snake on the left leg, about three and a half inches above the ankle. She was immediately attended to by her relations, who were near at hand, and after a ligature had been tied round the leg and the wound sucked, the girl walked a distance of a mile to her home, and when she had arrived there had become almost blind; brandy was then administered. A messenger was dispatched for Dr. I Fergusson, who administered Professor Halford's remedy, injecting ammonia, but the girl did not return to consciousness and died.....

1878 'GENERAL NEWS.' *Border Watch (Mount Gambier, SA : 1861 - 1954), 19 January, p. 4.*

**Drownings:** Anderson Dobson saved his sister when she got into difficulties in crossing the Goulburn and the horse and jinker were swept away. His sister caught hold of a snag in the middle of the river. She called for help till she was quite exhausted; the drowned horse and the jinker were on a snag just above her. On hearing of her plight he ran to the river, jumped in, swam through a roaring current, got his sister on his back and brought her to safety.

1935 'A District Pioneer.' *Alexandra and Yea Standard and Yarck, Gobur, Thornton and Acheron Express (Vic.: 1908 - 1949), 5 July, p. 2*

**Riding side saddle:** Having procured (borrowed) a horse, and putting on a riding habit, she (Miss Nichols) attempted to ford the swollen waters of the Goulburn... When in the centre of the river, her horse was observed to stumble, and losing control she fell off into the river. Her riding habit skirt caught the horn of the saddle, and the horse was seen to turn and plunge violently with its fore legs, and must have struck the unfortunate girl, as she was seen to be floating 200 or 300 yards down the river immediately after. The horse turned and came back. When it reached the bank a portion of Miss Nichols' habit was found attached to the horn of the saddle. The deceased was to have been married in a fortnight.

1888 'SAD FATALITY AT ALEXANDR.', *Bendigo Advertiser (Vic.: 1855 - 1918), 23 August, p. 4*





# ACHERON

**Clearing land in Acheron:** William Connelly, of Acheron, who was blasting logs, met with a severe accident a few days ago. He put powder in a hole, and he lit some fuse to

try it. A spark fell on the powder, and he was badly burnt about the face, both eyes being partly blinded. He can now see out of one eye, and is progressing favorably.....

*1904 'BLASTING ACCIDENT.' The North Western Advocate and the Emu Bay Times (Tas. : 1899 - 1919), 30 December, p. 3*

**Car crashes on the Acheron Cutting:** One woman was killed and another injured last evening when the car in which they were travelling struck a tree and capsized while descending the cutting through Acheron, near Alexandra. Travellers in another car who came along about an hour later discovered the women in the overturned car and took them to Alexandra Bush Hospital.

*Saturday 14 July 1945 The Argus Melbourne, Vic.*

*Mary Jane Boorn who was killed on the Acheron Cutting.*



# ACHERON PS 1449



## **Acheron PS 1449 in 1955.**

*Robert Johnson, teacher*

*Girls L-R: Bernice Webster, Christine Binns, Robyn McColl, Marlene Burton, Jill Christie, Anne Dobson, Margaret Binns, Robyn Binns, Heather Christie*

*Boys L-R: Brian Dick, Ross Dick, Paul Wraith*

**Acheron PS 1449**<sup>12</sup> The first school (1872) was on Anderson Dobson's land over the river. The Acheron School PS 1449 was on McColl Lane. PS 1449 closed its doors for the last time in 1985. PS 1449 had one classroom with one teacher who would often board with a local landowner. School prizes and school inspection reports were recorded in the local newspaper. In the early days, children would walk or ride horses to school. Not all families could afford shoes for all their children but the school rules stated that students had to wear shoes into the schoolroom so sometimes they would share them by passing the shoes out the window to a child who did not have any! Bob Rennie remembers riding to the Acheron school in the 1920-30's period: *"We all rode to school and then the horses stayed in the horse paddock. We rode Timor ponies of about 11 hands: Pepper and Pearl, who was stubborn."*



<sup>12</sup> See *Acheron: a history of the district* p158-181

# ACHERON BRIDGE



## The first Acheron Bridge <sup>13</sup>

An early Acheron Bridge was at the end of McColl Lane past the Acheron Hall where the Acheron River punt once was. Flooding was a problem until the first Eildon dam was constructed. However locals still kept guard in case they needed to move stock to higher ground or escape should the dam wall break. Marie Lee and her brother Bob Rennie remembered those days when floods made the bridge impassable:

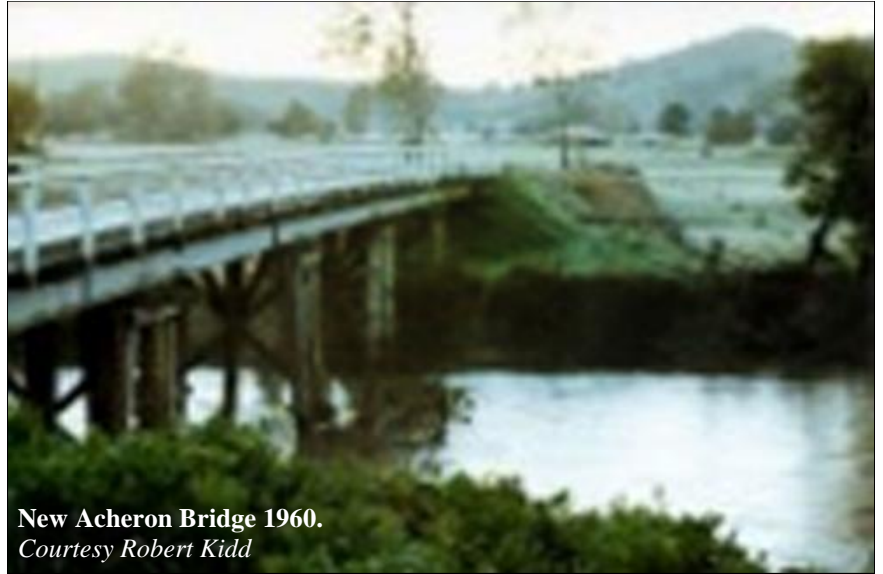
*In Acheron there were floods every 2 to 3 years right across the flats until the second wall was built at Eildon. There were snakes and rabbits - thousands of them. Floods were a big problem and after the levels went down we then had to let rain wash the silt off the grass so the cows had something to eat. The whole of the flats were made up of small islands when it flooded and each island was full of rabbits. There used to be lots of depressions in the roads. The place was very isolated when it flooded. The Eildon Dam alarm bells were used 80 years ago, once a big crack had been found in the first dam wall. Each morning at 8 am and every night at 6 pm, the alarm bell sounded to signify that everything was OK. Every house from Eildon to Yea was connected to the alarm system. One day a cockatoo with a chain on its neck flew into the wire around Thornton and set off the alarm bell. It was about 11 o'clock in the morning. The share farmers who were working at Robert Dobson's place took off and went up onto Rennie's Hill and wouldn't come down because they thought the place would be flooded. There was another incident. We were really flooded out and a house caught fire at Thornton and set off the alarm bells about 12 or 1 o'clock at night. Everyone took off and up Rennie's Hill.*

<sup>13</sup> See *Acheron: a history of the district* p119-125

# ACHERON BRIDGE

## A new Acheron Bridge

To ensure access to Acheron could be guaranteed during floods, a new location for the bridge over the Acheron River was selected. A new steel and timber bridge was completed in 1942 which has since been updated with concrete and steel supports to allow heavy vehicles to cross. The bridge was obviously correctly sited as shown below for even in floods



New Acheron Bridge 1960.  
Courtesy Robert Kidd

like this one in 2008, access to the northern part of Acheron was still possible.



2008 Floods.  
Courtesy Andrea Turner

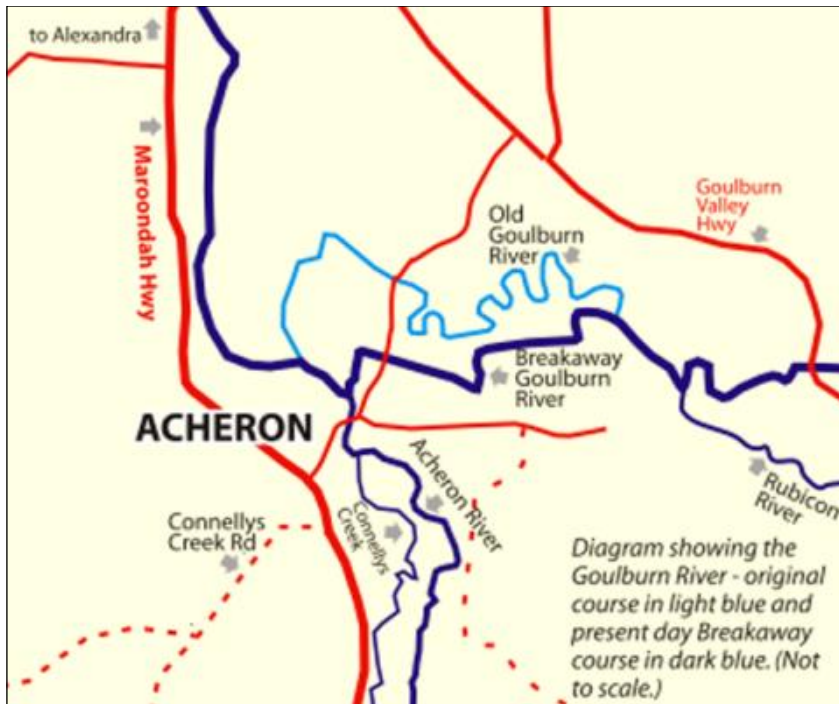
## The Acheron Breakaway Bridge

The Goulburn River formed a breakaway in 1915 and moved large quantities of gravel from one bank to another in 1932.

Bob Rennie remembers:

*"You could hear the banks crash in at night. The whole area sits on a gravel bed and the floodwaters would wash the gravel out. At night it would sound like a thunderstorm. They planted willows in behind to hold the banks..."*

# ACHERON BREAKAWAY BRIDGE



*Map of old and new course of the Goulburn River from Acheron: a history of the district*

## **Saving the bridge**

The upkeep of a wooden bridge is always expensive and over the years moves from the shire were made to replace the bridge with a concrete structure. Local residents fought to keep the Breakaway Bridge in 2001 and in 2010-13. In 2013 the bridge was strengthened with new steel supports, complete with white wooden handrails, wooden running boards and huge timber uprights beneath.



**Breakaway Bridge 2014 looking north.**  
*Courtesy Andrea Turner*

## **CONTRIBUTORS**

---

Bernice Webster  
Rosalie Cumming  
Catherine Boekel  
Bev, Gwen, Caroline and Ross Dick, with Mary Finch  
Fern Hames  
Cathy Olive  
David Gamble  
Ross Coller  
Will Leckey  
Jen Rennie  
Martin Webster

And many other community members including:

Leisa Lees, Ann, Bronwyn and Geoff Dobson; Peter Kerr, Annice Walshe, Bob Rennie, Marian Rennie, Anita Rennie; Jen Rennie, Marie Lee; James Bonsema, Geoff Cookson, John Munday, Allan and Phil Weeks, Pam Sandon, Robin Doble, Jean Wilcox, the Whitfield family (Ray and Joan Whitfield, Janet Brown), Jim Hodgson, Carl Thomas, Uncle Roy Patterson, Daung wurrung Elder, Taggerty; Mary Rasmussen, Sandra Cumming and the Acheron Hall Committee.

## **SOURCES:**

---

Public Records Office of Victoria  
State Library of NSW  
National Library Australia  
Australian War Memorial  
State Library Victoria

## **BOOK DESIGNERS:**

---

Elizabeth Thorp with John Thorp

**'ACHERON a history of the district' is available for sale at [www.acheronhall.com](http://www.acheronhall.com) and available for loan at the Alexandra Library.**



*Acheron History Project*

*Bringing our heritage back to life*

*Lat updated: Tuesday, 15 July 2014*