

A photograph of a narrow, shallow stream flowing through a dense, lush rainforest. The water is dark and reflects the surrounding greenery. The banks are covered in moss and ferns, with many trees having thick, gnarled trunks and exposed roots. The lighting is soft and dappled, creating a serene and natural atmosphere.

RUBICON
LITTLE
RIVER

BRIDGE
RAINFOREST



**NATURE
SERIES**

RUBICON LITTLE RIVER BRIDGE RAINFOREST

CONTRIBUTORS

DELWP

Jamie Flynn
Joshua Hibbert
David & Debbie Hibbert

CONTENTS

INTRODUCTION

TIMELINE

ESPLASH

HISTORIC FACTSHEET

LITTLE RIVER BRIDGE RAINFOREST

Name: Little River Bridge Area
Location: Rubicon State Forest
Managed: DELWP
Elevation: 970 Metres
Start GPS: S37.39103, E145.80883

A small area of cool temperate rainforest rich in Beech Myrtle trees and with the majestic little river running through it. This is one of just a few easily accessible temperate forest sites left in the Rubicon Forest.



Little River Bridge is home to a small lush area of cool temperate rainforest with a modest population of Myrtle Beech trees. Located on Blue Range Road at the Little River Bridge, it is close to Eildon and Alexandra and 15 km from the small rural township of Rubicon. The road between Rubicon and the site is of good grade. The road is also used by logging trucks, so care must be taken at all times. Please also be aware of native animals which are seen frequently along this road.

With over 95 percent of cool temperate rainforests located in Tasmania, this remains as one of just a handful of areas in the Rubicon State Forest that can be driven into and enjoyed as a picnic area. The area is similar to 'The Beeches' located along Lady Talbot Drive near Marysville, however much smaller.

HISTORIC FACTSHEET

LITTLE RIVER BRIDGE RAINFOREST

One of the dominant species in the area is the beautiful Australian native Myrtle Beech, which is beautiful in autumn as its leaves colour and drop to the forest floor creating a layer of colour that is magical to see. Flora and fauna also abound in this small area.



MYRTLE BEECH

Common name:	Myrtle Beech
Kingdom:	Plantae
Order:	Fagales
Family:	Nothofagaceae
Genus:	<i>Lophozonia</i>
Species:	<i>L. cunninghamii</i>



Growth rate:	Slow (around 2 metres per year)
Height:	Up to 55 metres
Trunk:	Up to 2.5 metres diameter
Age:	Up to 350 years
Distribution:	Victoria and Tasmania
Altitude:	700 - 1100 metres
Cultivation:	From seed
Rainfall:	1000 mm - 2500 mm per annum
Frost:	Frost tolerant
Drought:	Mildly tolerant
Fire:	Seeds during fire and will often die from a hot burning fire
Flowers:	May to September
Bark:	Rough scaly bark to smoother bark when older
Bark colour:	Dark brown


An evergreen tree native to Victoria and Tasmania that prefers temperate rainforests. It grows to a height of 55 metres at altitudes from 700 metres to 1100 metres. It prefers high annual rainfalls exceeding 1000 mm per annum.

In Australia, the Myrtle Beech is a protected species and logging is generally restricted in areas with substantial Myrtle Beech populations. While Myrtle Beech are able to withstand moderate temperature bushfires, they are more susceptible to hot burning fires and entire populations have been destroyed in such fires, as the intense heat kills both the tree and seeds. The leaves of the Myrtle Beech are small, growing to just 20 mm. In spring the leaves change colour from green to orange, yellow and reddish tones and fall to the ground creating blankets of colour on the forest floor.

Uses for myrtle beech wood includes: flooring, furniture, panelling, wood veneers, window frames and general construction. It can be steam bent or turned.

TIMELINE

BASIC TIMELINE OF EVENTS



HISTORIC FACTSHEET

TIMELINE

- January 2015** Photographer Jamie Flynn raised this area with us.
- 5 September 2015** Artworkz conducted our first photoshoot of the area.
- 6 September 2015** Artworkz conducted our second photoshoot of the area.
- 16 October 2015** Artworkz commenced work on this factsheet and a brochure.
- 2 December 2015** Artworkz conducted our third photoshoot of the area.
- 11 October 2015** Artworkz published a feature in eSplash138 which included the public release of this Factsheet.
- 18 June 2017** Artworkz conducted our third photoshoot of the area.
- 14 July 2017** Artworkz published a feature in eSplash177.

eSPLASH
MAGAZINE
ARTICLES

ARTICLES PUBLISHED IN THE FREE eSPLASH MAGAZINE

LITTLE RIVER BRIDGE

TEMPERATE RAINFOREST, RUBICON STATE FOREST 2015



Magical Cool Temperate Rainforest

An area of cool temperate rainforest with Myrtle Beech trees and the lovely Little River meandering through it. This is a truly magical spot!



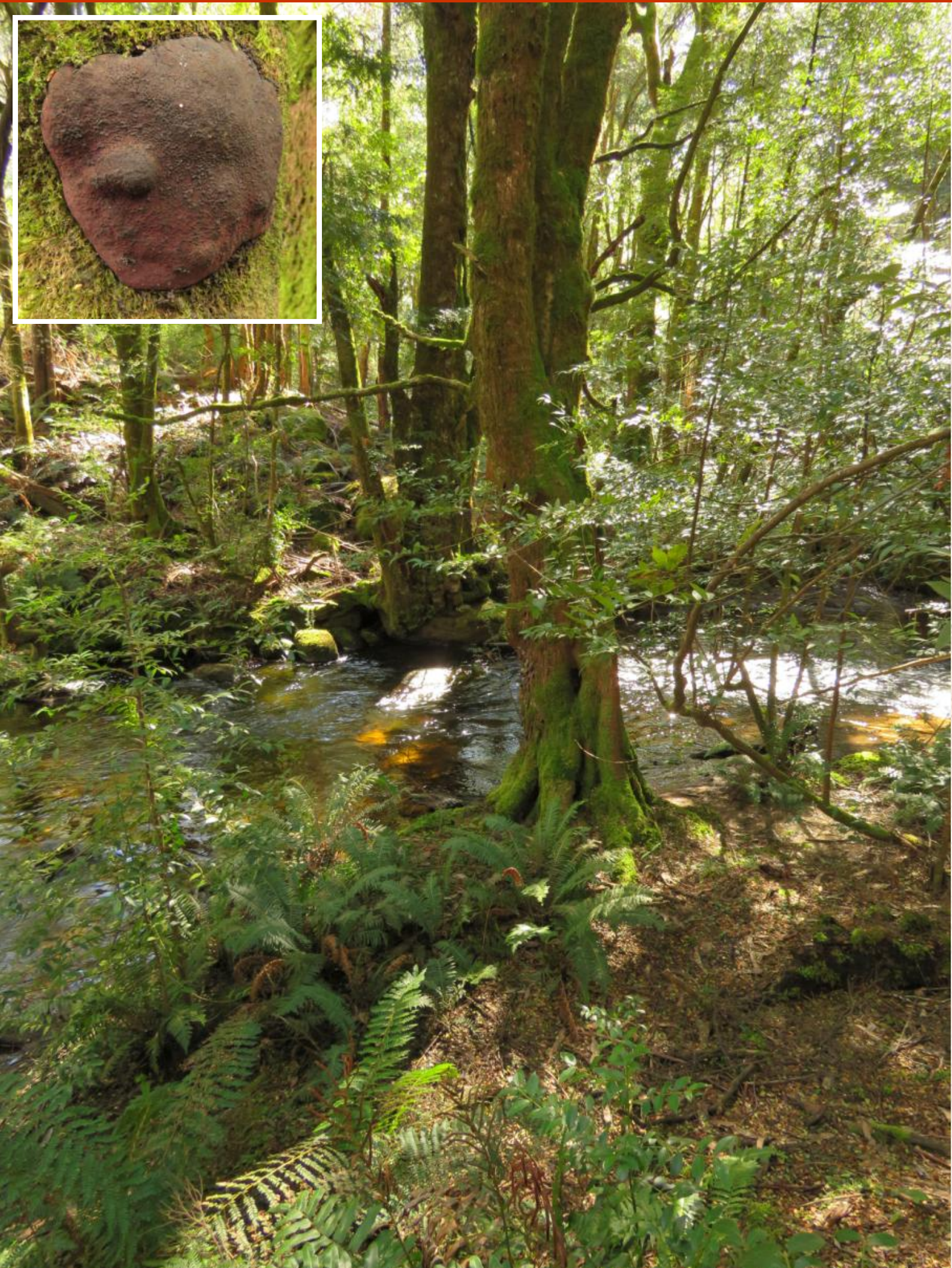




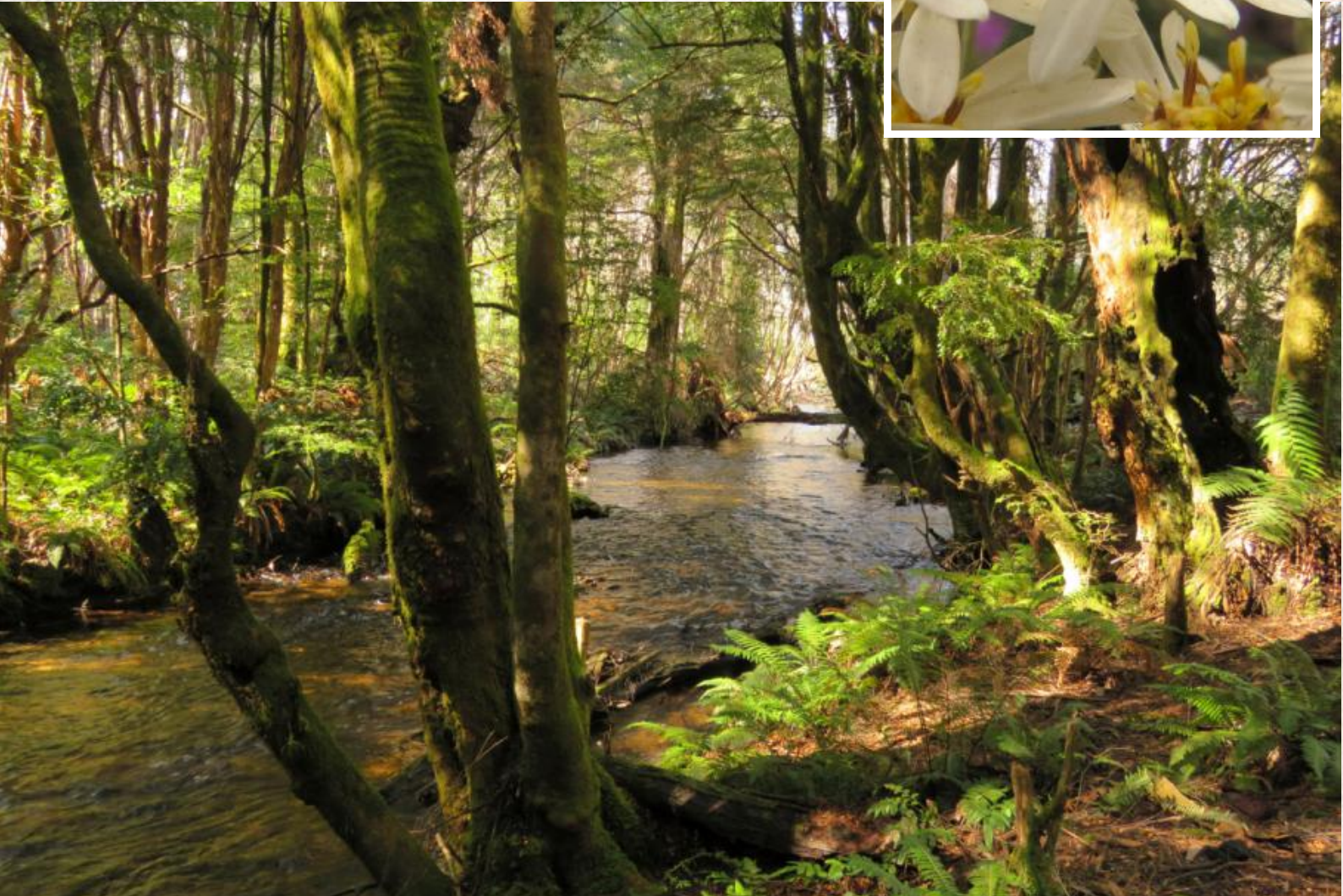
- LITTLE RIVER BRIDGE RAINFOREST -

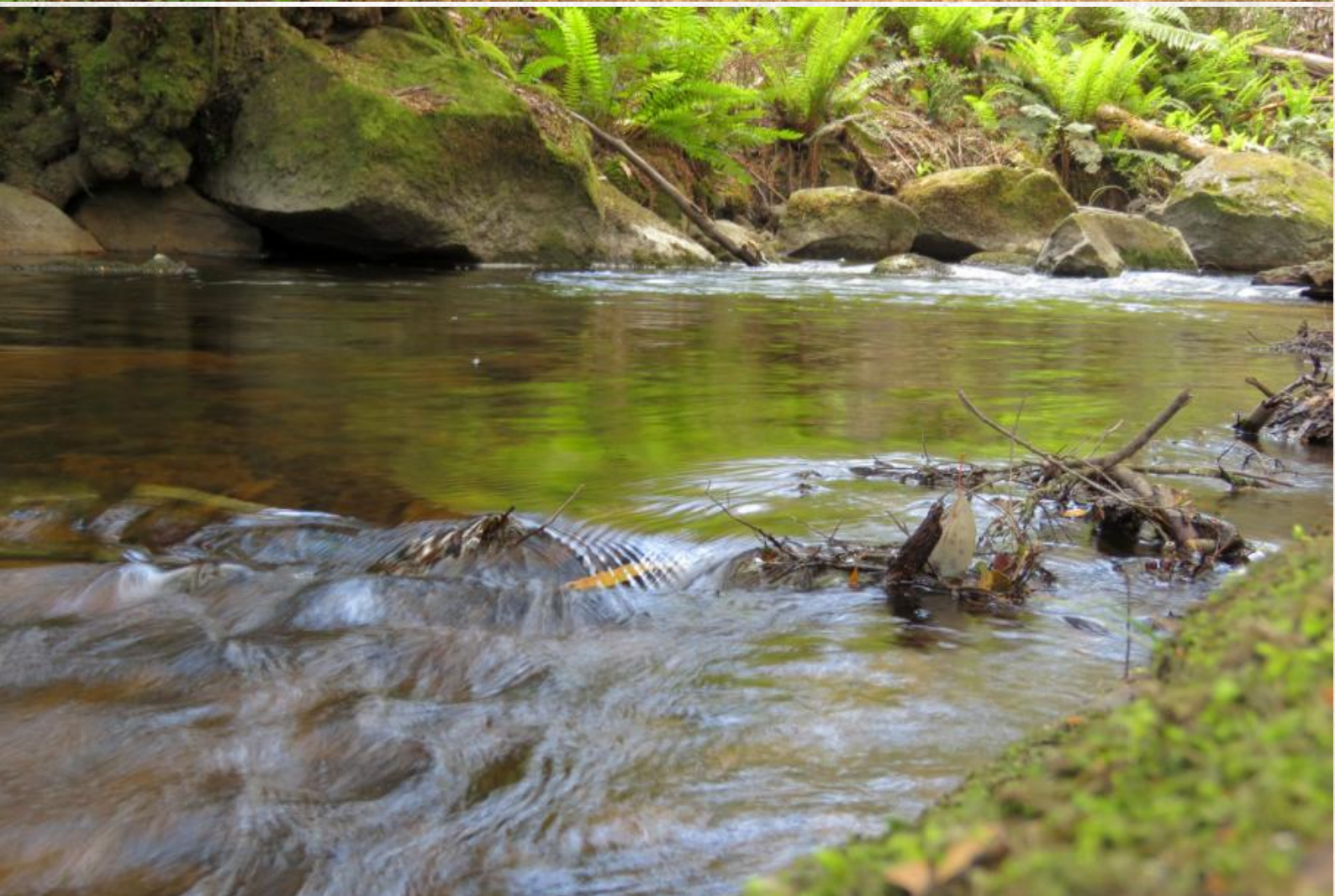
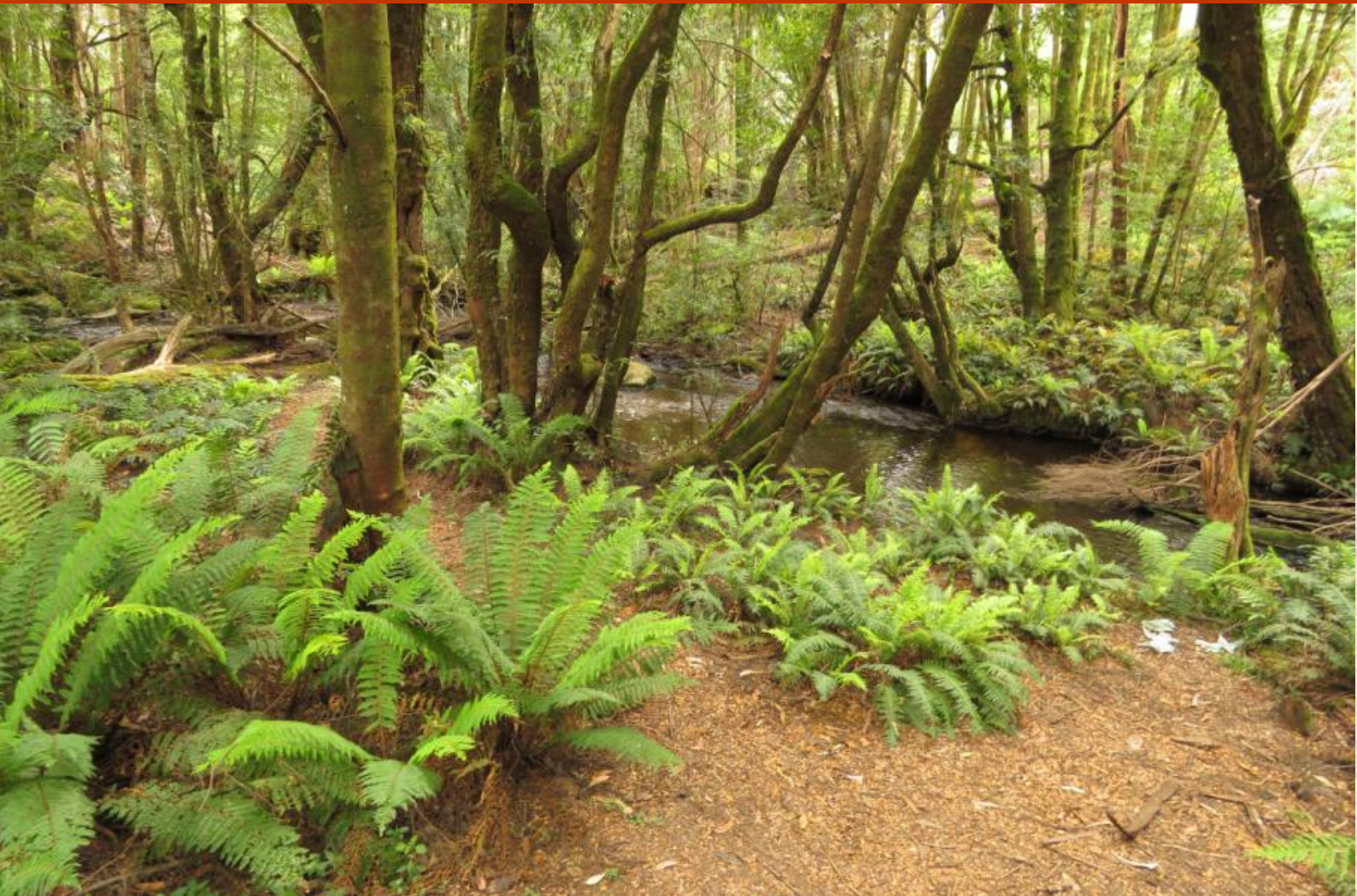


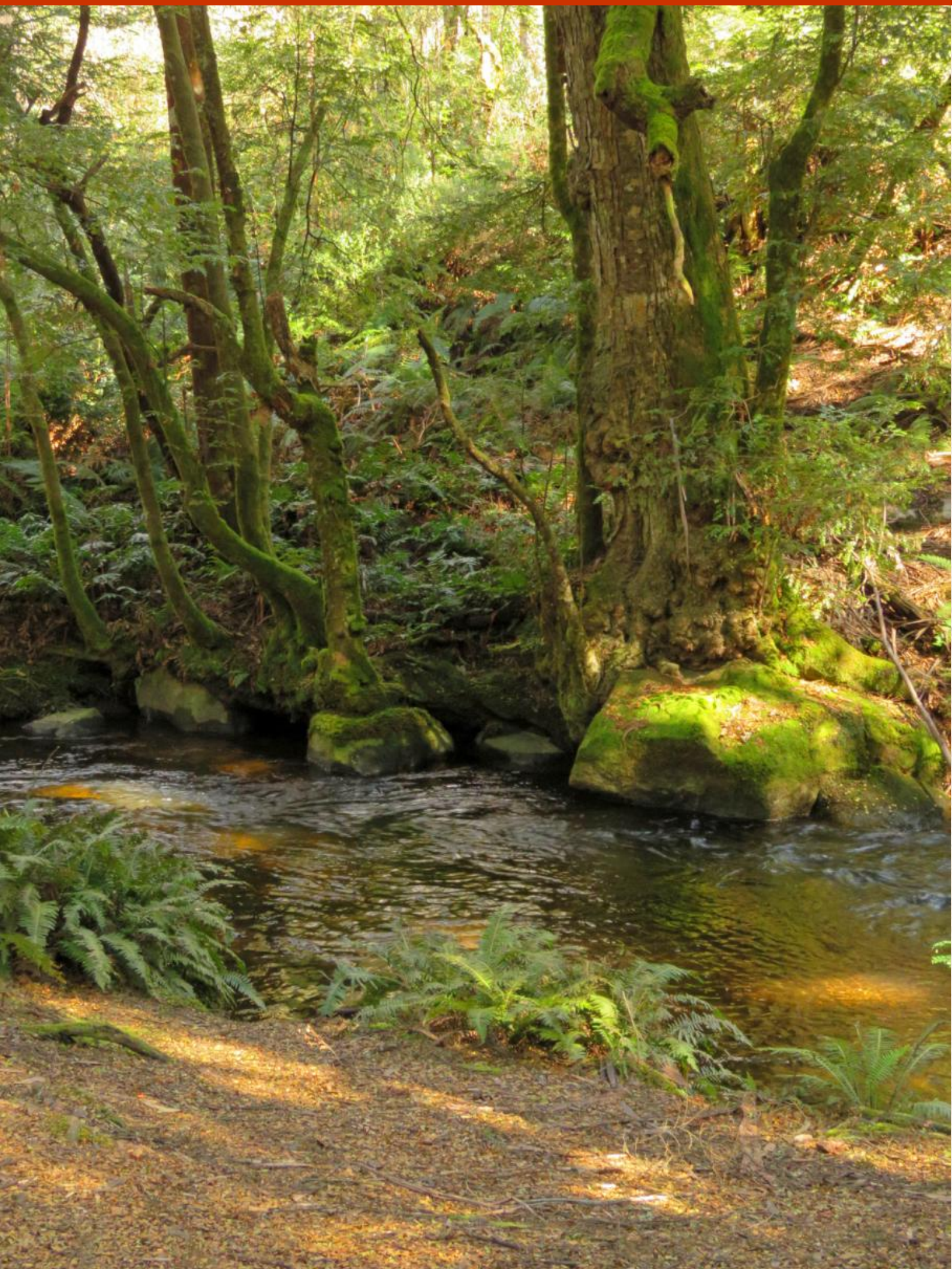
Little River Bridge Visitor Area. There are no facilities at this location











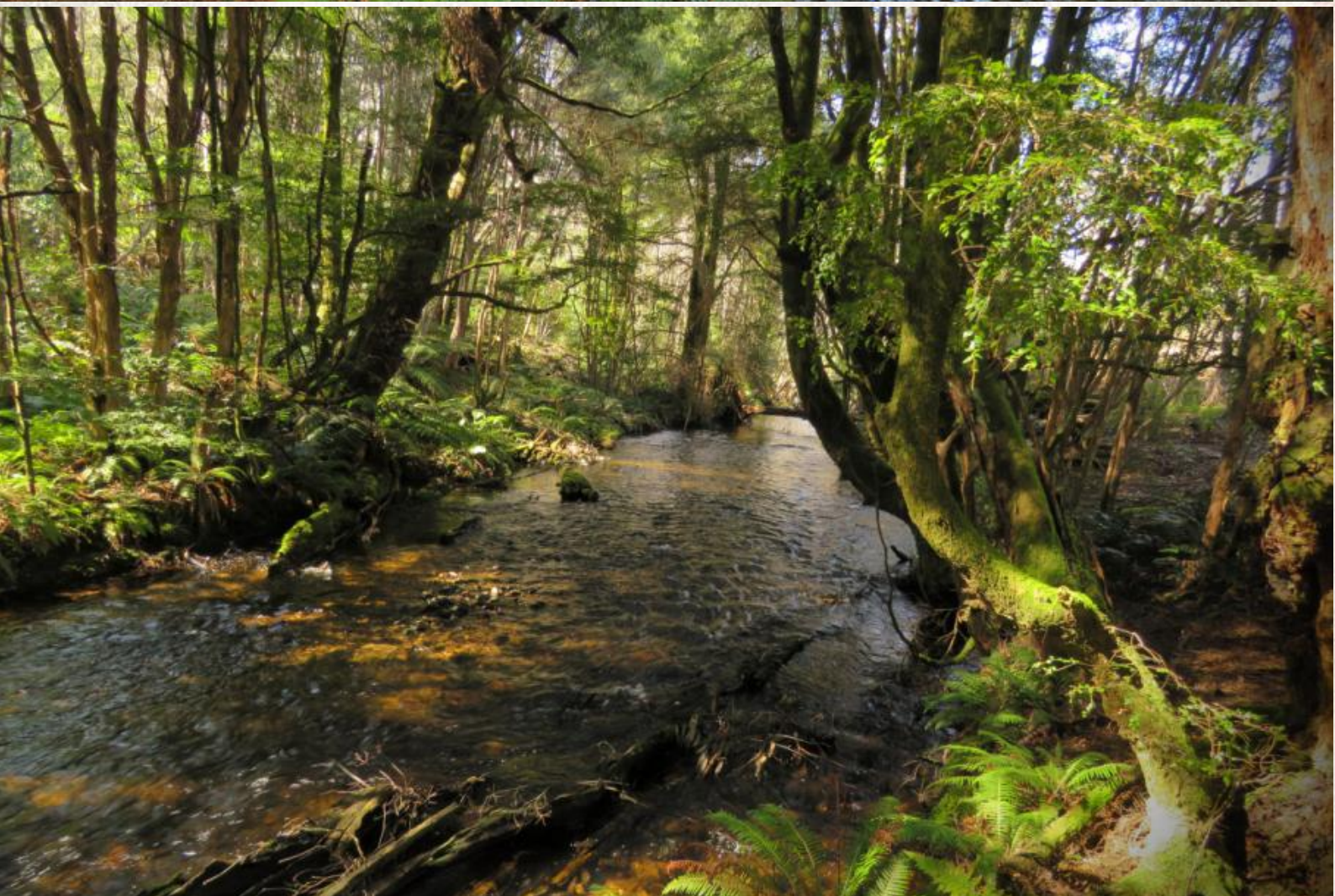
Large granite rocks are covered in moss







- LITTLE RIVER BRIDGE RAINFOREST -



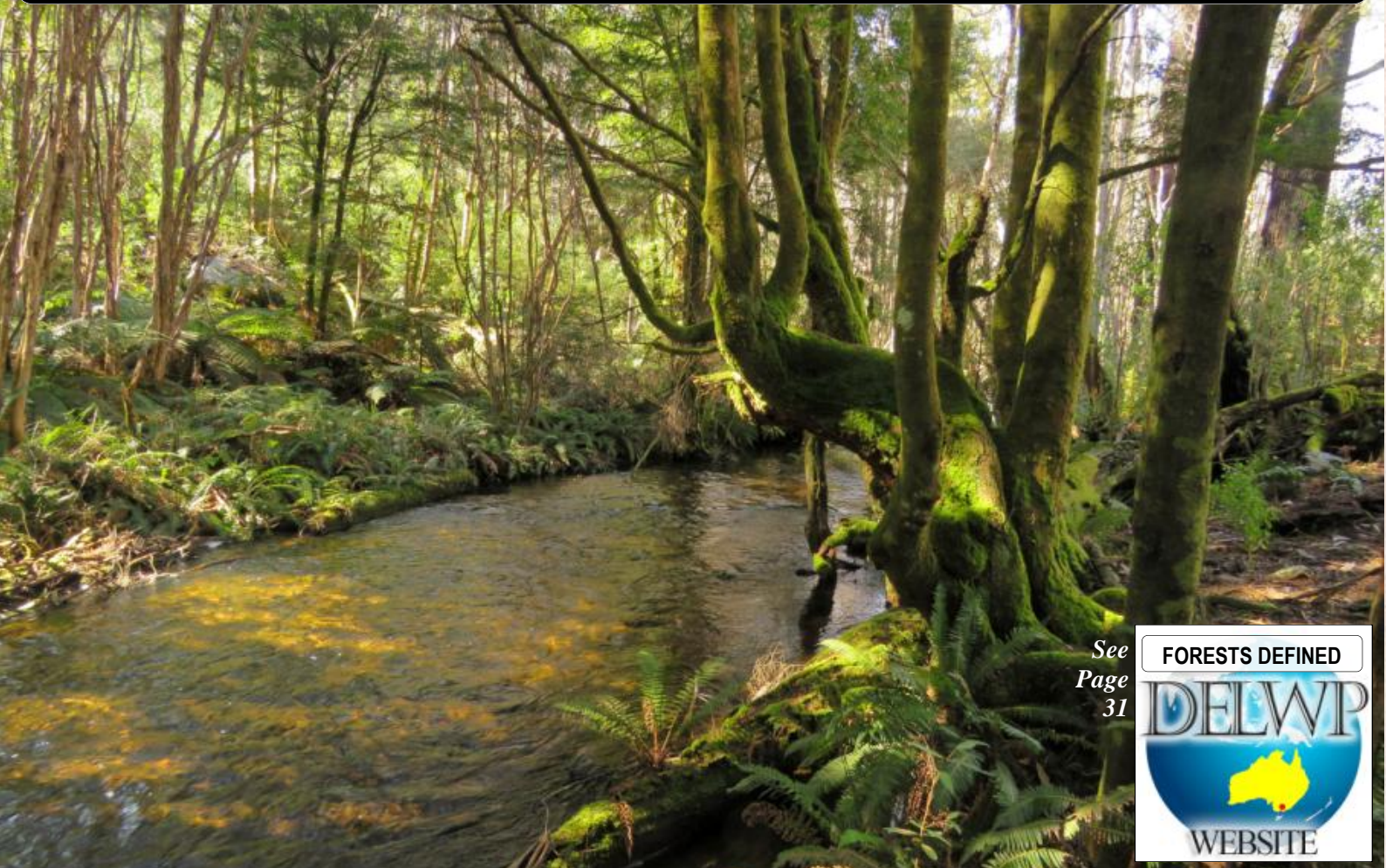
Little River is a beautiful mountain stream



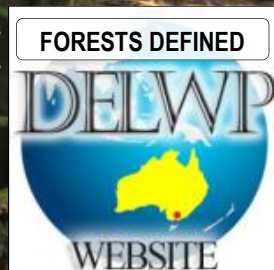




'Cool temperate rainforest is a verdant, cool, dark and damp place where both the trunks of trees and the forest floor are usually festooned with a luxuriant carpet of mosses and lichens'.

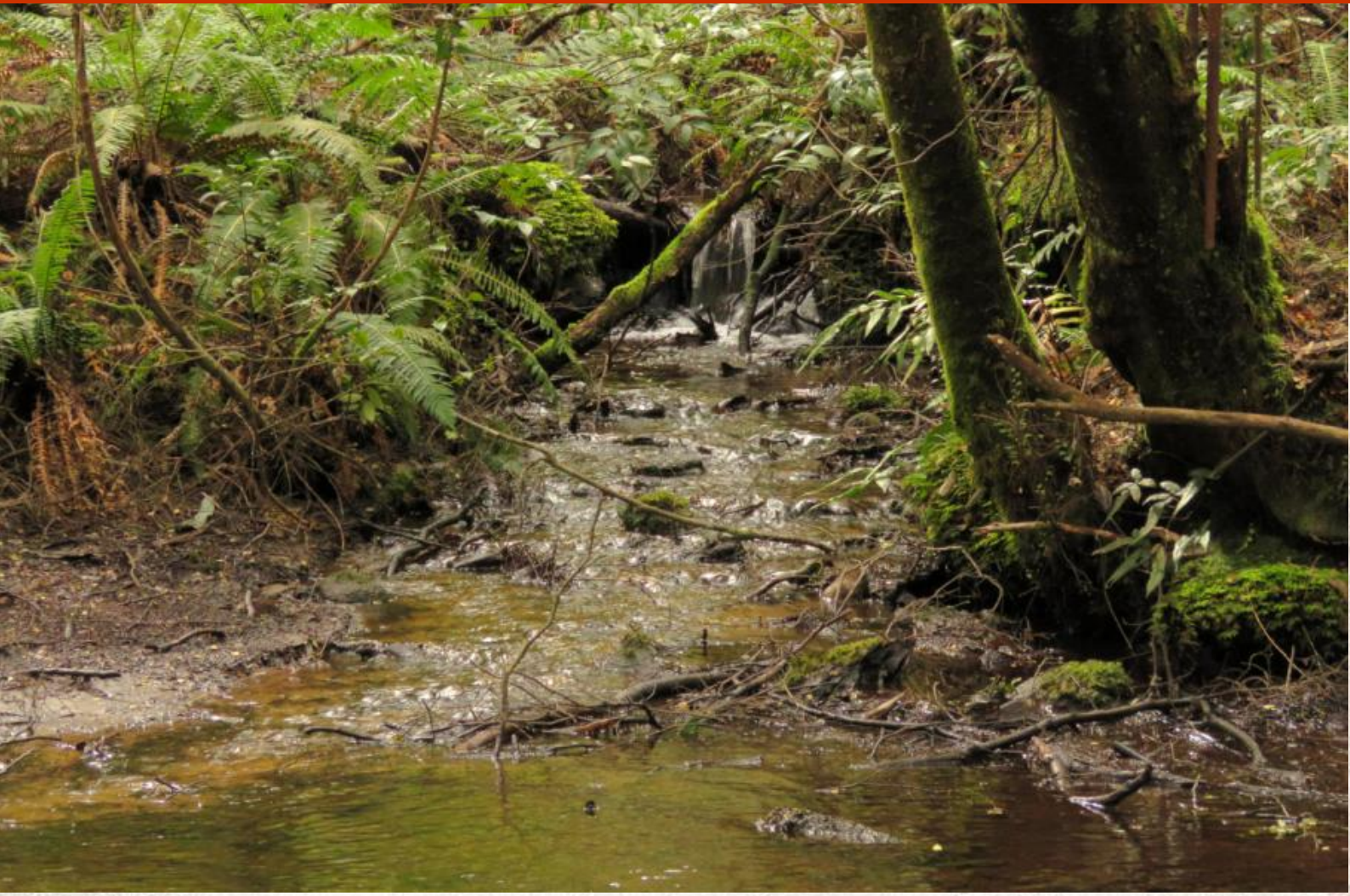


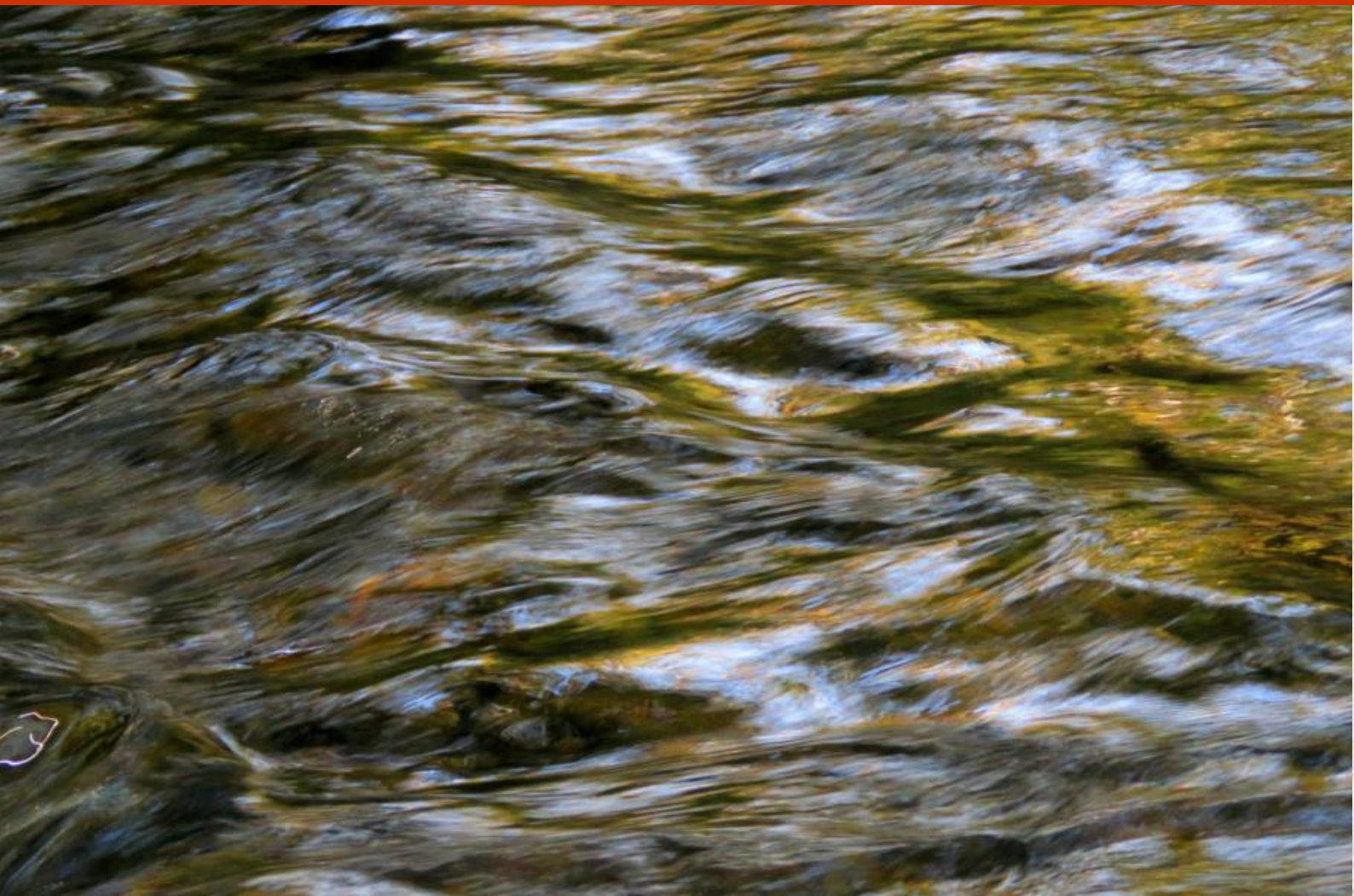
See
Page
31















Myrtle Beech leaves on the forest floor

LITTLE RIVER BRIDGE

RUBICON'S COOL TEMPERATE RAINFOREST IN JUNE 2017
PUBLISHED 14 JULY 2017

DEPARTMENT:
MINISTERS:

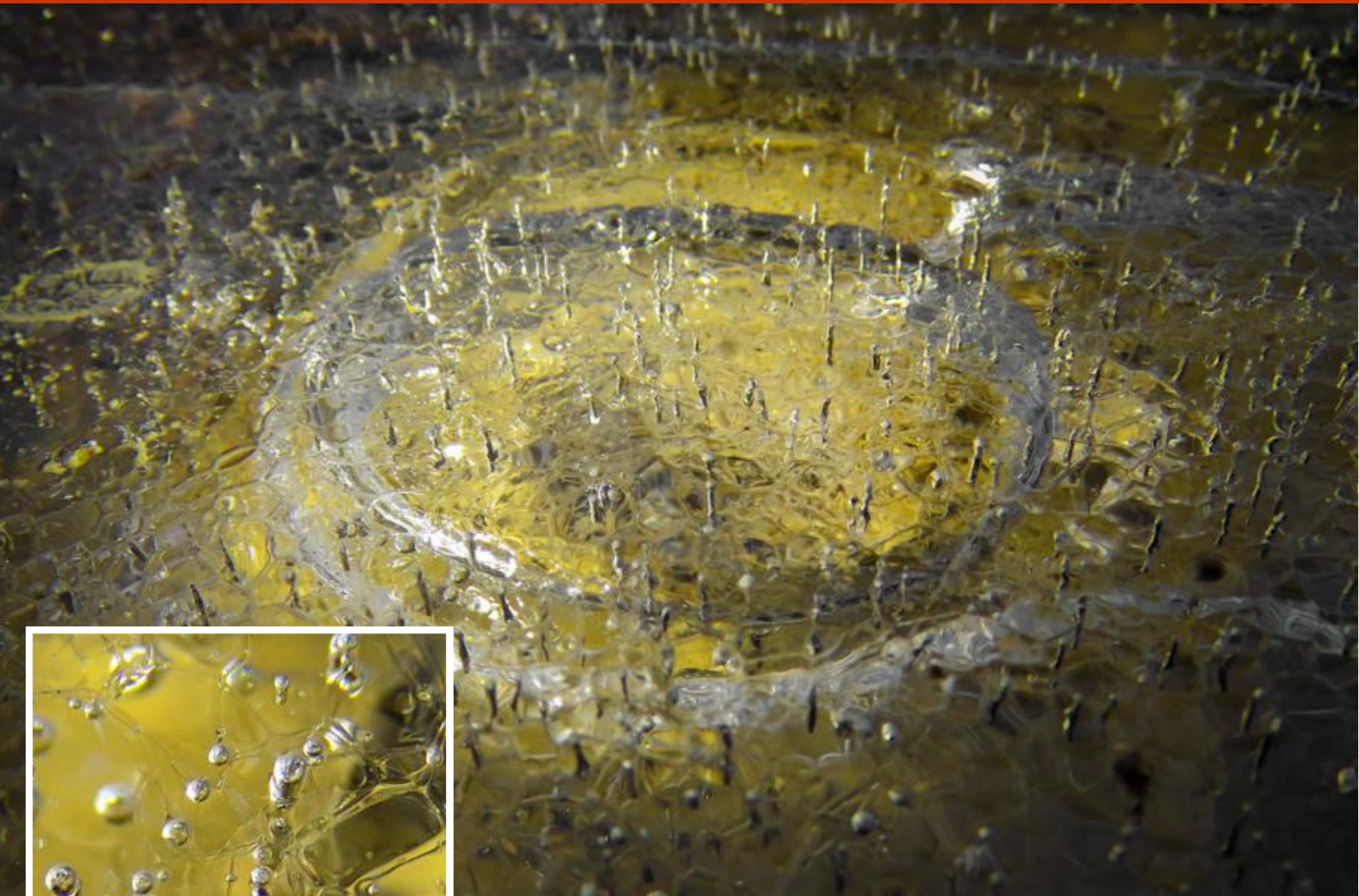
DELWP
LISA NEVILLE
NATALIE HUTCHINS
RICHARD WYNNE

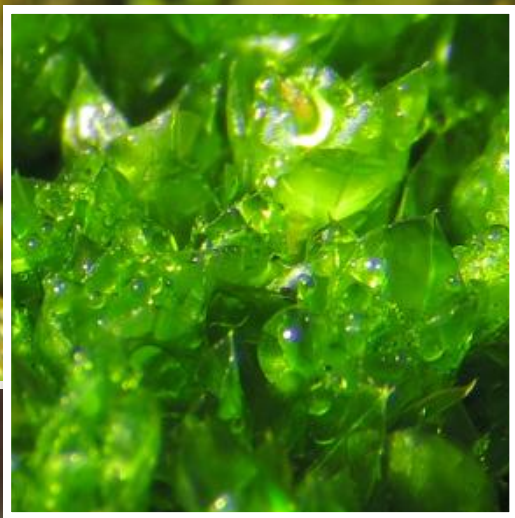


A cool place to look for fungus and ice

Leaving the fog behind, I recently headed into the sunny Rubicon Ranges to a favourite location - the Little River Bridge day area on Blue Range Road. The site is home to a magical Myrtle Beech forest.







Fungi and moss abound at this site











Victoria harbours just five percent of the countries cool temperate rainforest areas, with most being found in Tasmania. The hope is that this Myrtle Beech forest will remain protected, even though it is surrounded by logging coupes.

This lush green forest area is also home to an amazing variety of moss, fungi and lichen, and is one of the most beautiful publically accessible Myrtle Beech forest areas in the Rubicon Ranges. As can be seen in this article (and also in our factsheet), the scenery here is fascinating. This is why it is a favourite location.

Camping is not permitted here, and there are no picnic tables, but this helps keep the area protected. One of its strengths is that it is secluded, while brimming with natural diversity, beauty and uniqueness.

We hope you can visit and witness this fairy-like environment for yourself.





Artworkz

Serving the Community