



ARTIST  
PETER

MATHIESON



## ARTIST SERIES

---

# PETER MATHESON

---

### CONTRIBUTORS

---

This factsheet was produced as a collaboration between Peter and Artworkz and all imagery was used his express permission and in some cases for Artworkz to use.

---

*In memory of a dear friend*



# CONTENTS



HISTORY

TIMELINE

GALLERY

ESPLASH



# HISTORIC FACTSHEET

## HISTORY

**Name:** Peter Matheson  
**Born:** 2 May 1943  
**Died:** 19 February 2013  
**Remembered:** As one of Alexandra's most significant artists

Peter was a significant illustrator and artist who moved to Alexandra where he operated as an artist for many years. He operated an artist's business from Bakers Lane and was a significant contributor and friend to the Artworkz network.

Peter was born in Scotland on 2 May 1943 and moved to Australia as a teenager with his family. He worked in advertising in Melbourne before becoming disillusioned with the industry. This led him to begin working as an artist in his own right.

he was an award winning landscape artist, portrait artist and illustrator, who resided and worked in Alexandra in Central Victoria until his death in 2013 at the Alexandra & District Hospital. Peter worked with oils, pastels, charcoal, pen, pencil, as well as a range of other mediums.

He moved to Alexandra on 4 June 2007 and opened the Alexandra Art Gallery & Supplies (Studio 14) at Shop 2/2 Bakers Lane, Alexandra.







# HISTORIC FACTSHEET

## HISTORY



It was from his new studio that he showcased his wide range of artistic works, ran arts lessons, sold art supplies and showcased other local artists. It was also here that Artworkz first connected with him, forming a deep bond that would last until his passing.

Peter's keen eye for detail and professional understanding of colour, light and shadow—along with his brush and pen style—helped keep him at the top of his career. There was no doubt that his best work was produced in the years leading up to his death.





# HISTORIC FACTSHEET

## HISTORY

Many of his historical works which he produced in the final three years of his life, were in part due to the influence of Artworkz heritage group. Artworkz would often supply Peter (a great friend of Artworkz) with old imagery for him to use as inspiration. Subsequently many of his historical works were based on these images.

His heritage based work helped defined him as a prominent 'Heritage Artist' in his final years and his illustration of a young Charles Long passing through the red gate with his parents in a horse and cart (prior to the establishment of Alexandra) remain arguably his most significant heritage work. Sadly efforts by Artworkz to have the Shire use this significant sketch on signage in the lead up to the opening of the historic 'Red Gate' memorial at the back of the Alexandra Library, fell on deaf ears.



Peter did much to promote artistry locally, and as one of the foremost artists in the district, he was constantly in demand for commission work, demonstrations, as well as teaching and judging at Art Shows. He won numerous awards over this 35 year career,





# HISTORIC FACTSHEET

## HISTORY



though when asked in 2015, he told me he was most proud of his King Valley and Kilmore Art Exhibition wins.

Peter was a supporter of the community where he lived and shared his work and skills widely. He constantly supported the community by donating work for charitable events amongst many other things and was even more giving after the Black Saturday bushfires.

Peter died of cancer during the early hours of Tuesday 19 February 2013. He will be remembered

fondly by those who were close to him, and will remain as one of the most significant and giving artists in Alexandra's history. A letter written in 2011 by Artworkz follows on the next page.





# RECOGNITION

---

**David Hibbert**

**Artworkz**

**29th September 2011**

As the creator of Artworkz, a non-profit group established in the Shire of Murrindindi after the Black Saturday Bushfires, I would highlight how talented, giving and mindful of the community, Peter Matheson is.

As the owner of the only local art gallery of its kind in Alexandra, he has taken constant risks and undertaken many arduous adventures, to ensure that the arts and the principles that make artistry important, are constantly born out in our small community. He has repeatedly allowed us to use his works for free in promotion of the district, even creating works just for us. Peter is mindful of the importance of restoring tourism to our area and is the first to put up his hand to donate art pieces, to help achieve this goal.

Peter's style and skill level are well respected and I am constantly surprised and inspired by his continued development and willingness to try new things as times change.

Peter's unique style, his understanding and the application of solid principles of colour and light, along with his overall professional approach to artistry, put him at the top of his field. He is well respected and highly regarded in the community.

I am honoured to call Peter a friend, as do the entire Artworkz team, and we all wish him the very best with his future endeavours.

**David Hibbert**

**Artworkz**

---



# TIMELINE

BASIC TIMELINE OF EVENTS





# HISTORIC FACTSHEET

## TIMELINE

<b>2 May 1943</b>	Peter was born in Scotland.
<b>1850s</b>	Migrated to Australia as a teenager with his family.
<b>4 June 2007</b>	Moved to Alexandra and commenced working as a local artist.
<b>2011</b>	Artworkz commenced work on this gallery file.
<b>19 February 2013</b>	Peter passed at the Alexandra & District Hospital.
<b>10 August 2018</b>	Transferred Peter's <i>Gallery</i> publication to a <i>Factsheet</i> .



# GALLERY

RELATED IMAGERY





# HISTORIC FACTSHEET

## PASTEL



**THIRSTY**  
**HUGHES CREEK, HIGHLANDS, VICTORIA**

© Copyright Peter Matheson 2011





# HISTORIC FACTSHEET

## PASTEL



**WAIT**  
**HUGHES CREEK, VICTORIA**

© Copyright Peter Matheson 2011





# HISTORIC FACTSHEET

## PASTEL



**QUIET WALK  
BLACK RANGE, VICTORIA**

© Copyright Peter Matheson 2011





# HISTORIC FACTSHEET

## PASTEL



**YOUR BEAUTIFUL  
TUMBARUMBA, NEW SOUTH WALES**

© Copyright Peter Matheson 2011





# HISTORIC FACTSHEET

## PASTEL



**THERE'S ALWAYS ONE  
BLACK RANGE, VICTORIA**

© Copyright Peter Matheson 2011





# HISTORIC FACTSHEET

## PASTEL



### HUGHES CREEK HIGHLANDS, VICTORIA

© Copyright Peter Matheson 2011





# HISTORIC FACTSHEET

## PASTEL



## PANNING AUSTRALIA

© Copyright Peter Matheson 2011





# HISTORIC FACTSHEET

## PASTEL



**WATERING HOLE  
THORNTON, VICTORIA**

© Copyright Peter Matheson 2011





# HISTORIC FACTSHEET

## PASTEL



**CREEK IN CATHKIN  
CATHKIN, VICTORIA**

© Copyright Peter Matheson 2012





# HISTORIC FACTSHEET

## PASTEL



**REDGUM**  
**ALEXANDRA, VICTORIA**

© Copyright Peter Matheson 2012





# HISTORIC FACTSHEET

OIL



**HAND ACROSS FORDS CREEK, MANSFIELD  
VICTORIA, AUSTRALIA**

Based on a photograph taken by J.P. Campbell and from the Rod Falconer Collection

© Copyright Peter Matheson 2011





# HISTORIC FACTSHEET

OIL



**PADDY'S RIVER  
TUMBARUMBA, NEW SOUTH WALES**

© Copyright Peter Matheson 2011





# HISTORIC FACTSHEET

OIL



**GRAZE ALONG THE WAY**  
**ALEXANDRA, VICTORIA**

© Copyright Peter Matheson 2011





# HISTORIC FACTSHEET

OIL



**THORNTON  
VICTORIA 2011**

© Copyright Peter Matheson 2011



# HISTORIC FACTSHEET

OIL



**LATROBE RIVER  
VICTORIA**

© Copyright Peter Matheson 2011





# HISTORIC FACTSHEET

**OIL**



**FIRST  
VICTORIA**

© Copyright Peter Matheson 2011





# HISTORIC FACTSHEET

OIL



**SMALL ROUND-UP  
GOORAM, VICTORIA**

© Copyright Peter Matheson 2011





# HISTORIC FACTSHEET

OIL



**EARLY MOVE  
GUNNEDAH, NEW SOUTH WALES**

© Copyright Peter Matheson 2011





# HISTORIC FACTSHEET

OIL



**PEACEFUL GRAZE  
HIGHLANDS, VICTORIA**

© Copyright Peter Matheson 2011





# HISTORIC FACTSHEET

OIL



**MOVE TO HIGHER GROUND  
MOLESWORTH, VICTORIA**

© Copyright Peter Matheson 2011





# HISTORIC FACTSHEET

OIL



**BOLTE BAY  
LAKE EILDON, VICTORIA**

© Copyright Peter Matheson 2011





# HISTORIC FACTSHEET

## OIL



**LOCH RIVER  
NOOJEE, VICTORIA**

© Copyright Peter Matheson 2011





# HISTORIC FACTSHEET

OIL



**MOUNTAIN STREAM  
VICTORIA**

This painting was donated to the Thornton Primary School  
a few years before the school closed.

© Copyright Peter Matheson 2011





# HISTORIC FACTSHEET

OIL



**THORNTON  
THORNTON, VICTORIA**

© Copyright Peter Matheson 2012





# HISTORIC FACTSHEET

OIL



**ATHLONE COTTAGES SCENE  
ALEXANDRA, VICTORIA**

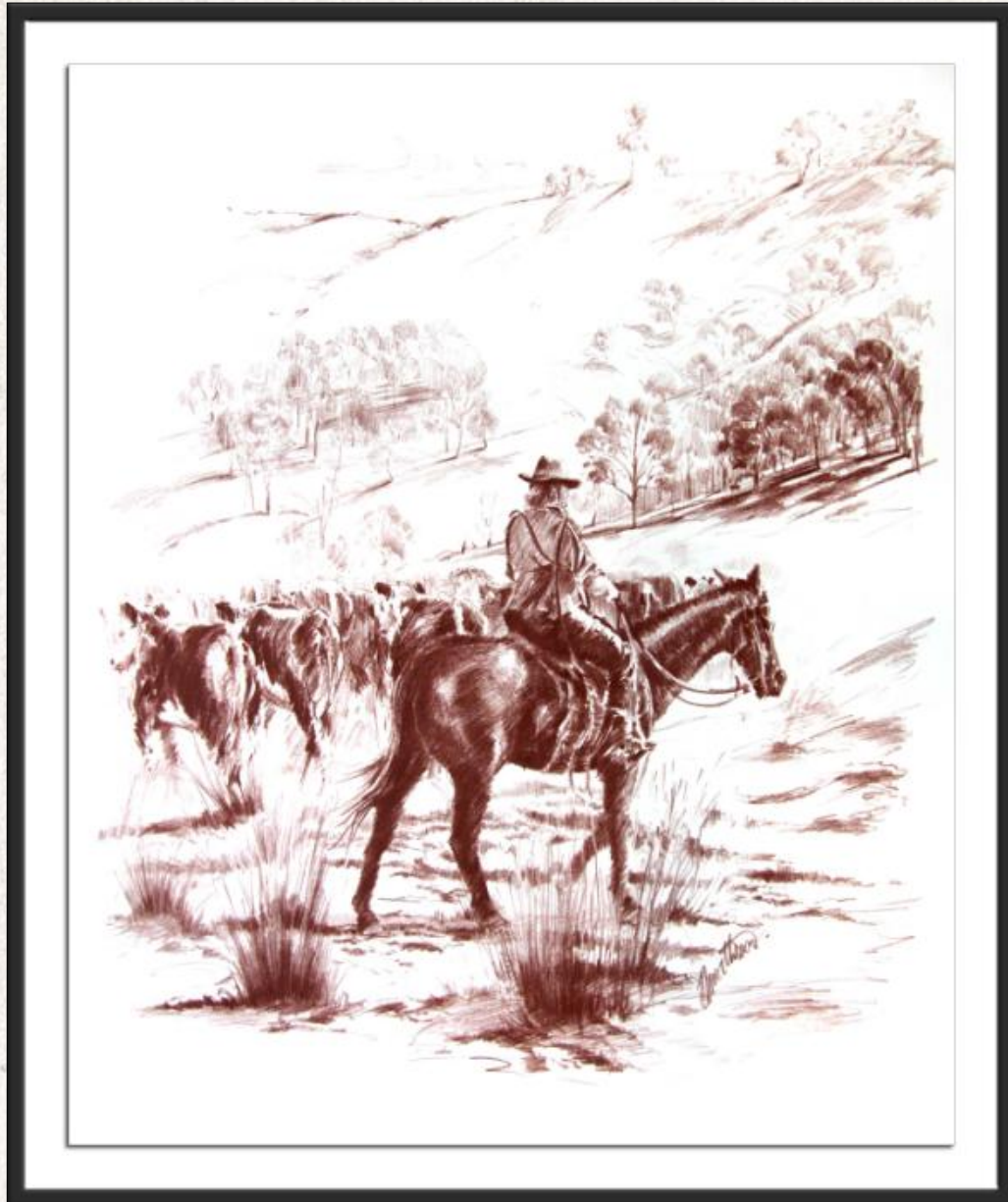
© Copyright Peter Matheson 2012





# HISTORIC FACTSHEET

## AUSTRIAN RED CHALK



### STOCK MOVE MOLESWORTH, VICTORIA

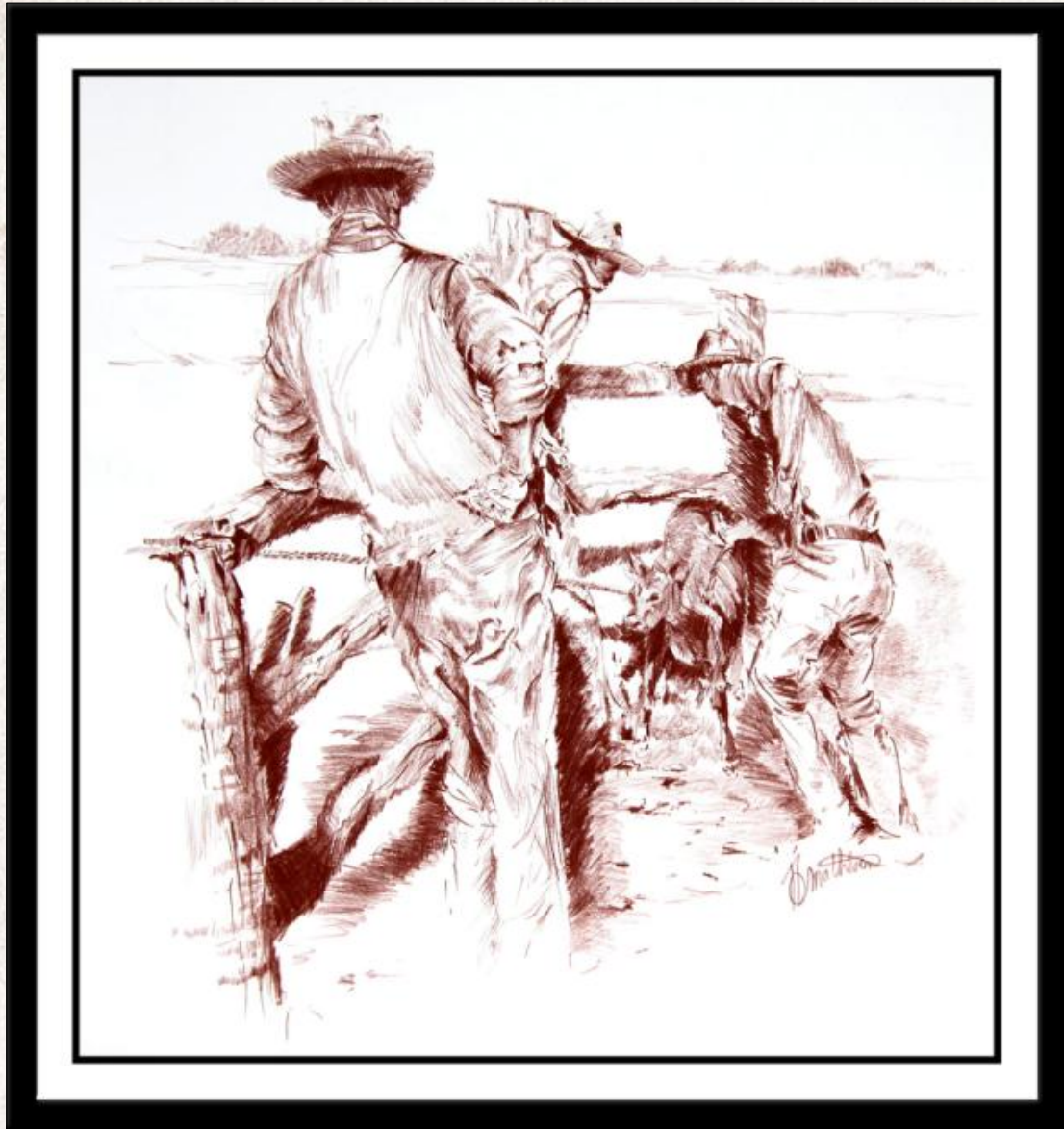
© Copyright Peter Matheson 2011





# HISTORIC FACTSHEET

## AUSTRIAN RED CHALK



### BRANDING QUEENSLAND

© Copyright Peter Matheson 2011





# HISTORIC FACTSHEET

## AUSTRIAN RED CHALK



**YEA RIVER  
GLENBURN, VICTORIA**

© Copyright Peter Matheson 2011





# HISTORIC FACTSHEET

## AUSTRIAN RED CHALK



**GILMORE TREE  
THORNTON, VICTORIA**

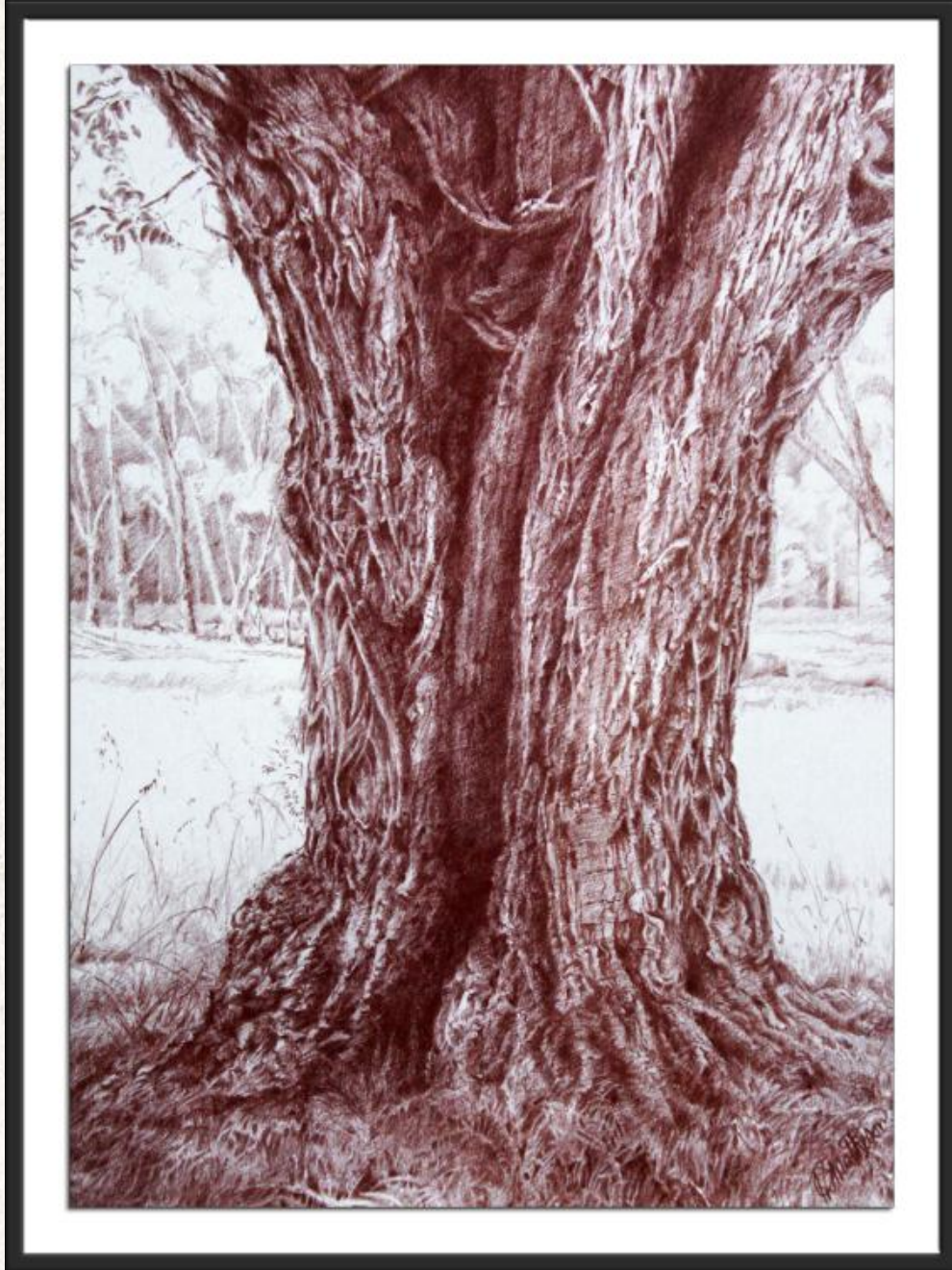
© Copyright Peter Matheson 2011





# HISTORIC FACTSHEET

## AUSTRIAN RED CHALK



**GILMORE ACACIA  
THORNTON, VICTORIA**

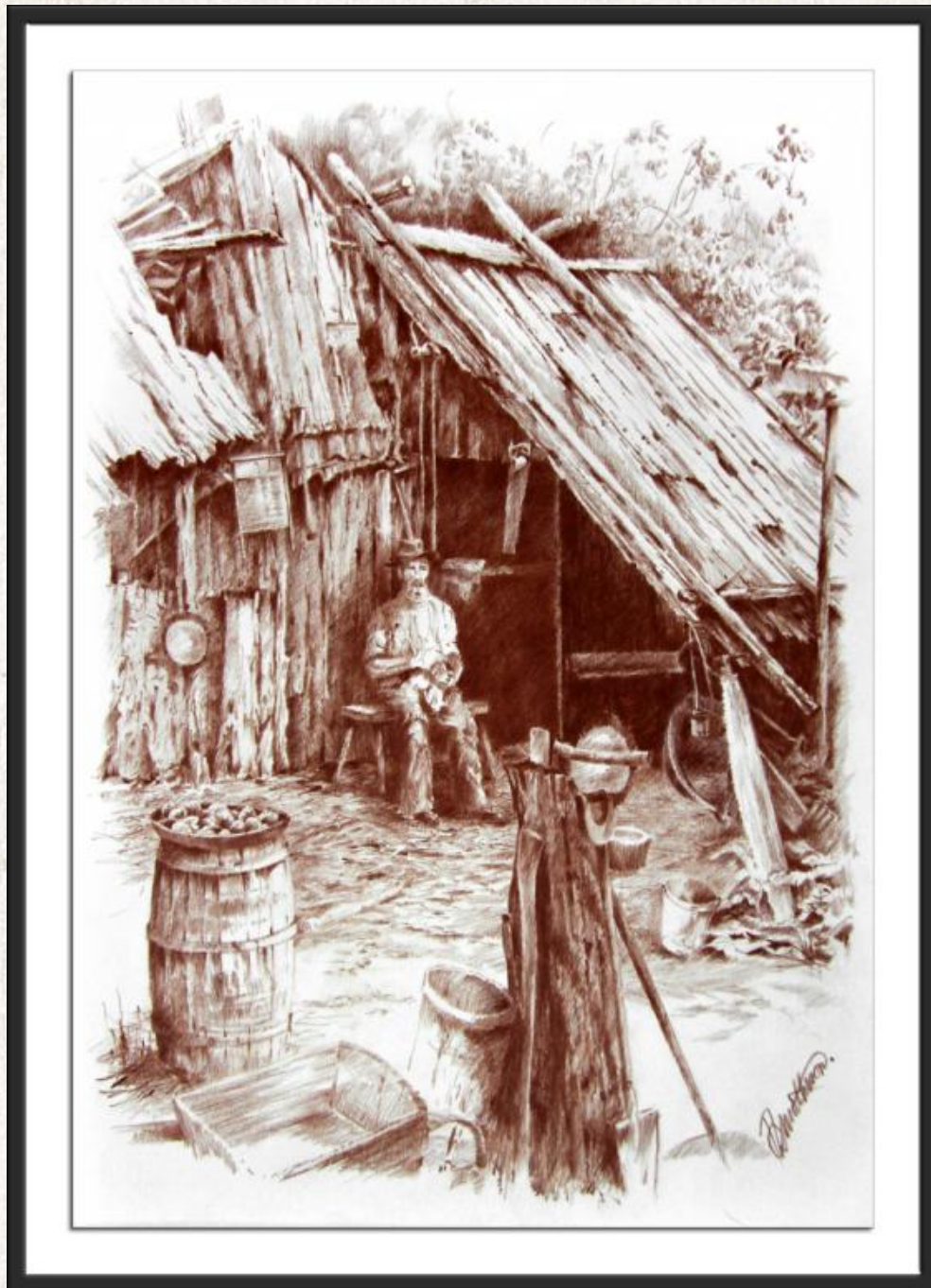
© Copyright Peter Matheson 2011





# HISTORIC FACTSHEET

## AUSTRIAN RED CHALK



### THE SELECTORS LIFE VICTORIA

Reproduction of photograph by N.J. Caire circa 1880.  
© Copyright Peter Matheson 2012





# HISTORIC FACTSHEET

## AUSTRIAN RED CHALK



### EARLY HAY STACKING VICTORIA

Reproduction of local circa 1900  
© Copyright Peter Matheson 2012





# HISTORIC FACTSHEET

## AUSTRIAN RED CHALK



### **BOGGED RIVERINA, NEW SOUTH WALES**

Reproduction of an early 1900s photograph found in a local shop in 2012

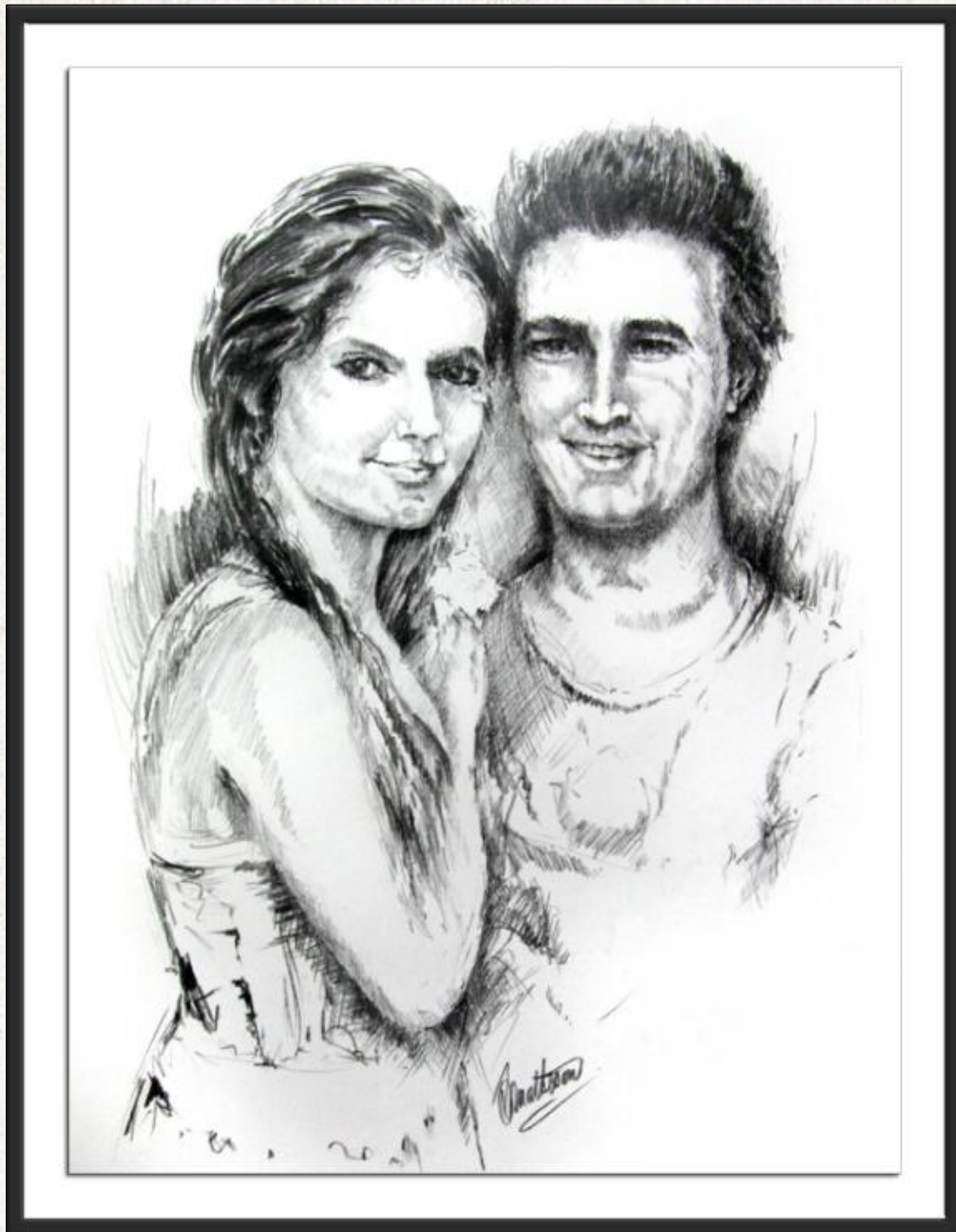
© Copyright Peter Matheson 2012





# HISTORIC FACTSHEET

## CHARCOAL / CARBON



### FRIENDS

© Copyright Peter Matheson 2011





# HISTORIC FACTSHEET

## CHARCOAL / CARBON



**YARRA GLEN TO HEALESVILLE TRAIN  
YARRA GLEN, VICTORIA**

© Copyright Peter Matheson 2011





# HISTORIC FACTSHEET

## CHARCOAL / CARBON



### RED GATE ALEXANDRA, VICTORIA

**'It was about the middle of the Sixties, in the summer of 1865 (I believe) when my father and mother and their two young children, of whom I was one, were driven by a Yankee wagon through the red gate. They had come from Wallan Wallan through Yea.**

Our destination was the busy mining township of Enoch's Point, about twenty miles up the Big River from Darlingford, where it entered the Goulburn....

**As we passed through the gateway after fording the creek, no houses could be seen in any direction. The last - a slab hut with stringy bark roof - was passed about two miles away.**

There was nothing to suggest that we were looking at the site of what is now the central part of a prosperous town, adequately provided with whatever makes for the health and comfort of the inhabitants. We were on fairly level ground, which soon changed to a slope, up which the track led to a ridge in the distance. The land was well timbered and well grazed. McKenzie's sheep shared the herbage with kangaroos and wallabies.'

Extract from the *Victorian Historical Magazine*, 1938.

The article *History of Alexandra* was written by C.R. Long who once attended the Alexandra State School and taught at the Thornton State School.

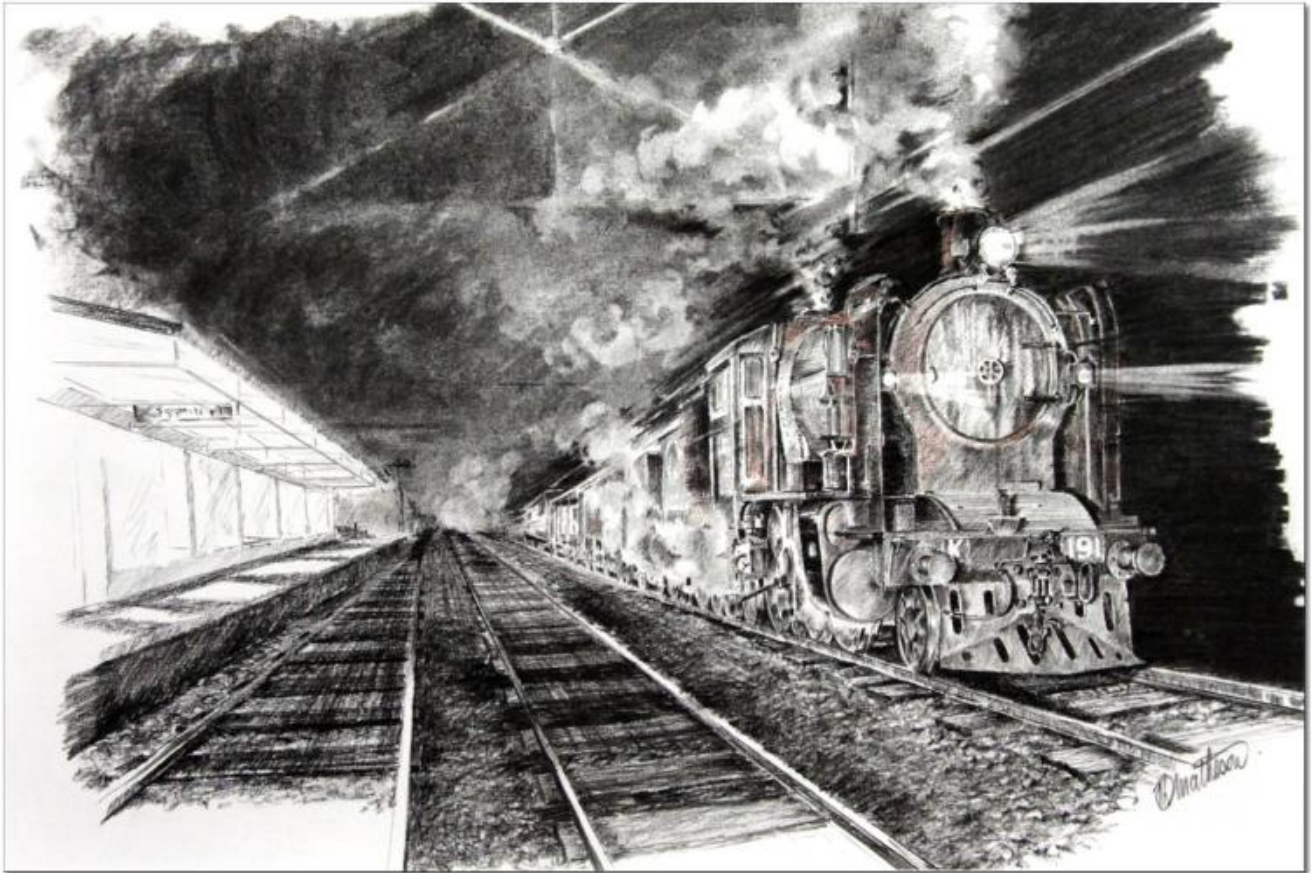
© Copyright Peter Matheson 2011





# HISTORIC FACTSHEET

## CHARCOAL / CARBON



### NIGHT TRAIN HEALESVILLE TO WARBURTON, VICTORIA

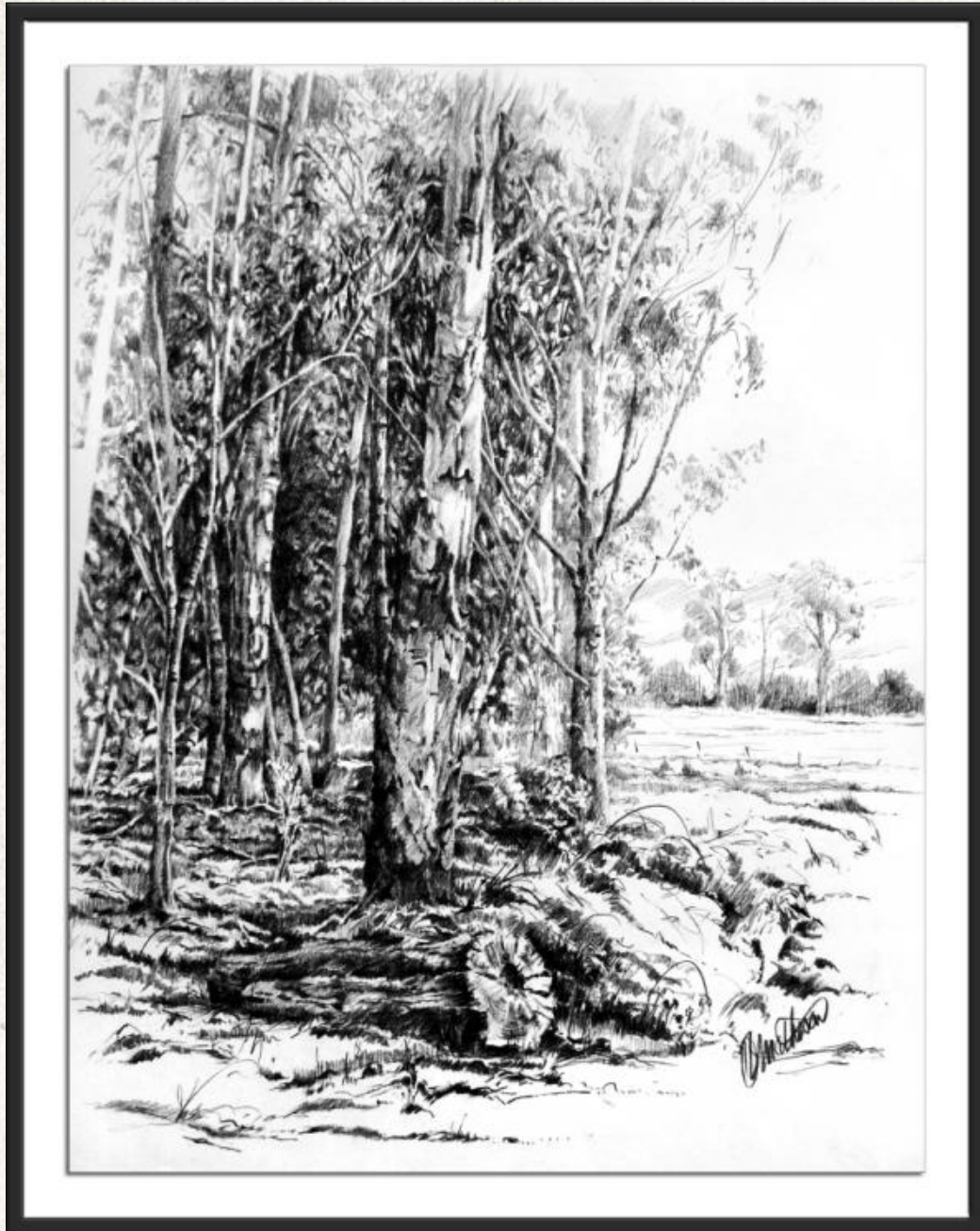
© Copyright Peter Matheson 2011





# HISTORIC FACTSHEET

## CHARCOAL / CARBON



**THORNTON  
THORNTON, VICTORIA**

© Copyright Peter Matheson 2011



# eSPLASH

PAGES FROM ESPLASH EMAGAZINES





# HISTORIC FACTSHEET

## LOCAL MEDIA

CAFÉ COPY  
ONLY

ALEXANDRA'S FIRST TOURISM,  
HISTORY & ARTS MINI MAGAZINE

# ESPLASH<sup>18</sup>

MINI  
RELEASE 1

---

SPONSORED BY: CAFE ALEX 109 GRANT STREET ALEXANDRA 5772 1155

---

FORDING THE U.T. CREEK AND HEADING THROUGH THE RED GATE

© Copyright Peter Matheson of Alexandra Gallery & Art Supplies, 2/2 Bakers Lane, Alexandra



---

AN UNFUNDED & INDEPENDENT PUBLICATION

---





# HISTORIC FACTSHEET

## LOCAL MEDIA

CAFÉ COPY  
ONLY

ALEXANDRA'S FIRST TOURISM,  
HISTORY & ARTS MINI MAGAZINE

# ESPLASH<sup>19</sup>

MINI  
RELEASE 2

SPONSORED BY: CAFE ALEX 109 GRANT STREET ALEXANDRA 5772 1155

### WORKING ON THE FARM

© Peter Matheson of Alexandra Gallery & Art Supplies, 2/2 Bakers Lane, Alexandra  
*This and other drawings available for purchase.*



AN UNFUNDED & INDEPENDENT PUBLICATION





# HISTORIC FACTSHEET

## LOCAL MEDIA

CAFÉ COPY  
ONLY

ALEXANDRA'S FIRST TOURISM,  
HISTORY & ARTS MINI MAGAZINE

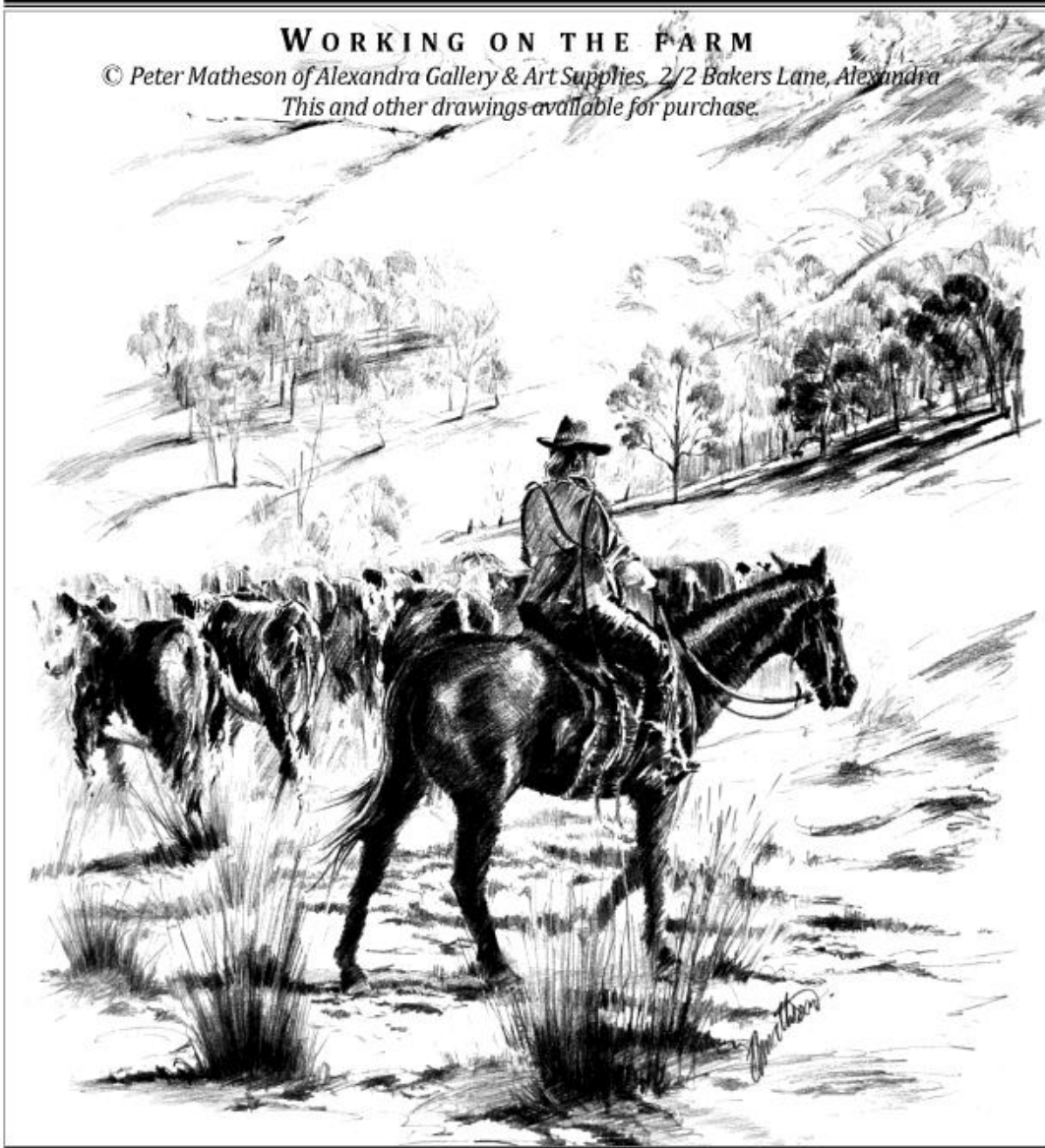
# ESPLASH<sup>20</sup> MINI

RELEASE 3

SPONSORED BY: CAFE ALEX 109 GRANT STREET ALEXANDRA 5772 1155

### WORKING ON THE FARM

© Peter Matheson of Alexandra Gallery & Art Supplies, 2/2 Bakers Lane, Alexandra  
This and other drawings available for purchase.



AN UNFUNDED & INDEPENDENT PUBLICATION





# HISTORIC FACTSHEET

## LOCAL MEDIA

ARTS EMAG      **HISTORY EMAG**      TOURISM EMAG

*The Historic Times*

OUR DISTRICTS FIRST INDEPENDENT ELECTRONIC HISTORY MAGAZINE

DAIRY CAFE CLOSURES

ALEXANDRA BOOK

BROCHURE FOCUS

FORDING THE U.T. CREEK AND HEADING  
THROUGH THE RED GATE

© COPYRIGHT PETER MATHESON 2010

LIN CUMMING  
FACTSHEET

**GOULBURN  
MOUNTAINS  
District**

HISTORIC  
DISPLAY BOARDS

ISSUE 2 - DECEMBER 2010



# INTRODUCING OUR ARTISTS

## PETER MATHESON

© Copyright Peter Matheson



### **RAISING THE QUALITY AND PROFILE OF ARTISTS ACROSS THE DISTRICT**

Peter Matheson is an award winning landscape artist, portrait artist and illustrator, who resides and works in Alexandra in Central Victoria. Peter works in oils, pastels, charcoal, and a range of other mediums.

Peter owns and operates the 'Alexandra Art Gallery and Studio' in Bakers Lane, Alexandra. From here he showcases his many works, runs arts lessons, and exhibits the works of other local artists.

The gallery was opened by Peter on the 4th of June, 2007, and is the only shop of its kind in our district. He has consistently

promoted artistry locally, and is one of the foremost artists in the district. Peter is constantly in demand for commission work, demonstrations, as well as teaching.

Peter has won many awards over this 35 year career, though recently is most proud of his King Valley and Kilmore Art Exhibition wins.

Peter's keen eye for detail, and professional understanding of colour, light and shadow, along with his brush and pen style, have helped keep him at the top of his career.





A big thanks to Peter for being a friend and supporter of Artworkz from our inception.

Peter is also a big supporter of the community, and his charity and giving sets him apart from many other artists.



All works © Copyright Peter Matheson





# PETER MATHESON

Peter Matheson is a professional artist, operating from his gallery located at 2/2 Bakers Lane, Alexandra.

This simple yet amazing sketch was produced with a ball point pen, while recovering in a hospital bed.

Artworkz thank Peter for his sharing spirit and his willingness to allow other artists to be inspired by his creative works.





Peter Matheson is our only local artist, who is producing local historical artworks. This artwork can be purchased (framed) for \$700.00.



Reproduction of the 'Selector's life'. Circa 1880. The original photographer was N. J. Caire. This beautiful drawing, along with many others, are available for viewing and sale at the Alexandra Gallery, located at 2/2 Bakers Lane, Alexandra. Phone: 5772 2879.

*P. Matheson*

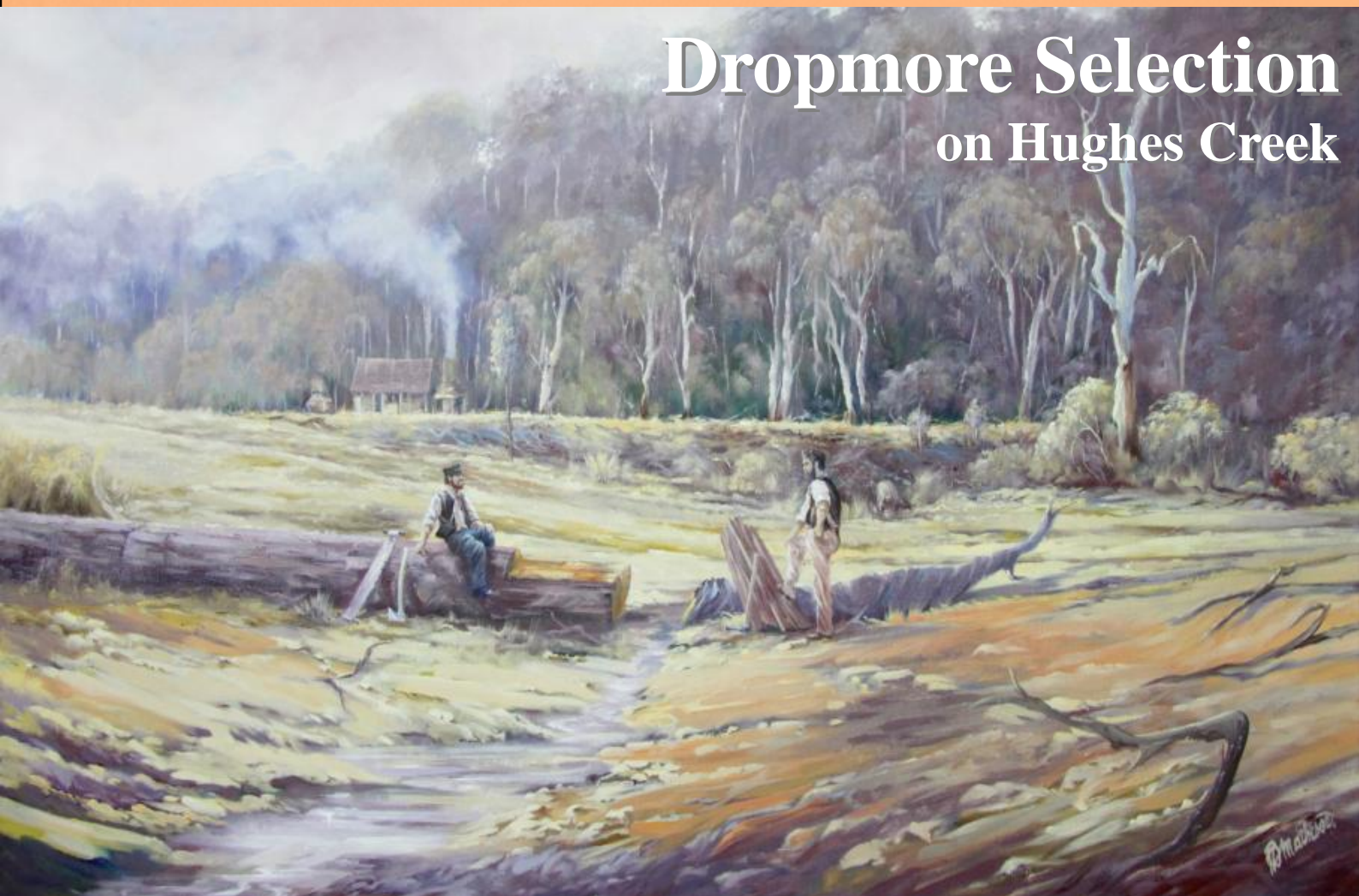
FOR  
SALE



# DISTRICT HERITAGE ART

## PETER MATHESON

### Dropmore Selection on Hughes Creek



Peter Matheson continues to blow us away with his heritage artworks, and we think this is one of his best yet.

This oil painting is based on the photograph (left) taken by Edward Hepburn. It depicts a scene at the selection of Thomas Hepburn at Hughes Creek, Dropmore in the 1890s. Friend David Leckie is noted as sitting on the log.

**ALEXANDRA GALLERY**  
2/2 Bakers Lane, Alexandra  
5772 2879 or 0437 952 552

*Painting © Peter Matheson 2012  
Image courtesy State Library Victoria.*





*Artworkz*

*Serving the Community*