

## 1908 RAILWAY STATION



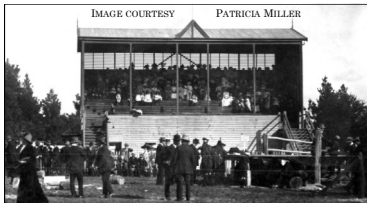
### Station Street

Now the 'Alexandra Timber Tramway and Museum', it represents two rail systems (the timber tramway and main line) that were central to our development. The Museum operates timber steam engines, offering tourists rides.

## OVAL GRAND STAND

### Alexandra Football Oval

The old Grandstand at the Alexandra Oval has long since gone, though there are those that still remember its and would enjoy climbing the steps behind the south goal posts. Built in 1905, it survived until the late 1900s when it was demolished due to its poor state.



## LUCKY MINE LOOKOUT

### Refer Lookout Brochure

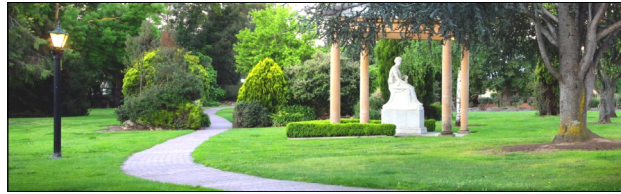
Lucky Mine Lookout overlooks Alexandra, which was once a bed of mining activity. Mining has long ceased, though there are mullock heaps on the hillsides around Lucky Mine Lookout.

## SABELBERGS STAMPERS

### Leckie Park Bowling Club

The Sabelberg Stamper consisted of 15 stampers operating along the northern side of the UT creek - where the bowling green now stands. At one point the stampers operated 24 hours a day, 7 days a week. Stampers were used to crush rock to find gold. There is no evidence of the stamper left.

## PRINCESS ALEXANDRA



### Jack Shiel Garden, Perkins Street

Alexandra is named after Princess Alexandra of Denmark, the Queen Consort of England during 1901 to 1910. She married Crown Prince Edward at the St George Chapel, Windsor Castle in 1863. She sits proudly in the Jack Shiel Garden.

## THE RED GATE

### Back of the Library on Perkins Street

The Red Gate is a reminder of Alexandra's first name 'Redgate Diggings'. It was named this after the gold diggings that were based along our the area of the gate. The new Red Gate built in 2010 stands as a reminder of days past.



## ARTWORKZ TOURISM WEBSITE

[www.esplash.me](http://www.esplash.me)

Visit our website for local Visitor Information Centres.

Brochures have been produced by passionate volunteers to help promote our District.

*Disclaimer: The authors have taken care to ensure this publication is correct, though please be aware that errors and omissions do occur.*

Brochure 017

# ALEXANDRA

## HISTORIC STRUCTURES



*Shadowed by over 30 Mountains and  
on the banks of the beautiful Goulburn River  
and Lake Eildon. This is our playground!*

### 1860c DOVE COTTAGE

[West end of Leckie Park along the UT Creek](#)

Although it is not thought to be the original structure, Dove cottage is still based strongly upon the old style of miners huts in the district during the 1800s and early 1900s.

It is of very simple construction made for easy building and maintenance, while adequately meeting the miners simple needs of that time.



### 1868 COMMERCIAL HOTEL

[65 Grant Street](#)

Established in 1868, the Commercial Hotel was trading during the depression years of the late 1800s. Today it is one of the central Hotels and a preferred drinking hole for many locals and visitors. The local Darmody family was linked to the property from 1928 through to 1985.

### 1878 POST OFFICE

[Corner of Downey and Webster Streets](#)

The Post Office holds the title of being the first Public Building constructed in Alexandra. It was built by James Kyler. The adjoining Courthouse was built by builder Thomas Carison who also built the Alexandra Shire Hall. Both structures are now Heritage listed. The Post Office continues to be used for its original purpose whilst the Courthouse now houses an Adult Education Centre (CEACA).



### 1881 SHIRE HALL



[Perkins Street opposite Jack Shiel Garden](#)

The Shire Hall was built by Thomas Carison for just over £2,200.00. It was the meeting place for the first Shire Councillors and the office for the Shire Secretary and Engineer. It functioned as a hall and central gathering place for the district. The building narrowly avoided demolition in 1976 by the shire after a strong public backlash.

### 1883 LIBRARY



[Corner Grant & Perkins Street](#)

The Alexandra Library was constructed in 1883 as a Mechanics Institute, with extensions being added in 1892. Today the Library continues to be used as a public library. A further extension in 1983 saw the floor space double allowing for greater benefits for the community, including computers, couches and study tables.

### 1889 ANZ BANK

[93 Grant Street](#)

Originally named the Union Bank of Australia, It was the first financial institution in Alexandra and housed gold bought from the local gold miners. The two story building is made from hand made local bricks and has a detailed facia. The building is now classified by the National Trust.

### 1892 BUTTER FACTORY

[East end of Downey Street at the bottom of the hill](#)

As the gold mining industry drew to an end, the local dairy industry strengthened and becoming a large local employer of men. Farming families relied heavily upon the income it created during hard times. It finally closed in 1974 due to strong competition from other markets.

### 1900s POLICE RESIDENCE

[Bon Street, behind the Police station](#)

The old police residence was constructed for local police officers. Built from local bricks, the building, stables and lockup were constructed in timber. The current police station at the front of the residence was built on the same land where the original 1867 station stood.

### 1903 ALEXANDRA HOTEL

[Corner Grant & Downey Street](#)

The Alexandra Hotel was the first local building to offer a reading room as an early library. It also was the meeting place for the early roads board. The building is a two storey structure made from local bricks and still operates as a hotel to this day.

### 1907 NATIONAL BANK

[67 Grant Street](#)

The first stone was laid by Miss C.M. Payne in February 13th 1907. Now a gift shop, the building is built on the same land as "Brigg's Beehive Stores", which were established in 1867.