



Perfect Cure Creek Nature Walk is located on the west bank of Collier Bay (Fraser Block) Lake Eildon National Park in Central Victoria.

The walk starts from the gravel carpark area 200 metres past Devil Cove Camp Area (where the road crosses the Perfect Cure Creek). The walk track is a 1.5 km good grade loop walk that takes you through beautiful bushland. Flora and fauna abound and there are areas of historical value dating back to the gold mining days of the 1800s.

Two undercover Day Visitor Areas with BBQ facilities are located nearby (Forsyth and Herb Fitzroy). Candlebark Camping Area also has an undercover BBQ area, however the site is only open during peak periods.

The walk takes around an hour and is suitable for families. It is also popular as a night walk under torch light where nocturnal wildlife is more visible.

Rangers patrol the camping area regularly.

## FEATURES

- Beautiful bush setting
- Well formed track
- Gold mining relics
- Interpretive signage
- Lovely small bridges
- Flora and fauna abound
- Camping nearby
- Seats along the walk
- Close to Forsyth Day Visitor Area
- Close to Herb Fitzroy Day Visitor Area
- 20 minutes from Alexandra
- 25 minutes from Eildon
- Multiple bush walking tracks

*Please respect the rights of others and please take your rubbish home with you and recycle. Always be aware of snakes and do not feed the native animals. Children must be supervised around water at all times. Always let someone know of your travel plans, when venturing into isolated areas. Fires can only be lit in provided fireplaces. No pets are allowed.*

**Camping fees payable at [www.parkweb.vic.gov.au](http://www.parkweb.vic.gov.au)**

**or phone 131 963 7days 9am to 5pm.**

### ARTWORKZ TOURISM WEBSITE

[www.esplash.me](http://www.esplash.me)

Visit our website for local Visitor Information Centres.

Brochures have been produced by passionate volunteers to help promote our District.

*Disclaimer: The authors have taken care to ensure this publication is correct, though please be aware that errors and omissions do occur.*

Brochure 181

# LAKE EILDON NP

## FRASER BLOCK

## PERFECT CURE CREEK

## NATURE WALK

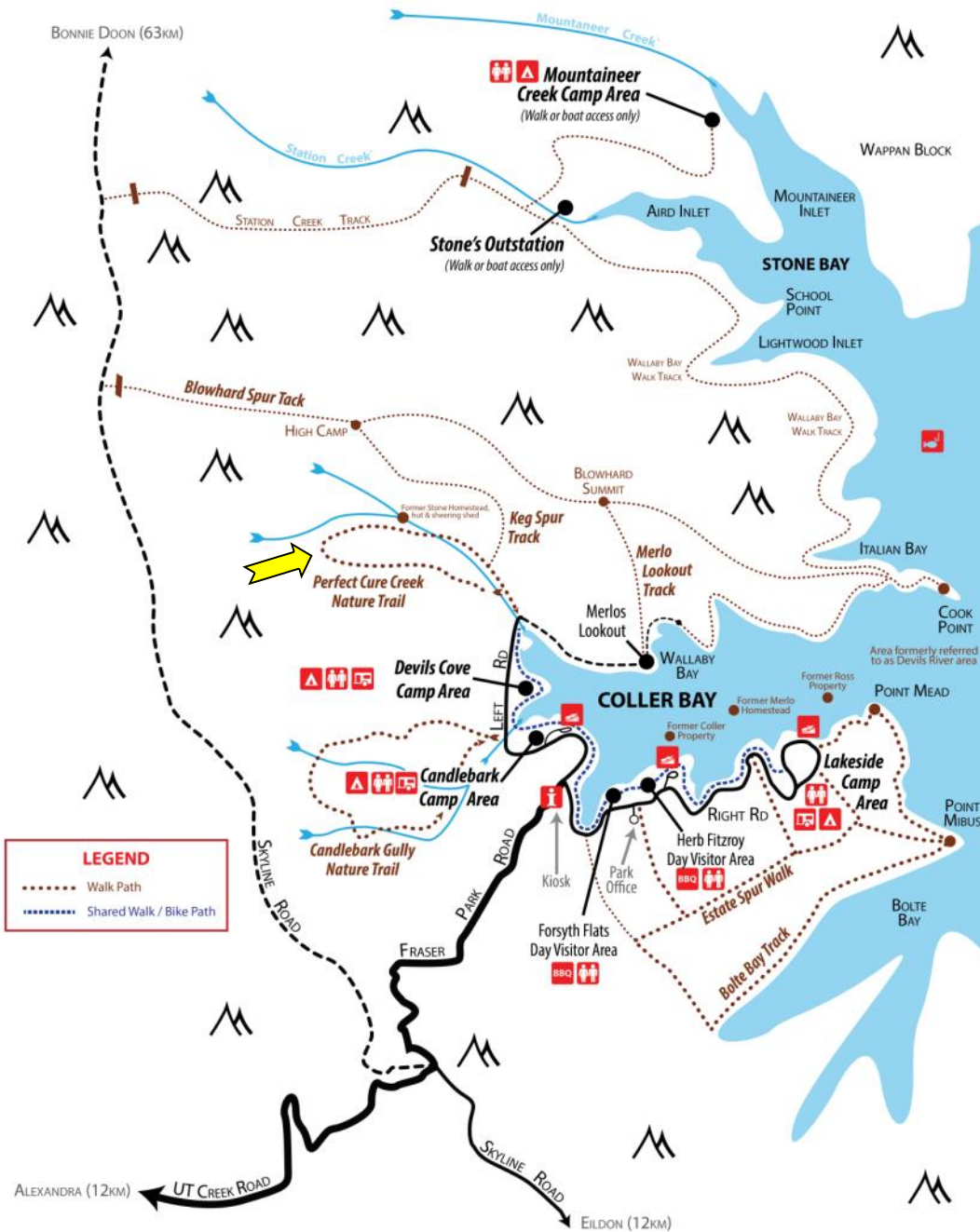


*Shadowed by over 30 Mountains and on the banks of the beautiful Goulburn River and Lake Eildon. This is our playground!*

# LAKE EILDON

## NATIONAL PARK

MAP © COPYRIGHT 2010 DAVID HIBBERT  
MAP NOT TO SCALE  
VISITOR INFORMATION CENTRE 5772 1100

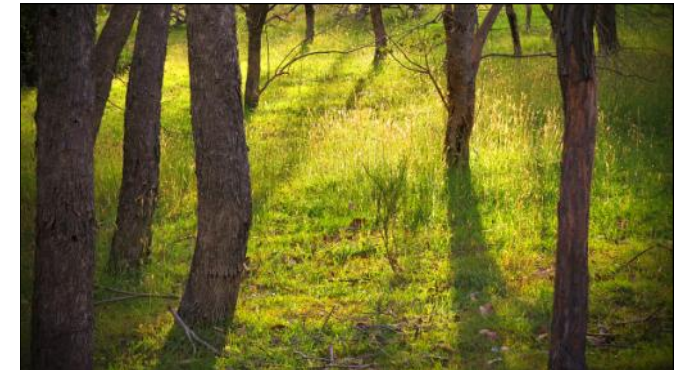


TO	DISTANCE
Alexandra	12 km
Eildon	14 km
Bonnie Doon	63 km

*In 1956, the Big Eildon Dam project, was finished, expanding the water holding capacity of the new Lake Eildon over seven times when compared to the earlier Sugarloaf Weir.*

*Fraser National Park was established at Coller Bay on the lake's western bank, 25 minutes from Alexandra and Eildon.*

*Fraser National Park affords locals and visitors easy to access camping areas, nature walks, water access and all year fishing.*



**FROM ALEXANDRA**

1. Travel east on the Goulburn Valley Highway towards Eildon, for 2 km.
2. Turn left at UT Creek Road.
3. Travel 9km to Haines Saddle.
4. Descend 3 km to the office.
5. Turn left and follow the road to where it becomes gravel.

**FROM EILDON**

1. Travel north on the Skyline Road for 10 km, until you reach Haines Saddle.
2. Descend 3 km to the office and intersection.
3. Turn left and follow the road to where it becomes gravel

*Please note that roads in the park can be narrow. Always be aware of native animals on the roads. Fire regulations apply during the summer months. Ensure you are aware of the daily restriction status, before lighting any fires.*

**WALK START**  
1.5 km along Left Road  
**GOOGLE MAPS GPS: S37.169210, E145.840451**